

Converting Colors

Hex(FFB5C6)

Have a look what the booklet for
Hex(FFB5C6) contains.

Hex(FFB5C6)	3
<i>Conversions</i>	4
<i>Details</i>	6
<i>Harmonies</i>	11
<i>Previews</i>	23
<i>Color Blindness Simulation</i>	26
<i>CSS Examples</i>	29

Color

Hex(FFB5C6)

Conversions

Conversions Part 1

Format	Color
Hex	FFB5C6
RGB	255, 181, 198
RGB Percent	100%, 71%, 78%
CMY	0.0000, 0.2902, 0.2235
CMYK	0.00, 0.29, 0.22, 0.00
HSL	346°, 100%, 85%
HSV	346°, 29%, 100%
XYZ	67.9569, 58.3850, 61.1138
YIQ	205.0640, 38.6470, 20.9750

Conversions

Conversions Part 2

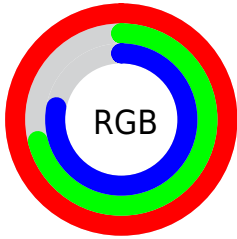
Format	Color
R _Y B	255, 181, 198
Decimal	16758214
CIE Lab	80.95, 29.20, 2.18
CIE LCh	81, 29.280, 4.274
Yxy	58.3850, 0.3625, 0.3115
Android (android.graphics.Color)	4294948294 (0xFFFFB5C6)
YUV	205.0640, -3.4826, 43.7939
Hunter-Lab	76.4101, 25.0352, 6.0661

Details

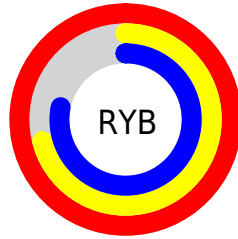
The Hex color **FFB5C6** is a light color, and the websafe version is hex **FFCCCC**. A complement of this color would be **B5FFEE**, and the grayscale version is **CDCDCD**.

A 20% lighter version of the original color is **FFEDFF**, and **C57F90** is the 20% darker color. If you saturate the color by 10%, you get **FF9CB2**, and if you desaturate by 10%, it is **FFCFDA**.

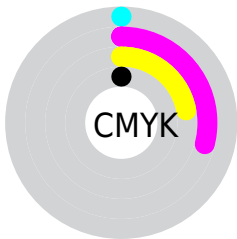
Distribution



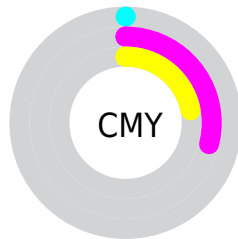
- Red (100%)
- Green (71%)
- Blue (78%)



- Red (100%)
- Yellow (71%)
- Blue (78%)



- Cyan (0%)
- Magenta (29%)
- Yellow (22%)
- Black (0%)



- Cyan (0%)
- Magenta (29%)
- Yellow (22%)

Brightness & Saturation Gradients

These gradients show how the Hex color FFB5C6 changes by changing the brightness by 10 percent. The first figure shows a shift by +10% for each color and the second figure -10%.

Similar to the brightness gradients but the following saturation gradients show a change of the Hex color FFB5C6 by changing the saturation by 10% instead.

 FFB5C6

 FFB5C6

FFFFFF

 E29AAB

 FFEDFF

 C57F90

 A96677

 8E4D5E

 733546

 591D30

 40051B

 2C0001

 000000

 #FFB5C6

 #FFB5C6

 #FF9CB2

 #FFCFDA

 #FF829F

 #FFE8ED

 #FF698B

#FFFFFF

 #FF4F77

 #FF3664

 #FF1C50

 #FF033D

 #FF003B

Harmonies

Analogous

The Analogous color harmony consists of three colors that are next to each other on the color wheel.



F0B8E1



FFB5C6



FFB8AB

Triad

The Triadic color harmony groups three colors that are evenly spaced from another and form a triangle on the color wheel.



FFB5C6



BBD19B



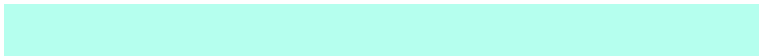
89D2FA

Complementary

The Complementary color scheme is a pair of colors which are on the opposite of each other on the color wheel.



FFB5C6



B5FFEE

Split Complementary

Split-complementary colors differ from the complementary color scheme. The scheme consists of three colors, the original color and two neighbors of the complement color.



77D7E7



FFB5C6



9CD6B0

Square

The Square scheme is like the rectangle color scheme, but the four colors are evenly spaced on the color wheel.



FFB5C6



D9C892



81D8CC



ADCAFF

Rectangle

The Rectangle color scheme consists of four colors that form a rectangle on the color wheel.



FFB5C6



F7BC9E



81D8CC



80D4F5

Sweetspot

The Sweet Spot groups the original color and five complimentary colors.



FFB5C6



FFE8ED



EEB5FF



807175



000000



808080

Same Dimension

The Same Dimension uses a secret algorithm to generate beautiful new colors.



FFB5C6



FFA6BA



FFC9B5



807376



BF002C



40000F

Inverse Universe

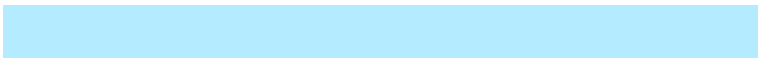
The Inverse Universe completely reimagines the original color for something new.



FFB5C6



FFA6BA



B5EBFF



807376



BF002C



40000F

Previews

White Background



This preview shows how the Hex color FFB5C6 looks on a white background.

Color Contrast Check

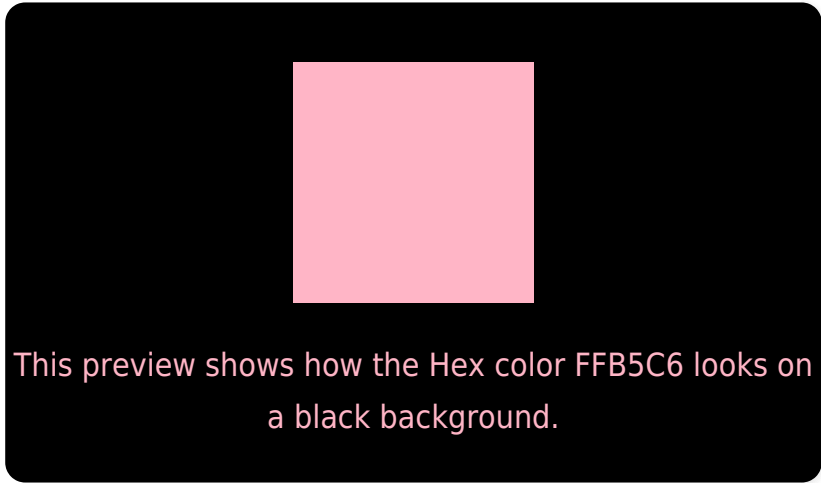
Large Text (above 18pt) WCAG AA × Fail

Any Text WCAG AA × Fail

Large Text (above 18pt) WCAG AAA × Fail

Any Text WCAG AAA × Fail

Black Background



Color Contrast Check

Large Text (above 18pt) WCAG AA ✓ Pass

Any Text WCAG AA ✓ Pass

Large Text (above 18pt) WCAG AAA ✓ Pass

Any Text WCAG AAA ✓ Pass

If you want to check with other color combinations, try the [Color Contrast Checker](#).

Hex FFB5C6 Background



This preview shows how black text looks on a background with the Hex color FFB5C6.

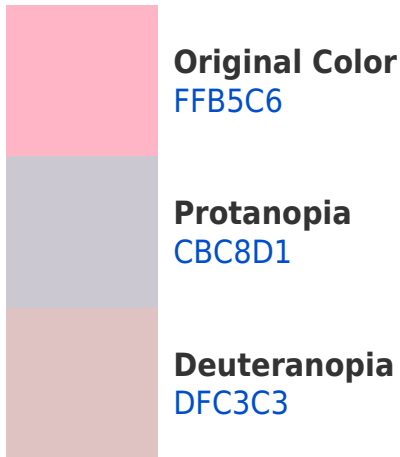


This preview shows how white text looks on a background with the Hex color FFB5C6.

Color Blindness Simulation

Color vision deficiency is a very complex topic, and I could not describe the different causes any better than Wikipedia does, so if you want to learn more, you should check out their [article about color blindness](#).

Dichromacy



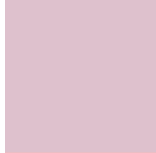


Tritanopia
FFB5C3

Trichromacy



Original Color
FFB5C6



Protanomaly
DEC1CD



Deuteranomaly
EBBEC4

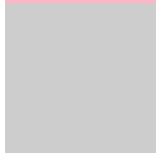


Tritanomaly
FFB5C4

Monochromacy



Original Color
FFB5C6



Achromatopsia
CDCDCD



Achromatomaly
DFC4CA

CSS Examples

Text

The CSS property to change the color of the text to Hex FFB5C6 is called "color". The color property can be set on classes, ids or directly on the HTML element.

This example shows how text in the color #FFB5C6 looks like.

```
.text, #text, p{  
    color:#FFB5C6  
}
```

If you want to add a text shadow in that color use the text-shadow property, you can generate a text shadow directly with our [CSS Text Shadow Generator](#).

Here you see how black text with a 4 pixel #FFB5C6 colored shadow looks like.

```
.shadow{ text-shadow: 4px 4px 2px #FFB5C6
}
```

Border

The CSS property to change the border of an element to Hex FFB5C6 is called "border". The border property can be set on classes, ids or directly on the HTML element.

This example shows the color as border, it can be applied via the CSS property "border" or "border-color".

```
.border, #border, table{ border:4px solid
#FFB5C6 }
```

If only the border color should be changed use the property `border-color`.

```
.border{ border-color:#FFB5C6 }
```

If you want to add a box shadow in that color use:

Here you see how a box with a 4 pixel #FFB5C6 colored shadow looks like.

```
.boxshadow{ -moz-box-shadow:4px 4px 4px  
4px #FFB5C6; -webkit-box-shadow:4px 4px  
4px 4px #FFB5C6; box-shadow:4px 4px 4px  
4px #FFB5C6 }
```

Background

The CSS property to change the background color of an element to Hex FFB5C6 is called "background". The background property can be set on classes, ids or directly on the HTML element.

```
.background, #background, body{  
background:#FFB5C6 }
```

If only the background color should be changed can be used:

```
.background{ background-color:#FFB5C6 }
```

This example shows the color as background, it is applied via the CSS property "background".

To optimize and compress your CSS code, you can use our [online CSS compressor and optimizer](#) based on csstidy. If you want to create a linear or radial gradient as background or border, check our [CSS Gradient Generator](#).

Hey! You found this booklet interesting? Support Converting Colors with the new Membership Option!

The pro membership hides all ads, plus gives you double the colors in the color bucket, and more awesome pro features!

[Learn more, Memberships starting at \\$2.50/m!](#)

**Follow me
on Twitter!**

@ConvertingColor