

Converting Colors

Hex(FFB8AB)

Have a look what the booklet for
Hex(FFB8AB) contains.

Hex(FFB8AB)	3
<i>Conversions</i>	4
<i>Details</i>	6
<i>Harmonies</i>	11
<i>Previews</i>	23
<i>Color Blindness Simulation</i>	26
<i>CSS Examples</i>	29

Color

Hex(FFB8AB)

Conversions

Conversions Part 1

Format	Color
Hex	FFB8AB
RGB	255, 184, 171
RGB Percent	100%, 72%, 67%
CMY	0.0000, 0.2784, 0.3294
CMYK	0.00, 0.28, 0.33, 0.00
HSL	9°, 100%, 84%
HSV	9°, 33%, 100%
XYZ	65.7312, 58.4813, 46.3517
YIQ	203.7470, 46.4890, 11.0090

Conversions

Conversions Part 2

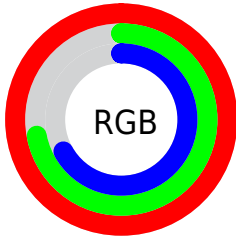
Format	Color
R _Y B	255, 186, 171
Decimal	16758955
CIE Lab	81.01, 24.03, 16.80
CIE LCh	81, 29.323, 34.952
Yxy	58.4813, 0.3854, 0.3429
Android (android.graphics.Color)	4294949035 (0xFFFFB8AB)
YUV	203.7470, -16.1443, 44.9489
Hunter-Lab	76.4730, 19.5990, 17.5944

Details

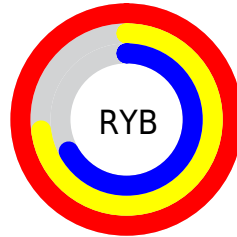
The Hex color **FFB8AB** is a light color, and the websafe version is hex **FFCCCC**. A complement of this color would be **ABF2FF**, and the grayscale version is **CCCCCC**.

A 20% lighter version of the original color is **FFF0E2**, and **C58377** is the 20% darker color. If you saturate the color by 10%, you get **FFA292**, and if you desaturate by 10%, it is **FFCEC4**.

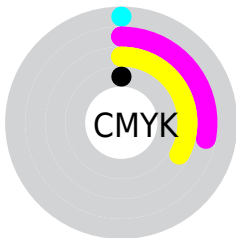
Distribution



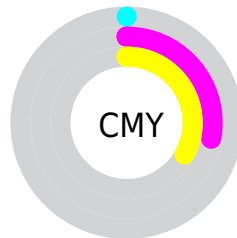
- Red (100%)
- Green (72%)
- Blue (67%)



- Red (100%)
- Yellow (73%)
- Blue (67%)



- Cyan (0%)
- Magenta (28%)
- Yellow (33%)
- Black (0%)



- Cyan (0%)
- Magenta (28%)
- Yellow (33%)

Brightness & Saturation Gradients

These gradients show how the Hex color FFB8AB changes by changing the brightness by 10 percent. The first figure shows a shift by +10% for each color and the second figure -10%.

Similar to the brightness gradients but the following saturation gradients show a change of the Hex color FFB8AB by changing the saturation by 10% instead.

 FFB8AB

 FFB8AB

FFFFFF

 E29D90

 FFF0E2

 C58377

 A8695E

 8D5046

 713930

 57221B

 3E0B01

 270001

 000000

 #FFB8AB

 #FFB8AB

 #FFA292

 #FFCEC4

 #FF8D78

 #FFE3DE

 #FF775F

 #FFF9F8

 #FF6245

#FFFFFF

 #FF4C2C

 #FF3712

 #FF2700

Harmonies

Analogous

The Analogous color harmony consists of three colors that are next to each other on the color wheel.



FFB5C6



FFB8AB



F1C098

Triad

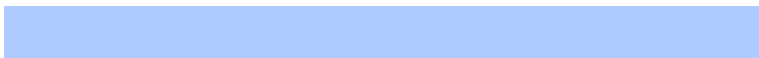
The Triadic color harmony groups three colors that are evenly spaced from another and form a triangle on the color wheel.



FFB8AB



9BD6B1



AECAFF

Complementary

The Complementary color scheme is a pair of colors which are on the opposite of each other on the color wheel.



FFB8AB



ABF2FF

Split Complementary

Split-complementary colors differ from the complementary color scheme. The scheme consists of three colors, the original color and two neighbors of the complement color.



8AD2FA



FFB8AB



81D9CD

Square

The Square scheme is like the rectangle color scheme, but the four colors are evenly spaced on the color wheel.



FFB8AB



BBD19C



77D7E8



D3C1F6

Rectangle

The Rectangle color scheme consists of four colors that form a rectangle on the color wheel.



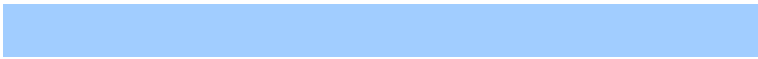
FFB8AB



E2C693



77D7E8



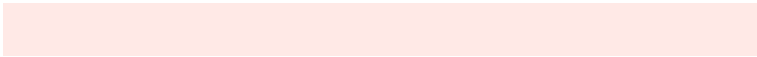
A1CDFF

Sweetspot

The Sweet Spot groups the original color and five complimentary colors.



FFB8AB



FFE9E6



FFABF2



807370



000000



808080

Same Dimension

The Same Dimension uses a secret algorithm to generate beautiful new colors.



FFB8AB



FFA999



FFE2AB



807573



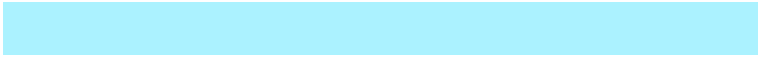
BF1E00



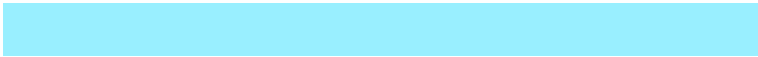
400A00

Inverse Universe

The Inverse Universe completely reimagines the original color for something new.



ABF2FF



99EFFF



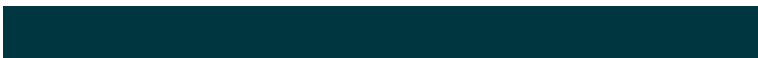
ABC8FF



737E80



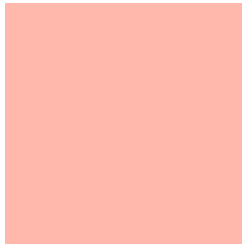
00A2BF



003640

Previews

White Background



This preview shows how the Hex color FFB8AB looks on a white background.

Color Contrast Check

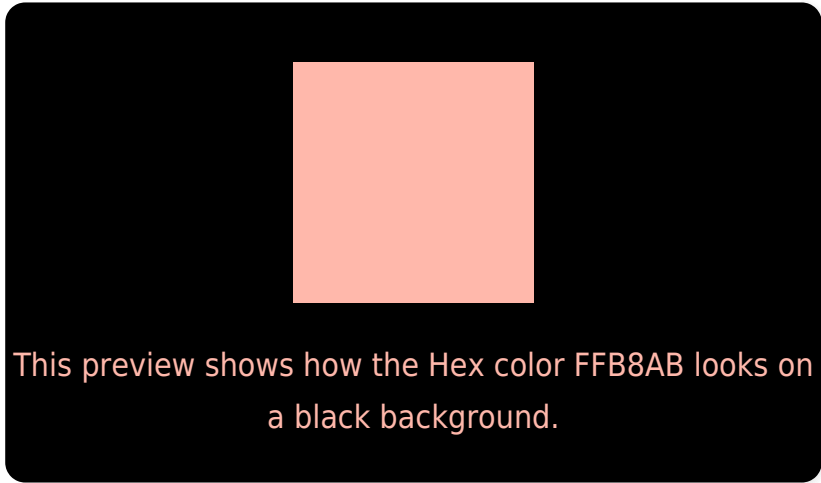
Large Text (above 18pt) WCAG AA × Fail

Any Text WCAG AA × Fail

Large Text (above 18pt) WCAG AAA × Fail

Any Text WCAG AAA × Fail

Black Background



Color Contrast Check

Large Text (above 18pt) WCAG AA ✓ Pass

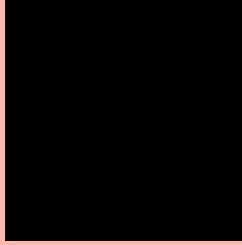
Any Text WCAG AA ✓ Pass

Large Text (above 18pt) WCAG AAA ✓ Pass

Any Text WCAG AAA ✓ Pass

If you want to check with other color combinations, try the [Color Contrast Checker](#).

Hex FFB8AB Background



This preview shows how black text looks on a background with the Hex color FFB8AB.

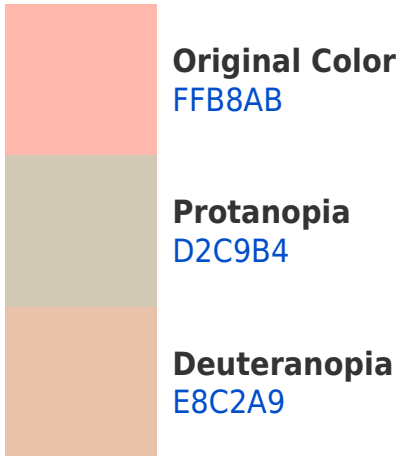


This preview shows how white text looks on a background with the Hex color FFB8AB.

Color Blindness Simulation

Color vision deficiency is a very complex topic, and I could not describe the different causes any better than Wikipedia does, so if you want to learn more, you should check out their [article about color blindness](#).

Dichromacy



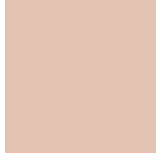


Tritanopia
FFB6C3

Trichromacy



Original Color
FFB8AB



Protanomaly
E2C3B1



Deuteranomaly
F0BEAA

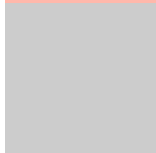


Tritanomaly
FFB7BA

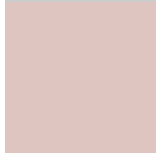
Monochromacy



Original Color
FFB8AB



Achromatopsia
CCCCCC



Achromatomaly
DFC5C0

CSS Examples

Text

The CSS property to change the color of the text to Hex FFB8AB is called "color". The color property can be set on classes, ids or directly on the HTML element.

This example shows how text in the color #FFB8AB looks like.

```
.text, #text, p{  
    color:#FFB8AB  
}
```

If you want to add a text shadow in that color use the text-shadow property, you can generate a text shadow directly with our [CSS Text Shadow Generator](#).

Here you see how black text with a 4 pixel #FFB8AB colored shadow looks like.

```
.shadow{ text-shadow: 4px 4px 2px #FFB8AB
}
```

Border

The CSS property to change the border of an element to Hex FFB8AB is called "border". The border property can be set on classes, ids or directly on the HTML element.

This example shows the color as border, it can be applied via the CSS property "border" or "border-color".

```
.border, #border, table{ border:4px solid
#FFB8AB }
```

If only the border color should be changed use the property `border-color`.

```
.border{ border-color:#FFB8AB }
```

If you want to add a box shadow in that color use:

Here you see how a box with a 4 pixel #FFB8AB colored shadow looks like.

```
.boxshadow{ -moz-box-shadow:4px 4px 4px  
4px #FFB8AB; -webkit-box-shadow:4px 4px  
4px 4px #FFB8AB; box-shadow:4px 4px 4px  
4px #FFB8AB }
```

Background

The CSS property to change the background color of an element to Hex FFB8AB is called "background". The background property can be set on classes, ids or directly on the HTML element.

```
.background, #background, body{  
background:#FFB8AB }
```

If only the background color should be changed can be used:

```
.background{ background-color:#FFB8AB }
```

This example shows the color as background, it is applied via the CSS property "background".

To optimize and compress your CSS code, you can use our [online CSS compressor and optimizer](#) based on csstidy. If you want to create a linear or radial gradient as background or border, check our [CSS Gradient Generator](#).

Hey! You found this booklet interesting? Support Converting Colors with the new Membership Option!

The pro membership hides all ads, plus gives you double the colors in the color bucket, and more awesome pro features!

[Learn more, Memberships starting at \\$2.50/m!](#)

**Follow me
on Twitter!**

@ConvertingColor