

Converting Colors

Hex(FFB8B7)

Have a look what the booklet for
Hex(FFB8B7) contains.

Hex(FFB8B7)	3
<i>Conversions</i>	4
<i>Details</i>	6
<i>Harmonies</i>	11
<i>Previews</i>	23
<i>Color Blindness Simulation</i>	26
<i>CSS Examples</i>	29

Color

Hex(FFB8B7)

Conversions

Conversions Part 1

Format	Color
Hex	FFB8B7
RGB	255, 184, 183
RGB Percent	100%, 72%, 72%
CMY	0.0000, 0.2784, 0.2824
CMYK	0.00, 0.28, 0.28, 0.00
HSL	1°, 100%, 86%
HSV	1°, 28%, 100%
XYZ	66.9277, 58.9599, 52.6527
YIQ	205.1150, 42.6370, 14.7410

Conversions

Conversions Part 2

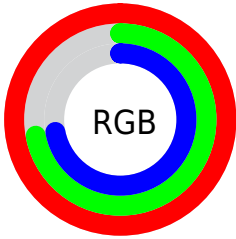
Format	Color
R _Y B	255, 184, 183
Decimal	16758967
CIE Lab	81.27, 25.56, 10.72
CIE LCh	81, 27.722, 22.759
Yxy	58.9599, 0.3749, 0.3302
Android (android.graphics.Color)	4294949047 (0xFFFFB8B7)
YUV	205.1150, -10.9027, 43.7491
Hunter-Lab	76.7853, 21.2101, 13.0938

Details

The Hex color **FFB8B7** is a light color, and the websafe version is hex **FFCCCC**. A complement of this color would be **B7FEFF**, and the grayscale version is **CDCDCD**.

A 20% lighter version of the original color is **FFF0EF**, and **C58282** is the 20% darker color. If you saturate the color by 10%, you get **FF9F9E**, and if you desaturate by 10%, it is **FFD1D1**.

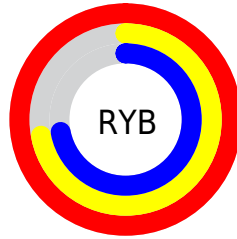
Distribution



Red (100%)

Green (72%)

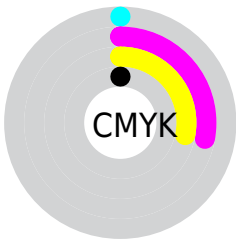
Blue (72%)



Red (100%)

Yellow (72%)

Blue (72%)

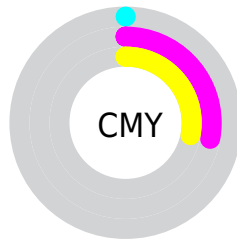


Cyan (0%)

Magenta (28%)

Yellow (28%)

Black (0%)



Cyan (0%)

Magenta (28%)

Yellow (28%)

Brightness & Saturation Gradients

These gradients show how the Hex color FFB8B7 changes by changing the brightness by 10 percent. The first figure shows a shift by +10% for each color and the second figure -10%.

Similar to the brightness gradients but the following saturation gradients show a change of the Hex color FFB8B7 by changing the saturation by 10% instead.

 FFB8B7

 FFB8B7

FFFFFF

 E29D9C

 FFF0EF

 C58282

 A96969

 8D5051

 72383A

 582124

 3F0A10

 290000

 000000

 #FFB8B7

 #FFB8B7

 #FF9F9E

 #FFD1D1

 #FF8684

 #FFEAEA

 #FF6D6A

#FFFFFF

 #FF5351

 #FF3A38

 #FF211E

 #FF0805

 #FF0400

Harmonies

Analogous

The Analogous color harmony consists of three colors that are next to each other on the color wheel.



F9B8D1



FFB8B7



F7BEA2

Triad

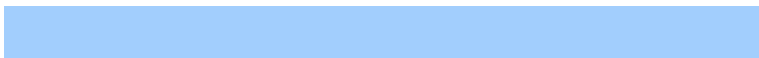
The Triadic color harmony groups three colors that are evenly spaced from another and form a triangle on the color wheel.



FFB8B7



AAD5AA



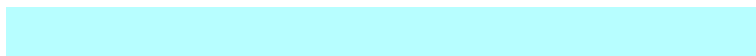
A2CEFD

Complementary

The Complementary color scheme is a pair of colors which are on the opposite of each other on the color wheel.



FFB8B7



B7FEFF

Split Complementary

Split-complementary colors differ from the complementary color scheme. The scheme consists of three colors, the original color and two neighbors of the complement color.



86D5F2



FFB8B7



8FD8C2

Square

The Square scheme is like the rectangle color scheme, but the four colors are evenly spaced on the color wheel.



FFB8B7



C8CE9A



7FD8DD



C6C5FA

Rectangle

The Rectangle color scheme consists of four colors that form a rectangle on the color wheel.



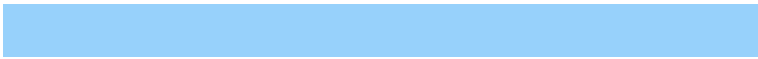
FFB8B7



EBC399



7FD8DD



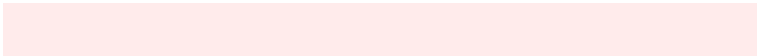
97D1FB

Sweetspot

The Sweet Spot groups the original color and five complimentary colors.



FFB8B7



FFE8E8



FF69B4



808080



000000



808080

Same Dimension

The Same Dimension uses a secret algorithm to generate beautiful new colors.



FFB8B7



FFAAA8



FFDDB7



807373



BF0300



400100

Inverse Universe

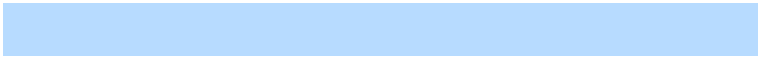
The Inverse Universe completely reimagines the original color for something new.



B7FEFF



A8FEFF



B7DBFF



737F80



00BDBF



003F40

Previews

White Background



This preview shows how the Hex color FFB8B7 looks on a white background.

Color Contrast Check

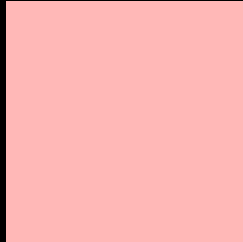
Large Text (above 18pt) WCAG AA × Fail

Any Text WCAG AA × Fail

Large Text (above 18pt) WCAG AAA × Fail

Any Text WCAG AAA × Fail

Black Background



This preview shows how the Hex color FFB8B7 looks on a black background.

Color Contrast Check

Large Text (above 18pt) WCAG AA ✓ Pass

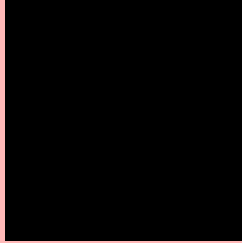
Any Text WCAG AA ✓ Pass

Large Text (above 18pt) WCAG AAA ✓ Pass

Any Text WCAG AAA ✓ Pass

If you want to check with other color combinations, try the [Color Contrast Checker](#).

Hex FFB8B7 Background



This preview shows how black text looks on a background with the Hex color FFB8B7.

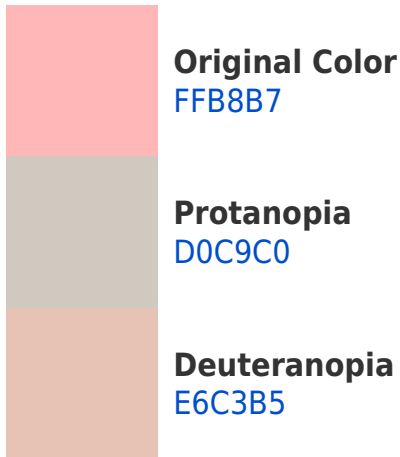


This preview shows how white text looks on a background with the Hex color FFB8B7.

Color Blindness Simulation

Color vision deficiency is a very complex topic, and I could not describe the different causes any better than Wikipedia does, so if you want to learn more, you should check out their [article about color blindness](#).

Dichromacy



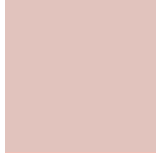


Tritanopia
FFB7C4

Trichromacy



Original Color
FFB8B7



Protanomaly
E1C3BD



Deuteranomaly
EFBFB6

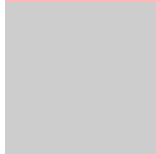


Tritanomaly
FFB7BF

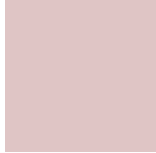
Monochromacy



Original Color
FFB8B7



Achromatopsia
CDCDCD



Achromatomaly
DFC5C5

CSS Examples

Text

The CSS property to change the color of the text to Hex FFB8B7 is called "color". The color property can be set on classes, ids or directly on the HTML element.

This example shows how text in the color #FFB8B7 looks like.

```
.text, #text, p{  
    color:#FFB8B7  
}
```

If you want to add a text shadow in that color use the text-shadow property, you can generate a text shadow directly with our [CSS Text Shadow Generator](#).

Here you see how black text with a 4 pixel #FFB8B7 colored shadow looks like.

```
.shadow{ text-shadow: 4px 4px 2px #FFB8B7  
}
```

Border

The CSS property to change the border of an element to Hex FFB8B7 is called "border". The border property can be set on classes, ids or directly on the HTML element.

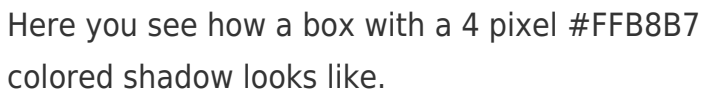
This example shows the color as border, it can be applied via the CSS property "border" or "border-color".

```
.border, #border, table{ border:4px solid  
#FFB8B7 }
```

If only the border color should be changed use the property `border-color`.

```
.border{ border-color:#FFB8B7 }
```

If you want to add a box shadow in that color use:



Here you see how a box with a 4 pixel #FFB8B7 colored shadow looks like.

```
.boxshadow{ -moz-box-shadow:4px 4px 4px  
4px #FFB8B7; -webkit-box-shadow:4px 4px  
4px 4px #FFB8B7; box-shadow:4px 4px 4px  
4px #FFB8B7 }
```

Background

The CSS property to change the background color of an element to Hex FFB8B7 is called "background". The background property can be set on classes, ids or directly on the HTML element.

```
.background, #background, body{  
background:#FFB8B7 }
```

If only the background color should be changed can be used:

```
.background{ background-color:#FFB8B7 }
```

This example shows the color as background, it is applied via the CSS property "background".

To optimize and compress your CSS code, you can use our [online CSS compressor and optimizer](#) based on csstidy. If you want to create a linear or radial gradient as background or border, check our [CSS Gradient Generator](#).

Hey! You found this booklet interesting? Support Converting Colors with the new Membership Option!

The pro membership hides all ads, plus gives you double the colors in the color bucket, and more awesome pro features!

[Learn more, Memberships starting at \\$2.50/m!](#)

**Follow me
on Twitter!**

@ConvertingColor