

# Converting Colors

Hex(FFBA9C)

Have a look what the booklet for  
Hex(FFBA9C) contains.

<b>Hex(FFBA9C)</b> .....	3
<b><i>Conversions</i></b> .....	4
<b><i>Details</i></b> .....	6
<b><i>Harmonies</i></b> .....	11
<b><i>Previews</i></b> .....	23
<b><i>Color Blindness Simulation</i></b> .....	26
<b><i>CSS Examples</i></b> .....	29

# **Color**

**Hex(FFBA9C)**

# Conversions

## Conversions Part 1

Format	Color
Hex	FFBA9C
RGB	255, 186, 156
RGB Percent	100%, 73%, 61%
CMY	0.0000, 0.2706, 0.3882
CMYK	0.00, 0.27, 0.39, 0.00
HSL	18°, 100%, 81%
HSV	18°, 39%, 100%
XYZ	64.7997, 58.7781, 39.3825
YIQ	203.2110, 50.7540, 5.2980

# Conversions

## Conversions Part 2

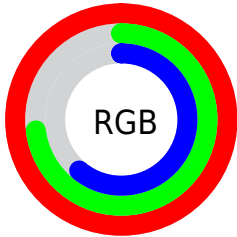
Format	Color
R <sub>Y</sub> B	255, 199, 156
Decimal	16759452
CIE Lab	81.17, 21.23, 25.03
CIE LCh	81, 32.824, 49.703
Yxy	58.7781, 0.3976, 0.3607
Android (android.graphics.Color)	4294949532 (0xFFFFBA9C)
YUV	203.2110, -23.2750, 45.4190
Hunter-Lab	76.6669, 16.7030, 23.2105

# Details

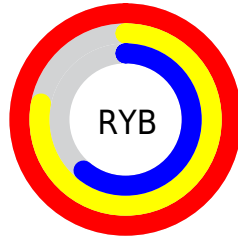
The Hex color **FFBA9C** is a light color, and the websafe version is hex **FFCC99**. A complement of this color would be **9CE1FF**, and the grayscale version is **CBCBCB**.

A 20% lighter version of the original color is **FFF2D3**, and **C48569** is the 20% darker color. If you saturate the color by 10%, you get **FFA883**, and if you desaturate by 10%, it is **FFCCB6**.

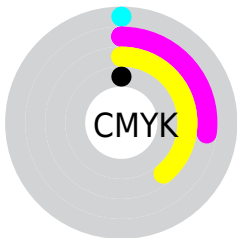
# Distribution



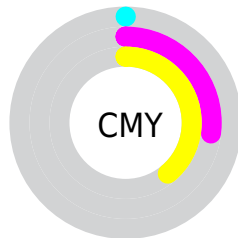
- Red (100%)
- Green (73%)
- Blue (61%)



- Red (100%)
- Yellow (78%)
- Blue (61%)



- Cyan (0%)
- Magenta (27%)
- Yellow (39%)
- Black (0%)



- Cyan (0%)
- Magenta (27%)
- Yellow (39%)

# Brightness & Saturation Gradients

These gradients show how the Hex color FFBA9C changes by changing the brightness by 10 percent. The first figure shows a shift by +10% for each color and the second figure -10%.

Similar to the brightness gradients but the following saturation gradients show a change of the Hex color FFBA9C by changing the saturation by 10% instead.



 FFBA9C

 FFBA9C

FFFFFF

 E19F82

 FFF2D3

 C48569

 FFFFEF

 A86B50

 8C5339

 703B23

 56240E

 3C0F00

 250000

 000000

 FFBA9C

 FFBA9C

 FFA883

 FFCCB6

 FF9669

 FFDECF

 FF8550

 FFEFE9

 FF7336

FFFFFF

 FF611D

 FF4F03

 FF4D00

# Harmonies

## Analogous

The Analogous color harmony consists of three colors that are next to each other on the color wheel.



FFB4B6



FFBA9C



E9C48D

# Triad

The Triadic color harmony groups three colors that are evenly spaced from another and form a triangle on the color wheel.



FFBA9C



85DABE



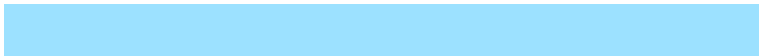
BFC5FF

# Complementary

The Complementary color scheme is a pair of colors which are on the opposite of each other on the color wheel.



FFBA9C



9CE1FF

# Split Complementary

Split-complementary colors differ from the complementary color scheme. The scheme consists of three colors, the original color and two neighbors of the complement color.



93D0FF



FFBA9C



6BDADD

# Square

The Square scheme is like the rectangle color scheme, but the four colors are evenly spaced on the color wheel.



FFBA9C



A7D6A1



70D7F7



E6BBF2

# Rectangle

The Rectangle color scheme consists of four colors that form a rectangle on the color wheel.



FFBA9C



D5CB8D



70D7F7



B1C9FF

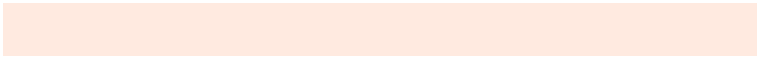


# Sweetspot

The Sweet Spot groups the original color and five complimentary colors.



FFBA9C



FFEAE0



FF9CE1



80736E



000000



808080



# Same Dimension

The Same Dimension uses a secret algorithm to generate beautiful new colors.



FFBA9C



FFAB87



FFEB9C



807773



BF3A00

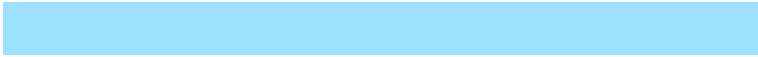


401300

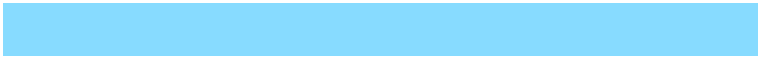


# Inverse Universe

The Inverse Universe completely reimagines the original color for something new.



9CE1FF



87DBFF



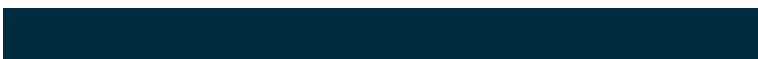
9CB0FF



737C80



0085BF



002C40



# Previews

## White Background



This preview shows how the Hex color FFBA9C looks on a white background.

## Color Contrast Check

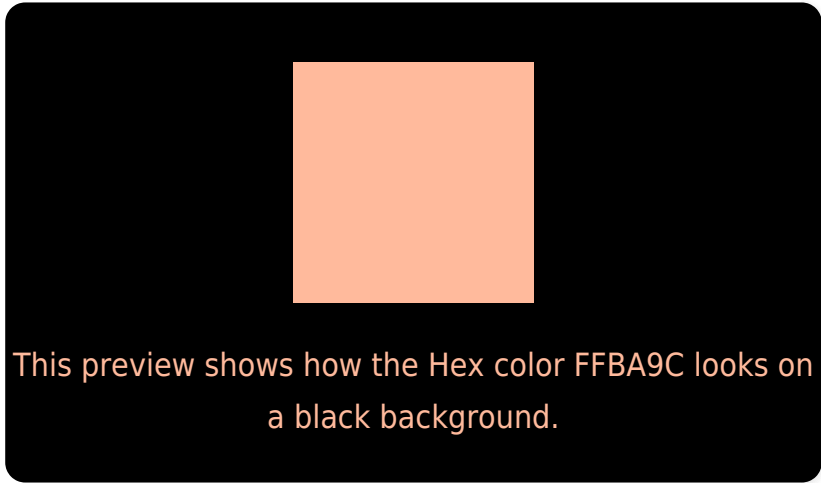
Large Text (above 18pt) WCAG AA × Fail

Any Text WCAG AA × Fail

Large Text (above 18pt) WCAG AAA × Fail

Any Text WCAG AAA × Fail

# Black Background



## Color Contrast Check

Large Text (above 18pt) WCAG AA ✓ Pass

Any Text WCAG AA ✓ Pass

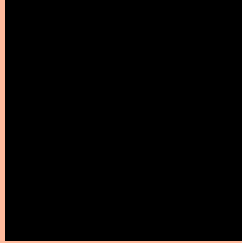
Large Text (above 18pt) WCAG AAA ✓ Pass

Any Text WCAG AAA ✓ Pass

If you want to check with other color combinations, try the [Color Contrast Checker](#).



## Hex FFBA9C Background



This preview shows how black text looks on a background with the Hex color FFBA9C.

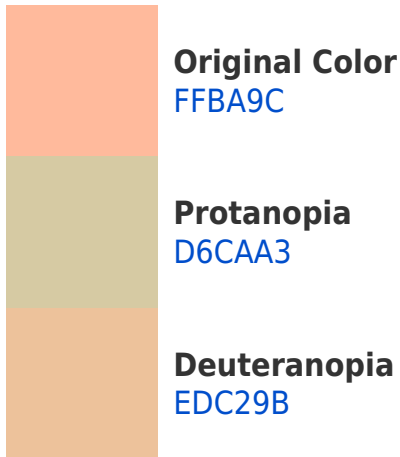


This preview shows how white text looks on a background with the Hex color FFBA9C.

# Color Blindness Simulation

Color vision deficiency is a very complex topic, and I could not describe the different causes any better than Wikipedia does, so if you want to learn more, you should check out their [article about color blindness](#).

## Dichromacy



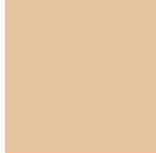


**Tritanopia**  
FFB6C3

# Trichromacy



**Original Color**  
FFBA9C



**Protanomaly**  
E5C4A0



**Deuteranomaly**  
F4BF9B

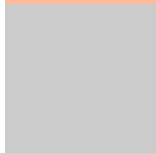


**Tritanomaly**  
FFB7B5

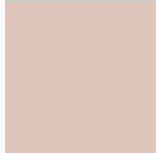
# Monochromacy



**Original Color**  
FFBA9C



**Achromatopsia**  
CBCBCB



**Achromatomaly**  
DEC5BA

# CSS Examples

## Text

The CSS property to change the color of the text to Hex FFBA9C is called "color". The color property can be set on classes, ids or directly on the HTML element.

This example shows how text in the color #FFBA9C looks like.

```
.text, #text, p{  
    color:#FFBA9C  
}
```

If you want to add a text shadow in that color use the text-shadow property, you can generate a text shadow directly with our [CSS Text Shadow Generator](#).

Here you see how black text with a 4 pixel #FFBA9C colored shadow looks like.

```
.shadow{ text-shadow: 4px 4px 2px #FFBA9C
}
```

## Border

The CSS property to change the border of an element to Hex FFBA9C is called "border". The border property can be set on classes, ids or directly on the HTML element.

This example shows the color as border, it can be applied via the CSS property "border" or "border-color".

```
.border, #border, table{ border:4px solid
#FFBA9C }
```

If only the border color should be changed use the property `border-color`.

```
.border{ border-color:#FFBA9C }
```

If you want to add a box shadow in that color use:

Here you see how a box with a 4 pixel #FFBA9C colored shadow looks like.

```
.boxshadow{ -moz-box-shadow:4px 4px 4px  
4px #FFBA9C; -webkit-box-shadow:4px 4px  
4px 4px #FFBA9C; box-shadow:4px 4px 4px  
4px #FFBA9C }
```

# Background

The CSS property to change the background color of an element to Hex FFBA9C is called "background". The background property can be set on classes, ids or directly on the HTML element.

```
.background, #background, body{  
background:#FFBA9C }
```

If only the background color should be changed can be used:

```
.background{ background-color:#FFBA9C }
```

This example shows the color as background, it is applied via the CSS property "background".

To optimize and compress your CSS code, you can use our [online CSS compressor and optimizer](#) based on csstidy. If you want to create a linear or radial gradient as background or border, check our [CSS Gradient Generator](#).



Hey! You found this booklet interesting? Support Converting Colors with the new Membership Option!

The pro membership hides all ads, plus gives you double the colors in the color bucket, and more awesome pro features!

**[Learn more, Memberships starting at \\$2.50/m!](#)**

**Follow me  
on Twitter!**

@ConvertingColor