

Converting Colors

Hex(FFBABA)

Have a look what the booklet for
Hex(FFBABA) contains.

Hex(FFBABA)	3
<i>Conversions</i>	4
<i>Details</i>	6
<i>Harmonies</i>	11
<i>Previews</i>	23
<i>Color Blindness Simulation</i>	26
<i>CSS Examples</i>	29

Color

Hex(FFBABA)

Conversions

Conversions Part 1

Format	Color
Hex	FFBABA
RGB	255, 186, 186
RGB Percent	100%, 73%, 73%
CMY	0.0000, 0.2706, 0.2706
CMYK	0.00, 0.27, 0.27, 0.00
HSL	0°, 100%, 86%
HSV	0°, 27%, 100%
XYZ	67.6618, 59.9230, 54.4545
YIQ	206.6310, 41.1240, 14.6280

Conversions

Conversions Part 2

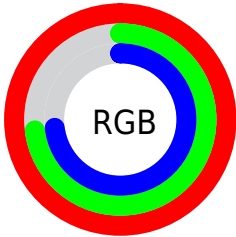
Format	Color
R _Y B	255, 186, 186
Decimal	16759482
CIE Lab	81.80, 24.91, 9.86
CIE LCh	82, 26.794, 21.596
Yxy	59.9230, 0.3717, 0.3292
Android (android.graphics.Color)	4294949562 (0xFFFFBABA)
YUV	206.6310, -10.1711, 42.4196
Hunter-Lab	77.4099, 20.5544, 12.4790

Details

The Hex color **FFBABA** is a light color, and the websafe version is hex **FFCCCC**. A complement of this color would be **BAFFFF**, and the grayscale version is **CFCFCF**.

A 20% lighter version of the original color is **FFF2F2**, and **C58485** is the 20% darker color. If you saturate the color by 10%, you get **FFA1A1**, and if you desaturate by 10%, it is **FFD3D3**.

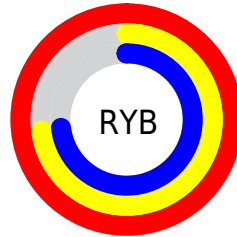
Distribution



Red (100%)

Green (73%)

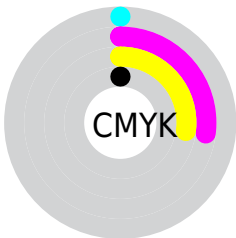
Blue (73%)



Red (100%)

Yellow (73%)

Blue (73%)

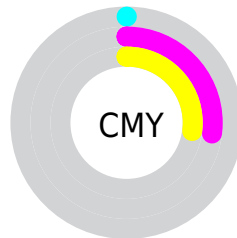


Cyan (0%)

Magenta (27%)

Yellow (27%)

Black (0%)



Cyan (0%)

Magenta (27%)

Yellow (27%)

Brightness & Saturation Gradients

These gradients show how the Hex color FFBABA changes by changing the brightness by 10 percent. The first figure shows a shift by +10% for each color and the second figure -10%.

Similar to the brightness gradients but the following saturation gradients show a change of the Hex color FFBABA by changing the saturation by 10% instead.

 FFBABA

 FFBABA

FFFFFF

 E29F9F

 FFF2F2

 C58485

 A96B6C

 8D5254

 733A3C

 582327

 3F0C12

 2A0000

 000000

 #FFBABA

 #FFBABA

 #FFA1A1

 #FFD3D3

 #FF8787

 #FFEDED

 #FF6D6D

#FFFFFF

 #FF5454

 #FF3A3A

 #FF2121

 #FF0808

 #FF0000

Harmonies

Analogous

The Analogous color harmony consists of three colors that are next to each other on the color wheel.



F9BAD3



FFBABA



F7BFA5

Triad

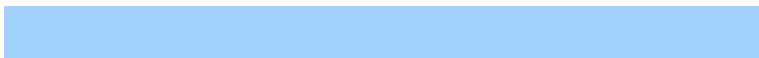
The Triadic color harmony groups three colors that are evenly spaced from another and form a triangle on the color wheel.



FFBABA



AED6AB



A4D0FC

Complementary

The Complementary color scheme is a pair of colors which are on the opposite of each other on the color wheel.



FFBABA



BAFFFF

Split Complementary

Split-complementary colors differ from the complementary color scheme. The scheme consists of three colors, the original color and two neighbors of the complement color.



89D6F2



FFBABA



94D9C3

Square

The Square scheme is like the rectangle color scheme, but the four colors are evenly spaced on the color wheel.



FFBABA



CBCF9C



84D9DD



C6C7FA

Rectangle

The Rectangle color scheme consists of four colors that form a rectangle on the color wheel.



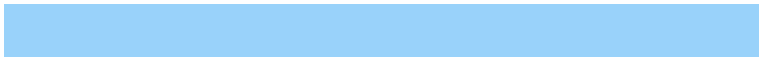
FFBABA



ECC49C



84D9DD



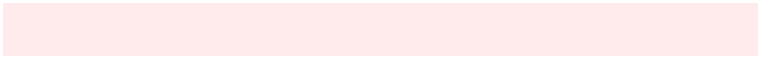
99D2FA

Sweetspot

The Sweet Spot groups the original color and five complimentary colors.



FFBABA



FFE8E8



FFBAFF



807373



000000



808080

Same Dimension

The Same Dimension uses a secret algorithm to generate beautiful new colors.



FFBABA



FFADAD



FFDDBA



807373



BF0000



400000

Inverse Universe

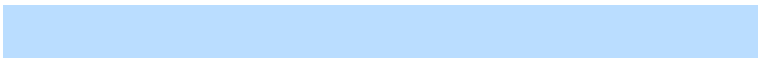
The Inverse Universe completely reimagines the original color for something new.



BAFFFF



ADFFFF



BADDF



738080



00BFBF



004040

Previews

White Background



This preview shows how the Hex color FFBABA looks on a white background.

Color Contrast Check

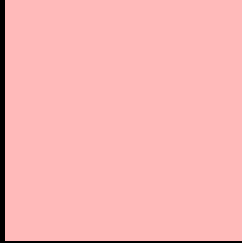
Large Text (above 18pt) WCAG AA × Fail

Any Text WCAG AA × Fail

Large Text (above 18pt) WCAG AAA × Fail

Any Text WCAG AAA × Fail

Black Background



This preview shows how the Hex color FFBABA looks on a black background.

Color Contrast Check

Large Text (above 18pt) WCAG AA ✓ Pass

Any Text WCAG AA ✓ Pass

Large Text (above 18pt) WCAG AAA ✓ Pass

Any Text WCAG AAA ✓ Pass

If you want to check with other color combinations, try the [Color Contrast Checker](#).

Hex FFBABA Background



This preview shows how black text looks on a background with the Hex color FFBABA.

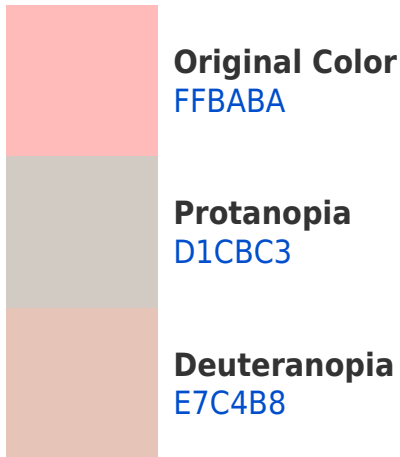


This preview shows how white text looks on a background with the Hex color FFBABA.

Color Blindness Simulation

Color vision deficiency is a very complex topic, and I could not describe the different causes any better than Wikipedia does, so if you want to learn more, you should check out their [article about color blindness](#).

Dichromacy



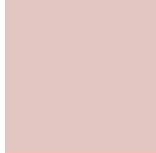


Tritanopia
FFB9C6

Trichromacy



Original Color
FFBABA



Protanomaly
E2C5C0



Deuteranomaly
F0C0B9

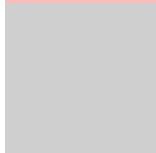


Tritanomaly
FFB9C2

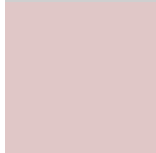
Monochromacy



Original Color
FFBABA



Achromatopsia
CFCFCF



Achromatomaly
E0C7C7

CSS Examples

Text

The CSS property to change the color of the text to Hex FFBABA is called "color". The color property can be set on classes, ids or directly on the HTML element.

This example shows how text in the color #FFBABA looks like.

```
.text, #text, p{  
    color:#FFBABA  
}
```

If you want to add a text shadow in that color use the text-shadow property, you can generate a text shadow directly with our [CSS Text Shadow Generator](#).

Here you see how black text with a 4 pixel #FFBABA colored shadow looks like.

```
.shadow{ text-shadow: 4px 4px 2px #FFBABA
}
```

Border

The CSS property to change the border of an element to Hex FFBABA is called "border". The border property can be set on classes, ids or directly on the HTML element.

This example shows the color as border, it can be applied via the CSS property "border" or "border-color".

```
.border, #border, table{ border:4px solid
#FFBABA }
```

If only the border color should be changed use the property `border-color`.

```
.border{ border-color:#FFBABA }
```

If you want to add a box shadow in that color use:

Here you see how a box with a 4 pixel #FFBABA colored shadow looks like.

```
.boxshadow{ -moz-box-shadow:4px 4px 4px  
4px #FFBABA; -webkit-box-shadow:4px 4px  
4px 4px #FFBABA; box-shadow:4px 4px 4px  
4px #FFBABA }
```

Background

The CSS property to change the background color of an element to Hex FFBABA is called "background". The background property can be set on classes, ids or directly on the HTML element.

```
.background, #background, body{  
background:#FFBABA }
```

If only the background color should be changed can be used:

```
.background{ background-color:#FFBABA }
```

This example shows the color as background, it is applied via the CSS property "background".

To optimize and compress your CSS code, you can use our [online CSS compressor and optimizer](#) based on csstidy. If you want to create a linear or radial gradient as background or border, check our [CSS Gradient Generator](#).

Hey! You found this booklet interesting? Support Converting Colors with the new Membership Option!

The pro membership hides all ads, plus gives you double the colors in the color bucket, and more awesome pro features!

[Learn more, Memberships starting at \\$2.50/m!](#)

**Follow me
on Twitter!**

@ConvertingColor