

Converting Colors

Hex(FFBBCC)

Have a look what the booklet for
Hex(FFBBCC) contains.

Hex(FFBBCC)	3
<i>Conversions</i>	4
<i>Details</i>	6
<i>Harmonies</i>	11
<i>Previews</i>	23
<i>Color Blindness Simulation</i>	26
<i>CSS Examples</i>	29

Color

Hex(FFBBCC)

Conversions

Conversions Part 1

Format	Color
Hex	FFBBCC
RGB	255, 187, 204
RGB Percent	100%, 73%, 80%
CMY	0.0000, 0.2667, 0.2000
CMYK	0.00, 0.27, 0.20, 0.00
HSL	345°, 100%, 87%
HSV	345°, 27%, 100%
XYZ	69.9094, 61.1603, 65.2472
YIQ	209.2700, 35.0710, 19.7030

Conversions

Conversions Part 2

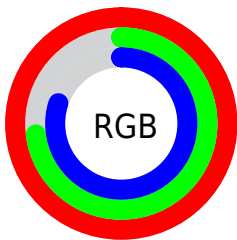
Format	Color
R _Y B	255, 187, 204
Decimal	16759756
CIE Lab	82.46, 26.92, 1.15
CIE LCh	82, 26.946, 2.449
Yxy	61.1603, 0.3561, 0.3115
Android (android.graphics.Color)	4294949836 (0xFFFFBBCC)
YUV	209.2700, -2.5981, 40.1052
Hunter-Lab	78.2050, 22.7067, 5.2773

Details

The Hex color **FFBBCC** is a light color, and the websafe version is hex **FFCCCC**. A complement of this color would be **BBFFEE**, and the grayscale version is **D1D1D1**.

A 20% lighter version of the original color is **FFF4FF**, and **C58596** is the 20% darker color. If you saturate the color by 10%, you get **FFA2B9**, and if you desaturate by 10%, it is **FFD4DF**.

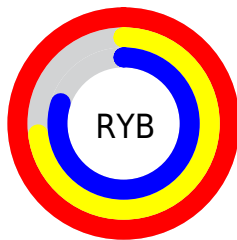
Distribution



Red (100%)

Green (73%)

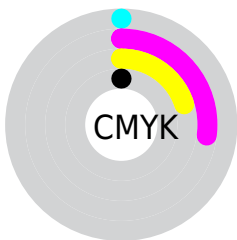
Blue (80%)



Red (100%)

Yellow (73%)

Blue (80%)

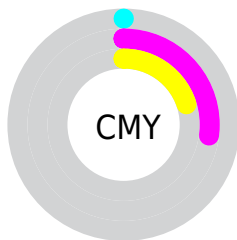


Cyan (0%)

Magenta (27%)

Yellow (20%)

Black (0%)



Cyan (0%)

Magenta (27%)

Yellow (20%)

Brightness & Saturation Gradients

These gradients show how the Hex color FFBBCC changes by changing the brightness by 10 percent. The first figure shows a shift by +10% for each color and the second figure -10%.

Similar to the brightness gradients but the following saturation gradients show a change of the Hex color FFBBCC by changing the saturation by 10% instead.

 FFBBCC

 FFBBCC

FFFFFF

 E2A0B1

 FFF4FF

 C58596

 A96C7C

 8E5363

 743B4B

 5A2435

 410C20

 2B0007

 000000

 FFBBCC

 FFBBCC

 FFA2B9

 FFD4DF

 FF88A6

 FFEEF2

 FF6E93

FFFFFF

 FF5580

 FF3B6C

 FF2259

 FF0846

 FF0040

Harmonies

Analogous

The Analogous color harmony consists of three colors that are next to each other on the color wheel.



FOBEE5



FFBBCC



FFBDB3

Triad

The Triadic color harmony groups three colors that are evenly spaced from another and form a triangle on the color wheel.



FFBBCC



C2D4A2



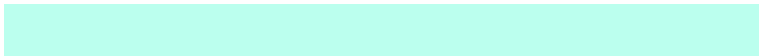
93D6F9

Complementary

The Complementary color scheme is a pair of colors which are on the opposite of each other on the color wheel.



FFBBCC



BBFFEE

Split Complementary

Split-complementary colors differ from the complementary color scheme. The scheme consists of three colors, the original color and two neighbors of the complement color.



84DBE7



FFBBCC



A6D9B5

Square

The Square scheme is like the rectangle color scheme, but the four colors are evenly spaced on the color wheel.



FFBBCC



DECC9B



8EDCCE



B2CFFF

Rectangle

The Rectangle color scheme consists of four colors that form a rectangle on the color wheel.



FFBBCC



F9C1A6



8EDCCE



8BD8F4

Sweetspot

The Sweet Spot groups the original color and five complimentary colors.



FFBBCC



FFEBF0



EEBBFF



807376



000000



808080

Same Dimension

The Same Dimension uses a secret algorithm to generate beautiful new colors.



FFBBCC



FFADC2



FFCCBB



807376



BF0030



400010

Inverse Universe

The Inverse Universe completely reimagines the original color for something new.



FFBBCC



FFADC2



BBEEFF



807376



BF0030



400010

Previews

White Background



This preview shows how the Hex color FFBBCC looks on a white background.

Color Contrast Check

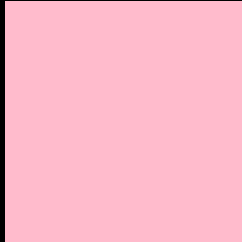
Large Text (above 18pt) WCAG AA × Fail

Any Text WCAG AA × Fail

Large Text (above 18pt) WCAG AAA × Fail

Any Text WCAG AAA × Fail

Black Background



This preview shows how the Hex color FFBBCC looks on a black background.

Color Contrast Check

Large Text (above 18pt) WCAG AA ✓ Pass

Any Text WCAG AA ✓ Pass

Large Text (above 18pt) WCAG AAA ✓ Pass

Any Text WCAG AAA ✓ Pass

If you want to check with other color combinations, try the [Color Contrast Checker](#).

Hex FFBCC Background



This preview shows how black text looks on a background with the Hex color FFBCC.

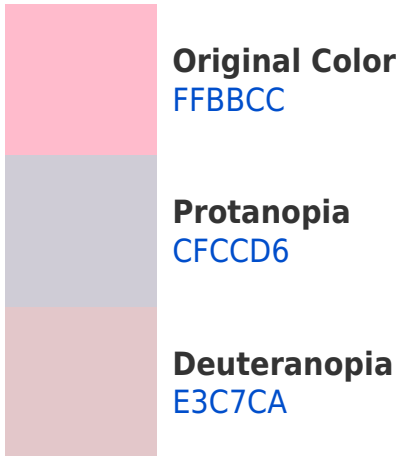


This preview shows how white text looks on a background with the Hex color FFBCC.

Color Blindness Simulation

Color vision deficiency is a very complex topic, and I could not describe the different causes any better than Wikipedia does, so if you want to learn more, you should check out their [article about color blindness](#).

Dichromacy

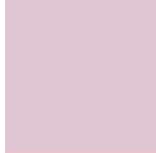




Trichromacy



Original Color
FFBCC



Protanomaly
E0C6D2



Deuteranomaly
EDC3CB

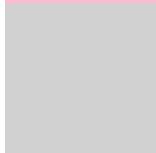


Tritanomaly
FFBCB

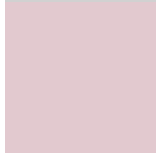
Monochromacy



Original Color
FFBCC



Achromatopsia
D1D1D1



Achromatomaly
E2C9CF

CSS Examples

Text

The CSS property to change the color of the text to Hex FFBBCC is called "color". The color property can be set on classes, ids or directly on the HTML element.

This example shows how text in the color #FFBBCC looks like.

```
.text, #text, p{  
    color:#FFBBCC  
}
```

If you want to add a text shadow in that color use the text-shadow property, you can generate a text shadow directly with our [CSS Text Shadow Generator](#).

Here you see how black text with a 4 pixel #FFBBCC colored shadow looks like.

```
.shadow{ text-shadow: 4px 4px 2px #FFBBCC
}
```

Border

The CSS property to change the border of an element to Hex FFBBCC is called "border". The border property can be set on classes, ids or directly on the HTML element.

This example shows the color as border, it can be applied via the CSS property "border" or "border-color".

```
.border, #border, table{ border:4px solid
#FFBBCC }
```

If only the border color should be changed use the property `border-color`.

```
.border{ border-color:#FFBBCC }
```

If you want to add a box shadow in that color use:

Here you see how a box with a 4 pixel #FFBBCC colored shadow looks like.

```
.boxshadow{ -moz-box-shadow:4px 4px 4px  
4px #FFBBCC; -webkit-box-shadow:4px 4px  
4px 4px #FFBBCC; box-shadow:4px 4px 4px  
4px #FFBBCC }
```

Background

The CSS property to change the background color of an element to Hex FFBBCC is called "background". The background property can be set on classes, ids or directly on the HTML element.

```
.background, #background, body{  
background:#FFBBCC }
```

If only the background color should be changed can be used:

```
.background{ background-color:#FFBBCC }
```

This example shows the color as background, it is applied via the CSS property "background".

To optimize and compress your CSS code, you can use our [online CSS compressor and optimizer](#) based on csstidy. If you want to create a linear or radial gradient as background or border, check our [CSS Gradient Generator](#).

Hey! You found this booklet interesting? Support Converting Colors with the new Membership Option!

The pro membership hides all ads, plus gives you double the colors in the color bucket, and more awesome pro features!

[Learn more, Memberships starting at \\$2.50/m!](#)

**Follow me
on Twitter!**

@ConvertingColor