

# Converting Colors

Hex(FFBCB9)

Have a look what the booklet for  
Hex(FFBCB9) contains.

<b>Hex(FFBCB9)</b> .....	3
<i><b>Conversions</b></i> .....	4
<i><b>Details</b></i> .....	6
<i><b>Harmonies</b></i> .....	11
<i><b>Previews</b></i> .....	23
<i><b>Color Blindness Simulation</b></i> .....	26
<i><b>CSS Examples</b></i> .....	29

# **Color**

**Hex(FFBCB9)**

# Conversions

## Conversions Part 1

Format	Color
Hex	FFBCB9
RGB	255, 188, 185
RGB Percent	100%, 74%, 73%
CMY	0.0000, 0.2627, 0.2745
CMYK	0.00, 0.26, 0.27, 0.00
HSL	3°, 100%, 86%
HSV	3°, 27%, 100%
XYZ	67.9802, 60.7292, 54.0379
YIQ	207.6910, 40.8950, 13.2710

# Conversions

## Conversions Part 2

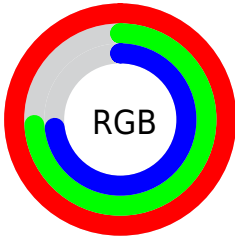
Format	Color
R <sub>Y</sub> B	255, 188, 185
Decimal	16759993
CIE Lab	82.23, 23.73, 11.02
CIE LCh	82, 26.164, 24.910
Yxy	60.7292, 0.3720, 0.3323
Android (android.graphics.Color)	4294950073 (0xFFFFBCB9)
YUV	207.6910, -11.1867, 41.4900
Hunter-Lab	77.9290, 19.3362, 13.4371

# Details

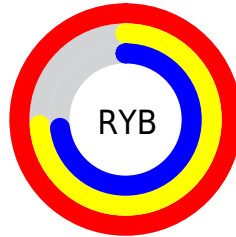
The Hex color **FFBCB9** is a light color, and the websafe version is hex **FFCCCC**. A complement of this color would be **B9FCFF**, and the grayscale version is **D0D0D0**.

A 20% lighter version of the original color is **FFF5F1**, and **C58684** is the 20% darker color. If you saturate the color by 10%, you get **FFA4A0**, and if you desaturate by 10%, it is **FFD4D3**.

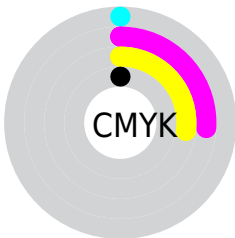
# Distribution



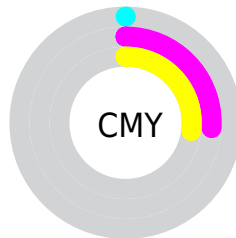
- Red (100%)
- Green (74%)
- Blue (73%)



- Red (100%)
- Yellow (74%)
- Blue (73%)



- Cyan (0%)
- Magenta (26%)
- Yellow (27%)
- Black (0%)



- Cyan (0%)
- Magenta (26%)
- Yellow (27%)

# Brightness & Saturation Gradients

These gradients show how the Hex color FFBCB9 changes by changing the brightness by 10 percent. The first figure shows a shift by +10% for each color and the second figure -10%.

Similar to the brightness gradients but the following saturation gradients show a change of the Hex color FFBCB9 by changing the saturation by 10% instead.



 FFBCB9

FFFFFF

 FFF5F1

 FFBCB9

 E2A19E

 C58684

 A96D6B

 8D5453

 733C3C

 592526

 3F0F11

 290000

 000000

 FFBCB9

 FFBCB9

 FFA4A0

 FFD4D3

 FF8B86

 FFEDEC

 FF736C

FFFFFF

 FF5A53

 FF4239

 FF2A20

 FF1107

 FF0B00

# Harmonies

## Analogous

The Analogous color harmony consists of three colors that are next to each other on the color wheel.



FBBBD2



FFBCB9



F6C2A5

# Triad

The Triadic color harmony groups three colors that are evenly spaced from another and form a triangle on the color wheel.



FFBCB9



ADD7B0



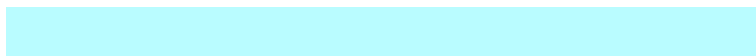
AAD0FD

# Complementary

The Complementary color scheme is a pair of colors which are on the opposite of each other on the color wheel.



FFBCB9



B9FCFF

# Split Complementary

Split-complementary colors differ from the complementary color scheme. The scheme consists of three colors, the original color and two neighbors of the complement color.



8FD7F4



FFBCB9



94DAC7

# Square

The Square scheme is like the rectangle color scheme, but the four colors are evenly spaced on the color wheel.



FFBCB9



C9D1A0



87DAE0



CBC8F9

# Rectangle

The Rectangle color scheme consists of four colors that form a rectangle on the color wheel.



FFBCB9



EAC79E



87DAE0



9FD3FB

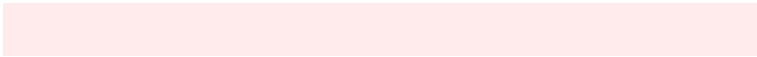


# Sweetspot

The Sweet Spot groups the original color and five complimentary colors.



FFBCB9



FFEBE8



FFB9FD



807373



000000



808080



# Same Dimension

The Same Dimension uses a secret algorithm to generate beautiful new colors.



FFBCB9



FFAEAB



FFDEB9



807373



BF0800



400300



# Inverse Universe

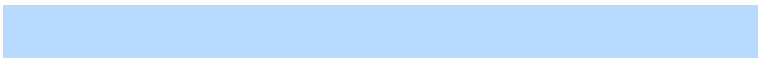
The Inverse Universe completely reimagines the original color for something new.



B9FCFF



ABFBFF



B9DAFF



737F80



00B7BF



003D40



# Previews

## White Background



This preview shows how the Hex color FFBCB9 looks on a white background.

## Color Contrast Check

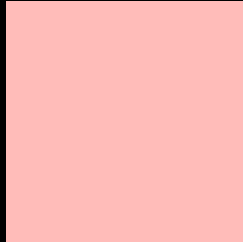
Large Text (above 18pt) WCAG AA × Fail

Any Text WCAG AA × Fail

Large Text (above 18pt) WCAG AAA × Fail

Any Text WCAG AAA × Fail

# Black Background



This preview shows how the Hex color FFBCB9 looks on a black background.

## Color Contrast Check

Large Text (above 18pt) WCAG AA ✓ Pass

Any Text WCAG AA ✓ Pass

Large Text (above 18pt) WCAG AAA ✓ Pass

Any Text WCAG AAA ✓ Pass

If you want to check with other color combinations, try the [Color Contrast Checker](#).



## Hex FFBCB9 Background



This preview shows how black text looks on a background with the Hex color FFBCB9.

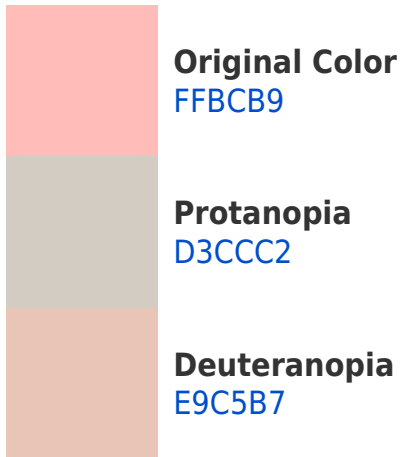


This preview shows how white text looks on a background with the Hex color FFBCB9.

# Color Blindness Simulation

Color vision deficiency is a very complex topic, and I could not describe the different causes any better than Wikipedia does, so if you want to learn more, you should check out their [article about color blindness](#).

## Dichromacy

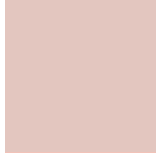




# Trichromacy



**Original Color**  
FFBCB9



**Protanomaly**  
E3C6BF



**Deuteranomaly**  
F1C2B8

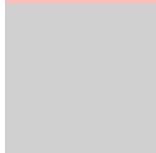


**Tritanomaly**  
FFBCC3

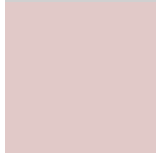
# Monochromacy



**Original Color**  
FFBCB9



**Achromatopsia**  
D0D0D0



**Achromatomaly**  
E1C9C8

# CSS Examples

## Text

The CSS property to change the color of the text to Hex FFBCB9 is called "color". The color property can be set on classes, ids or directly on the HTML element.

This example shows how text in the color #FFBCB9 looks like.

```
.text, #text, p{  
    color:#FFBCB9  
}
```

If you want to add a text shadow in that color use the text-shadow property, you can generate a text shadow directly with our [CSS Text Shadow Generator](#).

Here you see how black text with a 4 pixel #FFBCB9 colored shadow looks like.

```
.shadow{ text-shadow: 4px 4px 2px #FFBCB9
}
```

## Border

The CSS property to change the border of an element to Hex FFBCB9 is called "border". The border property can be set on classes, ids or directly on the HTML element.

This example shows the color as border, it can be applied via the CSS property "border" or "border-color".

```
.border, #border, table{ border:4px solid
#FFBCB9 }
```

If only the border color should be changed use the property `border-color`.

```
.border{ border-color:#FFBCB9 }
```

If you want to add a box shadow in that color use:

Here you see how a box with a 4 pixel #FFBCB9 colored shadow looks like.

```
.boxshadow{ -moz-box-shadow:4px 4px 4px  
4px #FFBCB9; -webkit-box-shadow:4px 4px  
4px 4px #FFBCB9; box-shadow:4px 4px 4px  
4px #FFBCB9 }
```

# Background

The CSS property to change the background color of an element to Hex FFBCB9 is called "background". The background property can be set on classes, ids or directly on the HTML element.

```
.background, #background, body{  
background:#FFBCB9 }
```

If only the background color should be changed can be used:

```
.background{ background-color:#FFBCB9 }
```

This example shows the color as background, it is applied via the CSS property "background".

To optimize and compress your CSS code, you can use our [online CSS compressor and optimizer](#) based on csstidy. If you want to create a linear or radial gradient as background or border, check our [CSS Gradient Generator](#).



Hey! You found this booklet interesting? Support Converting Colors with the new Membership Option!

The pro membership hides all ads, plus gives you double the colors in the color bucket, and more awesome pro features!

**[Learn more, Memberships starting at \\$2.50/m!](#)**

**Follow me  
on Twitter!**

@ConvertingColor