

Converting Colors

Hex(FFBCBF)

Have a look what the booklet for
Hex(FFBCBF) contains.

Hex(FFBCBF)	3
<i>Conversions</i>	4
<i>Details</i>	6
<i>Harmonies</i>	11
<i>Previews</i>	23
<i>Color Blindness Simulation</i>	26
<i>CSS Examples</i>	29

Color

Hex(FFBCBF)

Conversions

Conversions Part 1

Format	Color
Hex	FFBCBF
RGB	255, 188, 191
RGB Percent	100%, 74%, 75%
CMY	0.0000, 0.2627, 0.2510
CMYK	0.00, 0.26, 0.25, 0.00
HSL	357°, 100%, 87%
HSV	357°, 26%, 100%
XYZ	68.6272, 60.9880, 57.4450
YIQ	208.3750, 38.9690, 15.1370

Conversions

Conversions Part 2

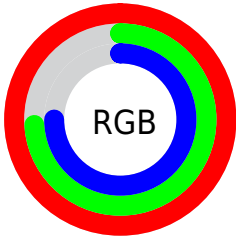
Format	Color
R_{YB}	255, 188, 191
Decimal	16759999
CIE _{Lab}	82.37, 24.54, 8.00
CIE _{LCh}	82, 25.815, 18.054
Yxy	60.9880, 0.3669, 0.3260
Android (android.graphics.Color)	4294950079 (0xFFFFBCBF)
YUV	208.3750, -8.5659, 40.8901
Hunter-Lab	78.0948, 20.1940, 11.0538

Details

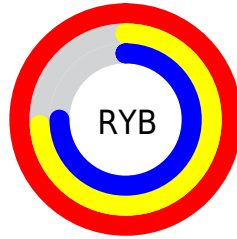
The Hex color **FFBCBF** is a light color, and the websafe version is hex **FFCCCC**. A complement of this color would be **BCFFFC**, and the grayscale version is **D0D0D0**.

A 20% lighter version of the original color is **FFF5F7**, and **C5868A** is the 20% darker color. If you saturate the color by 10%, you get **FFA3A7**, and if you desaturate by 10%, it is **FFD6D7**.

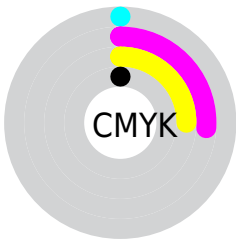
Distribution



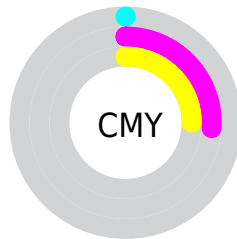
- Red (100%)
- Green (74%)
- Blue (75%)



- Red (100%)
- Yellow (74%)
- Blue (75%)



- Cyan (0%)
- Magenta (26%)
- Yellow (25%)
- Black (0%)



- Cyan (0%)
- Magenta (26%)
- Yellow (25%)

Brightness & Saturation Gradients

These gradients show how the Hex color FFBCBF changes by changing the brightness by 10 percent. The first figure shows a shift by +10% for each color and the second figure -10%.

Similar to the brightness gradients but the following saturation gradients show a change of the Hex color FFBCBF by changing the saturation by 10% instead.

 FFBCBF

FFFFFF

 FFF5F7

 FFBCBF

 E2A1A4

 C5868A

 A96D70

 8E5458

 733C41

 59252B

 400E16

 2A0000

 000000

 FFBCBF

 FFBCBF

 FFA3A7

 FFD6D7

 FF898E

 FFEFF0

 FF7076

FFFFFF

 FF565E

 FF3D45

 FF232D

 FF0A14

 FF000B

Harmonies

Analogous

The Analogous color harmony consists of three colors that are next to each other on the color wheel.



F7BDD8



FFBCBF



F9C1AA

Triad

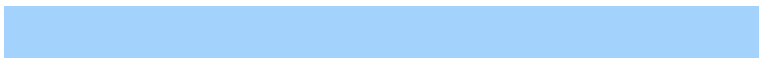
The Triadic color harmony groups three colors that are evenly spaced from another and form a triangle on the color wheel.



FFBCBF



B4D6AC



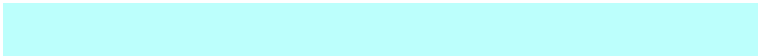
A3D2FC

Complementary

The Complementary color scheme is a pair of colors which are on the opposite of each other on the color wheel.



FFBCBF



BCFFFC

Split Complementary

Split-complementary colors differ from the complementary color scheme. The scheme consists of three colors, the original color and two neighbors of the complement color.



8CD8F0



FFBCBF



9ADAC2

Square

The Square scheme is like the rectangle color scheme, but the four colors are evenly spaced on the color wheel.



FFBCBF



D0D09F



8ADBDB



C4CAFB

Rectangle

The Rectangle color scheme consists of four colors that form a rectangle on the color wheel.



FFBCBF



EFC5A1



8ADBDB



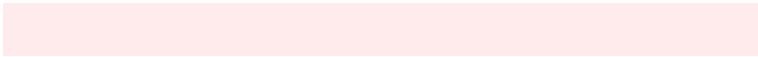
9AD4F9

Sweetspot

The Sweet Spot groups the original color and five complimentary colors.



FFBCBF



FFEDEC



FCBCFF



807373



000000



808080

Same Dimension

The Same Dimension uses a secret algorithm to generate beautiful new colors.



FFBCBF



FFADB1



FFDABC



807373



BF0009



400003

Inverse Universe

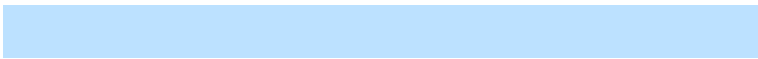
The Inverse Universe completely reimagines the original color for something new.



FFBCBF



FFADB1



BCE1FF



807373



BF0009



400003

Previews

White Background



This preview shows how the Hex color FFBCBF looks on a white background.

Color Contrast Check

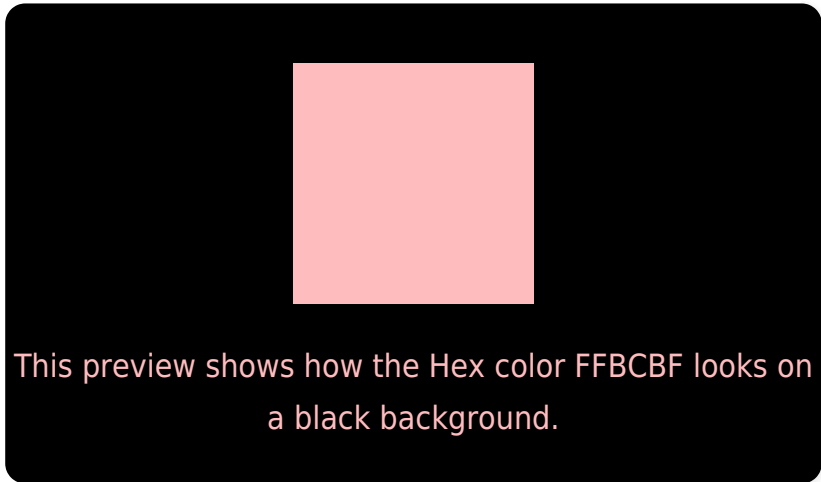
Large Text (above 18pt) WCAG AA × Fail

Any Text WCAG AA × Fail

Large Text (above 18pt) WCAG AAA × Fail

Any Text WCAG AAA × Fail

Black Background



Color Contrast Check

Large Text (above 18pt) WCAG AA ✓ Pass

Any Text WCAG AA ✓ Pass

Large Text (above 18pt) WCAG AAA ✓ Pass

Any Text WCAG AAA ✓ Pass

If you want to check with other color combinations, try the [Color Contrast Checker](#).

Hex FFBCBF Background



This preview shows how black text looks on a background with the Hex color FFBCBF.

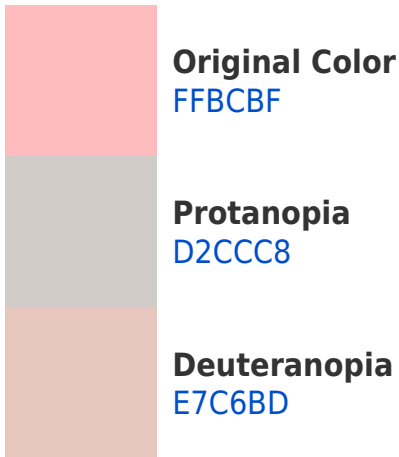


This preview shows how white text looks on a background with the Hex color FFBCBF.

Color Blindness Simulation

Color vision deficiency is a very complex topic, and I could not describe the different causes any better than Wikipedia does, so if you want to learn more, you should check out their [article about color blindness](#).

Dichromacy



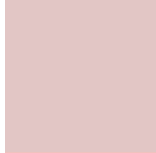


Tritanopia
FFBBC9

Trichromacy



Original Color
FFBCBF



Protanomaly
E2C6C5



Deuteranomaly
F0C2BE

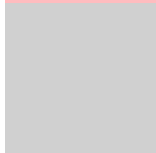


Tritanomaly
FFBCC5

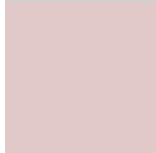
Monochromacy



Original Color
FFBCBF



Achromatopsia
D0D0D0



Achromatomaly
E1C9CA

CSS Examples

Text

The CSS property to change the color of the text to Hex FFBCBF is called "color". The color property can be set on classes, ids or directly on the HTML element.

This example shows how text in the color #FFBCBF looks like.

```
.text, #text, p{  
  color:#FFBCBF  
}
```

If you want to add a text shadow in that color use the text-shadow property, you can generate a text shadow directly with our [CSS Text Shadow Generator](#).

Here you see how black text with a 4 pixel #FFBCBF colored shadow looks like.

```
.shadow{ text-shadow: 4px 4px 2px #FFBCBF
}
```

Border

The CSS property to change the border of an element to Hex FFBCBF is called "border". The border property can be set on classes, ids or directly on the HTML element.

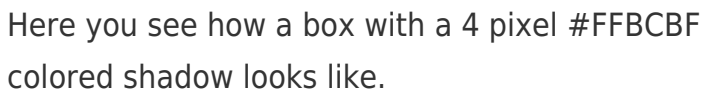
This example shows the color as border, it can be applied via the CSS property "border" or "border-color".

```
.border, #border, table{ border:4px solid
#FFBCBF }
```

If only the border color should be changed use the property `border-color`.

```
.border{ border-color:#FFBCBF }
```

If you want to add a box shadow in that color use:



Here you see how a box with a 4 pixel #FFBCBF colored shadow looks like.

```
.boxshadow{ -moz-box-shadow:4px 4px 4px  
4px #FFBCBF; -webkit-box-shadow:4px 4px  
4px 4px #FFBCBF; box-shadow:4px 4px 4px  
4px #FFBCBF }
```

Background

The CSS property to change the background color of an element to Hex FFBCBF is called "background". The background property can be set on classes, ids or directly on the HTML element.

```
.background, #background, body{  
background:#FFBCBF }
```

If only the background color should be changed can be used:

```
.background{ background-color:#FFBCBF }
```

This example shows the color as background, it is applied via the CSS property "background".

To optimize and compress your CSS code, you can use our [online CSS compressor and optimizer](#) based on csstidy. If you want to create a linear or radial gradient as background or border, check our [CSS Gradient Generator](#).

Hey! You found this booklet interesting? Support Converting Colors with the new Membership Option!

The pro membership hides all ads, plus gives you double the colors in the color bucket, and more awesome pro features!

[Learn more, Memberships starting at \\$2.50/m!](#)

**Follow me
on Twitter!**

@ConvertingColor