

Converting Colors

Hex(FFBCC6)

Have a look what the booklet for
Hex(FFBCC6) contains.

Hex(FFBCC6)	3
<i>Conversions</i>	4
<i>Details</i>	6
<i>Harmonies</i>	11
<i>Previews</i>	23
<i>Color Blindness Simulation</i>	26
<i>CSS Examples</i>	29

Color

Hex(FFBCC6)

Conversions

Conversions Part 1

Format	Color
Hex	FFBCC6
RGB	255, 188, 198
RGB Percent	100%, 74%, 78%
CMY	0.0000, 0.2627, 0.2235
CMYK	0.00, 0.26, 0.22, 0.00
HSL	351°, 100%, 87%
HSV	351°, 26%, 100%
XYZ	69.4163, 61.3037, 61.6002
YIQ	209.1730, 36.7220, 17.3140

Conversions

Conversions Part 2

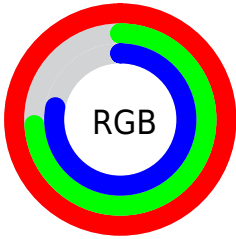
Format	Color
R _Y B	255, 188, 198
Decimal	16760006
CIE Lab	82.54, 25.53, 4.49
CIE LCh	83, 25.917, 9.968
Yxy	61.3037, 0.3609, 0.3188
Android (android.graphics.Color)	4294950086 (0xFFFFBCC6)
YUV	209.1730, -5.5083, 40.1903
Hunter-Lab	78.2967, 21.2354, 8.1610

Details

The Hex color **FFBCC6** is a light color, and the websafe version is hex **FFCCCC**. A complement of this color would be **BCFFF5**, and the grayscale version is **D1D1D1**.

A 20% lighter version of the original color is **FFF5FF**, and **C58690** is the 20% darker color. If you saturate the color by 10%, you get **FFA3B0**, and if you desaturate by 10%, it is **FFD6DC**.

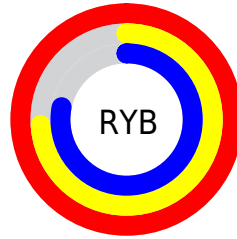
Distribution



Red (100%)

Green (74%)

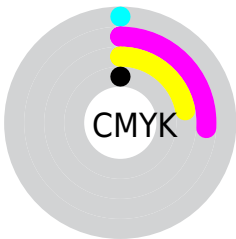
Blue (78%)



Red (100%)

Yellow (74%)

Blue (78%)

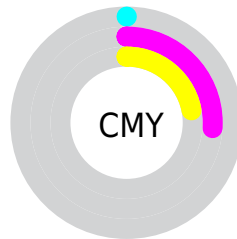


Cyan (0%)

Magenta (26%)

Yellow (22%)

Black (0%)



Cyan (0%)

Magenta (26%)

Yellow (22%)

Brightness & Saturation Gradients

These gradients show how the Hex color FFBC66 changes by changing the brightness by 10 percent. The first figure shows a shift by +10% for each color and the second figure -10%.

Similar to the brightness gradients but the following saturation gradients show a change of the Hex color FFBC66 by changing the saturation by 10% instead.

 FFBC6

 FFBC6

FFFFFF

 E2A1AB

 FFF5FF

 C58690

 A96D77

 8E545E

 733C46

 592530

 400E1B

 2B0000

 000000

 FFBC6

 FFBC6

 FFA3B0

 FFD6DC

 FF899B

 FFEFF1

 FF7085

FFFFFF

 FF566F

 FF3D5A

 FF2344

 FF0A2E

 FF0026

Harmonies

Analogous

The Analogous color harmony consists of three colors that are next to each other on the color wheel.



F4BEDF



FFBCC6



FDBFAF

Triad

The Triadic color harmony groups three colors that are evenly spaced from another and form a triangle on the color wheel.



FFBCC6



BCD5A8



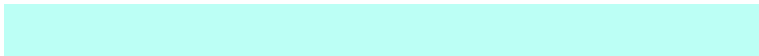
9CD4FA

Complementary

The Complementary color scheme is a pair of colors which are on the opposite of each other on the color wheel.



FFBCC6



BCFFF5

Split Complementary

Split-complementary colors differ from the complementary color scheme. The scheme consists of three colors, the original color and two neighbors of the complement color.



8ADAEC



FFBCC6



A1DABC

Square

The Square scheme is like the rectangle color scheme, but the four colors are evenly spaced on the color wheel.



FFBCC6



D7CE9D



8DDBD5



BBCDFD

Rectangle

The Rectangle color scheme consists of four colors that form a rectangle on the color wheel.



FFBCC6



F4C4A4



8DDBD5



94D6F7

Sweetspot

The Sweet Spot groups the original color and five complimentary colors.



FFBCC6



FFECEE



F5BCFF



807375



000000



808080

Same Dimension

The Same Dimension uses a secret algorithm to generate beautiful new colors.



FFBCC6



FFADBA



FFD3BC



807375



BF001D



40000A

Inverse Universe

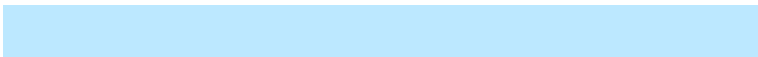
The Inverse Universe completely reimagines the original color for something new.



FFBCC6



FFADBA



BCE8FF



807375



BF001D



40000A

Previews

White Background



This preview shows how the Hex color `FFBCC6` looks on a white background.

Color Contrast Check

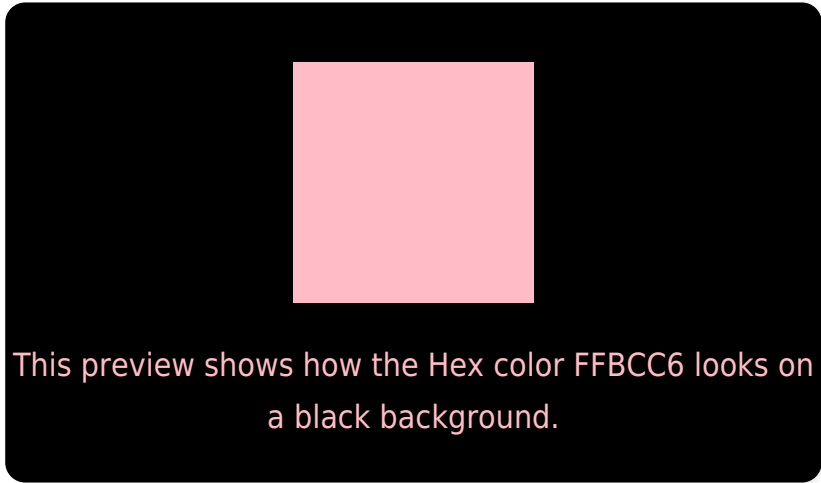
Large Text (above 18pt) WCAG AA × Fail

Any Text WCAG AA × Fail

Large Text (above 18pt) WCAG AAA × Fail

Any Text WCAG AAA × Fail

Black Background



Color Contrast Check

Large Text (above 18pt) WCAG AA ✓ Pass

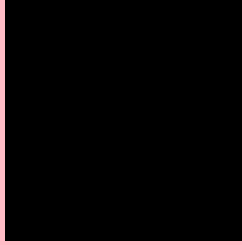
Any Text WCAG AA ✓ Pass

Large Text (above 18pt) WCAG AAA ✓ Pass

Any Text WCAG AAA ✓ Pass

If you want to check with other color combinations, try the [Color Contrast Checker](#).

Hex FFBC6 Background



This preview shows how black text looks on a background with the Hex color FFBC6.

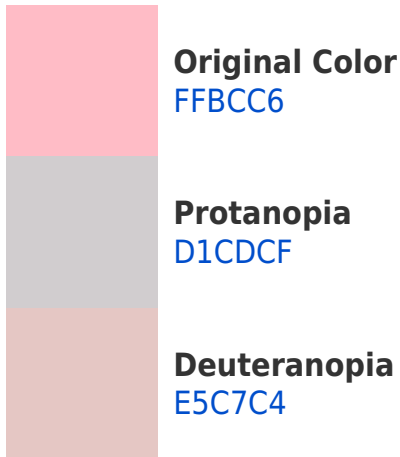


This preview shows how white text looks on a background with the Hex color FFBC6.

Color Blindness Simulation

Color vision deficiency is a very complex topic, and I could not describe the different causes any better than Wikipedia does, so if you want to learn more, you should check out their [article about color blindness](#).

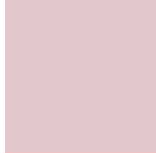
Dichromacy



Trichromacy



Original Color
FBCC6



Protanomaly
E2C7CC



Deuteranomaly
EEC3C5

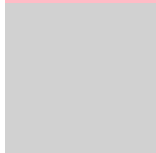


Tritanomaly
FBCC9

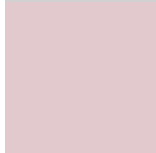
Monochromacy



Original Color
FBCC6



Achromatopsia
D1D1D1



Achromatomaly
E2C9CD

CSS Examples

Text

The CSS property to change the color of the text to Hex FFBC66 is called "color". The color property can be set on classes, ids or directly on the HTML element.

This example shows how text in the color #FFBC66 looks like.

```
.text, #text, p{  
    color:#FFBC66  
}
```

If you want to add a text shadow in that color use the text-shadow property, you can generate a text shadow directly with our [CSS Text Shadow Generator](#).

Here you see how black text with a 4 pixel #FFBCC6 colored shadow looks like.

```
.shadow{ text-shadow: 4px 4px 2px #FFBCC6 }  
}
```

Border

The CSS property to change the border of an element to Hex FFBCC6 is called "border". The border property can be set on classes, ids or directly on the HTML element.

This example shows the color as border, it can be applied via the CSS property "border" or "border-color".

```
.border, #border, table{ border:4px solid #FFBCC6 }  
}
```

If only the border color should be changed use the property `border-color`.

```
.border{ border-color:#FFBCC6 }
```

If you want to add a box shadow in that color use:

Here you see how a box with a 4 pixel #FFBCC6 colored shadow looks like.

```
.boxshadow{ -moz-box-shadow:4px 4px 4px  
4px #FFBCC6; -webkit-box-shadow:4px 4px  
4px 4px #FFBCC6; box-shadow:4px 4px 4px  
4px #FFBCC6 }
```

Background

The CSS property to change the background color of an element to Hex FFBC66 is called "background". The background property can be set on classes, ids or directly on the HTML element.

```
.background, #background, body{  
background:#FFBC66 }
```

If only the background color should be changed can be used:

```
.background{ background-color:#FFBC66 }
```

This example shows the color as background, it is applied via the CSS property "background".

To optimize and compress your CSS code, you can use our [online CSS compressor and optimizer](#) based on csstidy. If you want to create a linear or radial gradient as background or border, check our [CSS Gradient Generator](#).

Hey! You found this booklet interesting? Support Converting Colors with the new Membership Option!

The pro membership hides all ads, plus gives you double the colors in the color bucket, and more awesome pro features!

[Learn more, Memberships starting at \\$2.50/m!](#)

**Follow me
on Twitter!**

@ConvertingColor