

Converting Colors

Hex(FFBDAE)

Have a look what the booklet for
Hex(FFBDAE) contains.

Hex(FFBDAE)	3
<i>Conversions</i>	4
<i>Details</i>	6
<i>Harmonies</i>	11
<i>Previews</i>	23
<i>Color Blindness Simulation</i>	26
<i>CSS Examples</i>	29

Color

Hex(FFBDAE)

Conversions

Conversions Part 1

Format	Color
Hex	FFBDAE
RGB	255, 189, 174
RGB Percent	100%, 74%, 68%
CMY	0.0000, 0.2588, 0.3176
CMYK	0.00, 0.26, 0.32, 0.00
HSL	11°, 100%, 84%
HSV	11°, 32%, 100%
XYZ	67.0776, 60.7112, 48.2275
YIQ	207.0240, 44.1510, 9.3270

Conversions

Conversions Part 2

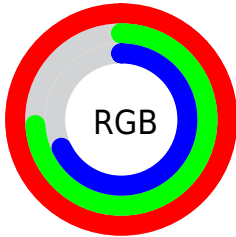
Format	Color
R _Y B	255, 192, 174
Decimal	16760238
CIE Lab	82.22, 21.78, 16.90
CIE LCh	82, 27.568, 37.797
Yxy	60.7112, 0.3811, 0.3449
Android (android.graphics.Color)	4294950318 (0xFFFFBDAE)
YUV	207.0240, -16.2808, 42.0750
Hunter-Lab	77.9174, 17.3118, 17.8442

Details

The Hex color **FFBDAE** is a light color, and the websafe version is hex **FFCCCC**. A complement of this color would be **AEF0FF**, and the grayscale version is **CFCFCF**.

A 20% lighter version of the original color is **FFF5E5**, and **C5877A** is the 20% darker color. If you saturate the color by 10%, you get **FFA894**, and if you desaturate by 10%, it is **FFD2C8**.

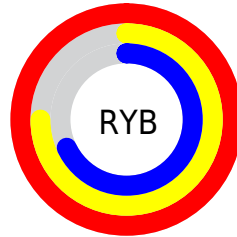
Distribution



Red (100%)

Green (74%)

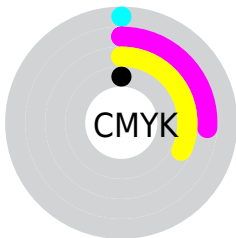
Blue (68%)



Red (100%)

Yellow (75%)

Blue (68%)

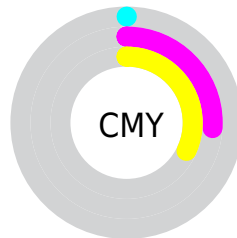


Cyan (0%)

Magenta (26%)

Yellow (32%)

Black (0%)



Cyan (0%)

Magenta (26%)

Yellow (32%)

Brightness & Saturation Gradients

These gradients show how the Hex color FFBD4E changes by changing the brightness by 10 percent. The first figure shows a shift by +10% for each color and the second figure -10%.

Similar to the brightness gradients but the following saturation gradients show a change of the Hex color FFBD4E by changing the saturation by 10% instead.

 FFBD4E

 FFBD4E

FFFFFF

 E2A293

 FFF5E5

 C5877A

 A96E61

 8D5549

 723D32

 58271D

 3F1105

 280000

 000000

 #FFBDAE

 #FFBDAE

 #FFA894

 #FFD2C8

 #FF937B

 #FFE7E1

 #FF7F62

 #FFFBFB

 #FF6A48

#FFFFFF

 #FF552F

 #FF4015

 #FF2F00

Harmonies

Analogous

The Analogous color harmony consists of three colors that are next to each other on the color wheel.



FFBAC7



FFBDAE



F1C49D

Triad

The Triadic color harmony groups three colors that are evenly spaced from another and form a triangle on the color wheel.



FFBDAE



9FDAB8



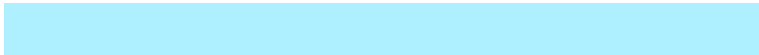
B6CDFF

Complementary

The Complementary color scheme is a pair of colors which are on the opposite of each other on the color wheel.



FFBDAE



AEFOFF

Split Complementary

Split-complementary colors differ from the complementary color scheme. The scheme consists of three colors, the original color and two neighbors of the complement color.



95D4FC



FFBDAE



88DBD3

Square

The Square scheme is like the rectangle color scheme, but the four colors are evenly spaced on the color wheel.



FFBDAE



BCD5A3



82DAEB



D9C4F5

Rectangle

The Rectangle color scheme consists of four colors that form a rectangle on the color wheel.



FFBDAE



E2CA99



82DAEB



ABCFFF

Sweetspot

The Sweet Spot groups the original color and five complimentary colors.



FFBDAE



FFEAE6



FFAEF0



807370



000000



808080

Same Dimension

The Same Dimension uses a secret algorithm to generate beautiful new colors.



FFBDAE



FFB09E



FFE5AE



807573



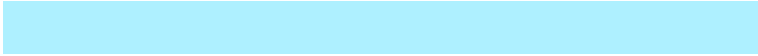
BF2300



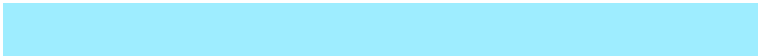
400C00

Inverse Universe

The Inverse Universe completely reimagines the original color for something new.



AEF0FF



9EEDFF



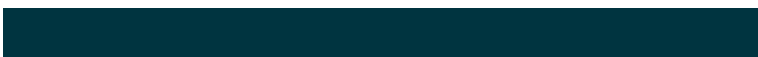
AEC8FF



737D80



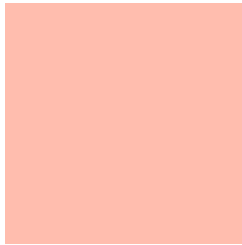
009CBF



003440

Previews

White Background



This preview shows how the Hex color #FFBDAE looks on a white background.

Color Contrast Check

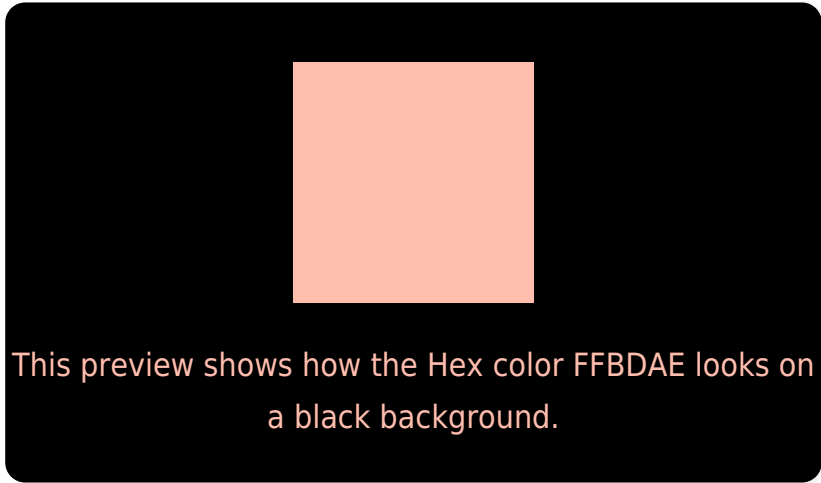
Large Text (above 18pt) WCAG AA × Fail

Any Text WCAG AA × Fail

Large Text (above 18pt) WCAG AAA × Fail

Any Text WCAG AAA × Fail

Black Background



Color Contrast Check

Large Text (above 18pt) WCAG AA ✓ Pass

Any Text WCAG AA ✓ Pass

Large Text (above 18pt) WCAG AAA ✓ Pass

Any Text WCAG AAA ✓ Pass

If you want to check with other color combinations, try the [Color Contrast Checker](#).

Hex FFBDAE Background



This preview shows how black text looks on a background with the Hex color FFBDAE.

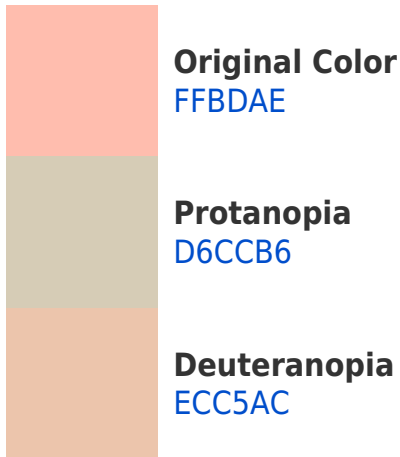


This preview shows how white text looks on a background with the Hex color FFBDAE.

Color Blindness Simulation

Color vision deficiency is a very complex topic, and I could not describe the different causes any better than Wikipedia does, so if you want to learn more, you should check out their [article about color blindness](#).

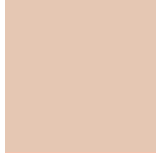
Dichromacy



Trichromacy



Original Color
FFBDAE



Protanomaly
E5C7B3



Deuteranomaly
F3C2AD

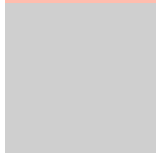


Tritanomaly
FFBBBF

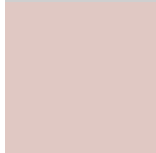
Monochromacy



Original Color
FFBDAE



Achromatopsia
CFCFCF



Achromatomaly
E0C8C3

CSS Examples

Text

The CSS property to change the color of the text to Hex FFBDAE is called "color". The color property can be set on classes, ids or directly on the HTML element.

This example shows how text in the color #FFBDAE looks like.

```
.text, #text, p{  
  color:#FFBDAE  
}
```

If you want to add a text shadow in that color use the text-shadow property, you can generate a text shadow directly with our [CSS Text Shadow Generator](#).

Here you see how black text with a 4 pixel #FFBDAE colored shadow looks like.

```
.shadow{ text-shadow: 4px 4px 2px #FFBDAE
}
```

Border

The CSS property to change the border of an element to Hex FFBDAE is called "border". The border property can be set on classes, ids or directly on the HTML element.

This example shows the color as border, it can be applied via the CSS property "border" or "border-color".

```
.border, #border, table{ border:4px solid
#FFBDAE }
```

If only the border color should be changed use the property `border-color`.

```
.border{ border-color:#FFBDAE }
```

If you want to add a box shadow in that color use:

Here you see how a box with a 4 pixel #FFBDAE colored shadow looks like.

```
.boxshadow{ -moz-box-shadow:4px 4px 4px  
4px #FFBDAE; -webkit-box-shadow:4px 4px  
4px 4px #FFBDAE; box-shadow:4px 4px 4px  
4px #FFBDAE }
```

Background

The CSS property to change the background color of an element to Hex FFBD4E is called "background". The background property can be set on classes, ids or directly on the HTML element.

```
.background, #background, body{  
background:#FFBD4E }
```

If only the background color should be changed can be used:

```
.background{ background-color:#FFBD4E }
```

This example shows the color as background, it is applied via the CSS property "background".

To optimize and compress your CSS code, you can use our [online CSS compressor and optimizer](#) based on csstidy. If you want to create a linear or radial gradient as background or border, check our [CSS Gradient Generator](#).

Hey! You found this booklet interesting? Support Converting Colors with the new Membership Option!

The pro membership hides all ads, plus gives you double the colors in the color bucket, and more awesome pro features!

[Learn more, Memberships starting at \\$2.50/m!](#)

**Follow me
on Twitter!**

@ConvertingColor