

Converting Colors

Hex(FFBDBB)

Have a look what the booklet for
Hex(FFBDBB) contains.

Hex(FFBDBB)	3
<i>Conversions</i>	4
<i>Details</i>	6
<i>Harmonies</i>	11
<i>Previews</i>	23
<i>Color Blindness Simulation</i>	26
<i>CSS Examples</i>	29

Color

Hex(FFBDBB)

Conversions

Conversions Part 1

Format	Color
Hex	FFBDBB
RGB	255, 189, 187
RGB Percent	100%, 74%, 73%
CMY	0.0000, 0.2588, 0.2667
CMYK	0.00, 0.26, 0.27, 0.00
HSL	2°, 100%, 87%
HSV	2°, 27%, 100%
XYZ	68.4072, 61.2430, 55.2293
YIQ	208.5060, 39.9780, 13.3700

Conversions

Conversions Part 2

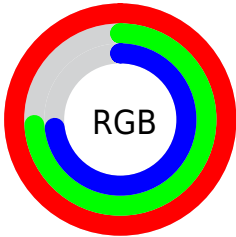
Format	Color
R _Y B	255, 189, 187
Decimal	16760251
CIE Lab	82.51, 23.47, 10.34
CIE LCh	83, 25.651, 23.776
Yxy	61.2430, 0.3700, 0.3313
Android (android.graphics.Color)	4294950331 (0xFFFFBDBB)
YUV	208.5060, -10.6025, 40.7752
Hunter-Lab	78.2579, 19.0800, 12.9375

Details

The Hex color **FFBDBB** is a light color, and the websafe version is hex **FFCCCC**. A complement of this color would be **BBFDFF**, and the grayscale version is **D1D1D1**.

A 20% lighter version of the original color is **FFF6F3**, and **C58786** is the 20% darker color. If you saturate the color by 10%, you get **FFA4A2**, and if you desaturate by 10%, it is **FFD6D4**.

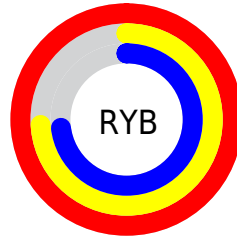
Distribution



Red (100%)

Green (74%)

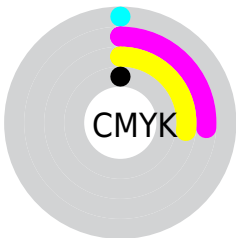
Blue (73%)



Red (100%)

Yellow (74%)

Blue (73%)

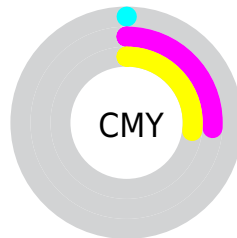


Cyan (0%)

Magenta (26%)

Yellow (27%)

Black (0%)



Cyan (0%)

Magenta (26%)

Yellow (27%)

Brightness & Saturation Gradients

These gradients show how the Hex color `FFBDBB` changes by changing the brightness by 10 percent. The first figure shows a shift by +10% for each color and the second figure -10%.

Similar to the brightness gradients but the following saturation gradients show a change of the Hex color `FFBDBB` by changing the saturation by 10% instead.

 #FFBDBB

 #FFBDBB

#FFFFFF

 #E2A2A0

 #FFF6F3

 #C58786

 #A96E6D

 #8E5554

 #733D3D

 #592628

 #401013

 #2A0000

 #000000

 #FFBDBB

 #FFBDBB

 #FFA4A2

 #FFD6D4

 #FF8C88

 #FFEFEE

 #FF736E

#FFFFFF

 #FF5A55

 #FF413B

 #FF2922

 #FF1008

 #FF0800

Harmonies

Analogous

The Analogous color harmony consists of three colors that are next to each other on the color wheel.



FABDD3



FFBDBB



F7C2A7

Triad

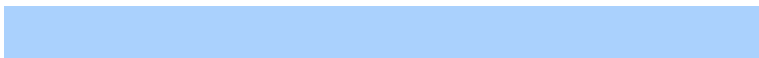
The Triadic color harmony groups three colors that are evenly spaced from another and form a triangle on the color wheel.



FFBDBB



AFD8B0



AAD1FD

Complementary

The Complementary color scheme is a pair of colors which are on the opposite of each other on the color wheel.



FFDBBB



BBDFDF

Split Complementary

Split-complementary colors differ from the complementary color scheme. The scheme consists of three colors, the original color and two neighbors of the complement color.



90D7F3



FFBDBB



97DBC7

Square

The Square scheme is like the rectangle color scheme, but the four colors are evenly spaced on the color wheel.



FFBDBB



CBD2A1



89DBE0



CBC9F9

Rectangle

The Rectangle color scheme consists of four colors that form a rectangle on the color wheel.



FFBDBB



EBC7A0



89DBE0



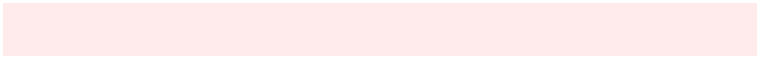
A0D3FB

Sweetspot

The Sweet Spot groups the original color and five complimentary colors.



FFBDBB



FFEDEB



FFBBFE



807373



000000



808080

Same Dimension

The Same Dimension uses a secret algorithm to generate beautiful new colors.



FFBDBB



FFB0AD



FFDEBB



807373



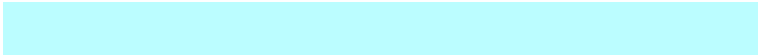
BF0600



400200

Inverse Universe

The Inverse Universe completely reimagines the original color for something new.



BBFDFF



ADFDFF



BBDCFF



737F80



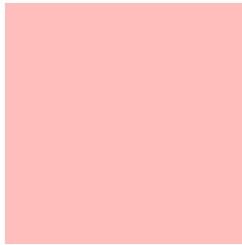
00BABF



003E40

Previews

White Background



This preview shows how the Hex color #FFBDBB looks on a white background.

Color Contrast Check

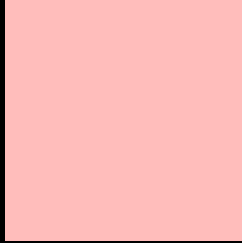
Large Text (above 18pt) WCAG AA × Fail

Any Text WCAG AA × Fail

Large Text (above 18pt) WCAG AAA × Fail

Any Text WCAG AAA × Fail

Black Background



This preview shows how the Hex color FFBDBB looks on a black background.

Color Contrast Check

Large Text (above 18pt) WCAG AA ✓ Pass

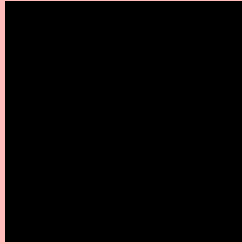
Any Text WCAG AA ✓ Pass

Large Text (above 18pt) WCAG AAA ✓ Pass

Any Text WCAG AAA ✓ Pass

If you want to check with other color combinations, try the [Color Contrast Checker](#).

Hex FFBDBB Background



This preview shows how black text looks on a background with the Hex color FFBDBB.

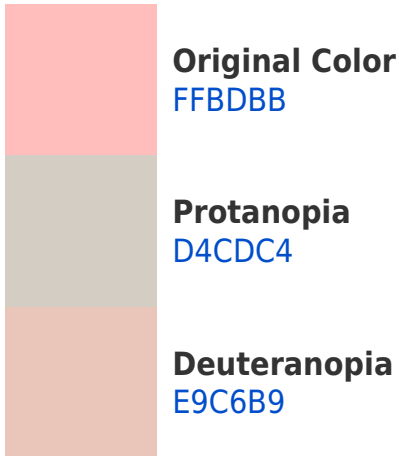


This preview shows how white text looks on a background with the Hex color FFBDBB.

Color Blindness Simulation

Color vision deficiency is a very complex topic, and I could not describe the different causes any better than Wikipedia does, so if you want to learn more, you should check out their [article about color blindness](#).

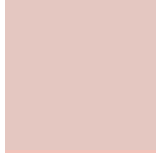
Dichromacy



Trichromacy



Original Color
#FBDDBB



Protanomaly
#E4C7C1



Deuteranomaly
#F1C3BA

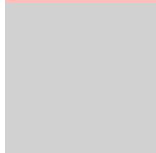


Tritanomaly
#FBBCC4

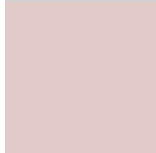
Monochromacy



Original Color
#FBDDBB



Achromatopsia
#D1D1D1



Achromatomaly
#E2CAC9

CSS Examples

Text

The CSS property to change the color of the text to Hex FFBDBB is called "color". The color property can be set on classes, ids or directly on the HTML element.

This example shows how text in the color #FFBDBB looks like.

```
.text, #text, p{  
    color:#FFBDBB  
}
```

If you want to add a text shadow in that color use the text-shadow property, you can generate a text shadow directly with our [CSS Text Shadow Generator](#).

Here you see how black text with a 4 pixel #FFBDBB colored shadow looks like.

```
.shadow{ text-shadow: 4px 4px 2px #FFBDBB
}
```

Border

The CSS property to change the border of an element to Hex FFBDBB is called "border". The border property can be set on classes, ids or directly on the HTML element.

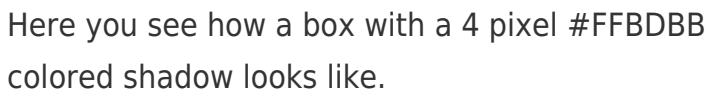
This example shows the color as border, it can be applied via the CSS property "border" or "border-color".

```
.border, #border, table{ border:4px solid
#FFBDBB }
```

If only the border color should be changed use the property `border-color`.

```
.border{ border-color:#FFBDBB }
```

If you want to add a box shadow in that color use:



Here you see how a box with a 4 pixel #FFBDBB colored shadow looks like.

```
.boxshadow{ -moz-box-shadow:4px 4px 4px  
4px #FFBDBB; -webkit-box-shadow:4px 4px  
4px 4px #FFBDBB; box-shadow:4px 4px 4px  
4px #FFBDBB }
```

Background

The CSS property to change the background color of an element to Hex FFBDBB is called "background". The background property can be set on classes, ids or directly on the HTML element.

```
.background, #background, body{  
background:#FFBDBB }
```

If only the background color should be changed can be used:

```
.background{ background-color:#FFBDBB }
```

This example shows the color as background, it is applied via the CSS property "background".

To optimize and compress your CSS code, you can use our [online CSS compressor and optimizer](#) based on csstidy. If you want to create a linear or radial gradient as background or border, check our [CSS Gradient Generator](#).

Hey! You found this booklet interesting? Support Converting Colors with the new Membership Option!

The pro membership hides all ads, plus gives you double the colors in the color bucket, and more awesome pro features!

[Learn more, Memberships starting at \\$2.50/m!](#)

**Follow me
on Twitter!**

@ConvertingColor