

Converting Colors

Hex(FFBDE2)

Have a look what the booklet for
Hex(FFBDE2) contains.

| | |
|--|----|
| Hex(FFBDE2) | 3 |
| <i>Conversions</i> | 4 |
| <i>Details</i> | 6 |
| <i>Harmonies</i> | 11 |
| <i>Previews</i> | 23 |
| <i>Color Blindness Simulation</i> | 26 |
| <i>CSS Examples</i> | 29 |

Color

Hex(FFBDE2)

Conversions

Conversions Part 1

| Format | Color |
|---------------|----------------------------|
| Hex | FFBDE2 |
| RGB | 255, 189, 226 |
| RGB Percent | 100%, 74%, 89% |
| CMY | 0.0000, 0.2588, 0.1137 |
| CMYK | 0.00, 0.26, 0.11, 0.00 |
| HSL | 326°, 100%, 87% |
| HSV | 326°, 26%, 100% |
| XYZ | 73.1651, 63.1462, 80.2837 |
| YIQ | 212.9520, 27.4590, 25.4990 |

Conversions

Conversions Part 2

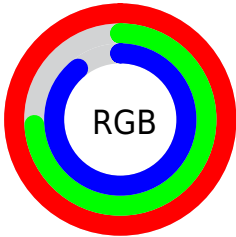
| Format | Color |
|-------------------------------------|------------------------------|
| R _Y B | 255, 189, 226 |
| Decimal | 16760290 |
| CIE Lab | 83.52, 29.28, -9.10 |
| CIE LCh | 84, 30.658, 342.735 |
| Yxy | 63.1462, 0.3378, 0.2915 |
| Android (android.graphics.Color) | 4294950370 (0xFFFFBDE2) |
| YUV | 212.9520, 6.4327, 36.8761 |
| Hunter-Lab | 79.4646, 25.2865, -4.2760 |

Details

The Hex color **FFBDE2** is a light color, and the websafe version is hex **FFCCFF**. A complement of this color would be **BDFFDA**, and the grayscale version is **D5D5D5**.

A 20% lighter version of the original color is **FFF6FF**, and **C687AB** is the 20% darker color. If you saturate the color by 10%, you get **FFA4D7**, and if you desaturate by 10%, it is **FFD7ED**.

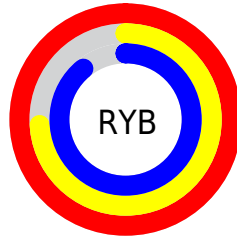
Distribution



Red (100%)

Green (74%)

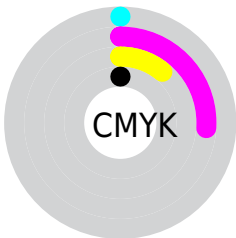
Blue (89%)



Red (100%)

Yellow (74%)

Blue (89%)

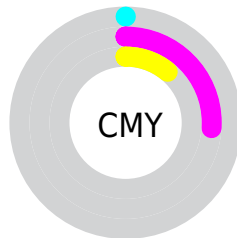


Cyan (0%)

Magenta (26%)

Yellow (11%)

Black (0%)



Cyan (0%)

Magenta (26%)

Yellow (11%)

Brightness & Saturation Gradients

These gradients show how the Hex color FFBDE2 changes by changing the brightness by 10 percent. The first figure shows a shift by +10% for each color and the second figure -10%.

Similar to the brightness gradients but the following saturation gradients show a change of the Hex color FFBDE2 by changing the saturation by 10% instead.

 FFBDE2

 FFBDE2

FFFFFF

 E2A2C6

 FFF6FF

 C687AB

 AA6D90

 8F5477

 743C5E

 5B2546

 420D30

 2B001B

 030000

 #FFBDE2

 #FFBDE2

 #FFA4D7

 #FFD7ED

 #FF8ACC

 #FFF0F8

 #FF71C0

#FFFFFF

 #FF57B5

 #FF3EAA

 #FF249F

 #FF0B94

 #FF008F

Harmonies

Analogous

The Analogous color harmony consists of three colors that are next to each other on the color wheel.



E4C5FB



FFBDE2



FFBBC5

Triad

The Triadic color harmony groups three colors that are evenly spaced from another and form a triangle on the color wheel.



FFBDE2



D9D298



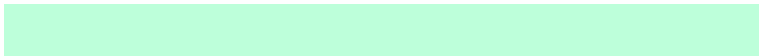
7CDEF6

Complementary

The Complementary color scheme is a pair of colors which are on the opposite of each other on the color wheel.



FFBDE2



BDFFDA

Split Complementary

Split-complementary colors differ from the complementary color scheme. The scheme consists of three colors, the original color and two neighbors of the complement color.



7EE0DC



FFBDE2



B8DAA5

Square

The Square scheme is like the rectangle color scheme, but the four colors are evenly spaced on the color wheel.



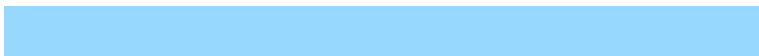
FFBDE2



F4C99A



97DFBE



96D8FF

Rectangle

The Rectangle color scheme consists of four colors that form a rectangle on the color wheel.



FFBDE2



FFBEB2



97DFBE



79DFEE

Sweetspot

The Sweet Spot groups the original color and five complimentary colors.



FFBDE2



FFEBF6



DABDFF



80737A



000000



808080

Same Dimension

The Same Dimension uses a secret algorithm to generate beautiful new colors.



FFBDE2



FFB0DC



FFBDC1



80737A



BF006B



400024

Inverse Universe

The Inverse Universe completely reimagines the original color for something new.



FFBDE2



FFB0DC



BDFFFB



80737A



BF006B



400024

Previews

White Background



This preview shows how the Hex color FFBDE2 looks on a white background.

Color Contrast Check

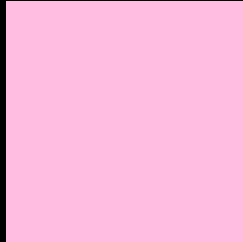
Large Text (above 18pt) WCAG AA × Fail

Any Text WCAG AA × Fail

Large Text (above 18pt) WCAG AAA × Fail

Any Text WCAG AAA × Fail

Black Background



This preview shows how the Hex color FFBDE2 looks on a black background.

Color Contrast Check

Large Text (above 18pt) WCAG AA ✓ Pass

Any Text WCAG AA ✓ Pass

Large Text (above 18pt) WCAG AAA ✓ Pass

Any Text WCAG AAA ✓ Pass

If you want to check with other color combinations, try the [Color Contrast Checker](#).

Hex FFBDE2 Background



This preview shows how black text looks on a background with the Hex color FFBDE2.

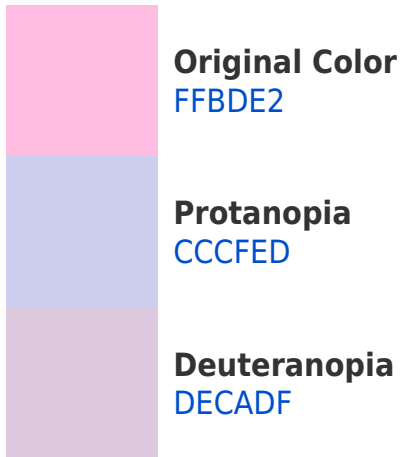


This preview shows how white text looks on a background with the Hex color FFBDE2.

Color Blindness Simulation

Color vision deficiency is a very complex topic, and I could not describe the different causes any better than Wikipedia does, so if you want to learn more, you should check out their [article about color blindness](#).

Dichromacy



Trichromacy



Original Color
FFBDE2



Protanomaly
DFC8E9



Deuteranomaly
EAC5E0

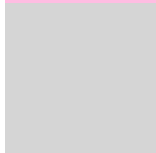


Tritanomaly
FEBFD6

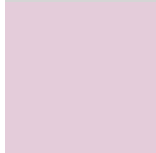
Monochromacy



Original Color
FFBDE2



Achromatopsia
D5D5D5



Achromatomaly
E4CCDA

CSS Examples

Text

The CSS property to change the color of the text to Hex FFBDE2 is called "color". The color property can be set on classes, ids or directly on the HTML element.

This example shows how text in the color #FFBDE2 looks like.

```
.text, #text, p{  
    color:#FFBDE2  
}
```

If you want to add a text shadow in that color use the text-shadow property, you can generate a text shadow directly with our [CSS Text Shadow Generator](#).

Here you see how black text with a 4 pixel #FFBDE2 colored shadow looks like.

```
.shadow{ text-shadow: 4px 4px 2px #FFBDE2
}
```

Border

The CSS property to change the border of an element to Hex FFBDE2 is called "border". The border property can be set on classes, ids or directly on the HTML element.

This example shows the color as border, it can be applied via the CSS property "border" or "border-color".

```
.border, #border, table{ border:4px solid
#FFBDE2 }
```

If only the border color should be changed use the property `border-color`.

```
.border{ border-color:#FFBDE2 }
```

If you want to add a box shadow in that color use:

Here you see how a box with a 4 pixel #FFBDE2 colored shadow looks like.

```
.boxshadow{ -moz-box-shadow:4px 4px 4px  
4px #FFBDE2; -webkit-box-shadow:4px 4px  
4px 4px #FFBDE2; box-shadow:4px 4px 4px  
4px #FFBDE2 }
```

Background

The CSS property to change the background color of an element to Hex FFBDE2 is called "background". The background property can be set on classes, ids or directly on the HTML element.

```
.background, #background, body{  
background:#FFBDE2 }
```

If only the background color should be changed can be used:

```
.background{ background-color:#FFBDE2 }
```

This example shows the color as background, it is applied via the CSS property "background".

To optimize and compress your CSS code, you can use our [online CSS compressor and optimizer](#) based on csstidy. If you want to create a linear or radial gradient as background or border, check our [CSS Gradient Generator](#).

Hey! You found this booklet interesting? Support Converting Colors with the new Membership Option!

The pro membership hides all ads, plus gives you double the colors in the color bucket, and more awesome pro features!

[Learn more, Memberships starting at \\$2.50/m!](#)

**Follow me
on Twitter!**

@ConvertingColor