

Converting Colors

Hex(FFBECB)

Have a look what the booklet for
Hex(FFBECB) contains.

Hex(FFBECB)	3
<i>Conversions</i>	4
<i>Details</i>	6
<i>Harmonies</i>	11
<i>Previews</i>	23
<i>Color Blindness Simulation</i>	26
<i>CSS Examples</i>	29

Color

Hex(FFBECB)

Conversions

Conversions Part 1

Format	Color
Hex	FFBECB
RGB	255, 190, 203
RGB Percent	100%, 75%, 80%
CMY	0.0000, 0.2549, 0.2039
CMYK	0.00, 0.25, 0.20, 0.00
HSL	348°, 100%, 87%
HSV	348°, 25%, 100%
XYZ	70.4329, 62.3987, 64.8318
YIQ	210.9170, 34.5670, 17.8230

Conversions

Conversions Part 2

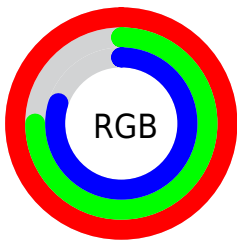
Format	Color
R_{YB}	255, 190, 203
Decimal	16760523
CIE _{Lab}	83.12, 25.20, 2.65
CIE _{LCh}	83, 25.338, 5.999
Yxy	62.3987, 0.3563, 0.3157
Android (android.graphics.Color)	4294950603 (0xFFFFBECB)
YUV	210.9170, -3.9031, 38.6608
Hunter-Lab	78.9929, 20.9197, 6.6339

Details

The Hex color **FFBECB** is a light color, and the websafe version is hex **FFCCCC**. A complement of this color would be **BEFF2**, and the grayscale version is **D3D3D3**.

A 20% lighter version of the original color is **FFF7FF**, and **C58895** is the 20% darker color. If you saturate the color by 10%, you get **FFA5B7**, and if you desaturate by 10%, it is **FFD8DF**.

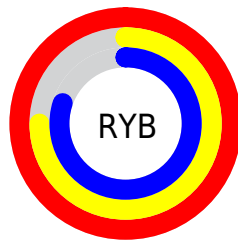
Distribution



Red (100%)

Green (75%)

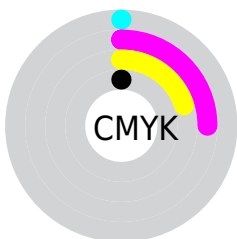
Blue (80%)



Red (100%)

Yellow (75%)

Blue (80%)

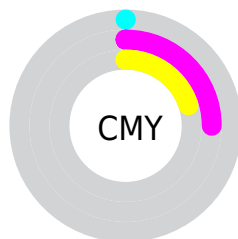


Cyan (0%)

Magenta (25%)

Yellow (20%)

Black (0%)



Cyan (0%)

Magenta (25%)

Yellow (20%)

Brightness & Saturation Gradients

These gradients show how the Hex color FFBECEB changes by changing the brightness by 10 percent. The first figure shows a shift by +10% for each color and the second figure -10%.

Similar to the brightness gradients but the following saturation gradients show a change of the Hex color FFBECEB by changing the saturation by 10% instead.

 FFBECEB

FFFFFF

 FFF7FF

 FFBECEB

 E2A3B0

 C58895

 A96E7B

 8E5662

 743E4B

 5A2734

 41101F

 2B0006

 000000

 FFBECEB

 FFBECEB

 FFA5B7

 FFD8DF

 FF8BA2

 FFF1F4

 FF728E

FFFFFF

 FF5879

 FF3F65

 FF2551

 FF0C3C

 FF0033

Harmonies

Analogous

The Analogous color harmony consists of three colors that are next to each other on the color wheel.



F2C1E3



FFBECB



FEC1B4

Triad

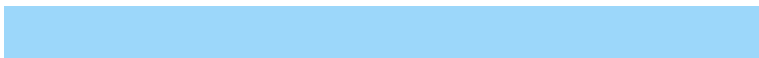
The Triadic color harmony groups three colors that are evenly spaced from another and form a triangle on the color wheel.



FFBECB



C2D6A8



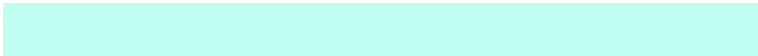
9CD7FA

Complementary

The Complementary color scheme is a pair of colors which are on the opposite of each other on the color wheel.



FFBECB



BEFFF2

Split Complementary

Split-complementary colors differ from the complementary color scheme. The scheme consists of three colors, the original color and two neighbors of the complement color.



8CDBEA



FFBECB



A7DBBB

Square

The Square scheme is like the rectangle color scheme, but the four colors are evenly spaced on the color wheel.



FFBECB



DCCFA0



92DDD3



B9D0FE

Rectangle

The Rectangle color scheme consists of four colors that form a rectangle on the color wheel.



FFBECB



F7C5A8



92DDD3



94D9F6

Sweetspot

The Sweet Spot groups the original color and five complimentary colors.



FFBECB



FFEBEF



F2BEFF



807375



000000



808080

Same Dimension

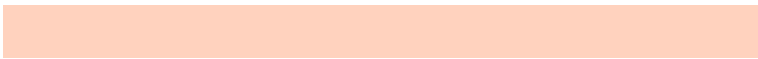
The Same Dimension uses a secret algorithm to generate beautiful new colors.



FFBECB



FFB0C0



FFD2BE



807375



BF0026



40000D

Inverse Universe

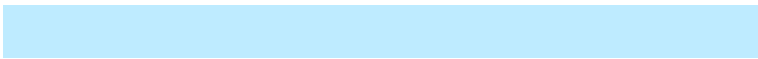
The Inverse Universe completely reimagines the original color for something new.



FFBECB



FFB0C0



BEEBFF



807375



BF0026



40000D

Previews

White Background



This preview shows how the Hex color FFBECB looks on a white background.

Color Contrast Check

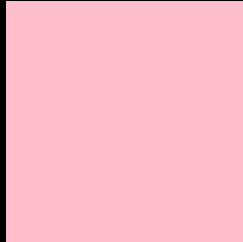
Large Text (above 18pt) WCAG AA × Fail

Any Text WCAG AA × Fail

Large Text (above 18pt) WCAG AAA × Fail

Any Text WCAG AAA × Fail

Black Background



This preview shows how the Hex color FFBECE looks on a black background.

Color Contrast Check

Large Text (above 18pt) WCAG AA ✓ Pass

Any Text WCAG AA ✓ Pass

Large Text (above 18pt) WCAG AAA ✓ Pass

Any Text WCAG AAA ✓ Pass

If you want to check with other color combinations, try the [Color Contrast Checker](#).

Hex FFBECE Background



This preview shows how black text looks on a background with the Hex color FFBECE.

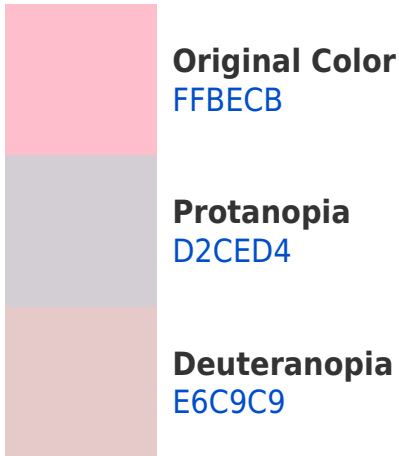


This preview shows how white text looks on a background with the Hex color FFBECE.

Color Blindness Simulation

Color vision deficiency is a very complex topic, and I could not describe the different causes any better than Wikipedia does, so if you want to learn more, you should check out their [article about color blindness](#).

Dichromacy

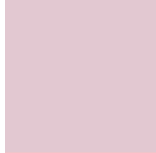




Trichromacy



Original Color
FFBECB



Protanomaly
E2C8D1



Deuteranomaly
EFC5CA

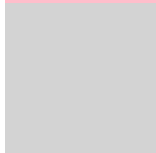


Tritanomaly
FFBECC

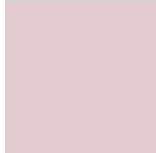
Monochromacy



Original Color
FFBECB



Achromatopsia
D3D3D3



Achromatomaly
E3CBD0

CSS Examples

Text

The CSS property to change the color of the text to Hex FFBECEB is called "color". The color property can be set on classes, ids or directly on the HTML element.

This example shows how text in the color #FFBECEB looks like.

```
.text, #text, p{  
    color:#FFBECEB  
}
```

If you want to add a text shadow in that color use the text-shadow property, you can generate a text shadow directly with our [CSS Text Shadow Generator](#).

Here you see how black text with a 4 pixel #FFBECB colored shadow looks like.

```
.shadow{ text-shadow: 4px 4px 2px #FFBECB
}
```

Border

The CSS property to change the border of an element to Hex FFBECB is called "border". The border property can be set on classes, ids or directly on the HTML element.

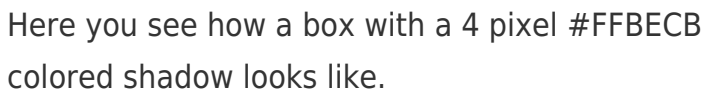
This example shows the color as border, it can be applied via the CSS property "border" or "border-color".

```
.border, #border, table{ border:4px solid
#FFBECB }
```

If only the border color should be changed use the property `border-color`.

```
.border{ border-color:#FFBECB }
```

If you want to add a box shadow in that color use:



Here you see how a box with a 4 pixel #FFBECB colored shadow looks like.

```
.boxshadow{ -moz-box-shadow:4px 4px 4px  
4px #FFBECB; -webkit-box-shadow:4px 4px  
4px 4px #FFBECB; box-shadow:4px 4px 4px  
4px #FFBECB }
```

Background

The CSS property to change the background color of an element to Hex FFBECE is called "background". The background property can be set on classes, ids or directly on the HTML element.

```
.background, #background, body{  
background:#FFBECE }
```

If only the background color should be changed can be used:

```
.background{ background-color:#FFBECE }
```

This example shows the color as background, it is applied via the CSS property "background".

To optimize and compress your CSS code, you can use our [online CSS compressor and optimizer](#) based on csstidy. If you want to create a linear or radial gradient as background or border, check our [CSS Gradient Generator](#).

Hey! You found this booklet interesting? Support Converting Colors with the new Membership Option!

The pro membership hides all ads, plus gives you double the colors in the color bucket, and more awesome pro features!

[Learn more, Memberships starting at \\$2.50/m!](#)

**Follow me
on Twitter!**

@ConvertingColor