

Converting Colors

Hex(FFBFC3)

Have a look what the booklet for
Hex(FFBFC3) contains.

Hex(FFBFC3)	3
<i>Conversions</i>	4
<i>Details</i>	6
<i>Harmonies</i>	11
<i>Previews</i>	23
<i>Color Blindness Simulation</i>	26
<i>CSS Examples</i>	29

Color

Hex(FFBFC3)

Conversions

Conversions Part 1

Format	Color
Hex	FFBFC3
RGB	255, 191, 195
RGB Percent	100%, 75%, 76%
CMY	0.0000, 0.2510, 0.2353
CMYK	0.00, 0.25, 0.24, 0.00
HSL	356°, 100%, 87%
HSV	356°, 25%, 100%
XYZ	69.7211, 62.4617, 60.0114
YIQ	210.5920, 36.8600, 14.8120

Conversions

Conversions Part 2

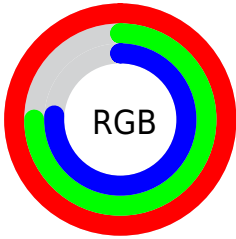
Format	Color
R _Y B	255, 191, 195
Decimal	16760771
CIE Lab	83.16, 23.53, 6.98
CIE LCh	83, 24.541, 16.534
Yxy	62.4617, 0.3628, 0.3250
Android (android.graphics.Color)	4294950851 (0xFFFFBFC3)
YUV	210.5920, -7.6869, 38.9458
Hunter-Lab	79.0327, 19.1619, 10.3027

Details

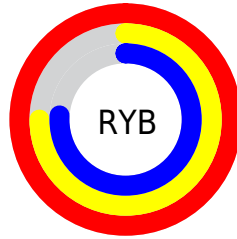
The Hex color **FFBFC3** is a light color, and the websafe version is hex **FFCCCC**. A complement of this color would be **BFFFFB**, and the grayscale version is **D3D3D3**.

A 20% lighter version of the original color is **FFF8FB**, and **C5898D** is the 20% darker color. If you saturate the color by 10%, you get **FFA6AB**, and if you desaturate by 10%, it is **FFD9DB**.

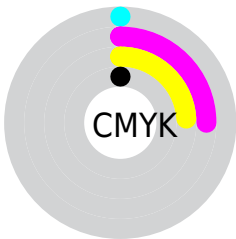
Distribution



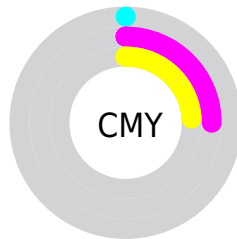
- Red (100%)
- Green (75%)
- Blue (76%)



- Red (100%)
- Yellow (75%)
- Blue (76%)



- Cyan (0%)
- Magenta (25%)
- Yellow (24%)
- Black (0%)



- Cyan (0%)
- Magenta (25%)
- Yellow (24%)

Brightness & Saturation Gradients

These gradients show how the Hex color `FFBFC3` changes by changing the brightness by 10 percent. The first figure shows a shift by +10% for each color and the second figure -10%.

Similar to the brightness gradients but the following saturation gradients show a change of the Hex color `FFBFC3` by changing the saturation by 10% instead.

 #FFBFC3

 #FFBFC3

#FFFFFF

 #E2A4A8

 #FFF8FB

 #C5898D

 #A96F74

 #8E575B

 #733F44

 #5A282E

 #401119

 #2B0000

 #000000

 #FFBFC3

 #FFBFC3

 #FFA6AB

 #FFD9DB

 #FF8C93

 #FFF2F3

 #FF737B

#FFFFFF

 #FF5963

 #FF404B

 #FF2634

 #FF0D1C

 #FF0010

Harmonies

Analogous

The Analogous color harmony consists of three colors that are next to each other on the color wheel.



F7C0DB



FFBFC3



FAC3AF

Triad

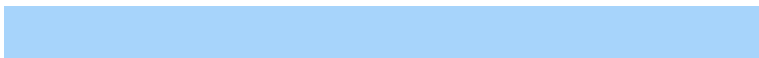
The Triadic color harmony groups three colors that are evenly spaced from another and form a triangle on the color wheel.



FFBFC3



B9D8AF



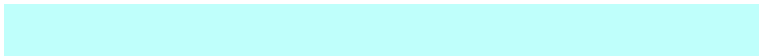
A7D4FB

Complementary

The Complementary color scheme is a pair of colors which are on the opposite of each other on the color wheel.



FFBFC3



BFFFFB

Split Complementary

Split-complementary colors differ from the complementary color scheme. The scheme consists of three colors, the original color and two neighbors of the complement color.



92DAF0



FFBFC3



A0DCC4

Square

The Square scheme is like the rectangle color scheme, but the four colors are evenly spaced on the color wheel.



FFBFC3



D3D2A3



90DCDB



C5CDFB

Rectangle

The Rectangle color scheme consists of four colors that form a rectangle on the color wheel.



FFBFC3



F1C8A5



90DCDB



9ED6F9

Sweetspot

The Sweet Spot groups the original color and five complimentary colors.



FFBFC3



FFEDEC



FBBFFF



807374



000000



808080

Same Dimension

The Same Dimension uses a secret algorithm to generate beautiful new colors.



FFBFC3



FFB3B7



FFDDBF



807374



BF000C



400004

Inverse Universe

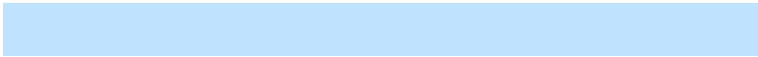
The Inverse Universe completely reimagines the original color for something new.



FFBFC3



FFB3B7



BFE3FF



807374



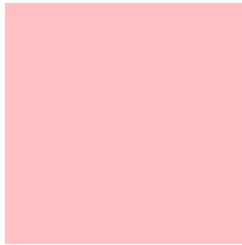
BF000C



400004

Previews

White Background



This preview shows how the Hex color FFBFC3 looks on a white background.

Color Contrast Check

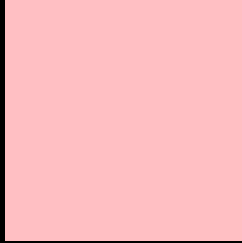
Large Text (above 18pt) WCAG AA × Fail

Any Text WCAG AA × Fail

Large Text (above 18pt) WCAG AAA × Fail

Any Text WCAG AAA × Fail

Black Background



This preview shows how the Hex color FFBFC3 looks on a black background.

Color Contrast Check

Large Text (above 18pt) WCAG AA ✓ Pass

Any Text WCAG AA ✓ Pass

Large Text (above 18pt) WCAG AAA ✓ Pass

Any Text WCAG AAA ✓ Pass

If you want to check with other color combinations, try the [Color Contrast Checker](#).

Hex FFBFC3 Background



This preview shows how black text looks on a background with the Hex color FFBFC3.

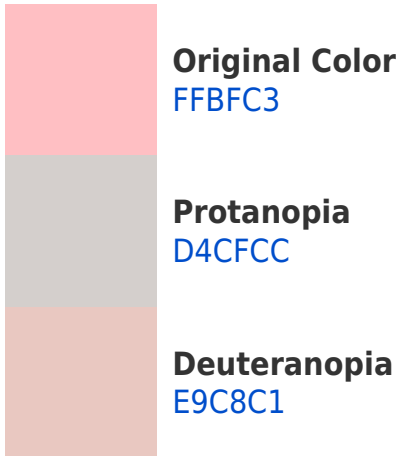


This preview shows how white text looks on a background with the Hex color FFBFC3.

Color Blindness Simulation

Color vision deficiency is a very complex topic, and I could not describe the different causes any better than Wikipedia does, so if you want to learn more, you should check out their [article about color blindness](#).

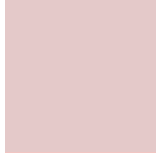
Dichromacy



Trichromacy



Original Color
FFBFC3



Protanomaly
E4C9C9



Deuteranomaly
F1C5C2

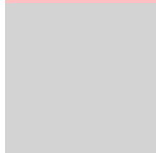


Tritanomaly
FFBEC9

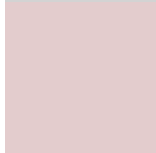
Monochromacy



Original Color
FFBFC3



Achromatopsia
D3D3D3



Achromatomaly
E3CCCD

CSS Examples

Text

The CSS property to change the color of the text to Hex FFBF3 is called "color". The color property can be set on classes, ids or directly on the HTML element.

This example shows how text in the color #FFBF3 looks like.

```
.text, #text, p{  
    color:#FFBF3  
}
```

If you want to add a text shadow in that color use the text-shadow property, you can generate a text shadow directly with our [CSS Text Shadow Generator](#).

Here you see how black text with a 4 pixel #FFBFC3 colored shadow looks like.

```
.shadow{ text-shadow: 4px 4px 2px #FFBFC3
}
```

Border

The CSS property to change the border of an element to Hex FFBFC3 is called "border". The border property can be set on classes, ids or directly on the HTML element.

This example shows the color as border, it can be applied via the CSS property "border" or "border-color".

```
.border, #border, table{ border:4px solid
#FFBFC3 }
```

If only the border color should be changed use the property `border-color`.

```
.border{ border-color:#FFBFC3 }
```

If you want to add a box shadow in that color use:

Here you see how a box with a 4 pixel #FFBFC3 colored shadow looks like.

```
.boxshadow{ -moz-box-shadow:4px 4px 4px  
4px #FFBFC3; -webkit-box-shadow:4px 4px  
4px 4px #FFBFC3; box-shadow:4px 4px 4px  
4px #FFBFC3 }
```

Background

The CSS property to change the background color of an element to Hex FFBFC3 is called "background". The background property can be set on classes, ids or directly on the HTML element.

```
.background, #background, body{  
background:#FFBFC3 }
```

If only the background color should be changed can be used:

```
.background{ background-color:#FFBFC3 }
```

This example shows the color as background, it is applied via the CSS property "background".

To optimize and compress your CSS code, you can use our [online CSS compressor and optimizer](#) based on csstidy. If you want to create a linear or radial gradient as background or border, check our [CSS Gradient Generator](#).

Hey! You found this booklet interesting? Support Converting Colors with the new Membership Option!

The pro membership hides all ads, plus gives you double the colors in the color bucket, and more awesome pro features!

[Learn more, Memberships starting at \\$2.50/m!](#)

**Follow me
on Twitter!**

@ConvertingColor