

Converting Colors

Hex(FFBFD0)

Have a look what the booklet for
Hex(FFBFD0) contains.

Hex(FFBFD0)	3
<i>Conversions</i>	4
<i>Details</i>	6
<i>Harmonies</i>	11
<i>Previews</i>	23
<i>Color Blindness Simulation</i>	26
<i>CSS Examples</i>	29

Color

Hex(FFBFD0)

Conversions

Conversions Part 1

Format	Color
Hex	FFBFD0
RGB	255, 191, 208
RGB Percent	100%, 75%, 82%
CMY	0.0000, 0.2510, 0.1843
CMYK	0.00, 0.25, 0.18, 0.00
HSL	344°, 100%, 87%
HSV	344°, 25%, 100%
XYZ	71.2560, 63.0757, 68.0937
YIQ	212.0740, 32.6870, 18.8550

Conversions

Conversions Part 2

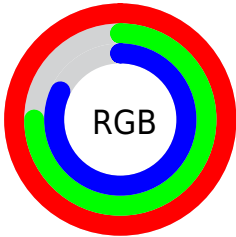
Format	Color
R_{YB}	255, 191, 208
Decimal	16760784
CIE _{Lab}	83.48, 25.42, 0.49
CIE _{LCh}	83, 25.420, 1.101
Yxy	63.0757, 0.3520, 0.3116
Android (android.graphics.Color)	4294950864 (0xFFFFBFD0)
YUV	212.0740, -2.0085, 37.6461
Hunter-Lab	79.4202, 21.1652, 4.7597

Details

The Hex color **FFBFD0** is a light color, and the websafe version is hex **FFCCCC**. A complement of this color would be **BFFFEE**, and the grayscale version is **D4D4D4**.

A 20% lighter version of the original color is **FFF8FF**, and **C5899A** is the 20% darker color. If you saturate the color by 10%, you get **FFA6BD**, and if you desaturate by 10%, it is **FFD9E3**.

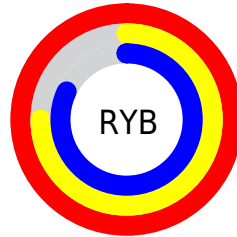
Distribution



Red (100%)

Green (75%)

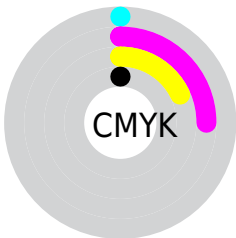
Blue (82%)



Red (100%)

Yellow (75%)

Blue (82%)

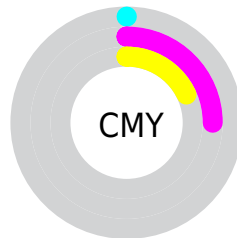


Cyan (0%)

Magenta (25%)

Yellow (18%)

Black (0%)



Cyan (0%)

Magenta (25%)

Yellow (18%)

Brightness & Saturation Gradients

These gradients show how the Hex color `FFBFD0` changes by changing the brightness by 10 percent. The first figure shows a shift by +10% for each color and the second figure -10%.

Similar to the brightness gradients but the following saturation gradients show a change of the Hex color `FFBFD0` by changing the saturation by 10% instead.

 #FFBFD0

 #FFBFD0

#FFFFFF

 #E2A4B4

 #FFF8FF

 #C5899A

 #AA6F80

 #8E5667

 #743E4F

 #5A2738

 #411023

 #2B000C

 #000000

 #FFBFD0

 #FFBFD0

 #FFA6BD

 #FFD9E3

 #FF8CAB

 #FFF2F5

 #FF7398

#FFFFFF

 #FF5985

 #FF4072

 #FF2660

 #FF0D4D

 #FF0044

Harmonies

Analogous

The Analogous color harmony consists of three colors that are next to each other on the color wheel.



F0C2E8



FFBFD0



FFC1B8

Triad

The Triadic color harmony groups three colors that are evenly spaced from another and form a triangle on the color wheel.



FFBFD0



C7D6A7



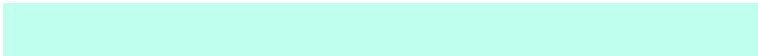
99D9F9

Complementary

The Complementary color scheme is a pair of colors which are on the opposite of each other on the color wheel.



FFBFD0



BFFFEE

Split Complementary

Split-complementary colors differ from the complementary color scheme. The scheme consists of three colors, the original color and two neighbors of the complement color.



8DDDE8



FFBFD0



ACDBB8

Square

The Square scheme is like the rectangle color scheme, but the four colors are evenly spaced on the color wheel.



FFBFD0



E1CFA0



95DED0



B5D2FF

Rectangle

The Rectangle color scheme consists of four colors that form a rectangle on the color wheel.



FFBFD0



FBC4AC



95DED0



92DAF4

Sweetspot

The Sweet Spot groups the original color and five complimentary colors.



FFBFD0



FFEBF0



EEBFFF



807376



000000



808080

Same Dimension

The Same Dimension uses a secret algorithm to generate beautiful new colors.



FFBFD0



FFB3C7



FFCEBF



807376



BF0033



400011

Inverse Universe

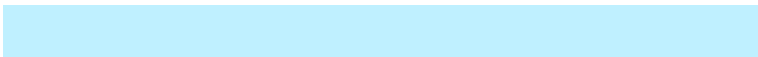
The Inverse Universe completely reimagines the original color for something new.



FFBFD0



FFB3C7



BFF0FF



807376



BF0033



400011

Previews

White Background



This preview shows how the Hex color FFBFD0 looks on a white background.

Color Contrast Check

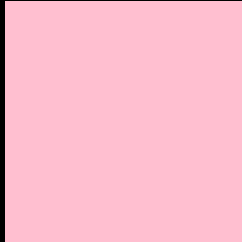
Large Text (above 18pt) WCAG AA × Fail

Any Text WCAG AA × Fail

Large Text (above 18pt) WCAG AAA × Fail

Any Text WCAG AAA × Fail

Black Background



This preview shows how the Hex color FFBFD0 looks on a black background.

Color Contrast Check

Large Text (above 18pt) WCAG AA ✓ Pass

Any Text WCAG AA ✓ Pass

Large Text (above 18pt) WCAG AAA ✓ Pass

Any Text WCAG AAA ✓ Pass

If you want to check with other color combinations, try the [Color Contrast Checker](#).

Hex FFBFD0 Background



This preview shows how black text looks on a background with the Hex color FFBFD0.

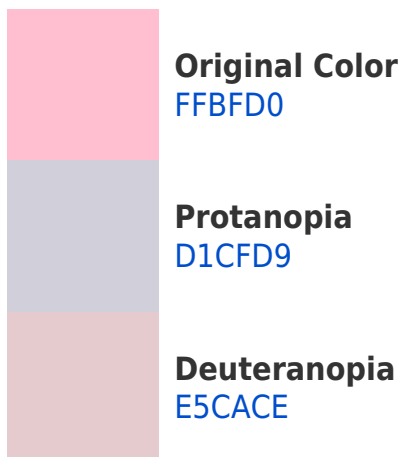


This preview shows how white text looks on a background with the Hex color FFBFD0.

Color Blindness Simulation

Color vision deficiency is a very complex topic, and I could not describe the different causes any better than Wikipedia does, so if you want to learn more, you should check out their [article about color blindness](#).

Dichromacy



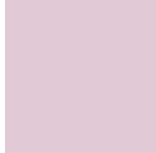


Tritanopia
FFBFCE

Trichromacy



Original Color
FFBFD0



Protanomaly
E2C9D6



Deuteranomaly
EEC6CF

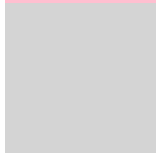


Tritanomaly
FFBFCF

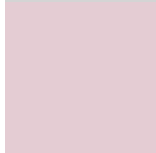
Monochromacy



Original Color
FFBFD0



Achromatopsia
D4D4D4



Achromatomaly
E4CCD3

CSS Examples

Text

The CSS property to change the color of the text to Hex FFbfd0 is called "color". The color property can be set on classes, ids or directly on the HTML element.

This example shows how text in the color #FFbfd0 looks like.

```
.text, #text, p{  
    color:#FFbfd0  
}
```

If you want to add a text shadow in that color use the text-shadow property, you can generate a text shadow directly with our [CSS Text Shadow Generator](#).

Here you see how black text with a 4 pixel #FFBFD0 colored shadow looks like.

```
.shadow{ text-shadow: 4px 4px 2px #FFBFD0
}
```

Border

The CSS property to change the border of an element to Hex FFBFD0 is called "border". The border property can be set on classes, ids or directly on the HTML element.

This example shows the color as border, it can be applied via the CSS property "border" or "border-color".

```
.border, #border, table{ border:4px solid
#FFBFD0 }
```

If only the border color should be changed use the property `border-color`.

```
.border{ border-color:#FFBFD0 }
```

If you want to add a box shadow in that color use:

Here you see how a box with a 4 pixel #FFBFD0 colored shadow looks like.

```
.boxshadow{ -moz-box-shadow:4px 4px 4px  
4px #FFBFD0; -webkit-box-shadow:4px 4px  
4px 4px #FFBFD0; box-shadow:4px 4px 4px  
4px #FFBFD0 }
```

Background

The CSS property to change the background color of an element to Hex FFBFD0 is called "background". The background property can be set on classes, ids or directly on the HTML element.

```
.background, #background, body{  
background:#FFBFD0 }
```

If only the background color should be changed can be used:

```
.background{ background-color:#FFBFD0 }
```

This example shows the color as background, it is applied via the CSS property "background".

To optimize and compress your CSS code, you can use our [online CSS compressor and optimizer](#) based on csstidy. If you want to create a linear or radial gradient as background or border, check our [CSS Gradient Generator](#).

Hey! You found this booklet interesting? Support Converting Colors with the new Membership Option!

The pro membership hides all ads, plus gives you double the colors in the color bucket, and more awesome pro features!

[Learn more, Memberships starting at \\$2.50/m!](#)

**Follow me
on Twitter!**

@ConvertingColor