

Converting Colors

Hex(FFBFD2)

Have a look what the booklet for
Hex(FFBFD2) contains.

Hex(FFBFD2)	3
<i>Conversions</i>	4
<i>Details</i>	6
<i>Harmonies</i>	11
<i>Previews</i>	23
<i>Color Blindness Simulation</i>	26
<i>CSS Examples</i>	29

Color

Hex(FFBFD2)

Conversions

Conversions Part 1

Format	Color
Hex	FFBFD2
RGB	255, 191, 210
RGB Percent	100%, 75%, 82%
CMY	0.0000, 0.2510, 0.1765
CMYK	0.00, 0.25, 0.18, 0.00
HSL	342°, 100%, 87%
HSV	342°, 25%, 100%
XYZ	71.5037, 63.1747, 69.3981
YIQ	212.3020, 32.0450, 19.4770

Conversions

Conversions Part 2

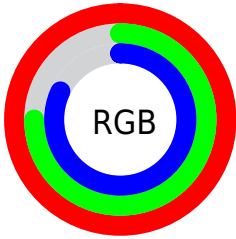
Format	Color
R _Y B	255, 191, 210
Decimal	16760786
CIE Lab	83.53, 25.72, -0.51
CIE LCh	84, 25.722, 358.871
Yxy	63.1747, 0.3504, 0.3096
Android (android.graphics.Color)	4294950866 (0xFFFFBFD2)
YUV	212.3020, -1.1349, 37.4461
Hunter-Lab	79.4825, 21.4868, 3.8703

Details

The Hex color **FFBFD2** is a light color, and the websafe version is hex **FFCCCC**. A complement of this color would be **BFFFEC**, and the grayscale version is **D4D4D4**.

A 20% lighter version of the original color is **FFF8FF**, and **C5899C** is the 20% darker color. If you saturate the color by 10%, you get **FFA6C0**, and if you desaturate by 10%, it is **FFD9E4**.

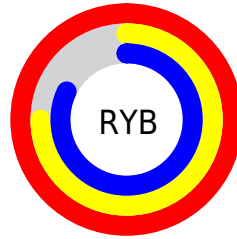
Distribution



Red (100%)

Green (75%)

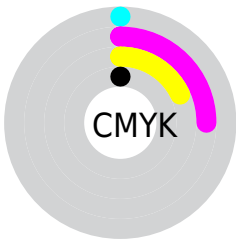
Blue (82%)



Red (100%)

Yellow (75%)

Blue (82%)

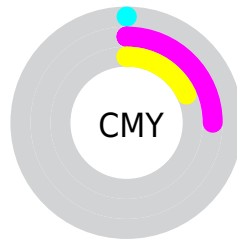


Cyan (0%)

Magenta (25%)

Yellow (18%)

Black (0%)



Cyan (0%)

Magenta (25%)

Yellow (18%)

Brightness & Saturation Gradients

These gradients show how the Hex color FFbfd2 changes by changing the brightness by 10 percent. The first figure shows a shift by +10% for each color and the second figure -10%.

Similar to the brightness gradients but the following saturation gradients show a change of the Hex color FFbfd2 by changing the saturation by 10% instead.

 FFbfd2

 FFbfd2

FFFFFF

 E2A4B6

 FFF8FF

 C5899C

 AA6F82

 8E5669

 743E50

 5A273A

 421024

 2B000F

 000000

 #FFBFD2

 #FFBFD2

 #FFA6C0

 #FFD9E4

 #FF8CAE

 #FFF2F6

 #FF739C

#FFFFFF

 #FF598A

 #FF4078

 #FF2666

 #FF0D54

 #FF004C

Harmonies

Analogous

The Analogous color harmony consists of three colors that are next to each other on the color wheel.



EFC3EA



FFBFD2



FFC0BA

Triad

The Triadic color harmony groups three colors that are evenly spaced from another and form a triangle on the color wheel.



FFBFD2



C9D6A5



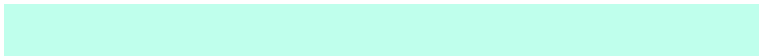
96D9F9

Complementary

The Complementary color scheme is a pair of colors which are on the opposite of each other on the color wheel.



FFBFD2



BFFFE0

Split Complementary

Split-complementary colors differ from the complementary color scheme. The scheme consists of three colors, the original color and two neighbors of the complement color.



8CDDE7



FFBFD2



AEDBB6

Square

The Square scheme is like the rectangle color scheme, but the four colors are evenly spaced on the color wheel.



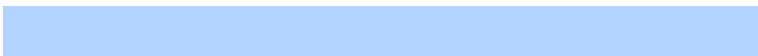
FFBFD2



E3CEA0



96DECE



B2D3FF

Rectangle

The Rectangle color scheme consists of four colors that form a rectangle on the color wheel.



FFBFD2



FCC4AD



96DECE



90DBF4

Sweetspot

The Sweet Spot groups the original color and five complimentary colors.



FFBFD2



FFEBF1



ECBFFF



807377



000000



808080

Same Dimension

The Same Dimension uses a secret algorithm to generate beautiful new colors.



FFBFD2



FFB3C9



FFCCBF



807377



BF0039



400013

Inverse Universe

The Inverse Universe completely reimagines the original color for something new.



FFBFD2



FFB3C9



BFF2FF



807377



BF0039



400013

Previews

White Background



This preview shows how the Hex color FFBFD2 looks on a white background.

Color Contrast Check

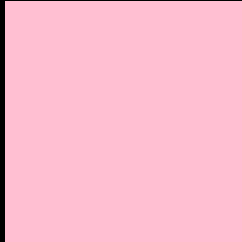
Large Text (above 18pt) WCAG AA × Fail

Any Text WCAG AA × Fail

Large Text (above 18pt) WCAG AAA × Fail

Any Text WCAG AAA × Fail

Black Background



This preview shows how the Hex color FFBFD2 looks on a black background.

Color Contrast Check

Large Text (above 18pt) WCAG AA ✓ Pass

Any Text WCAG AA ✓ Pass

Large Text (above 18pt) WCAG AAA ✓ Pass

Any Text WCAG AAA ✓ Pass

If you want to check with other color combinations, try the [Color Contrast Checker](#).

Hex FFBFD2 Background



This preview shows how black text looks on a background with the Hex color FFBFD2.

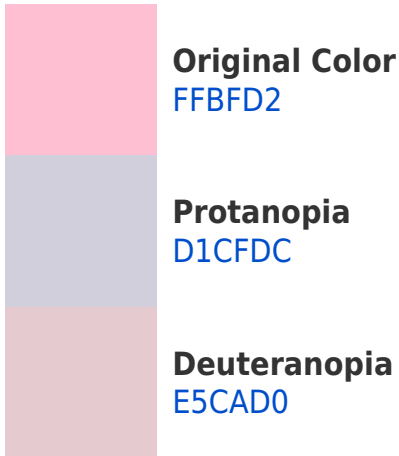


This preview shows how white text looks on a background with the Hex color FFBFD2.

Color Blindness Simulation

Color vision deficiency is a very complex topic, and I could not describe the different causes any better than Wikipedia does, so if you want to learn more, you should check out their [article about color blindness](#).

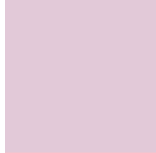
Dichromacy



Trichromacy



Original Color
FFBFD2



Protanomaly
E2C9D8



Deuteranomaly
EEC6D1

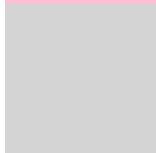


Tritanomaly
FFC0CF

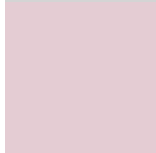
Monochromacy



Original Color
FFBFD2



Achromatopsia
D4D4D4



Achromatomaly
E4CCD3

CSS Examples

Text

The CSS property to change the color of the text to Hex FFbfd2 is called "color". The color property can be set on classes, ids or directly on the HTML element.

This example shows how text in the color #FFbfd2 looks like.

```
.text, #text, p{  
    color:#FFbfd2  
}
```

If you want to add a text shadow in that color use the text-shadow property, you can generate a text shadow directly with our [CSS Text Shadow Generator](#).

Here you see how black text with a 4 pixel #FFBFD2 colored shadow looks like.

```
.shadow{ text-shadow: 4px 4px 2px #FFBFD2
}
```

Border

The CSS property to change the border of an element to Hex FFBFD2 is called "border". The border property can be set on classes, ids or directly on the HTML element.

This example shows the color as border, it can be applied via the CSS property "border" or "border-color".

```
.border, #border, table{ border:4px solid
#FFBFD2 }
```

If only the border color should be changed use the property `border-color`.

```
.border{ border-color:#FFBFD2 }
```

If you want to add a box shadow in that color use:

Here you see how a box with a 4 pixel #FFBFD2 colored shadow looks like.

```
.boxshadow{ -moz-box-shadow:4px 4px 4px  
4px #FFBFD2; -webkit-box-shadow:4px 4px  
4px 4px #FFBFD2; box-shadow:4px 4px 4px  
4px #FFBFD2 }
```

Background

The CSS property to change the background color of an element to Hex FFBFD2 is called "background". The background property can be set on classes, ids or directly on the HTML element.

```
.background, #background, body{  
background:#FFBFD2 }
```

If only the background color should be changed can be used:

```
.background{ background-color:#FFBFD2 }
```

This example shows the color as background, it is applied via the CSS property "background".

To optimize and compress your CSS code, you can use our [online CSS compressor and optimizer](#) based on csstidy. If you want to create a linear or radial gradient as background or border, check our [CSS Gradient Generator](#).

Hey! You found this booklet interesting? Support Converting Colors with the new Membership Option!

The pro membership hides all ads, plus gives you double the colors in the color bucket, and more awesome pro features!

[Learn more, Memberships starting at \\$2.50/m!](#)

**Follow me
on Twitter!**

@ConvertingColor