

Converting Colors

Hex(FFBFD5)

Have a look what the booklet for
Hex(FFBFD5) contains.

Hex(FFBFD5)	3
<i>Conversions</i>	4
<i>Details</i>	6
<i>Harmonies</i>	11
<i>Previews</i>	23
<i>Color Blindness Simulation</i>	26
<i>CSS Examples</i>	29

Color

Hex(FFBFD5)

Conversions

Conversions Part 1

Format	Color
Hex	FFBFD5
RGB	255, 191, 213
RGB Percent	100%, 75%, 84%
CMY	0.0000, 0.2510, 0.1647
CMYK	0.00, 0.25, 0.16, 0.00
HSL	339°, 100%, 87%
HSV	339°, 25%, 100%
XYZ	71.8810, 63.3257, 71.3853
YIQ	212.6440, 31.0820, 20.4100

Conversions

Conversions Part 2

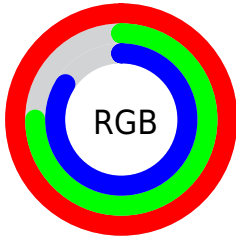
Format	Color
R _Y B	255, 191, 213
Decimal	16760789
CIE Lab	83.61, 26.17, -2.00
CIE LCh	84, 26.250, 355.635
Yxy	63.3257, 0.3479, 0.3065
Android (android.graphics.Color)	4294950869 (0xFFFFBFD5)
YUV	212.6440, 0.1755, 37.1462
Hunter-Lab	79.5774, 21.9757, 2.5178

Details

The Hex color **FFBFD5** is a light color, and the websafe version is hex **FFCCCC**. A complement of this color would be **BFFFE9**, and the grayscale version is **D5D5D5**.

A 20% lighter version of the original color is **FFF8FF**, and **C5899E** is the 20% darker color. If you saturate the color by 10%, you get **FFA6C4**, and if you desaturate by 10%, it is **FFD9E6**.

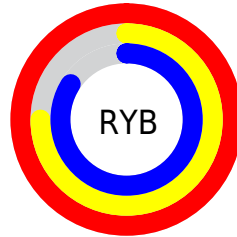
Distribution



Red (100%)

Green (75%)

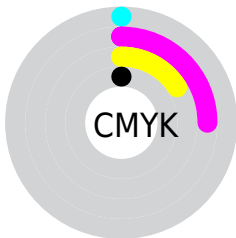
Blue (84%)



Red (100%)

Yellow (75%)

Blue (84%)

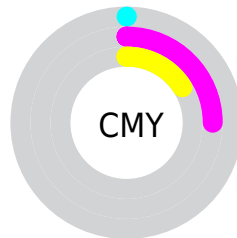


Cyan (0%)

Magenta (25%)

Yellow (16%)

Black (0%)



Cyan (0%)

Magenta (25%)

Yellow (16%)

Brightness & Saturation Gradients

These gradients show how the Hex color FFbfd5 changes by changing the brightness by 10 percent. The first figure shows a shift by +10% for each color and the second figure -10%.

Similar to the brightness gradients but the following saturation gradients show a change of the Hex color FFbfd5 by changing the saturation by 10% instead.

 #FFBFD5

#FFFFFF

 #FFF8FF

 #FFBFD5

 #E2A4B9

 #C5899E

 #AA6F84

 #8E566B

 #743E53

 #5A273C

 #421026

 #2B0012

 #000000

 #FFBFD5

 #FFBFD5

 #FFA6C4

 #FFD9E6

 #FF8CB4

 #FFF2F6

 #FF73A3

#FFFFFF

 #FF5992

 #FF4081

 #FF2671

 #FF0D60

 #FF0058

Harmonies

Analogous

The Analogous color harmony consists of three colors that are next to each other on the color wheel.



EDC3ED



FFBFD5



FFC0BC

Triad

The Triadic color harmony groups three colors that are evenly spaced from another and form a triangle on the color wheel.



FFBFD5



CCD5A4



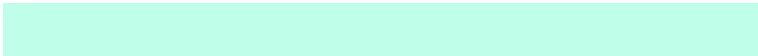
93DAF8

Complementary

The Complementary color scheme is a pair of colors which are on the opposite of each other on the color wheel.



FFBFD5



BFFFE9

Split Complementary

Split-complementary colors differ from the complementary color scheme. The scheme consists of three colors, the original color and two neighbors of the complement color.



8ADEE5



FFBFD5



B0DBB4

Square

The Square scheme is like the rectangle color scheme, but the four colors are evenly spaced on the color wheel.



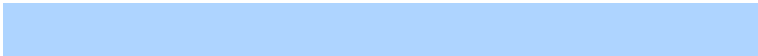
FFBFD5



E6CE9F



97DECC



AED4FF

Rectangle

The Rectangle color scheme consists of four colors that form a rectangle on the color wheel.



FFBFD5



FEC3AE



97DECC



8DDCF3

Sweetspot

The Sweet Spot groups the original color and five complimentary colors.



FFBFD5



FFEBF2



E9BFFF



807377



000000



808080

Same Dimension

The Same Dimension uses a secret algorithm to generate beautiful new colors.



FFBFD5



FFB3CD



FFC9BF



807377



BF0042



400016

Inverse Universe

The Inverse Universe completely reimagines the original color for something new.



FFBFD5



FFB3CD



BFF5FF



807377



BF0042



400016

Previews

White Background



This preview shows how the Hex color FFBFD5 looks on a white background.

Color Contrast Check

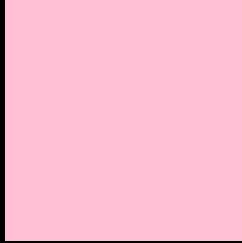
Large Text (above 18pt) WCAG AA × Fail

Any Text WCAG AA × Fail

Large Text (above 18pt) WCAG AAA × Fail

Any Text WCAG AAA × Fail

Black Background



This preview shows how the Hex color FFBFD5 looks on a black background.

Color Contrast Check

Large Text (above 18pt) WCAG AA ✓ Pass

Any Text WCAG AA ✓ Pass

Large Text (above 18pt) WCAG AAA ✓ Pass

Any Text WCAG AAA ✓ Pass

If you want to check with other color combinations, try the [Color Contrast Checker](#).

Hex FFBFD5 Background



This preview shows how black text looks on a background with the Hex color FFBFD5.

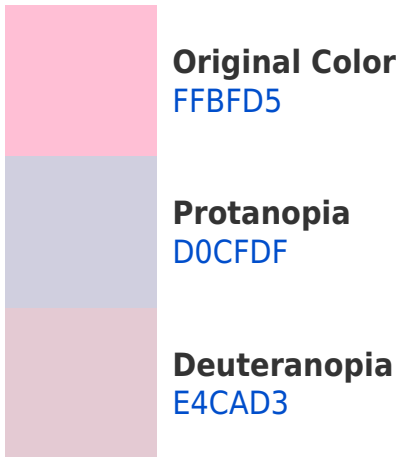


This preview shows how white text looks on a background with the Hex color FFBFD5.

Color Blindness Simulation

Color vision deficiency is a very complex topic, and I could not describe the different causes any better than Wikipedia does, so if you want to learn more, you should check out their [article about color blindness](#).

Dichromacy



Trichromacy



Original Color
FFBFD5



Protanomaly
E1C9DB



Deuteranomaly
EEC6D4

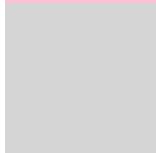


Tritanomaly
FEC0D1

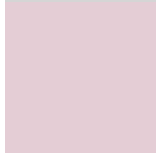
Monochromacy



Original Color
FFBFD5



Achromatopsia
D5D5D5



Achromatomaly
E4CDD5

CSS Examples

Text

The CSS property to change the color of the text to Hex FFbfd5 is called "color". The color property can be set on classes, ids or directly on the HTML element.

This example shows how text in the color #FFbfd5 looks like.

```
.text, #text, p{  
    color:#FFbfd5  
}
```

If you want to add a text shadow in that color use the text-shadow property, you can generate a text shadow directly with our [CSS Text Shadow Generator](#).

Here you see how black text with a 4 pixel #FFBFD5 colored shadow looks like.

```
.shadow{ text-shadow: 4px 4px 2px #FFBFD5
}
```

Border

The CSS property to change the border of an element to Hex FFBFD5 is called "border". The border property can be set on classes, ids or directly on the HTML element.

This example shows the color as border, it can be applied via the CSS property "border" or "border-color".

```
.border, #border, table{ border:4px solid
#FFBFD5 }
```

If only the border color should be changed use the property `border-color`.

```
.border{ border-color:#FFBFD5 }
```

If you want to add a box shadow in that color use:

Here you see how a box with a 4 pixel #FFBFD5 colored shadow looks like.

```
.boxshadow{ -moz-box-shadow:4px 4px 4px  
4px #FFBFD5; -webkit-box-shadow:4px 4px  
4px 4px #FFBFD5; box-shadow:4px 4px 4px  
4px #FFBFD5 }
```

Background

The CSS property to change the background color of an element to Hex FFBFD5 is called "background". The background property can be set on classes, ids or directly on the HTML element.

```
.background, #background, body{  
background:#FFBFD5 }
```

If only the background color should be changed can be used:

```
.background{ background-color:#FFBFD5 }
```

This example shows the color as background, it is applied via the CSS property "background".

To optimize and compress your CSS code, you can use our [online CSS compressor and optimizer](#) based on csstidy. If you want to create a linear or radial gradient as background or border, check our [CSS Gradient Generator](#).

Hey! You found this booklet interesting? Support Converting Colors with the new Membership Option!

The pro membership hides all ads, plus gives you double the colors in the color bucket, and more awesome pro features!

[Learn more, Memberships starting at \\$2.50/m!](#)

**Follow me
on Twitter!**

@ConvertingColor