

# Converting Colors

Hex(FFC0B3)

Have a look what the booklet for  
Hex(FFC0B3) contains.

<b>Hex(FFC0B3)</b> .....	3
<i><b>Conversions</b></i> .....	4
<i><b>Details</b></i> .....	6
<i><b>Harmonies</b></i> .....	11
<i><b>Previews</b></i> .....	23
<i><b>Color Blindness Simulation</b></i> .....	26
<i><b>CSS Examples</b></i> .....	29

# **Color**

**Hex(FFC0B3)**

# Conversions

## Conversions Part 1

<b>Format</b>	<b>Color</b>
Hex	<a href="#">FFC0B3</a>
RGB	<a href="#">255, 192, 179</a>
RGB Percent	<a href="#">100%, 75%, 70%</a>
CMY	<a href="#">0.0000, 0.2471, 0.2980</a>
CMYK	<a href="#">0.00, 0.25, 0.30, 0.00</a>
HSL	<a href="#">10°, 100%, 85%</a>
HSV	<a href="#">10°, 30%, 100%</a>
XYZ	<a href="#">68.2263, 62.2139, 51.0604</a>
YIQ	<a href="#">209.3550, 41.7210, 9.3130</a>

# Conversions

## Conversions Part 2

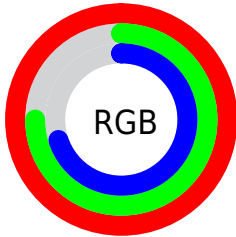
Format	Color
R <sub>Y</sub> B	255, 195, 179
Decimal	16761011
CIE Lab	83.03, 20.85, 15.35
CIE LCh	83, 25.890, 36.371
Yxy	62.2139, 0.3759, 0.3428
Android (android.graphics.Color)	4294951091 (0xFFFFC0B3)
YUV	209.3550, -14.9650, 40.0307
Hunter-Lab	78.8758, 16.3670, 16.8316

# Details

The Hex color **FFC0B3** is a light color, and the websafe version is hex **FFCCCC**. A complement of this color would be **B3F2FF**, and the grayscale version is **D1D1D1**.

A 20% lighter version of the original color is **FFF9EB**, and **C58A7E** is the 20% darker color. If you saturate the color by 10%, you get **FFAB99**, and if you desaturate by 10%, it is **FFD5CC**.

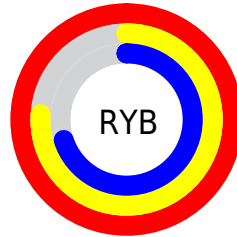
# Distribution



Red (100%)

Green (75%)

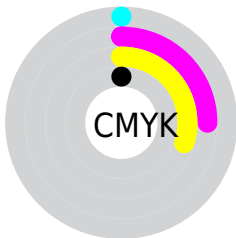
Blue (70%)



Red (100%)

Yellow (76%)

Blue (70%)

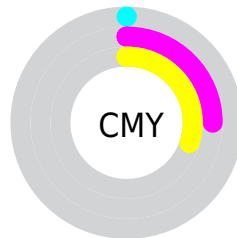


Cyan (0%)

Magenta (25%)

Yellow (30%)

Black (0%)



Cyan (0%)

Magenta (25%)

Yellow (30%)

# Brightness & Saturation Gradients

These gradients show how the Hex color FFC0B3 changes by changing the brightness by 10 percent. The first figure shows a shift by +10% for each color and the second figure -10%.

Similar to the brightness gradients but the following saturation gradients show a change of the Hex color FFC0B3 by changing the saturation by 10% instead.



 FFC0B3

 FFC0B3

FFFFFF

 E2A598

 FFF9EB

 C58A7E

 A97165

 8D584D

 724036

 582921

 3F130B

 280000

 000000

 FFC0B3

 FFC0B3

 FFAB99

 FFD5CC

 FF9680

 FFEAE6

 FF8166

FFFFFF

 FF6B4D

 FF5633

 FF411A

 FF2C00

# Harmonies

## Analogous

The Analogous color harmony consists of three colors that are next to each other on the color wheel.



FFBDCA



FFC0B3



F2C7A3

# Triad

The Triadic color harmony groups three colors that are evenly spaced from another and form a triangle on the color wheel.



FFC0B3



A5DBBB



B9CFFF

# Complementary

The Complementary color scheme is a pair of colors which are on the opposite of each other on the color wheel.



FFC0B3



B3F2FF

# Split Complementary

Split-complementary colors differ from the complementary color scheme. The scheme consists of three colors, the original color and two neighbors of the complement color.



9AD7FB



FFC0B3



90DDD3

# Square

The Square scheme is like the rectangle color scheme, but the four colors are evenly spaced on the color wheel.



FFC0B3



C1D6A7



8ADBEB



D9C7F6

# Rectangle

The Rectangle color scheme consists of four colors that form a rectangle on the color wheel.



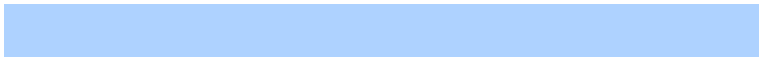
FFC0B3



E4CC9E



8ADBEB



AED2FF

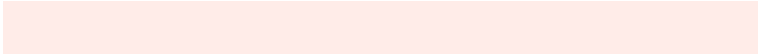


# Sweetspot

The Sweet Spot groups the original color and five complimentary colors.



FFC0B3



FFECE8



FFB3F2



807471



000000



808080



# Same Dimension

The Same Dimension uses a secret algorithm to generate beautiful new colors.



FFC0B3



FFB3A3



FFE6B3



807573



BF2100

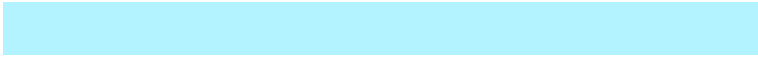


400B00

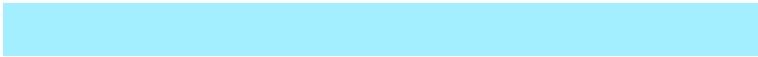


# Inverse Universe

The Inverse Universe completely reimagines the original color for something new.



B3F2FF



A3EFFF



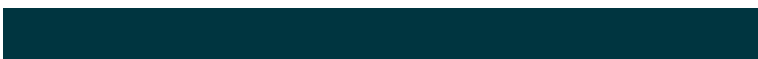
B3CCFF



737D80



009FBF



003540



# Previews

## White Background



This preview shows how the Hex color FFC0B3 looks on a white background.

## Color Contrast Check

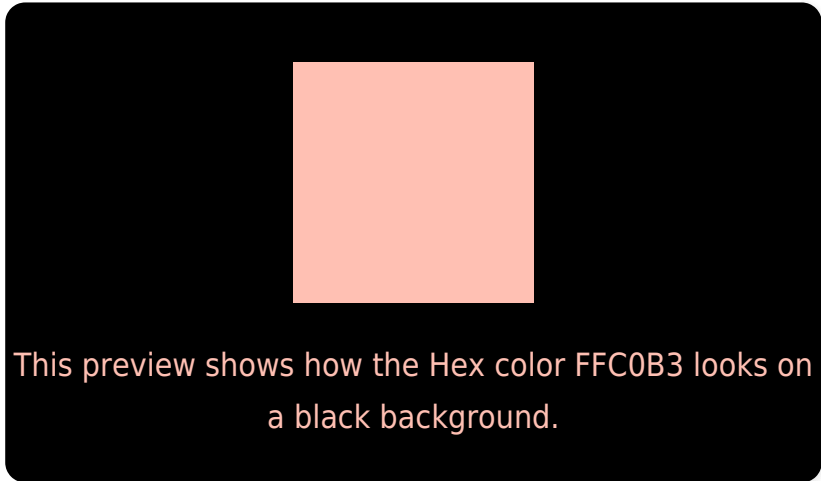
Large Text (above 18pt) WCAG AA × Fail

Any Text WCAG AA × Fail

Large Text (above 18pt) WCAG AAA × Fail

Any Text WCAG AAA × Fail

# Black Background



## Color Contrast Check

Large Text (above 18pt) WCAG AA ✓ Pass

Any Text WCAG AA ✓ Pass

Large Text (above 18pt) WCAG AAA ✓ Pass

Any Text WCAG AAA ✓ Pass

If you want to check with other color combinations, try the [Color Contrast Checker](#).



## Hex FFC0B3 Background



This preview shows how black text looks on a background with the Hex color FFC0B3.



This preview shows how white text looks on a background with the Hex color FFC0B3.

# Color Blindness Simulation

Color vision deficiency is a very complex topic, and I could not describe the different causes any better than Wikipedia does, so if you want to learn more, you should check out their [article about color blindness](#).

## Dichromacy



**Original Color**  
FFC0B3

**Protanopia**  
D8CEBA

**Deuteranopia**  
EEC7B2



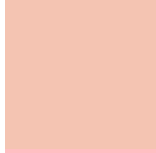
# Trichromacy



**Original Color**  
FFC0B3



**Protanomaly**  
E6C9B7



**Deuteranomaly**  
F4C4B2

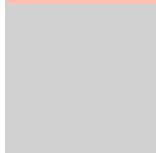


**Tritanomaly**  
FFBFC2

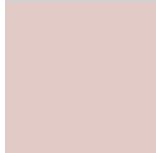
# Monochromacy



**Original Color**  
FFC0B3



**Achromatopsia**  
D1D1D1



**Achromatomaly**  
E2CBC6

# CSS Examples

## Text

The CSS property to change the color of the text to Hex FFC0B3 is called "color". The color property can be set on classes, ids or directly on the HTML element.

This example shows how text in the color #FFC0B3 looks like.

```
.text, #text, p{  
    color:#FFC0B3  
}
```

If you want to add a text shadow in that color use the text-shadow property, you can generate a text shadow directly with our [CSS Text Shadow Generator](#).

Here you see how black text with a 4 pixel #FFC0B3 colored shadow looks like.

```
.shadow{ text-shadow: 4px 4px 2px #FFC0B3
}
```

## Border

The CSS property to change the border of an element to Hex FFC0B3 is called "border". The border property can be set on classes, ids or directly on the HTML element.

This example shows the color as border, it can be applied via the CSS property "border" or "border-color".

```
.border, #border, table{ border:4px solid
#FFC0B3 }
```

If only the border color should be changed use the property `border-color`.

```
.border{ border-color:#FFC0B3 }
```

If you want to add a box shadow in that color use:

Here you see how a box with a 4 pixel #FFC0B3 colored shadow looks like.

```
.boxshadow{ -moz-box-shadow:4px 4px 4px  
4px #FFC0B3; -webkit-box-shadow:4px 4px  
4px 4px #FFC0B3; box-shadow:4px 4px 4px  
4px #FFC0B3 }
```

# Background

The CSS property to change the background color of an element to Hex FFC0B3 is called "background". The background property can be set on classes, ids or directly on the HTML element.

```
.background, #background, body{  
background:#FFC0B3 }
```

If only the background color should be changed can be used:

```
.background{ background-color:#FFC0B3 }
```

This example shows the color as background, it is applied via the CSS property "background".

To optimize and compress your CSS code, you can use our [online CSS compressor and optimizer](#) based on csstidy. If you want to create a linear or radial gradient as background or border, check our [CSS Gradient Generator](#).



Hey! You found this booklet interesting? Support Converting Colors with the new Membership Option!

The pro membership hides all ads, plus gives you double the colors in the color bucket, and more awesome pro features!

**[Learn more, Memberships starting at \\$2.50/m!](#)**

**Follow me  
on Twitter!**

@ConvertingColor