

Converting Colors

Hex(FFC1B8)

Have a look what the booklet for
Hex(FFC1B8) contains.

Hex(FFC1B8)	3
<i>Conversions</i>	4
<i>Details</i>	6
<i>Harmonies</i>	11
<i>Previews</i>	23
<i>Color Blindness Simulation</i>	26
<i>CSS Examples</i>	29

Color

Hex(FFC1B8)

Conversions

Conversions Part 1

Format	Color
Hex	FFC1B8
RGB	255, 193, 184
RGB Percent	100%, 76%, 72%
CMY	0.0000, 0.2431, 0.2784
CMYK	0.00, 0.24, 0.28, 0.00
HSL	8°, 100%, 86%
HSV	8°, 28%, 100%
XYZ	68.9617, 62.8606, 53.8460
YIQ	210.5120, 39.8410, 10.3450

Conversions

Conversions Part 2

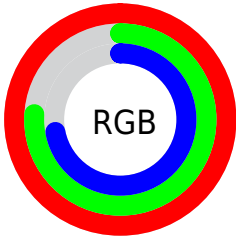
Format	Color
R _Y B	255, 194, 184
Decimal	16761272
CIE Lab	83.37, 20.98, 13.17
CIE LCh	83, 24.765, 32.118
Yxy	62.8606, 0.3714, 0.3386
Android (android.graphics.Color)	4294951352 (0xFFFFC1B8)
YUV	210.5120, -13.0704, 39.0160
Hunter-Lab	79.2847, 16.5108, 15.2326

Details

The Hex color **FFC1B8** is a light color, and the websafe version is hex **FFCCCC**. A complement of this color would be **B8F6FF**, and the grayscale version is **D3D3D3**.

A 20% lighter version of the original color is **FFFAF0**, and **C58B83** is the 20% darker color. If you saturate the color by 10%, you get **FFAB9F**, and if you desaturate by 10%, it is **FFD7D2**.

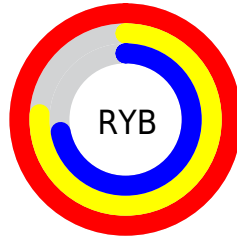
Distribution



Red (100%)

Green (76%)

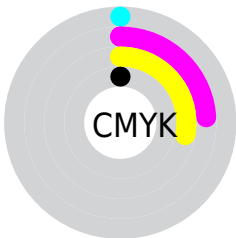
Blue (72%)



Red (100%)

Yellow (76%)

Blue (72%)

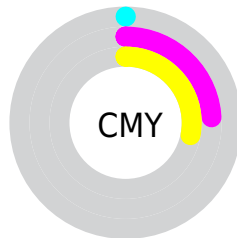


Cyan (0%)

Magenta (24%)

Yellow (28%)

Black (0%)



Cyan (0%)

Magenta (24%)

Yellow (28%)

Brightness & Saturation Gradients

These gradients show how the Hex color FFC1B8 changes by changing the brightness by 10 percent. The first figure shows a shift by +10% for each color and the second figure -10%.

Similar to the brightness gradients but the following saturation gradients show a change of the Hex color FFC1B8 by changing the saturation by 10% instead.

 FFC1B8

 FFC1B8

FFFFFF

 E2A69D

 FFFAF0

 C58B83

 A9716A

 8E5952

 73413B

 592A25

 401410

 290000

 000000

 FFC1B8

 FFC1B8

 FFAB9F

 FFD7D2

 FF9485

 FFEEEE

 FF7E6B

FFFFFF

 FF6852

 FF5239

 FF3B1F

 FF2506

 FF2000

Harmonies

Analogous

The Analogous color harmony consists of three colors that are next to each other on the color wheel.



FEBFCF



FFC1B8



F4C7A7

Triad

The Triadic color harmony groups three colors that are evenly spaced from another and form a triangle on the color wheel.



FFC1B8



ACDBB9



B7D1FE

Complementary

The Complementary color scheme is a pair of colors which are on the opposite of each other on the color wheel.



FFC1B8



B8F6FF

Split Complementary

Split-complementary colors differ from the complementary color scheme. The scheme consists of three colors, the original color and two neighbors of the complement color.



9BD8F8



FFC1B8



96DDD1

Square

The Square scheme is like the rectangle color scheme, but the four colors are evenly spaced on the color wheel.



FFC1B8



C6D6A8



8FDCE8



D6C9F7

Rectangle

The Rectangle color scheme consists of four colors that form a rectangle on the color wheel.



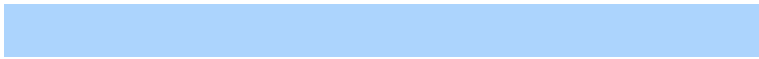
FFC1B8



E7CCA2



8FDCE8



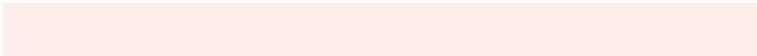
ACD4FD

Sweetspot

The Sweet Spot groups the original color and five complimentary colors.



FFC1B8



FFEDEB



FFB8F7



807473



000000



808080

Same Dimension

The Same Dimension uses a secret algorithm to generate beautiful new colors.



FFC1B8



FFB6AB



FFE4B8



807473



BF1800



400800

Inverse Universe

The Inverse Universe completely reimagines the original color for something new.



B8F6FF



ABF4FF



B8D3FF



737E80



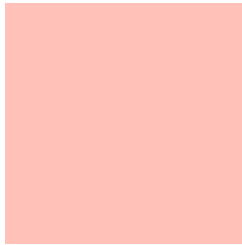
00A7BF



003840

Previews

White Background



This preview shows how the Hex color FFC1B8 looks on a white background.

Color Contrast Check

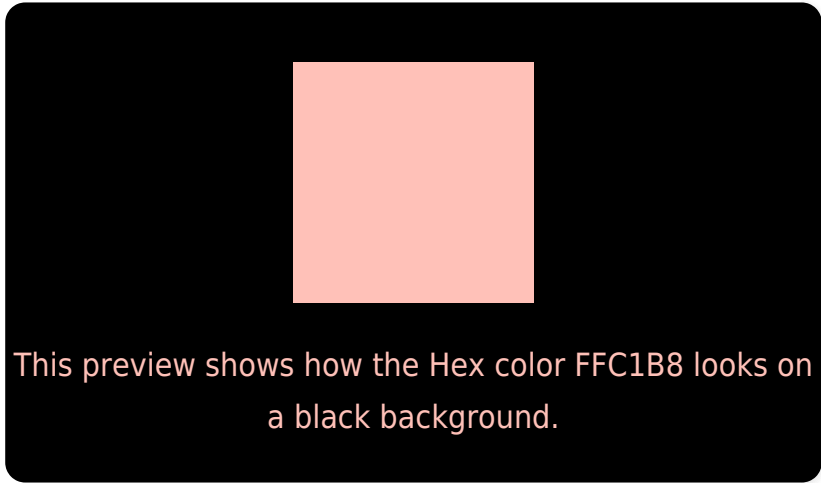
Large Text (above 18pt) WCAG AA × Fail

Any Text WCAG AA × Fail

Large Text (above 18pt) WCAG AAA × Fail

Any Text WCAG AAA × Fail

Black Background



Color Contrast Check

Large Text (above 18pt) WCAG AA ✓ Pass

Any Text WCAG AA ✓ Pass

Large Text (above 18pt) WCAG AAA ✓ Pass

Any Text WCAG AAA ✓ Pass

If you want to check with other color combinations, try the [Color Contrast Checker](#).

Hex FFC1B8 Background



This preview shows how black text looks on a background with the Hex color FFC1B8.

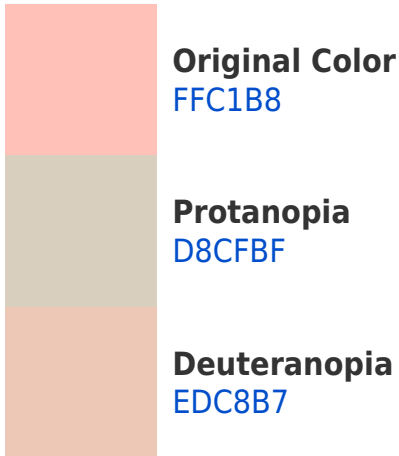


This preview shows how white text looks on a background with the Hex color FFC1B8.

Color Blindness Simulation

Color vision deficiency is a very complex topic, and I could not describe the different causes any better than Wikipedia does, so if you want to learn more, you should check out their [article about color blindness](#).

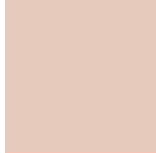
Dichromacy



Trichromacy



Original Color
FFC1B8



Protanomaly
E6CABC



Deuteranomaly
F4C5B7

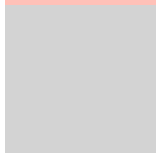


Tritanomaly
FFC0C5

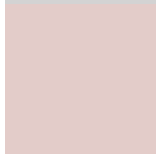
Monochromacy



Original Color
FFC1B8



Achromatopsia
D3D3D3



Achromatomaly
E3CCC9

CSS Examples

Text

The CSS property to change the color of the text to Hex FFC1B8 is called "color". The color property can be set on classes, ids or directly on the HTML element.

This example shows how text in the color #FFC1B8 looks like.

```
.text, #text, p{  
    color:#FFC1B8  
}
```

If you want to add a text shadow in that color use the text-shadow property, you can generate a text shadow directly with our [CSS Text Shadow Generator](#).

Here you see how black text with a 4 pixel #FFC1B8 colored shadow looks like.

```
.shadow{ text-shadow: 4px 4px 2px #FFC1B8  
}
```

Border

The CSS property to change the border of an element to Hex FFC1B8 is called "border". The border property can be set on classes, ids or directly on the HTML element.

This example shows the color as border, it can be applied via the CSS property "border" or "border-color".

```
.border, #border, table{ border:4px solid  
#FFC1B8 }
```

If only the border color should be changed use the property `border-color`.

```
.border{ border-color:#FFC1B8 }
```

If you want to add a box shadow in that color use:

Here you see how a box with a 4 pixel #FFC1B8 colored shadow looks like.

```
.boxshadow{ -moz-box-shadow:4px 4px 4px  
4px #FFC1B8; -webkit-box-shadow:4px 4px  
4px 4px #FFC1B8; box-shadow:4px 4px 4px  
4px #FFC1B8 }
```

Background

The CSS property to change the background color of an element to Hex FFC1B8 is called "background". The background property can be set on classes, ids or directly on the HTML element.

```
.background, #background, body{  
background:#FFC1B8 }
```

If only the background color should be changed can be used:

```
.background{ background-color:#FFC1B8 }
```

This example shows the color as background, it is applied via the CSS property "background".

To optimize and compress your CSS code, you can use our [online CSS compressor and optimizer](#) based on csstidy. If you want to create a linear or radial gradient as background or border, check our [CSS Gradient Generator](#).

Hey! You found this booklet interesting? Support Converting Colors with the new Membership Option!

The pro membership hides all ads, plus gives you double the colors in the color bucket, and more awesome pro features!

[Learn more, Memberships starting at \\$2.50/m!](#)

**Follow me
on Twitter!**

@ConvertingColor