

Converting Colors

Hex(FFC1B9)

Have a look what the booklet for
Hex(FFC1B9) contains.

Hex(FFC1B9)	3
<i>Conversions</i>	4
<i>Details</i>	6
<i>Harmonies</i>	11
<i>Previews</i>	23
<i>Color Blindness Simulation</i>	26
<i>CSS Examples</i>	29

Color

Hex(FFC1B9)

Conversions

Conversions Part 1

Format	Color
Hex	FFC1B9
RGB	255, 193, 185
RGB Percent	100%, 76%, 73%
CMY	0.0000, 0.2431, 0.2745
CMYK	0.00, 0.24, 0.27, 0.00
HSL	7°, 100%, 86%
HSV	7°, 27%, 100%
XYZ	69.0669, 62.9027, 54.4002
YIQ	210.6260, 39.5200, 10.6560

Conversions

Conversions Part 2

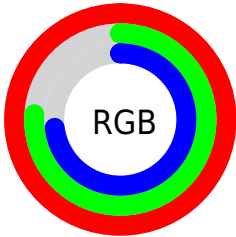
Format	Color
R _Y B	255, 194, 185
Decimal	16761273
CIE Lab	83.39, 21.11, 12.66
CIE LCh	83, 24.616, 30.963
Yxy	62.9027, 0.3706, 0.3375
Android (android.graphics.Color)	4294951353 (0xFFFFC1B9)
YUV	210.6260, -12.6336, 38.9160
Hunter-Lab	79.3112, 16.6492, 14.8504

Details

The Hex color **FFC1B9** is a light color, and the websafe version is hex **FFCCCC**. A complement of this color would be **B9F7FF**, and the grayscale version is **D3D3D3**.

A 20% lighter version of the original color is **FFFAF1**, and **C58B84** is the 20% darker color. If you saturate the color by 10%, you get **FFAAA0**, and if you desaturate by 10%, it is **FFD8D3**.

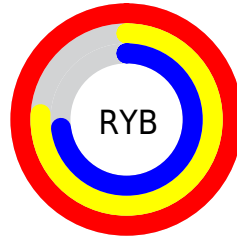
Distribution



Red (100%)

Green (76%)

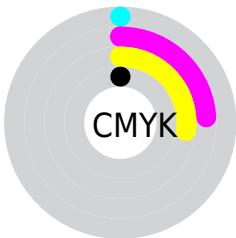
Blue (73%)



Red (100%)

Yellow (76%)

Blue (73%)

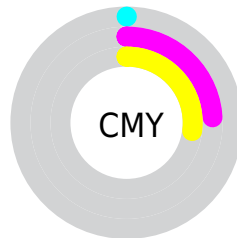


Cyan (0%)

Magenta (24%)

Yellow (27%)

Black (0%)



Cyan (0%)

Magenta (24%)

Yellow (27%)

Brightness & Saturation Gradients

These gradients show how the Hex color FFC1B9 changes by changing the brightness by 10 percent. The first figure shows a shift by +10% for each color and the second figure -10%.

Similar to the brightness gradients but the following saturation gradients show a change of the Hex color FFC1B9 by changing the saturation by 10% instead.

 FFC1B9

 FFC1B9

FFFFFF

 E2A69E

 FFFAF1

 C58B84

 A9716B

 8E5953

 73413C

 592A26

 401411

 290000

 000000

 FFC1B9

 FFC1B9

 FFAAA0

 FFD8D3

 FF9486

 FFEDEC

 FF7D6C

FFFFFF

 FF6753

 FF5039

 FF3920

 FF2307

 FF1D00

Harmonies

Analogous

The Analogous color harmony consists of three colors that are next to each other on the color wheel.



FDBFD0



FFC1B9



F5C7A8

Triad

The Triadic color harmony groups three colors that are evenly spaced from another and form a triangle on the color wheel.



FFC1B9



ADD8E6



B6D2FE

Complementary

The Complementary color scheme is a pair of colors which are on the opposite of each other on the color wheel.



FFC1B9



B9F7FF

Split Complementary

Split-complementary colors differ from the complementary color scheme. The scheme consists of three colors, the original color and two neighbors of the complement color.



9BD8F8



FFC1B9



97DDD0

Square

The Square scheme is like the rectangle color scheme, but the four colors are evenly spaced on the color wheel.



FFC1B9



C7D6A8



8FDCE7



D5CAF7

Rectangle

The Rectangle color scheme consists of four colors that form a rectangle on the color wheel.



FFC1B9



E8CCA2



8FDCE7



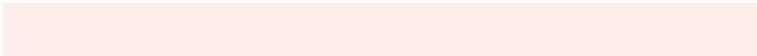
ACD4FD

Sweetspot

The Sweet Spot groups the original color and five complimentary colors.



FFC1B9



FFEDEB



FFB9F8



807473



000000



808080

Same Dimension

The Same Dimension uses a secret algorithm to generate beautiful new colors.



FFC1B9



FFB4AB



FFE3B9



807473



BF1600



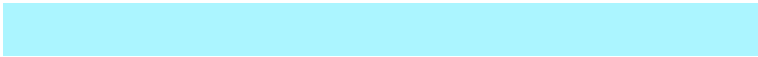
400700

Inverse Universe

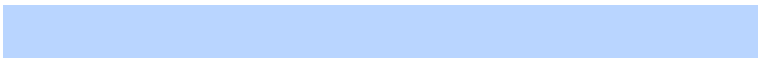
The Inverse Universe completely reimagines the original color for something new.



B9F7FF



ABF5FF



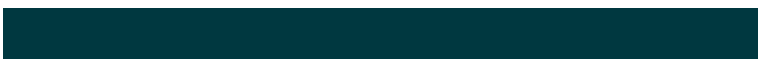
B9D5FF



737E80



00A9BF



003840

Previews

White Background



This preview shows how the Hex color FFC1B9 looks on a white background.

Color Contrast Check

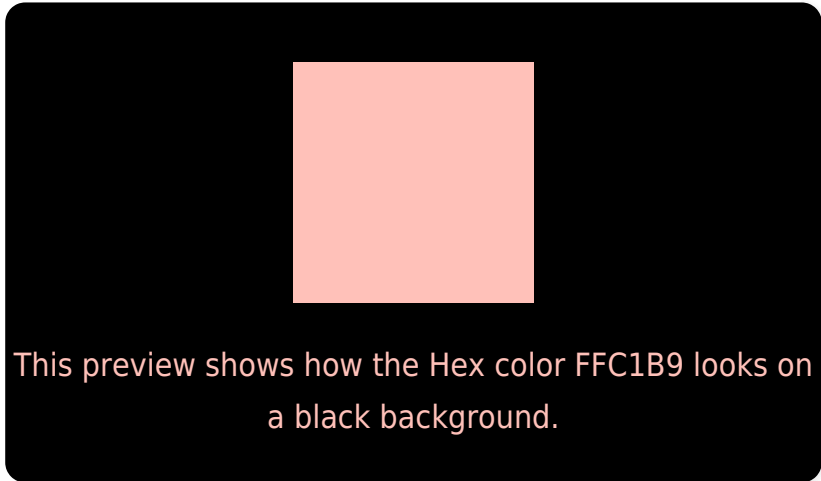
Large Text (above 18pt) WCAG AA × Fail

Any Text WCAG AA × Fail

Large Text (above 18pt) WCAG AAA × Fail

Any Text WCAG AAA × Fail

Black Background



Color Contrast Check

Large Text (above 18pt) WCAG AA ✓ Pass

Any Text WCAG AA ✓ Pass

Large Text (above 18pt) WCAG AAA ✓ Pass

Any Text WCAG AAA ✓ Pass

If you want to check with other color combinations, try the [Color Contrast Checker](#).

Hex FFC1B9 Background



This preview shows how black text looks on a background with the Hex color FFC1B9.

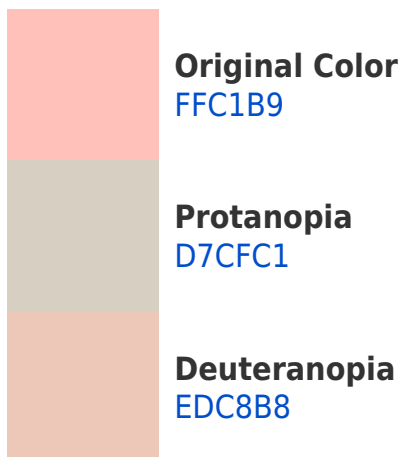


This preview shows how white text looks on a background with the Hex color FFC1B9.

Color Blindness Simulation

Color vision deficiency is a very complex topic, and I could not describe the different causes any better than Wikipedia does, so if you want to learn more, you should check out their [article about color blindness](#).

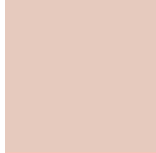
Dichromacy



Trichromacy



Original Color
FFC1B9



Protanomaly
E6CABE



Deuteranomaly
F4C5B8

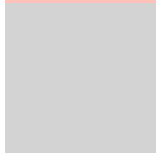


Tritanomaly
FFC0C6

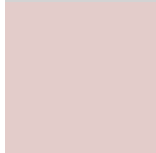
Monochromacy



Original Color
FFC1B9



Achromatopsia
D3D3D3



Achromatomaly
E3CCCA

CSS Examples

Text

The CSS property to change the color of the text to Hex FFC1B9 is called "color". The color property can be set on classes, ids or directly on the HTML element.

This example shows how text in the color #FFC1B9 looks like.

```
.text, #text, p{  
    color:#FFC1B9  
}
```

If you want to add a text shadow in that color use the text-shadow property, you can generate a text shadow directly with our [CSS Text Shadow Generator](#).

Here you see how black text with a 4 pixel #FFC1B9 colored shadow looks like.

```
.shadow{ text-shadow: 4px 4px 2px #FFC1B9
}
```

Border

The CSS property to change the border of an element to Hex FFC1B9 is called "border". The border property can be set on classes, ids or directly on the HTML element.

This example shows the color as border, it can be applied via the CSS property "border" or "border-color".

```
.border, #border, table{ border:4px solid
#FFC1B9 }
```

If only the border color should be changed use the property `border-color`.

```
.border{ border-color:#FFC1B9 }
```

If you want to add a box shadow in that color use:

Here you see how a box with a 4 pixel #FFC1B9 colored shadow looks like.

```
.boxshadow{ -moz-box-shadow:4px 4px 4px  
4px #FFC1B9; -webkit-box-shadow:4px 4px  
4px 4px #FFC1B9; box-shadow:4px 4px 4px  
4px #FFC1B9 }
```

Background

The CSS property to change the background color of an element to Hex FFC1B9 is called "background". The background property can be set on classes, ids or directly on the HTML element.

```
.background, #background, body{  
background:#FFC1B9 }
```

If only the background color should be changed can be used:

```
.background{ background-color:#FFC1B9 }
```

This example shows the color as background, it is applied via the CSS property "background".

To optimize and compress your CSS code, you can use our [online CSS compressor and optimizer](#) based on csstidy. If you want to create a linear or radial gradient as background or border, check our [CSS Gradient Generator](#).

Hey! You found this booklet interesting? Support Converting Colors with the new Membership Option!

The pro membership hides all ads, plus gives you double the colors in the color bucket, and more awesome pro features!

[Learn more, Memberships starting at \\$2.50/m!](#)

**Follow me
on Twitter!**

@ConvertingColor