

Converting Colors

Hex(FFC1C3)

Have a look what the booklet for
Hex(FFC1C3) contains.

Hex(FFC1C3)	3
<i>Conversions</i>	4
<i>Details</i>	6
<i>Harmonies</i>	11
<i>Previews</i>	23
<i>Color Blindness Simulation</i>	26
<i>CSS Examples</i>	29

Color

Hex(FFC1C3)

Conversions

Conversions Part 1

Format	Color
Hex	FFC1C3
RGB	255, 193, 195
RGB Percent	100%, 76%, 76%
CMY	0.0000, 0.2431, 0.2353
CMYK	0.00, 0.24, 0.24, 0.00
HSL	358°, 100%, 88%
HSV	358°, 24%, 100%
XYZ	70.1603, 63.3401, 60.1578
YIQ	211.7660, 36.3100, 13.7660

Conversions

Conversions Part 2

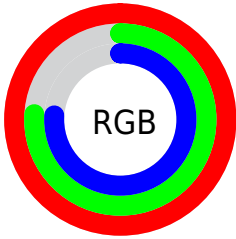
Format	Color
R _Y B	255, 193, 195
Decimal	16761283
CIE Lab	83.62, 22.48, 7.65
CIE LCh	84, 23.743, 18.792
Yxy	63.3401, 0.3623, 0.3271
Android (android.graphics.Color)	4294951363 (0xFFFFC1C3)
YUV	211.7660, -8.2656, 37.9162
Hunter-Lab	79.5865, 18.0822, 10.8944

Details

The Hex color **FFC1C3** is a light color, and the websafe version is hex **FFCCCC**. A complement of this color would be **C1FFFD**, and the grayscale version is **D4D4D4**.

A 20% lighter version of the original color is **FFFAFC**, and **C58B8D** is the 20% darker color. If you saturate the color by 10%, you get **FFA8AA**, and if you desaturate by 10%, it is **FFDBDC**.

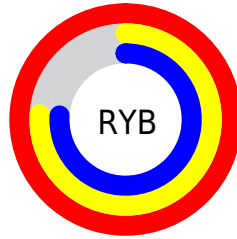
Distribution



Red (100%)

Green (76%)

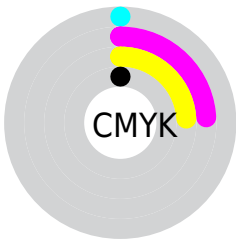
Blue (76%)



Red (100%)

Yellow (76%)

Blue (76%)

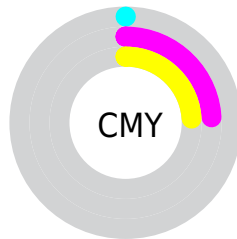


Cyan (0%)

Magenta (24%)

Yellow (24%)

Black (0%)



Cyan (0%)

Magenta (24%)

Yellow (24%)

Brightness & Saturation Gradients

These gradients show how the Hex color FFC1C3 changes by changing the brightness by 10 percent. The first figure shows a shift by +10% for each color and the second figure -10%.

Similar to the brightness gradients but the following saturation gradients show a change of the Hex color FFC1C3 by changing the saturation by 10% instead.

 FFC1C3

FFFFFF

 FFFAFC

 FFC1C3

 E2A6A8

 C58B8D

 A97174

 8E595B

 734144

 5A2A2E

 411419

 2B0000

 000000

 FFC1C3

 FFC1C3

 FFA8AA

 FFDBDC

 FF8E92

 FFF4F4

 FF7579

FFFFFF

 FF5B60

 FF4248

 FF282F

 FF0F16

 FF0008

Harmonies

Analogous

The Analogous color harmony consists of three colors that are next to each other on the color wheel.



F8C1DA



FFC1C3



F9C5B0

Triad

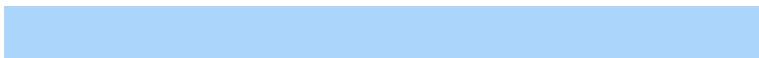
The Triadic color harmony groups three colors that are evenly spaced from another and form a triangle on the color wheel.



FFC1C3



B9D9B2



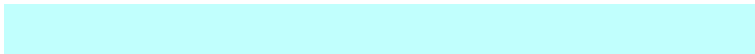
ACD5FC

Complementary

The Complementary color scheme is a pair of colors which are on the opposite of each other on the color wheel.



FFC1C3



C1FFFD

Split Complementary

Split-complementary colors differ from the complementary color scheme. The scheme consists of three colors, the original color and two neighbors of the complement color.



97DBF1



FFC1C3



A2DDC7

Square

The Square scheme is like the rectangle color scheme, but the four colors are evenly spaced on the color wheel.



FFC1C3



D3D3A6



94DDDE



C9CEFB

Rectangle

The Rectangle color scheme consists of four colors that form a rectangle on the color wheel.



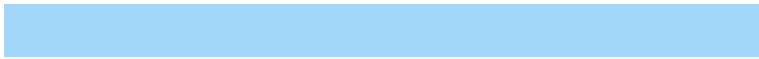
FFC1C3



F0CAA7



94DDDE



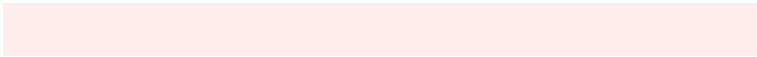
A3D7F9

Sweetspot

The Sweet Spot groups the original color and five complimentary colors.



FFC1C3



FFEDEE



FDC1FF



807576



000000



808080

Same Dimension

The Same Dimension uses a secret algorithm to generate beautiful new colors.



FFC1C3



FFB5B7



FFDEC1



807373



BF0006



400002

Inverse Universe

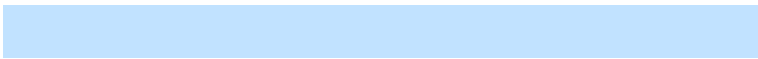
The Inverse Universe completely reimagines the original color for something new.



FFC1C3



FFB5B7



C1E2FF



807373



BF0006



400002

Previews

White Background



This preview shows how the Hex color FFC1C3 looks on a white background.

Color Contrast Check

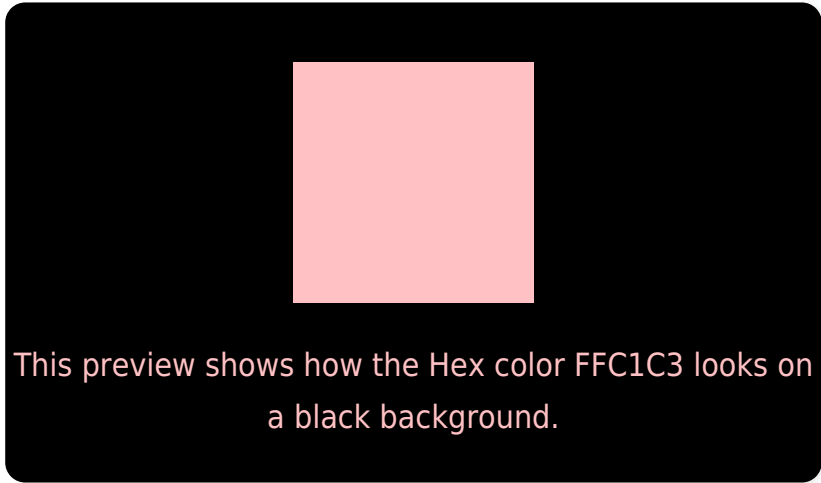
Large Text (above 18pt) WCAG AA × Fail

Any Text WCAG AA × Fail

Large Text (above 18pt) WCAG AAA × Fail

Any Text WCAG AAA × Fail

Black Background



Color Contrast Check

Large Text (above 18pt) WCAG AA ✓ Pass

Any Text WCAG AA ✓ Pass

Large Text (above 18pt) WCAG AAA ✓ Pass

Any Text WCAG AAA ✓ Pass

If you want to check with other color combinations, try the [Color Contrast Checker](#).

Hex FFC1C3 Background



This preview shows how black text looks on a background with the Hex color FFC1C3.

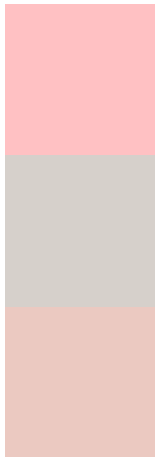


This preview shows how white text looks on a background with the Hex color FFC1C3.

Color Blindness Simulation

Color vision deficiency is a very complex topic, and I could not describe the different causes any better than Wikipedia does, so if you want to learn more, you should check out their [article about color blindness](#).

Dichromacy



Original Color
FFC1C3

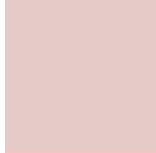
Protanopia
D6D0CB

Deuteranopia
EBC9C1

Trichromacy



Original Color
FFC1C3



Protanomaly
E5CBC8



Deuteranomaly
F2C6C2

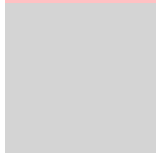


Tritanomaly
FFC0CA

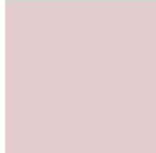
Monochromacy



Original Color
FFC1C3



Achromatopsia
D4D4D4



Achromatomaly
E4CDCE

CSS Examples

Text

The CSS property to change the color of the text to Hex FFC1C3 is called "color". The color property can be set on classes, ids or directly on the HTML element.

This example shows how text in the color #FFC1C3 looks like.

```
.text, #text, p{  
  color:#FFC1C3  
}
```

If you want to add a text shadow in that color use the text-shadow property, you can generate a text shadow directly with our [CSS Text Shadow Generator](#).

Here you see how black text with a 4 pixel #FFC1C3 colored shadow looks like.

```
.shadow{ text-shadow: 4px 4px 2px #FFC1C3
}
```

Border

The CSS property to change the border of an element to Hex FFC1C3 is called "border". The border property can be set on classes, ids or directly on the HTML element.

This example shows the color as border, it can be applied via the CSS property "border" or "border-color".

```
.border, #border, table{ border:4px solid
#FFC1C3 }
```

If only the border color should be changed use the property `border-color`.

```
.border{ border-color:#FFC1C3 }
```

If you want to add a box shadow in that color use:

Here you see how a box with a 4 pixel #FFC1C3 colored shadow looks like.

```
.boxshadow{ -moz-box-shadow:4px 4px 4px  
4px #FFC1C3; -webkit-box-shadow:4px 4px  
4px 4px #FFC1C3; box-shadow:4px 4px 4px  
4px #FFC1C3 }
```

Background

The CSS property to change the background color of an element to Hex FFC1C3 is called "background". The background property can be set on classes, ids or directly on the HTML element.

```
.background, #background, body{  
background:#FFC1C3 }
```

If only the background color should be changed can be used:

```
.background{ background-color:#FFC1C3 }
```

This example shows the color as background, it is applied via the CSS property "background".

To optimize and compress your CSS code, you can use our [online CSS compressor and optimizer](#) based on csstidy. If you want to create a linear or radial gradient as background or border, check our [CSS Gradient Generator](#).

Hey! You found this booklet interesting? Support Converting Colors with the new Membership Option!

The pro membership hides all ads, plus gives you double the colors in the color bucket, and more awesome pro features!

[Learn more, Memberships starting at \\$2.50/m!](#)

**Follow me
on Twitter!**

@ConvertingColor