

Converting Colors

Hex(FFC1D1)

Have a look what the booklet for
Hex(FFC1D1) contains.

Hex(FFC1D1)	3
<i>Conversions</i>	4
<i>Details</i>	6
<i>Harmonies</i>	11
<i>Previews</i>	23
<i>Color Blindness Simulation</i>	26
<i>CSS Examples</i>	29

Color

Hex(FFC1D1)

Conversions

Conversions Part 1

Format	Color
Hex	FFC1D1
RGB	255, 193, 209
RGB Percent	100%, 76%, 82%
CMY	0.0000, 0.2431, 0.1804
CMYK	0.00, 0.24, 0.18, 0.00
HSL	345°, 100%, 88%
HSV	345°, 24%, 100%
XYZ	71.8186, 64.0034, 68.8902
YIQ	213.3620, 31.8160, 18.1200

Conversions

Conversions Part 2

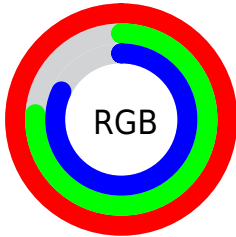
Format	Color
R _Y B	255, 193, 209
Decimal	16761297
CIE Lab	83.97, 24.52, 0.66
CIE LCh	84, 24.525, 1.544
Yxy	64.0034, 0.3508, 0.3127
Android (android.graphics.Color)	4294951377 (0xFFFFC1D1)
YUV	213.3620, -2.1505, 36.5165
Hunter-Lab	80.0021, 20.2373, 4.9465

Details

The Hex color **FFC1D1** is a light color, and the websafe version is hex **FFCCCC**. A complement of this color would be **C1FFEF**, and the grayscale version is **D5D5D5**.

A 20% lighter version of the original color is **FFFAFF**, and **C58B9B** is the 20% darker color. If you saturate the color by 10%, you get **FFA8BE**, and if you desaturate by 10%, it is **FFDBE4**.

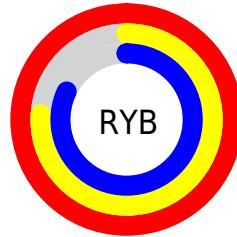
Distribution



Red (100%)

Green (76%)

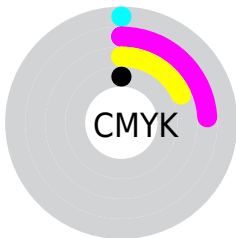
Blue (82%)



Red (100%)

Yellow (76%)

Blue (82%)

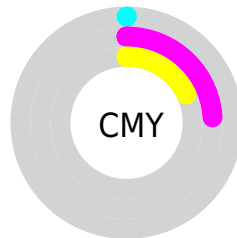


Cyan (0%)

Magenta (24%)

Yellow (18%)

Black (0%)



Cyan (0%)

Magenta (24%)

Yellow (18%)

Brightness & Saturation Gradients

These gradients show how the Hex color FFC1D1 changes by changing the brightness by 10 percent. The first figure shows a shift by +10% for each color and the second figure -10%.

Similar to the brightness gradients but the following saturation gradients show a change of the Hex color FFC1D1 by changing the saturation by 10% instead.

 FFC1D1

 FFC1D1

FFFFFF

 E2A6B5

 FFFAFF

 C58B9B

 AA7181

 8E5868

 744050

 5A2939

 421323

 2B000E

 000000

 FFC1D1

 FFC1D1

 FFA8BE

 FFD8E4

 FF8EAB

 FFF4F7

 FF7598

FFFFFF

 FF5B85

 FF4272

 FF285F

 FF0F4D

 FF0042

Harmonies

Analogous

The Analogous color harmony consists of three colors that are next to each other on the color wheel.



F0C4E8



FFC1D1



FFC3BA

Triad

The Triadic color harmony groups three colors that are evenly spaced from another and form a triangle on the color wheel.



FFC1D1



C9D7AA



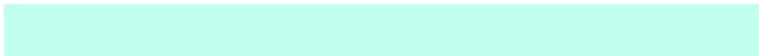
9DDAF9

Complementary

The Complementary color scheme is a pair of colors which are on the opposite of each other on the color wheel.



FFC1D1



C1FFEF

Split Complementary

Split-complementary colors differ from the complementary color scheme. The scheme consists of three colors, the original color and two neighbors of the complement color.



91DEE9



FFC1D1



AEDCBB

Square

The Square scheme is like the rectangle color scheme, but the four colors are evenly spaced on the color wheel.



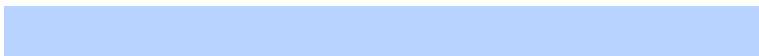
FFC1D1



E2D0A3



99DFD2



B8D3FF

Rectangle

The Rectangle color scheme consists of four colors that form a rectangle on the color wheel.



FFC1D1



FBC6AE



99DFD2



97DBF5

Sweetspot

The Sweet Spot groups the original color and five complimentary colors.



FFC1D1



FFEDF2



EEC1FF



807578



000000



808080

Same Dimension

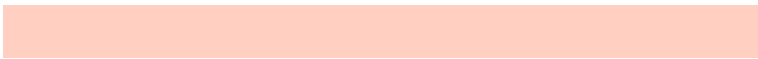
The Same Dimension uses a secret algorithm to generate beautiful new colors.



FFC1D1



FFB5C8



FFCFC1



807376



BF0031



400010

Inverse Universe

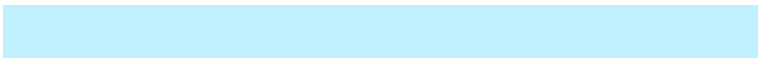
The Inverse Universe completely reimagines the original color for something new.



FFC1D1



FFB5C8



C1F1FF



807376



BF0031



400010

Previews

White Background



This preview shows how the Hex color FFC1D1 looks on a white background.

Color Contrast Check

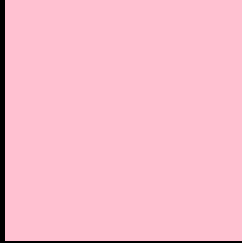
Large Text (above 18pt) WCAG AA × Fail

Any Text WCAG AA × Fail

Large Text (above 18pt) WCAG AAA × Fail

Any Text WCAG AAA × Fail

Black Background



This preview shows how the Hex color FFC1D1 looks on a black background.

Color Contrast Check

Large Text (above 18pt) WCAG AA ✓ Pass

Any Text WCAG AA ✓ Pass

Large Text (above 18pt) WCAG AAA ✓ Pass

Any Text WCAG AAA ✓ Pass

If you want to check with other color combinations, try the [Color Contrast Checker](#).

Hex FFC1D1 Background



This preview shows how black text looks on a background with the Hex color FFC1D1.

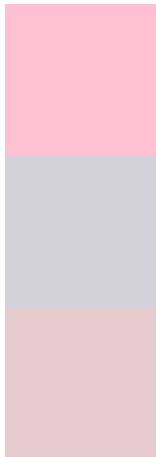


This preview shows how white text looks on a background with the Hex color FFC1D1.

Color Blindness Simulation

Color vision deficiency is a very complex topic, and I could not describe the different causes any better than Wikipedia does, so if you want to learn more, you should check out their [article about color blindness](#).

Dichromacy



Original Color
FFC1D1

Protanopia
D3D1DA

Deuteranopia
E7CBCF

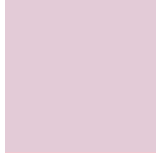


Tritanopia
FFC1D0

Trichromacy



Original Color
FFC1D1



Protanomaly
E3CBD7



Deuteranomaly
F0C7D0

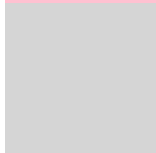


Tritanomaly
FFC1D0

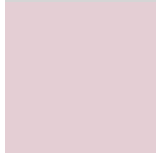
Monochromacy



Original Color
FFC1D1



Achromatopsia
D5D5D5



Achromatomaly
E4CED4

CSS Examples

Text

The CSS property to change the color of the text to Hex FFC1D1 is called "color". The color property can be set on classes, ids or directly on the HTML element.

This example shows how text in the color #FFC1D1 looks like.

```
.text, #text, p{  
    color:#FFC1D1  
}
```

If you want to add a text shadow in that color use the text-shadow property, you can generate a text shadow directly with our [CSS Text Shadow Generator](#).

Here you see how black text with a 4 pixel #FFC1D1 colored shadow looks like.

```
.shadow{ text-shadow: 4px 4px 2px #FFC1D1
}
```

Border

The CSS property to change the border of an element to Hex FFC1D1 is called "border". The border property can be set on classes, ids or directly on the HTML element.

This example shows the color as border, it can be applied via the CSS property "border" or "border-color".

```
.border, #border, table{ border:4px solid
#FFC1D1 }
```

If only the border color should be changed use the property `border-color`.

```
.border{ border-color:#FFC1D1 }
```

If you want to add a box shadow in that color use:

Here you see how a box with a 4 pixel #FFC1D1 colored shadow looks like.

```
.boxshadow{ -moz-box-shadow:4px 4px 4px  
4px #FFC1D1; -webkit-box-shadow:4px 4px  
4px 4px #FFC1D1; box-shadow:4px 4px 4px  
4px #FFC1D1 }
```

Background

The CSS property to change the background color of an element to Hex FFC1D1 is called "background". The background property can be set on classes, ids or directly on the HTML element.

```
.background, #background, body{  
background:#FFC1D1 }
```

If only the background color should be changed can be used:

```
.background{ background-color:#FFC1D1 }
```

This example shows the color as background, it is applied via the CSS property "background".

To optimize and compress your CSS code, you can use our [online CSS compressor and optimizer](#) based on csstidy. If you want to create a linear or radial gradient as background or border, check our [CSS Gradient Generator](#).

Hey! You found this booklet interesting? Support Converting Colors with the new Membership Option!

The pro membership hides all ads, plus gives you double the colors in the color bucket, and more awesome pro features!

[Learn more, Memberships starting at \\$2.50/m!](#)

**Follow me
on Twitter!**

@ConvertingColor