

Converting Colors

Hex(FFC2AC)

Have a look what the booklet for
Hex(FFC2AC) contains.

Hex(FFC2AC)	3
<i>Conversions</i>	4
<i>Details</i>	6
<i>Harmonies</i>	11
<i>Previews</i>	23
<i>Color Blindness Simulation</i>	26
<i>CSS Examples</i>	29

Color

Hex(FFC2AC)

Conversions

Conversions Part 1

Format	Color
Hex	FFC2AC
RGB	255, 194, 172
RGB Percent	100%, 76%, 67%
CMY	0.0000, 0.2392, 0.3255
CMYK	0.00, 0.24, 0.33, 0.00
HSL	16°, 100%, 84%
HSV	16°, 33%, 100%
XYZ	67.9782, 62.8221, 47.5728
YIQ	209.7310, 43.4180, 6.0900

Conversions

Conversions Part 2

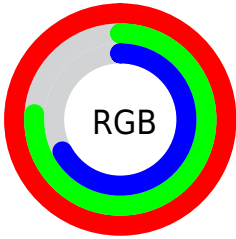
Format	Color
R _Y B	255, 202, 172
Decimal	16761516
CIE Lab	83.35, 18.92, 19.53
CIE LCh	83, 27.188, 45.913
Yxy	62.8221, 0.3811, 0.3522
Android (android.graphics.Color)	4294951596 (0xFFFFC2AC)
YUV	209.7310, -18.6014, 39.7009
Hunter-Lab	79.2604, 14.3859, 19.8959

Details

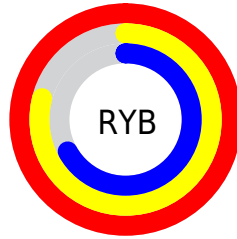
The Hex color **FFC2AC** is a light color, and the websafe version is hex **FFCCCC**. A complement of this color would be **ACE9FF**, and the grayscale version is **D2D2D2**.

A 20% lighter version of the original color is **FFFBE3**, and **C58C78** is the 20% darker color. If you saturate the color by 10%, you get **FFAF93**, and if you desaturate by 10%, it is **FFD5C6**.

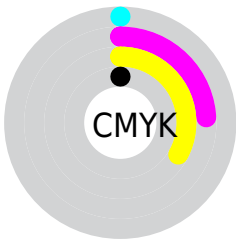
Distribution



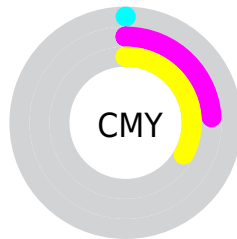
- Red (100%)
- Green (76%)
- Blue (67%)



- Red (100%)
- Yellow (79%)
- Blue (67%)



- Cyan (0%)
- Magenta (24%)
- Yellow (33%)
- Black (0%)



- Cyan (0%)
- Magenta (24%)
- Yellow (33%)

Brightness & Saturation Gradients

These gradients show how the Hex color FFC2AC changes by changing the brightness by 10 percent. The first figure shows a shift by +10% for each color and the second figure -10%.

Similar to the brightness gradients but the following saturation gradients show a change of the Hex color FFC2AC by changing the saturation by 10% instead.

 FFC2AC

 FFC2AC

FFFFFF

 E2A791

 FFFBE3

 C58C78

 A9735F

 8D5A47

 724230

 582B1B

 3F1602

 270000

 000000

 FFC2AC

 FFC2AC

 FFAF93

 FFD5C6

 FF9D79

 FFE7DF

 FF8A60

 FFFAF9

 FF7746

FFFFFF

 FF642D

 FF5213

 FF4400

Harmonies

Analogous

The Analogous color harmony consists of three colors that are next to each other on the color wheel.



FFBEC3



FFC2AC



EECA9F

Triad

The Triadic color harmony groups three colors that are evenly spaced from another and form a triangle on the color wheel.



FFC2AC



9CDDC2



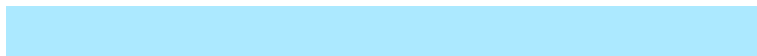
C4CDFF

Complementary

The Complementary color scheme is a pair of colors which are on the opposite of each other on the color wheel.



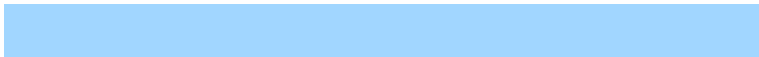
FFC2AC



ACE9FF

Split Complementary

Split-complementary colors differ from the complementary color scheme. The scheme consists of three colors, the original color and two neighbors of the complement color.



A1D6FF



FFC2AC



89DEDD

Square

The Square scheme is like the rectangle color scheme, but the four colors are evenly spaced on the color wheel.



FFC2AC



B7D9AB



8ADCF4



E4C5F3

Rectangle

The Rectangle color scheme consists of four colors that form a rectangle on the color wheel.



FFC2AC



DED09D



8ADCF4



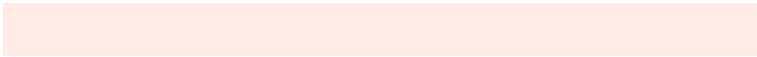
B8D0FF

Sweetspot

The Sweet Spot groups the original color and five complimentary colors.



FFC2AC



FFECE6



FFACEA



807470



000000



808080

Same Dimension

The Same Dimension uses a secret algorithm to generate beautiful new colors.



FFC2AC



FFB69C



FFEAAC



807673



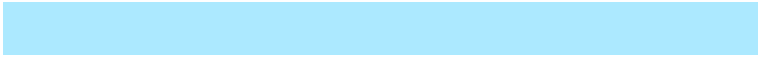
BF3300



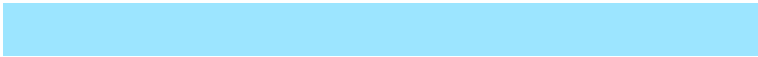
401100

Inverse Universe

The Inverse Universe completely reimagines the original color for something new.



ACE9FF



9CE5FF



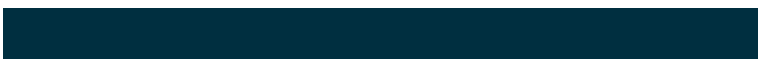
ACC1FF



737C80



008DBF



002F40

Previews

White Background



This preview shows how the Hex color FFC2AC looks on a white background.

Color Contrast Check

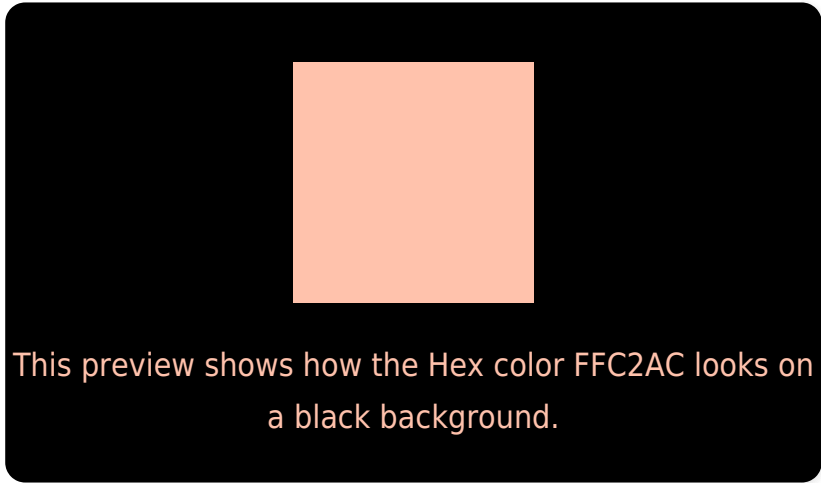
Large Text (above 18pt) WCAG AA × Fail

Any Text WCAG AA × Fail

Large Text (above 18pt) WCAG AAA × Fail

Any Text WCAG AAA × Fail

Black Background



Color Contrast Check

Large Text (above 18pt) WCAG AA ✓ Pass

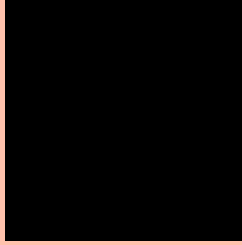
Any Text WCAG AA ✓ Pass

Large Text (above 18pt) WCAG AAA ✓ Pass

Any Text WCAG AAA ✓ Pass

If you want to check with other color combinations, try the [Color Contrast Checker](#).

Hex FFC2AC Background



This preview shows how black text looks on a background with the Hex color FFC2AC.

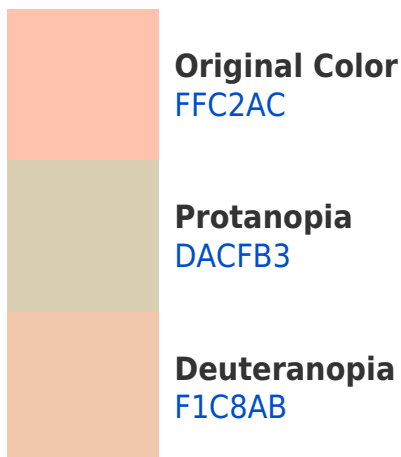


This preview shows how white text looks on a background with the Hex color FFC2AC.

Color Blindness Simulation

Color vision deficiency is a very complex topic, and I could not describe the different causes any better than Wikipedia does, so if you want to learn more, you should check out their [article about color blindness](#).

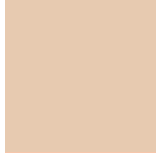
Dichromacy



Trichromacy



Original Color
FFC2AC



Protanomaly
E7CAB0



Deuteranomaly
F6C6AB

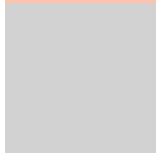


Tritanomaly
FFC0C0

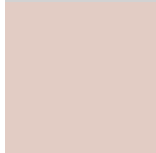
Monochromacy



Original Color
FFC2AC



Achromatopsia
D2D2D2



Achromatomaly
E2CCC4

CSS Examples

Text

The CSS property to change the color of the text to Hex FFC2AC is called "color". The color property can be set on classes, ids or directly on the HTML element.

This example shows how text in the color #FFC2AC looks like.

```
.text, #text, p{  
  color:#FFC2AC  
}
```

If you want to add a text shadow in that color use the text-shadow property, you can generate a text shadow directly with our [CSS Text Shadow Generator](#).

Here you see how black text with a 4 pixel #FFC2AC colored shadow looks like.

```
.shadow{ text-shadow: 4px 4px 2px #FFC2AC
}
```

Border

The CSS property to change the border of an element to Hex FFC2AC is called "border". The border property can be set on classes, ids or directly on the HTML element.

This example shows the color as border, it can be applied via the CSS property "border" or "border-color".

```
.border, #border, table{ border:4px solid
#FFC2AC }
```

If only the border color should be changed use the property `border-color`.

```
.border{ border-color:#FFC2AC }
```

If you want to add a box shadow in that color use:

Here you see how a box with a 4 pixel #FFC2AC colored shadow looks like.

```
.boxshadow{ -moz-box-shadow:4px 4px 4px  
4px #FFC2AC; -webkit-box-shadow:4px 4px  
4px 4px #FFC2AC; box-shadow:4px 4px 4px  
4px #FFC2AC }
```

Background

The CSS property to change the background color of an element to Hex FFC2AC is called "background". The background property can be set on classes, ids or directly on the HTML element.

```
.background, #background, body{  
background:#FFC2AC }
```

If only the background color should be changed can be used:

```
.background{ background-color:#FFC2AC }
```

This example shows the color as background, it is applied via the CSS property "background".

To optimize and compress your CSS code, you can use our [online CSS compressor and optimizer](#) based on csstidy. If you want to create a linear or radial gradient as background or border, check our [CSS Gradient Generator](#).

Hey! You found this booklet interesting? Support Converting Colors with the new Membership Option!

The pro membership hides all ads, plus gives you double the colors in the color bucket, and more awesome pro features!

[Learn more, Memberships starting at \\$2.50/m!](#)

**Follow me
on Twitter!**

@ConvertingColor