

Converting Colors

Hex(FFC2D2)

Have a look what the booklet for
Hex(FFC2D2) contains.

Hex(FFC2D2)	3
<i>Conversions</i>	4
<i>Details</i>	6
<i>Harmonies</i>	11
<i>Previews</i>	23
<i>Color Blindness Simulation</i>	26
<i>CSS Examples</i>	29

Color

Hex(FFC2D2)

Conversions

Conversions Part 1

Format	Color
Hex	FFC2D2
RGB	255, 194, 210
RGB Percent	100%, 76%, 82%
CMY	0.0000, 0.2392, 0.1765
CMYK	0.00, 0.24, 0.18, 0.00
HSL	344°, 100%, 88%
HSV	344°, 24%, 100%
XYZ	72.1646, 64.4967, 69.6184
YIQ	214.0630, 31.2200, 17.9080

Conversions

Conversions Part 2

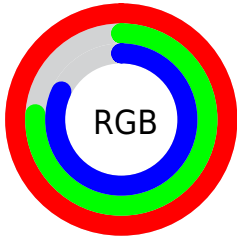
Format	Color
R _Y B	255, 194, 210
Decimal	16761554
CIE Lab	84.22, 24.14, 0.50
CIE LCh	84, 24.147, 1.186
Yxy	64.4967, 0.3498, 0.3127
Android (android.graphics.Color)	4294951634 (0xFFFFC2D2)
YUV	214.0630, -2.0031, 35.9017
Hunter-Lab	80.3098, 19.8539, 4.8200

Details

The Hex color **FFC2D2** is a light color, and the websafe version is hex **FFCCCC**. A complement of this color would be **C2FFEF**, and the grayscale version is **D6D6D6**.

A 20% lighter version of the original color is **FFFBFF**, and **C58C9C** is the 20% darker color. If you saturate the color by 10%, you get **FFA9BF**, and if you desaturate by 10%, it is **FFDBE5**.

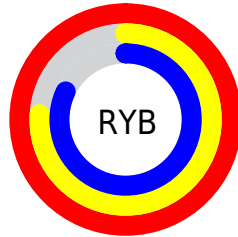
Distribution



Red (100%)

Green (76%)

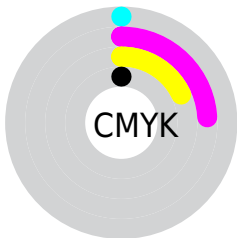
Blue (82%)



Red (100%)

Yellow (76%)

Blue (82%)

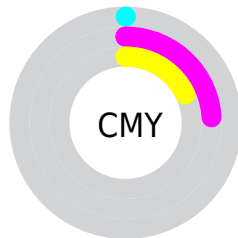


Cyan (0%)

Magenta (24%)

Yellow (18%)

Black (0%)



Cyan (0%)

Magenta (24%)

Yellow (18%)

Brightness & Saturation Gradients

These gradients show how the Hex color FFC2D2 changes by changing the brightness by 10 percent. The first figure shows a shift by +10% for each color and the second figure -10%.

Similar to the brightness gradients but the following saturation gradients show a change of the Hex color FFC2D2 by changing the saturation by 10% instead.

 FFC2D2

 FFC2D2

FFFFFF

 E2A7B6

 FFFBFF

 C58C9C

 AA7282

 8F5969

 744150

 5B2A3A

 421424

 2B000F

 000000

 FFC2D2

 FFC2D2

 FFA9BF

 FFDBE5

 FF8FAC

 FFF5F8

 FF769A

FFFFFF

 FF5C87

 FF4274

 FF2961

 FF104E

 FF0043

Harmonies

Analogous

The Analogous color harmony consists of three colors that are next to each other on the color wheel.



F1C5E8



FFC2D2



FFC4BC

Triad

The Triadic color harmony groups three colors that are evenly spaced from another and form a triangle on the color wheel.



FFC2D2



CAD8AB



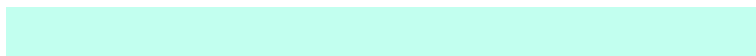
9EDAF9

Complementary

The Complementary color scheme is a pair of colors which are on the opposite of each other on the color wheel.



FFC2D2



C2FFEF

Split Complementary

Split-complementary colors differ from the complementary color scheme. The scheme consists of three colors, the original color and two neighbors of the complement color.



93DEE9



FFC2D2



B0DDBC

Square

The Square scheme is like the rectangle color scheme, but the four colors are evenly spaced on the color wheel.



FFC2D2



E3D1A5



9BDFD2



B9D4FF

Rectangle

The Rectangle color scheme consists of four colors that form a rectangle on the color wheel.



`FFC2D2`



`FBC7B0`



`9BDFD2`



`98DCF5`

Sweetspot

The Sweet Spot groups the original color and five complimentary colors.



FFC2D2



FFEDF2



EFC2FF



807578



000000



808080

Same Dimension

The Same Dimension uses a secret algorithm to generate beautiful new colors.



FFC2D2



FFB5C8



FFD0C2



807376



BF0032



400011

Inverse Universe

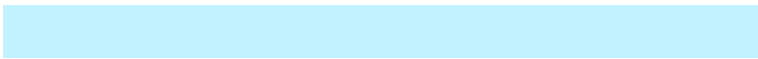
The Inverse Universe completely reimagines the original color for something new.



FFC2D2



FFB5C8



C2F1FF



807376



BF0032



400011

Previews

White Background



This preview shows how the Hex color FFC2D2 looks on a white background.

Color Contrast Check

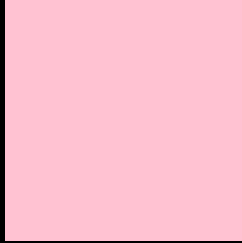
Large Text (above 18pt) WCAG AA × Fail

Any Text WCAG AA × Fail

Large Text (above 18pt) WCAG AAA × Fail

Any Text WCAG AAA × Fail

Black Background



This preview shows how the Hex color FFC2D2 looks on a black background.

Color Contrast Check

Large Text (above 18pt) WCAG AA ✓ Pass

Any Text WCAG AA ✓ Pass

Large Text (above 18pt) WCAG AAA ✓ Pass

Any Text WCAG AAA ✓ Pass

If you want to check with other color combinations, try the [Color Contrast Checker](#).

Hex FFC2D2 Background



This preview shows how black text looks on a background with the Hex color FFC2D2.

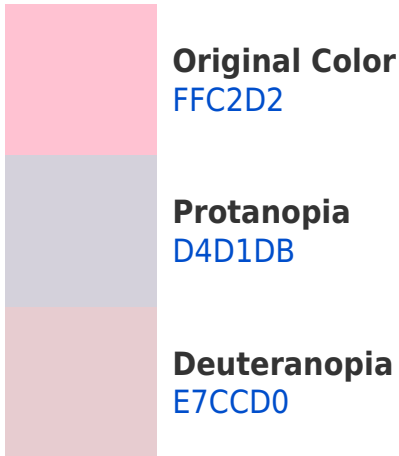


This preview shows how white text looks on a background with the Hex color FFC2D2.

Color Blindness Simulation

Color vision deficiency is a very complex topic, and I could not describe the different causes any better than Wikipedia does, so if you want to learn more, you should check out their [article about color blindness](#).

Dichromacy



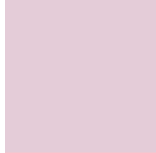


Tritanopia
FFC2D1

Trichromacy



Original Color
FFC2D2



Protanomaly
E4CCD8



Deuteranomaly
F0C8D1

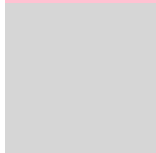


Tritanomaly
FFC2D1

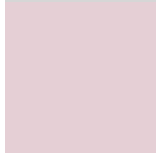
Monochromacy



Original Color
FFC2D2



Achromatopsia
D6D6D6



Achromatomaly
E5CFD5

CSS Examples

Text

The CSS property to change the color of the text to Hex FFC2D2 is called "color". The color property can be set on classes, ids or directly on the HTML element.

This example shows how text in the color #FFC2D2 looks like.

```
.text, #text, p{  
    color:#FFC2D2  
}
```

If you want to add a text shadow in that color use the text-shadow property, you can generate a text shadow directly with our [CSS Text Shadow Generator](#).

Here you see how black text with a 4 pixel #FFC2D2 colored shadow looks like.

```
.shadow{ text-shadow: 4px 4px 2px #FFC2D2
}
```

Border

The CSS property to change the border of an element to Hex FFC2D2 is called "border". The border property can be set on classes, ids or directly on the HTML element.

This example shows the color as border, it can be applied via the CSS property "border" or "border-color".

```
.border, #border, table{ border:4px solid
#FFC2D2 }
```

If only the border color should be changed use the property `border-color`.

```
.border{ border-color:#FFC2D2 }
```

If you want to add a box shadow in that color use:

Here you see how a box with a 4 pixel #FFC2D2 colored shadow looks like.

```
.boxshadow{ -moz-box-shadow:4px 4px 4px  
4px #FFC2D2; -webkit-box-shadow:4px 4px  
4px 4px #FFC2D2; box-shadow:4px 4px 4px  
4px #FFC2D2 }
```

Background

The CSS property to change the background color of an element to Hex FFC2D2 is called "background". The background property can be set on classes, ids or directly on the HTML element.

```
.background, #background, body{  
background:#FFC2D2 }
```

If only the background color should be changed can be used:

```
.background{ background-color:#FFC2D2 }
```

This example shows the color as background, it is applied via the CSS property "background".

To optimize and compress your CSS code, you can use our [online CSS compressor and optimizer](#) based on csstidy. If you want to create a linear or radial gradient as background or border, check our [CSS Gradient Generator](#).

Hey! You found this booklet interesting? Support Converting Colors with the new Membership Option!

The pro membership hides all ads, plus gives you double the colors in the color bucket, and more awesome pro features!

[Learn more, Memberships starting at \\$2.50/m!](#)

**Follow me
on Twitter!**

@ConvertingColor