

Converting Colors

Hex(FFC3CE)

Have a look what the booklet for
Hex(FFC3CE) contains.

Hex(FFC3CE)	3
<i>Conversions</i>	4
<i>Details</i>	6
<i>Harmonies</i>	11
<i>Previews</i>	23
<i>Color Blindness Simulation</i>	26
<i>CSS Examples</i>	29

Color

Hex(FFC3CE)

Conversions

Conversions Part 1

Format	Color
Hex	FFC3CE
RGB	255, 195, 206
RGB Percent	100%, 76%, 81%
CMY	0.0000, 0.2353, 0.1922
CMYK	0.00, 0.24, 0.19, 0.00
HSL	349°, 100%, 88%
HSV	349°, 24%, 100%
XYZ	71.8957, 64.7464, 67.1005
YIQ	214.1940, 32.2290, 16.1410

Conversions

Conversions Part 2

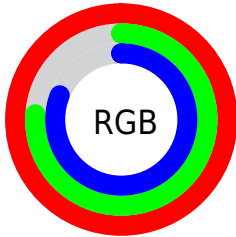
Format	Color
R _Y B	255, 195, 206
Decimal	16761806
CIE Lab	84.35, 23.02, 2.83
CIE LCh	84, 23.190, 6.998
Yxy	64.7464, 0.3529, 0.3178
Android (android.graphics.Color)	4294951886 (0xFFFFC3CE)
YUV	214.1940, -4.0396, 35.7869
Hunter-Lab	80.4652, 18.6758, 6.8832

Details

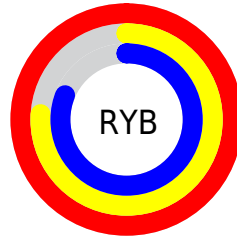
The Hex color **FFC3CE** is a light color, and the websafe version is hex **FFCCCC**. A complement of this color would be **C3FFF4**, and the grayscale version is **D6D6D6**.

A 20% lighter version of the original color is **FFFCFF**, and **C58D98** is the 20% darker color. If you saturate the color by 10%, you get **FFAAB9**, and if you desaturate by 10%, it is **FFDCE3**.

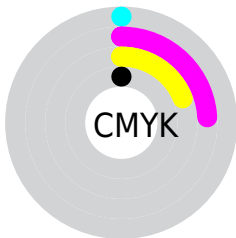
Distribution



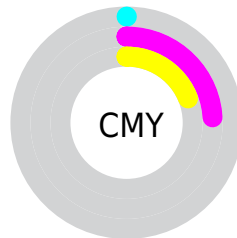
- Red (100%)
- Green (76%)
- Blue (81%)



- Red (100%)
- Yellow (76%)
- Blue (81%)



- Cyan (0%)
- Magenta (24%)
- Yellow (19%)
- Black (0%)



- Cyan (0%)
- Magenta (24%)
- Yellow (19%)

Brightness & Saturation Gradients

These gradients show how the Hex color FFC3CE changes by changing the brightness by 10 percent. The first figure shows a shift by +10% for each color and the second figure -10%.

Similar to the brightness gradients but the following saturation gradients show a change of the Hex color FFC3CE by changing the saturation by 10% instead.

 FFC3CE

 FFC3CE

FFFFFF

 E2A8B3

 FFFCFF

 C58D98

 AA737E

 8E5A65

 74424D

 5A2B36

 421521

 2B000A

 000000

 FFC3CE

 FFC3CE

 FFAAB9

 FFDCE3

 FF90A4

 FFF6F8

 FF7790

FFFFFF

 FF5D7B

 FF4366

 FF2A51

 FF103C

 FF002F

Harmonies

Analogous

The Analogous color harmony consists of three colors that are next to each other on the color wheel.



F3C5E4



FFC3CE



FEC5B9

Triad

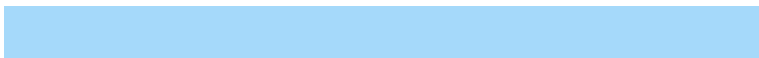
The Triadic color harmony groups three colors that are evenly spaced from another and form a triangle on the color wheel.



FFC3CE



C6D9AF



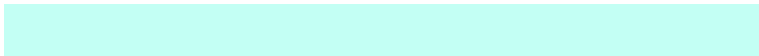
A5D9FA

Complementary

The Complementary color scheme is a pair of colors which are on the opposite of each other on the color wheel.



FFC3CE



C3FFF4

Split Complementary

Split-complementary colors differ from the complementary color scheme. The scheme consists of three colors, the original color and two neighbors of the complement color.



97DEEC



FFC3CE



ADDEC1

Square

The Square scheme is like the rectangle color scheme, but the four colors are evenly spaced on the color wheel.



FFC3CE



DED3A7



9BDFD7



C0D3FE

Rectangle

The Rectangle color scheme consists of four colors that form a rectangle on the color wheel.



FFC3CE



F7C9AF



9BDFD7



9FDBF6

Sweetspot

The Sweet Spot groups the original color and five complimentary colors.



FFC3CE



FFEDF0



F4C3FF



807577



000000



808080

Same Dimension

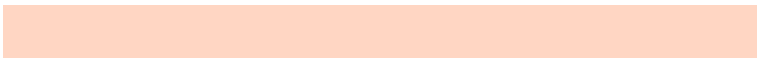
The Same Dimension uses a secret algorithm to generate beautiful new colors.



FFC3CE



FFB8C5



FFD6C3



807375



BF0023



40000C

Inverse Universe

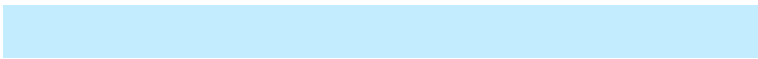
The Inverse Universe completely reimagines the original color for something new.



FFC3CE



FFB8C5



C3ECFF



807375



BF0023



40000C

Previews

White Background



This preview shows how the Hex color FFC3CE looks on a white background.

Color Contrast Check

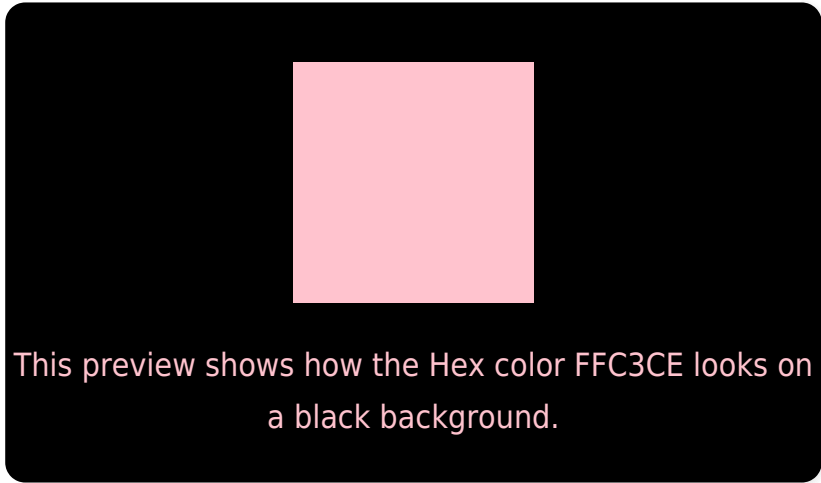
Large Text (above 18pt) WCAG AA × Fail

Any Text WCAG AA × Fail

Large Text (above 18pt) WCAG AAA × Fail

Any Text WCAG AAA × Fail

Black Background



Color Contrast Check

Large Text (above 18pt) WCAG AA ✓ Pass

Any Text WCAG AA ✓ Pass

Large Text (above 18pt) WCAG AAA ✓ Pass

Any Text WCAG AAA ✓ Pass

If you want to check with other color combinations, try the [Color Contrast Checker](#).

Hex FFC3CE Background



This preview shows how black text looks on a background with the Hex color FFC3CE.

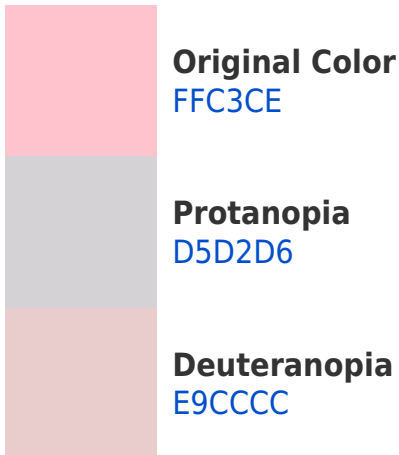


This preview shows how white text looks on a background with the Hex color FFC3CE.

Color Blindness Simulation

Color vision deficiency is a very complex topic, and I could not describe the different causes any better than Wikipedia does, so if you want to learn more, you should check out their [article about color blindness](#).

Dichromacy



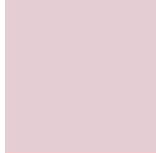


Tritanopia
FFC3D1

Trichromacy



Original Color
FFC3CE



Protanomaly
E4CDD3



Deuteranomaly
F1C9CD

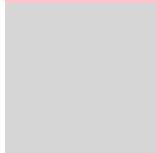


Tritanomaly
FFC3D0

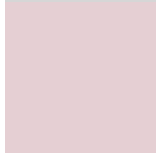
Monochromacy



Original Color
FFC3CE



Achromatopsia
D6D6D6



Achromatomaly
E5CFD3

CSS Examples

Text

The CSS property to change the color of the text to Hex FFC3CE is called "color". The color property can be set on classes, ids or directly on the HTML element.

This example shows how text in the color #FFC3CE looks like.

```
.text, #text, p{  
    color:#FFC3CE  
}
```

If you want to add a text shadow in that color use the text-shadow property, you can generate a text shadow directly with our [CSS Text Shadow Generator](#).

Here you see how black text with a 4 pixel #FFC3CE colored shadow looks like.

```
.shadow{ text-shadow: 4px 4px 2px #FFC3CE
}
```

Border

The CSS property to change the border of an element to Hex FFC3CE is called "border". The border property can be set on classes, ids or directly on the HTML element.

This example shows the color as border, it can be applied via the CSS property "border" or "border-color".

```
.border, #border, table{ border:4px solid
#FFC3CE }
```

If only the border color should be changed use the property `border-color`.

```
.border{ border-color:#FFC3CE }
```

If you want to add a box shadow in that color use:

Here you see how a box with a 4 pixel #FFC3CE colored shadow looks like.

```
.boxshadow{ -moz-box-shadow:4px 4px 4px  
4px #FFC3CE; -webkit-box-shadow:4px 4px  
4px 4px #FFC3CE; box-shadow:4px 4px 4px  
4px #FFC3CE }
```

Background

The CSS property to change the background color of an element to Hex FFC3CE is called "background". The background property can be set on classes, ids or directly on the HTML element.

```
.background, #background, body{  
background:#FFC3CE }
```

If only the background color should be changed can be used:

```
.background{ background-color:#FFC3CE }
```

This example shows the color as background, it is applied via the CSS property "background".

To optimize and compress your CSS code, you can use our [online CSS compressor and optimizer](#) based on csstidy. If you want to create a linear or radial gradient as background or border, check our [CSS Gradient Generator](#).

Hey! You found this booklet interesting? Support Converting Colors with the new Membership Option!

The pro membership hides all ads, plus gives you double the colors in the color bucket, and more awesome pro features!

[Learn more, Memberships starting at \\$2.50/m!](#)

**Follow me
on Twitter!**

@ConvertingColor