

Converting Colors

Hex(FFC4C2)

Have a look what the booklet for
Hex(FFC4C2) contains.

Hex(FFC4C2)	3
<i>Conversions</i>	4
<i>Details</i>	6
<i>Harmonies</i>	11
<i>Previews</i>	23
<i>Color Blindness Simulation</i>	26
<i>CSS Examples</i>	29

Color

Hex(FFC4C2)

Conversions

Conversions Part 1

Format	Color
Hex	FFC4C2
RGB	255, 196, 194
RGB Percent	100%, 77%, 76%
CMY	0.0000, 0.2314, 0.2392
CMYK	0.00, 0.23, 0.24, 0.00
HSL	2°, 100%, 88%
HSV	2°, 24%, 100%
XYZ	70.7175, 64.6349, 59.7875
YIQ	213.4130, 35.8060, 11.8860

Conversions

Conversions Part 2

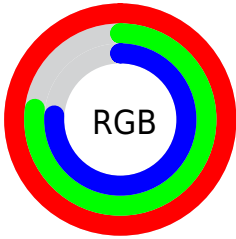
Format	Color
R _Y B	255, 196, 194
Decimal	16762050
CIE Lab	84.30, 20.76, 9.15
CIE LCh	84, 22.690, 23.777
Yxy	64.6349, 0.3624, 0.3312
Android (android.graphics.Color)	4294952130 (0xFFFFC4C2)
YUV	213.4130, -9.5706, 36.4718
Hunter-Lab	80.3958, 16.3189, 12.1852

Details

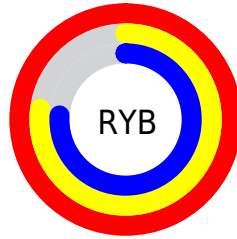
The Hex color **FFC4C2** is a light color, and the websafe version is hex **FFCCCC**. A complement of this color would be **C2FDFF**, and the grayscale version is **D5D5D5**.

A 20% lighter version of the original color is **FFDFA**, and **C58E8C** is the 20% darker color. If you saturate the color by 10%, you get **FFABA9**, and if you desaturate by 10%, it is **FFDDDB**.

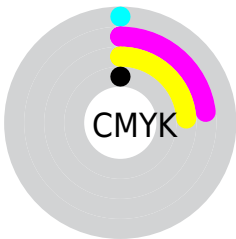
Distribution



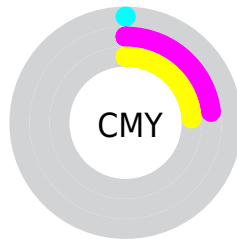
- Red (100%)
- Green (77%)
- Blue (76%)



- Red (100%)
- Yellow (77%)
- Blue (76%)



- Cyan (0%)
- Magenta (23%)
- Yellow (24%)
- Black (0%)



- Cyan (0%)
- Magenta (23%)
- Yellow (24%)

Brightness & Saturation Gradients

These gradients show how the Hex color FFC4C2 changes by changing the brightness by 10 percent. The first figure shows a shift by +10% for each color and the second figure -10%.

Similar to the brightness gradients but the following saturation gradients show a change of the Hex color FFC4C2 by changing the saturation by 10% instead.

 FFC4C2

 FFC4C2

FFFFFF

 E2A9A7

 FFFDFA

 C58E8C

 A97473

 8E5B5A

 744343

 5A2C2D

 411718

 2B0000

 000000

 FFC4C2

 FFC4C2

 FFABA9

 FFDDDB

 FF938F

 FFF5F5

 FF7A76

FFFFFF

 FF615C

 FF4942

 FF3029

 FF1710

 FF0800

Harmonies

Analogous

The Analogous color harmony consists of three colors that are next to each other on the color wheel.



FAC4D8



FFC4C2



F8C9B1

Triad

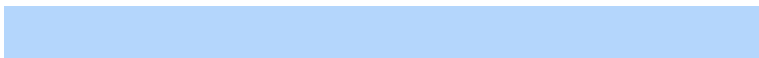
The Triadic color harmony groups three colors that are evenly spaced from another and form a triangle on the color wheel.



FFC4C2



B8DCB8



B4D6FC

Complementary

The Complementary color scheme is a pair of colors which are on the opposite of each other on the color wheel.



FFC4C2



C2FDFD

Split Complementary

Split-complementary colors differ from the complementary color scheme. The scheme consists of three colors, the original color and two neighbors of the complement color.



9EDBF4



FFC4C2



A3DECD

Square

The Square scheme is like the rectangle color scheme, but the four colors are evenly spaced on the color wheel.



FFC4C2



D1D6AB



98DEE3



D0CEF9

Rectangle

The Rectangle color scheme consists of four colors that form a rectangle on the color wheel.



FFC4C2



EECDAA



98DEE3



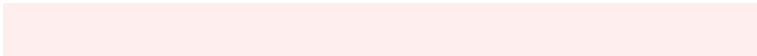
ACD8FB

Sweetspot

The Sweet Spot groups the original color and five complimentary colors.



FFC4C2



FFEEED



FFC2FE



807675



000000



808080

Same Dimension

The Same Dimension uses a secret algorithm to generate beautiful new colors.



FFC4C2



FFB7B5



FFE2C2



807373



BF0600



400200

Inverse Universe

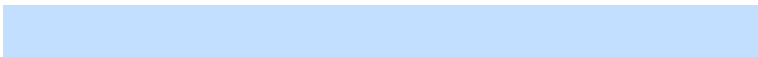
The Inverse Universe completely reimagines the original color for something new.



C2FDFD



B5FDFD



C2DFFF



737F80



00B9BF



003E40

Previews

White Background



This preview shows how the Hex color FFC4C2 looks on a white background.

Color Contrast Check

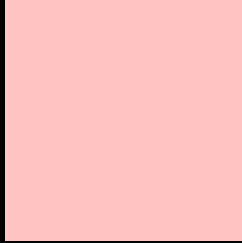
Large Text (above 18pt) WCAG AA × Fail

Any Text WCAG AA × Fail

Large Text (above 18pt) WCAG AAA × Fail

Any Text WCAG AAA × Fail

Black Background



This preview shows how the Hex color FFC4C2 looks on a black background.

Color Contrast Check

Large Text (above 18pt) WCAG AA ✓ Pass

Any Text WCAG AA ✓ Pass

Large Text (above 18pt) WCAG AAA ✓ Pass

Any Text WCAG AAA ✓ Pass

If you want to check with other color combinations, try the [Color Contrast Checker](#).

Hex FFC4C2 Background



This preview shows how black text looks on a background with the Hex color FFC4C2.

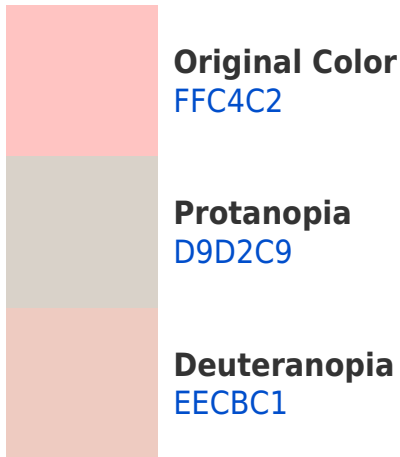


This preview shows how white text looks on a background with the Hex color FFC4C2.

Color Blindness Simulation

Color vision deficiency is a very complex topic, and I could not describe the different causes any better than Wikipedia does, so if you want to learn more, you should check out their [article about color blindness](#).

Dichromacy



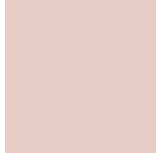


Tritanopia
FFC2D1

Trichromacy



Original Color
FFC4C2



Protanomaly
E7CDC6



Deuteranomaly
F4C8C1

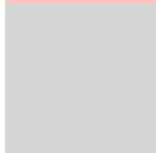


Tritanomaly
FFC3CC

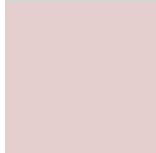
Monochromacy



Original Color
FFC4C2



Achromatopsia
D5D5D5



Achromatomaly
E4CFCE

CSS Examples

Text

The CSS property to change the color of the text to Hex FFC4C2 is called "color". The color property can be set on classes, ids or directly on the HTML element.

This example shows how text in the color #FFC4C2 looks like.

```
.text, #text, p{  
    color:#FFC4C2  
}
```

If you want to add a text shadow in that color use the text-shadow property, you can generate a text shadow directly with our [CSS Text Shadow Generator](#).

Here you see how black text with a 4 pixel #FFC4C2 colored shadow looks like.

```
.shadow{ text-shadow: 4px 4px 2px #FFC4C2
}
```

Border

The CSS property to change the border of an element to Hex FFC4C2 is called "border". The border property can be set on classes, ids or directly on the HTML element.

This example shows the color as border, it can be applied via the CSS property "border" or "border-color".

```
.border, #border, table{ border:4px solid
#FFC4C2 }
```

If only the border color should be changed use the property `border-color`.

```
.border{ border-color:#FFC4C2 }
```

If you want to add a box shadow in that color use:

Here you see how a box with a 4 pixel #FFC4C2 colored shadow looks like.

```
.boxshadow{ -moz-box-shadow:4px 4px 4px  
4px #FFC4C2; -webkit-box-shadow:4px 4px  
4px 4px #FFC4C2; box-shadow:4px 4px 4px  
4px #FFC4C2 }
```

Background

The CSS property to change the background color of an element to Hex FFC4C2 is called "background". The background property can be set on classes, ids or directly on the HTML element.

```
.background, #background, body{  
background:#FFC4C2 }
```

If only the background color should be changed can be used:

```
.background{ background-color:#FFC4C2 }
```

This example shows the color as background, it is applied via the CSS property "background".

To optimize and compress your CSS code, you can use our [online CSS compressor and optimizer](#) based on csstidy. If you want to create a linear or radial gradient as background or border, check our [CSS Gradient Generator](#).

Hey! You found this booklet interesting? Support Converting Colors with the new Membership Option!

The pro membership hides all ads, plus gives you double the colors in the color bucket, and more awesome pro features!

[Learn more, Memberships starting at \\$2.50/m!](#)

**Follow me
on Twitter!**

@ConvertingColor