

Converting Colors

Hex(FFC5D4)

Have a look what the booklet for
Hex(FFC5D4) contains.

Hex(FFC5D4)	3
<i>Conversions</i>	4
<i>Details</i>	6
<i>Harmonies</i>	11
<i>Previews</i>	23
<i>Color Blindness Simulation</i>	26
<i>CSS Examples</i>	29

Color

Hex(FFC5D4)

Conversions

Conversions Part 1

Format	Color
Hex	FFC5D4
RGB	255, 197, 212
RGB Percent	100%, 77%, 83%
CMY	0.0000, 0.2275, 0.1686
CMYK	0.00, 0.23, 0.17, 0.00
HSL	344°, 100%, 89%
HSV	344°, 23%, 100%
XYZ	73.0899, 65.9460, 71.1639
YIQ	216.0520, 29.7530, 16.9610

Conversions

Conversions Part 2

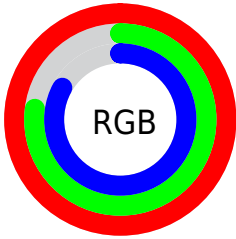
Format	Color
R _Y B	255, 197, 212
Decimal	16762324
CIE Lab	84.97, 22.87, 0.52
CIE LCh	85, 22.877, 1.299
Yxy	65.9460, 0.3477, 0.3137
Android (android.graphics.Color)	4294952404 (0xFFFFC5D4)
YUV	216.0520, -1.9976, 34.1574
Hunter-Lab	81.2071, 18.5452, 4.8876

Details

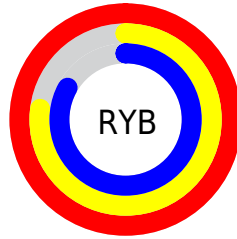
The Hex color **FFC5D4** is a light color, and the websafe version is hex **FFCCCC**. A complement of this color would be **C5FFF0**, and the grayscale version is **D8D8D8**.

A 20% lighter version of the original color is **FFFEFF**, and **C68F9D** is the 20% darker color. If you saturate the color by 10%, you get **FFACC1**, and if you desaturate by 10%, it is **FFDFE7**.

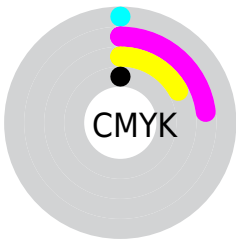
Distribution



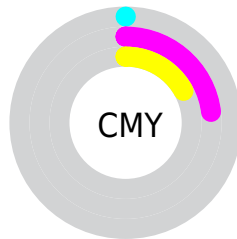
- Red (100%)
- Green (77%)
- Blue (83%)



- Red (100%)
- Yellow (77%)
- Blue (83%)



- Cyan (0%)
- Magenta (23%)
- Yellow (17%)
- Black (0%)



- Cyan (0%)
- Magenta (23%)
- Yellow (17%)

Brightness & Saturation Gradients

These gradients show how the Hex color FFC5D4 changes by changing the brightness by 10 percent. The first figure shows a shift by +10% for each color and the second figure -10%.

Similar to the brightness gradients but the following saturation gradients show a change of the Hex color FFC5D4 by changing the saturation by 10% instead.

 FFC5D4

 FFC5D4

FFFFFF

 E2AAB8

FFFEFF

 C68F9D

 AA7583

 8F5C6A

 744452

 5B2D3B

 421726

 2B0011

 030000

 FFC5D4

 FFC5D4

 FFACC1

 FFDFE7

 FF92AE

 FFF8FA

 FF799B

FFFFFF

 FF5F88

 FF4575

 FF2C63

 FF1250

 FF0042

Harmonies

Analogous

The Analogous color harmony consists of three colors that are next to each other on the color wheel.



F1C8E9



FFC5D4



FFC7BF

Triad

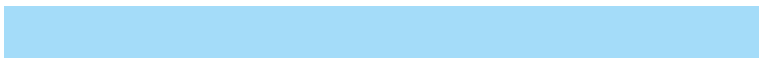
The Triadic color harmony groups three colors that are evenly spaced from another and form a triangle on the color wheel.



FFC5D4



CCDAAF



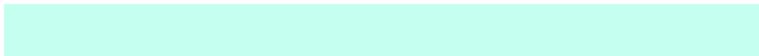
A4DCF9

Complementary

The Complementary color scheme is a pair of colors which are on the opposite of each other on the color wheel.



FFC5D4



C5FFF0

Split Complementary

Split-complementary colors differ from the complementary color scheme. The scheme consists of three colors, the original color and two neighbors of the complement color.



99E0EA



FFC5D4



B4DFBF

Square

The Square scheme is like the rectangle color scheme, but the four colors are evenly spaced on the color wheel.



FFC5D4



E4D3A9



A0E1D4



BDD6FF

Rectangle

The Rectangle color scheme consists of four colors that form a rectangle on the color wheel.



FFC5D4



FBCAB3



A0E1D4



9EDEF5

Sweetspot

The Sweet Spot groups the original color and five complimentary colors.



FFC5D4



FFEDF2



F0C5FF



807578



000000



808080

Same Dimension

The Same Dimension uses a secret algorithm to generate beautiful new colors.



FFC5D4



FFBACC



FFD3C5



807376



BF0031



400010

Inverse Universe

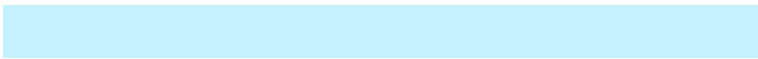
The Inverse Universe completely reimagines the original color for something new.



FFC5D4



FFBACC



C5F1FF



807376



BF0031



400010

Previews

White Background



This preview shows how the Hex color FFC5D4 looks on a white background.

Color Contrast Check

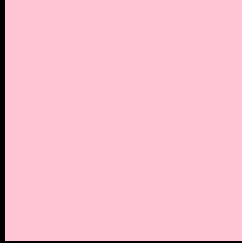
Large Text (above 18pt) WCAG AA × Fail

Any Text WCAG AA × Fail

Large Text (above 18pt) WCAG AAA × Fail

Any Text WCAG AAA × Fail

Black Background



This preview shows how the Hex color FFC5D4 looks on a black background.

Color Contrast Check

Large Text (above 18pt) WCAG AA ✓ Pass

Any Text WCAG AA ✓ Pass

Large Text (above 18pt) WCAG AAA ✓ Pass

Any Text WCAG AAA ✓ Pass

If you want to check with other color combinations, try the [Color Contrast Checker](#).

Hex FFC5D4 Background



This preview shows how black text looks on a background with the Hex color FFC5D4.



This preview shows how white text looks on a background with the Hex color FFC5D4.

Color Blindness Simulation

Color vision deficiency is a very complex topic, and I could not describe the different causes any better than Wikipedia does, so if you want to learn more, you should check out their [article about color blindness](#).

Dichromacy



Original Color
FFC5D4

Protanopia
D6D3DC

Deuteranopia
EACED2

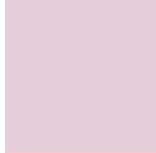


Tritanopia
FFC5D4

Trichromacy



Original Color
FFC5D4



Protanomaly
E5CED9



Deuteranomaly
F2CBD3

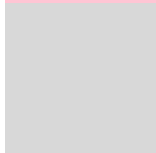


Tritanomaly
FFC5D4

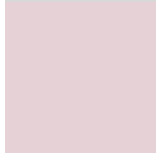
Monochromacy



Original Color
FFC5D4



Achromatopsia
D8D8D8



Achromatomaly
E6D1D7

CSS Examples

Text

The CSS property to change the color of the text to Hex FFC5D4 is called "color". The color property can be set on classes, ids or directly on the HTML element.

This example shows how text in the color #FFC5D4 looks like.

```
.text, #text, p{  
    color:#FFC5D4  
}
```

If you want to add a text shadow in that color use the text-shadow property, you can generate a text shadow directly with our [CSS Text Shadow Generator](#).

Here you see how black text with a 4 pixel #FFC5D4 colored shadow looks like.

```
.shadow{ text-shadow: 4px 4px 2px #FFC5D4
}
```

Border

The CSS property to change the border of an element to Hex FFC5D4 is called "border". The border property can be set on classes, ids or directly on the HTML element.

This example shows the color as border, it can be applied via the CSS property "border" or "border-color".

```
.border, #border, table{ border:4px solid
#FFC5D4 }
```

If only the border color should be changed use the property `border-color`.

```
.border{ border-color:#FFC5D4 }
```

If you want to add a box shadow in that color use:

Here you see how a box with a 4 pixel #FFC5D4 colored shadow looks like.

```
.boxshadow{ -moz-box-shadow:4px 4px 4px  
4px #FFC5D4; -webkit-box-shadow:4px 4px  
4px 4px #FFC5D4; box-shadow:4px 4px 4px  
4px #FFC5D4 }
```

Background

The CSS property to change the background color of an element to Hex FFC5D4 is called "background". The background property can be set on classes, ids or directly on the HTML element.

```
.background, #background, body{  
background:#FFC5D4 }
```

If only the background color should be changed can be used:

```
.background{ background-color:#FFC5D4 }
```

This example shows the color as background, it is applied via the CSS property "background".

To optimize and compress your CSS code, you can use our [online CSS compressor and optimizer](#) based on csstidy. If you want to create a linear or radial gradient as background or border, check our [CSS Gradient Generator](#).

Hey! You found this booklet interesting? Support Converting Colors with the new Membership Option!

The pro membership hides all ads, plus gives you double the colors in the color bucket, and more awesome pro features!

[Learn more, Memberships starting at \\$2.50/m!](#)

**Follow me
on Twitter!**

@ConvertingColor