

Converting Colors

Hex(FFC5D5)

Have a look what the booklet for
Hex(FFC5D5) contains.

Hex(FFC5D5)	3
<i>Conversions</i>	4
<i>Details</i>	6
<i>Harmonies</i>	11
<i>Previews</i>	23
<i>Color Blindness Simulation</i>	26
<i>CSS Examples</i>	29

Color

Hex(FFC5D5)

Conversions

Conversions Part 1

Format	Color
Hex	FFC5D5
RGB	255, 197, 213
RGB Percent	100%, 77%, 84%
CMY	0.0000, 0.2275, 0.1647
CMYK	0.00, 0.23, 0.16, 0.00
HSL	343°, 100%, 89%
HSV	343°, 23%, 100%
XYZ	73.2165, 65.9966, 71.8305
YIQ	216.1660, 29.4320, 17.2720

Conversions

Conversions Part 2

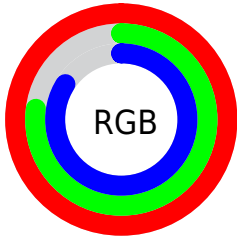
Format	Color
R _Y B	255, 197, 213
Decimal	16762325
CIE Lab	84.99, 23.02, 0.02
CIE LCh	85, 23.024, 0.057
Yxy	65.9966, 0.3469, 0.3127
Android (android.graphics.Color)	4294952405 (0xFFFFC5D5)
YUV	216.1660, -1.5608, 34.0574
Hunter-Lab	81.2383, 18.7072, 4.4429

Details

The Hex color **FFC5D5** is a light color, and the websafe version is hex **FFCCCC**. A complement of this color would be **C5FFEF**, and the grayscale version is **D8D8D8**.

A 20% lighter version of the original color is **FFFEFF**, and **C68F9E** is the 20% darker color. If you saturate the color by 10%, you get **FFACC3**, and if you desaturate by 10%, it is **FFDFE7**.

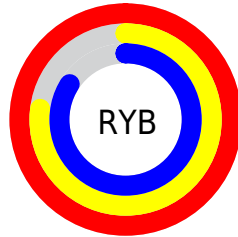
Distribution



Red (100%)

Green (77%)

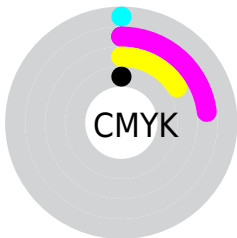
Blue (84%)



Red (100%)

Yellow (77%)

Blue (84%)

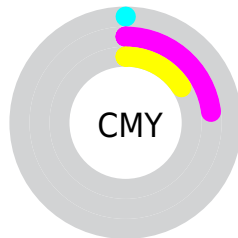


Cyan (0%)

Magenta (23%)

Yellow (16%)

Black (0%)



Cyan (0%)

Magenta (23%)

Yellow (16%)

Brightness & Saturation Gradients

These gradients show how the Hex color FFC5D5 changes by changing the brightness by 10 percent. The first figure shows a shift by +10% for each color and the second figure -10%.

Similar to the brightness gradients but the following saturation gradients show a change of the Hex color FFC5D5 by changing the saturation by 10% instead.

 FFC5D5

 FFC5D5

FFFFFF

 E2AAB9

FFFEFF

 C68F9E

 AA7584

 8F5C6B

 744453

 5B2D3C

 421726

 2B0012

 040000

 FFC5D5

 FFC5D5

 FFACC3

 FFDFE7

 FF92B0

 FFF8FA

 FF799E

FFFFFF

 FF5F8B

 FF4579

 FF2C66

 FF1254

 FF0046

Harmonies

Analogous

The Analogous color harmony consists of three colors that are next to each other on the color wheel.



F1C8EA



FFC5D5



FFC6BF

Triad

The Triadic color harmony groups three colors that are evenly spaced from another and form a triangle on the color wheel.



FFC5D5



CDDAAE



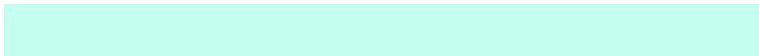
A3DCF9

Complementary

The Complementary color scheme is a pair of colors which are on the opposite of each other on the color wheel.



FFC5D5



C5FFEF

Split Complementary

Split-complementary colors differ from the complementary color scheme. The scheme consists of three colors, the original color and two neighbors of the complement color.



99E0E9



FFC5D5



B5DFBE

Square

The Square scheme is like the rectangle color scheme, but the four colors are evenly spaced on the color wheel.



FFC5D5



E5D3A9



A1E1D4



BBD6FF

Rectangle

The Rectangle color scheme consists of four colors that form a rectangle on the color wheel.



FFC5D5



FCCAB4



A1E1D4



9DDEF5

Sweetspot

The Sweet Spot groups the original color and five complimentary colors.



FFC5D5



FFEDF2



EFC5FF



807578



000000



808080

Same Dimension

The Same Dimension uses a secret algorithm to generate beautiful new colors.



FFC5D5



FFBACD



FFD2C5



807376



BF0035



400012

Inverse Universe

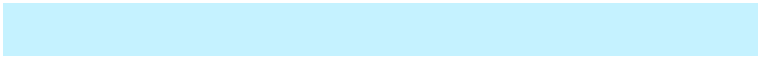
The Inverse Universe completely reimagines the original color for something new.



FFC5D5



FFBACD



C5F2FF



807376



BF0035



400012

Previews

White Background



This preview shows how the Hex color FFC5D5 looks on a white background.

Color Contrast Check

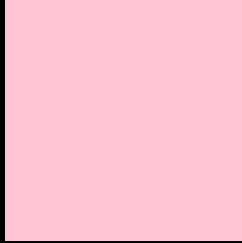
Large Text (above 18pt) WCAG AA × Fail

Any Text WCAG AA × Fail

Large Text (above 18pt) WCAG AAA × Fail

Any Text WCAG AAA × Fail

Black Background



This preview shows how the Hex color FFC5D5 looks on a black background.

Color Contrast Check

Large Text (above 18pt) WCAG AA ✓ Pass

Any Text WCAG AA ✓ Pass

Large Text (above 18pt) WCAG AAA ✓ Pass

Any Text WCAG AAA ✓ Pass

If you want to check with other color combinations, try the [Color Contrast Checker](#).

Hex FFC5D5 Background



This preview shows how black text looks on a background with the Hex color FFC5D5.

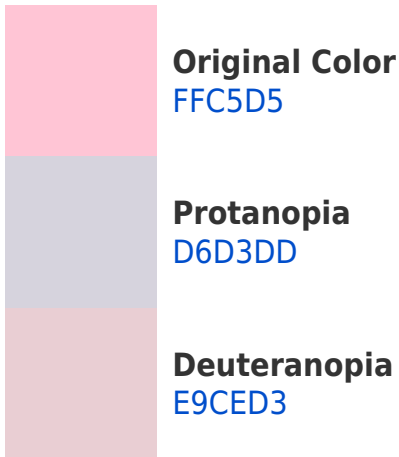


This preview shows how white text looks on a background with the Hex color FFC5D5.

Color Blindness Simulation

Color vision deficiency is a very complex topic, and I could not describe the different causes any better than Wikipedia does, so if you want to learn more, you should check out their [article about color blindness](#).

Dichromacy



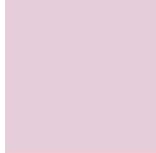


Tritanopia
FFC5D4

Trichromacy



Original Color
FFC5D5



Protanomaly
E5CEDA



Deuteranomaly
F1CBD4

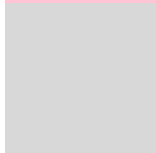


Tritanomaly
FFC5D4

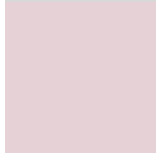
Monochromacy



Original Color
FFC5D5



Achromatopsia
D8D8D8



Achromatomaly
E6D1D7

CSS Examples

Text

The CSS property to change the color of the text to Hex FFC5D5 is called "color". The color property can be set on classes, ids or directly on the HTML element.

This example shows how text in the color #FFC5D5 looks like.

```
.text, #text, p{  
    color:#FFC5D5  
}
```

If you want to add a text shadow in that color use the text-shadow property, you can generate a text shadow directly with our [CSS Text Shadow Generator](#).

Here you see how black text with a 4 pixel #FFC5D5 colored shadow looks like.

```
.shadow{ text-shadow: 4px 4px 2px #FFC5D5  
}
```

Border

The CSS property to change the border of an element to Hex FFC5D5 is called "border". The border property can be set on classes, ids or directly on the HTML element.

This example shows the color as border, it can be applied via the CSS property "border" or "border-color".

```
.border, #border, table{ border:4px solid  
#FFC5D5 }
```

If only the border color should be changed use the property `border-color`.

```
.border{ border-color:#FFC5D5 }
```

If you want to add a box shadow in that color use:

Here you see how a box with a 4 pixel #FFC5D5 colored shadow looks like.

```
.boxshadow{ -moz-box-shadow:4px 4px 4px  
4px #FFC5D5; -webkit-box-shadow:4px 4px  
4px 4px #FFC5D5; box-shadow:4px 4px 4px  
4px #FFC5D5 }
```

Background

The CSS property to change the background color of an element to Hex FFC5D5 is called "background". The background property can be set on classes, ids or directly on the HTML element.

```
.background, #background, body{  
background:#FFC5D5 }
```

If only the background color should be changed can be used:

```
.background{ background-color:#FFC5D5 }
```

This example shows the color as background, it is applied via the CSS property "background".

To optimize and compress your CSS code, you can use our [online CSS compressor and optimizer](#) based on csstidy. If you want to create a linear or radial gradient as background or border, check our [CSS Gradient Generator](#).

Hey! You found this booklet interesting? Support Converting Colors with the new Membership Option!

The pro membership hides all ads, plus gives you double the colors in the color bucket, and more awesome pro features!

[Learn more, Memberships starting at \\$2.50/m!](#)

**Follow me
on Twitter!**

@ConvertingColor