

Converting Colors

Hex(FFC5D7)

Have a look what the booklet for
Hex(FFC5D7) contains.

Hex(FFC5D7)	3
<i>Conversions</i>	4
<i>Details</i>	6
<i>Harmonies</i>	11
<i>Previews</i>	23
<i>Color Blindness Simulation</i>	26
<i>CSS Examples</i>	29

Color

Hex(FFC5D7)

Conversions

Conversions Part 1

Format	Color
Hex	FFC5D7
RGB	255, 197, 215
RGB Percent	100%, 77%, 84%
CMY	0.0000, 0.2275, 0.1569
CMYK	0.00, 0.23, 0.16, 0.00
HSL	341°, 100%, 89%
HSV	341°, 23%, 100%
XYZ	73.4720, 66.0988, 73.1759
YIQ	216.3940, 28.7900, 17.8940

Conversions

Conversions Part 2

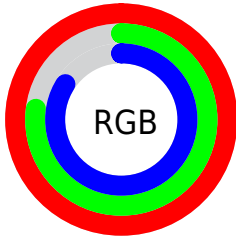
Format	Color
R_{YB}	255, 197, 215
Decimal	16762327
CIE _{Lab}	85.05, 23.33, -0.97
CIE _{LCh}	85, 23.352, 357.626
Yxy	66.0988, 0.3453, 0.3107
Android (android.graphics.Color)	4294952407 (0xFFFFC5D7)
YUV	216.3940, -0.6872, 33.8575
Hunter-Lab	81.3012, 19.0337, 3.5463

Details

The Hex color **FFC5D7** is a light color, and the websafe version is hex **FFCCCC**. A complement of this color would be **C5FFED**, and the grayscale version is **D8D8D8**.

A 20% lighter version of the original color is **FFFEFF**, and **C68FA0** is the 20% darker color. If you saturate the color by 10%, you get **FFACC5**, and if you desaturate by 10%, it is **FFDFE9**.

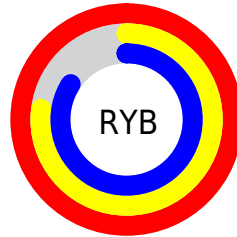
Distribution



Red (100%)

Green (77%)

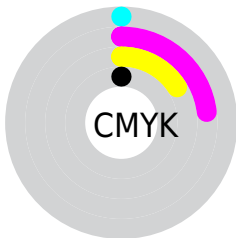
Blue (84%)



Red (100%)

Yellow (77%)

Blue (84%)

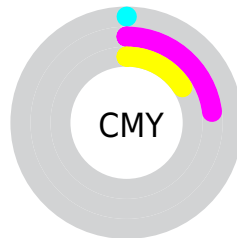


Cyan (0%)

Magenta (23%)

Yellow (16%)

Black (0%)



Cyan (0%)

Magenta (23%)

Yellow (16%)

Brightness & Saturation Gradients

These gradients show how the Hex color FFC5D7 changes by changing the brightness by 10 percent. The first figure shows a shift by +10% for each color and the second figure -10%.

Similar to the brightness gradients but the following saturation gradients show a change of the Hex color FFC5D7 by changing the saturation by 10% instead.

 FFC5D7

 FFC5D7

FFFFFF

 E2AABB

FFFEFF

 C68FA0

 AA7586

 8F5C6D

 754455

 5B2D3E

 421628

 2B0013

 050000

 FFC5D7

 FFC5D7

 FFACC5

 FFDFE9

 FF92B4

 FFF8FA

 FF79A2

FFFFFF

 FF5F91

 FF457F

 FF2C6D

 FF125C

 FF004F

Harmonies

Analogous

The Analogous color harmony consists of three colors that are next to each other on the color wheel.



F0C9EC



FFC5D7



FFC6C1

Triad

The Triadic color harmony groups three colors that are evenly spaced from another and form a triangle on the color wheel.



FFC5D7



CFD9AD



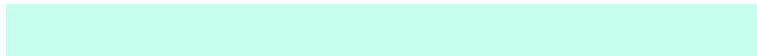
A1DDF9

Complementary

The Complementary color scheme is a pair of colors which are on the opposite of each other on the color wheel.



FFC5D7



C5FFED

Split Complementary

Split-complementary colors differ from the complementary color scheme. The scheme consists of three colors, the original color and two neighbors of the complement color.



98E1E8



FFC5D7



B6DEBC

Square

The Square scheme is like the rectangle color scheme, but the four colors are evenly spaced on the color wheel.



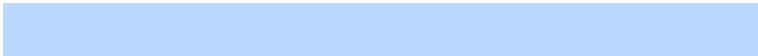
FFC5D7



E7D2A9



A1E1D2



B9D7FF

Rectangle

The Rectangle color scheme consists of four colors that form a rectangle on the color wheel.



FFC5D7



FDC9B5



A1E1D2



9CDFF4

Sweetspot

The Sweet Spot groups the original color and five complimentary colors.



FFC5D7



FFEDF3



EDC5FF



807578



000000



808080

Same Dimension

The Same Dimension uses a secret algorithm to generate beautiful new colors.



FFC5D7



FFBAD0



FFD0C5



807377



BF003B



400014

Inverse Universe

The Inverse Universe completely reimagines the original color for something new.



FFC5D7



FFBAD0



C5F4FF



807377



BF003B



400014

Previews

White Background



This preview shows how the Hex color FFC5D7 looks on a white background.

Color Contrast Check

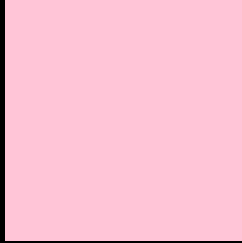
Large Text (above 18pt) WCAG AA × Fail

Any Text WCAG AA × Fail

Large Text (above 18pt) WCAG AAA × Fail

Any Text WCAG AAA × Fail

Black Background



This preview shows how the Hex color FFC5D7 looks on a black background.

Color Contrast Check

Large Text (above 18pt) WCAG AA ✓ Pass

Any Text WCAG AA ✓ Pass

Large Text (above 18pt) WCAG AAA ✓ Pass

Any Text WCAG AAA ✓ Pass

If you want to check with other color combinations, try the [Color Contrast Checker](#).

Hex FFC5D7 Background



This preview shows how black text looks on a background with the Hex color FFC5D7.

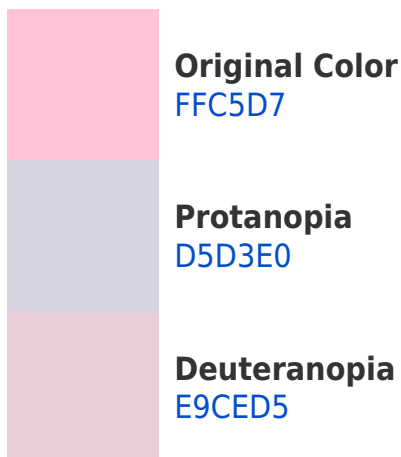


This preview shows how white text looks on a background with the Hex color FFC5D7.

Color Blindness Simulation

Color vision deficiency is a very complex topic, and I could not describe the different causes any better than Wikipedia does, so if you want to learn more, you should check out their [article about color blindness](#).

Dichromacy



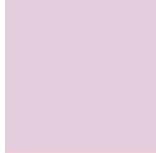


Tritanopia
FFC5D5

Trichromacy



Original Color
FFC5D7



Protanomaly
E4CEDD



Deuteranomaly
F1CBD6

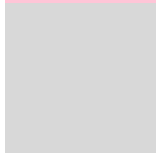


Tritanomaly
FFC5D6

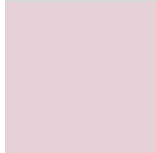
Monochromacy



Original Color
FFC5D7



Achromatopsia
D8D8D8



Achromatomaly
E6D1D8

CSS Examples

Text

The CSS property to change the color of the text to Hex FFC5D7 is called "color". The color property can be set on classes, ids or directly on the HTML element.

This example shows how text in the color #FFC5D7 looks like.

```
.text, #text, p{  
    color:#FFC5D7  
}
```

If you want to add a text shadow in that color use the text-shadow property, you can generate a text shadow directly with our [CSS Text Shadow Generator](#).

Here you see how black text with a 4 pixel #FFC5D7 colored shadow looks like.

```
.shadow{ text-shadow: 4px 4px 2px #FFC5D7
}
```

Border

The CSS property to change the border of an element to Hex FFC5D7 is called "border". The border property can be set on classes, ids or directly on the HTML element.

This example shows the color as border, it can be applied via the CSS property "border" or "border-color".

```
.border, #border, table{ border:4px solid
#FFC5D7 }
```

If only the border color should be changed use the property `border-color`.

```
.border{ border-color:#FFC5D7 }
```

If you want to add a box shadow in that color use:

Here you see how a box with a 4 pixel #FFC5D7 colored shadow looks like.

```
.boxshadow{ -moz-box-shadow:4px 4px 4px  
4px #FFC5D7; -webkit-box-shadow:4px 4px  
4px 4px #FFC5D7; box-shadow:4px 4px 4px  
4px #FFC5D7 }
```

Background

The CSS property to change the background color of an element to Hex FFC5D7 is called "background". The background property can be set on classes, ids or directly on the HTML element.

```
.background, #background, body{  
background:#FFC5D7 }
```

If only the background color should be changed can be used:

```
.background{ background-color:#FFC5D7 }
```

This example shows the color as background, it is applied via the CSS property "background".

To optimize and compress your CSS code, you can use our [online CSS compressor and optimizer](#) based on csstidy. If you want to create a linear or radial gradient as background or border, check our [CSS Gradient Generator](#).

Hey! You found this booklet interesting? Support Converting Colors with the new Membership Option!

The pro membership hides all ads, plus gives you double the colors in the color bucket, and more awesome pro features!

[Learn more, Memberships starting at \\$2.50/m!](#)

**Follow me
on Twitter!**

@ConvertingColor