

Converting Colors

Hex(FFC6D2)

Have a look what the booklet for
Hex(FFC6D2) contains.

Hex(FFC6D2)	3
<i>Conversions</i>	4
<i>Details</i>	6
<i>Harmonies</i>	11
<i>Previews</i>	23
<i>Color Blindness Simulation</i>	26
<i>CSS Examples</i>	29

Color

Hex(FFC6D2)

Conversions

Conversions Part 1

Format	Color
Hex	FFC6D2
RGB	255, 198, 210
RGB Percent	100%, 78%, 82%
CMY	0.0000, 0.2235, 0.1765
CMYK	0.00, 0.22, 0.18, 0.00
HSL	347°, 100%, 89%
HSV	347°, 22%, 100%
XYZ	73.0669, 66.3013, 69.9192
YIQ	216.4110, 30.1200, 15.8160

Conversions

Conversions Part 2

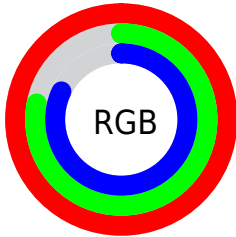
Format	Color
R _Y B	255, 198, 210
Decimal	16762578
CIE Lab	85.15, 22.04, 1.85
CIE LCh	85, 22.120, 4.794
Yxy	66.3013, 0.3491, 0.3168
Android (android.graphics.Color)	4294952658 (0xFFFFC6D2)
YUV	216.4110, -3.1606, 33.8426
Hunter-Lab	81.4256, 17.6814, 6.0864

Details

The Hex color **FFC6D2** is a light color, and the websafe version is hex **FFCCCC**. A complement of this color would be **C6FFF3**, and the grayscale version is **D8D8D8**.

A 20% lighter version of the original color is **FFFFFF**, and **C6909C** is the 20% darker color. If you saturate the color by 10%, you get **FFADBE**, and if you desaturate by 10%, it is **FFE0E6**.

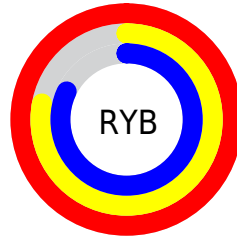
Distribution



Red (100%)

Green (78%)

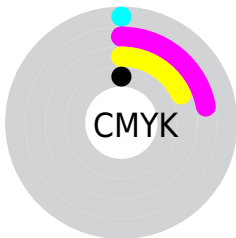
Blue (82%)



Red (100%)

Yellow (78%)

Blue (82%)

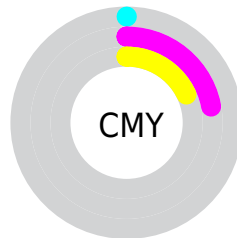


Cyan (0%)

Magenta (22%)

Yellow (18%)

Black (0%)



Cyan (0%)

Magenta (22%)

Yellow (18%)

Brightness & Saturation Gradients

These gradients show how the Hex color FFC6D2 changes by changing the brightness by 10 percent. The first figure shows a shift by +10% for each color and the second figure -10%.

Similar to the brightness gradients but the following saturation gradients show a change of the Hex color FFC6D2 by changing the saturation by 10% instead.

 FFC6D2

 FFC6D2

FFFFFF

 E2ABB6

 C6909C

 AA7682

 8F5D69

 744550

 5B2E3A

 421824

 2B010F

 030000

 FFC6D2

 FFC6D2

 FFADBE

 FFE0E6

 FF93AA

 FFF9FA

 FF7A96

FFFFFF

 FF6081

 FF476D

 FF2D59

 FF1445

 FF0036

Harmonies

Analogous

The Analogous color harmony consists of three colors that are next to each other on the color wheel.



F3C8E7



FFC6D2



FFC8BE

Triad

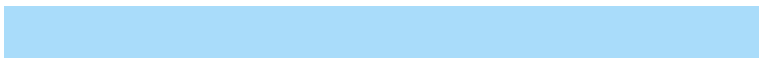
The Triadic color harmony groups three colors that are evenly spaced from another and form a triangle on the color wheel.



FFC6D2



CADBB2



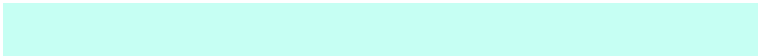
A9DCFA

Complementary

The Complementary color scheme is a pair of colors which are on the opposite of each other on the color wheel.



FFC6D2



C6FFF3

Split Complementary

Split-complementary colors differ from the complementary color scheme. The scheme consists of three colors, the original color and two neighbors of the complement color.



9CE0EC



FFC6D2



B3DFC2

Square

The Square scheme is like the rectangle color scheme, but the four colors are evenly spaced on the color wheel.



FFC6D2



E2D4AB



A1E1D7



C1D5FE

Rectangle

The Rectangle color scheme consists of four colors that form a rectangle on the color wheel.



FFC6D2



F9CBB3



A1E1D7



A3DDF6

Sweetspot

The Sweet Spot groups the original color and five complimentary colors.



FFC6D2



FFEDF1



F3C6FF



807577



000000



808080

Same Dimension

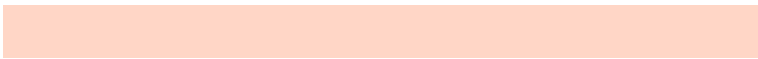
The Same Dimension uses a secret algorithm to generate beautiful new colors.



FFC6D2



FFBAC9



FFD6C6



807375



BF0028



40000D

Inverse Universe

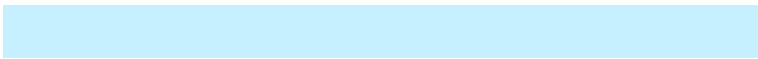
The Inverse Universe completely reimagines the original color for something new.



FFC6D2



FFBAC9



C6EFFF



807375



BF0028



40000D

Previews

White Background



This preview shows how the Hex color FFC6D2 looks on a white background.

Color Contrast Check

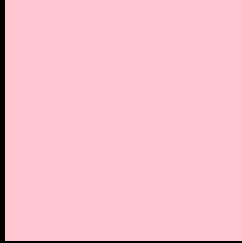
Large Text (above 18pt) WCAG AA × Fail

Any Text WCAG AA × Fail

Large Text (above 18pt) WCAG AAA × Fail

Any Text WCAG AAA × Fail

Black Background



This preview shows how the Hex color FFC6D2 looks on a black background.

Color Contrast Check

Large Text (above 18pt) WCAG AA ✓ Pass

Any Text WCAG AA ✓ Pass

Large Text (above 18pt) WCAG AAA ✓ Pass

Any Text WCAG AAA ✓ Pass

If you want to check with other color combinations, try the [Color Contrast Checker](#).

Hex FFC6D2 Background



This preview shows how black text looks on a background with the Hex color FFC6D2.

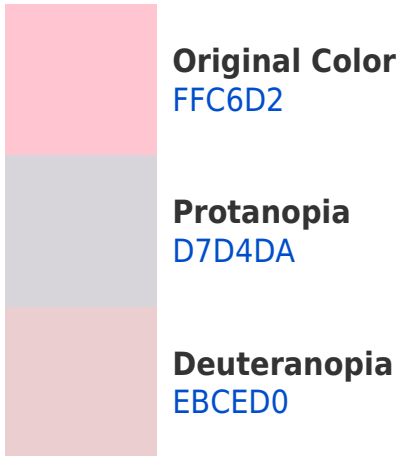


This preview shows how white text looks on a background with the Hex color FFC6D2.

Color Blindness Simulation

Color vision deficiency is a very complex topic, and I could not describe the different causes any better than Wikipedia does, so if you want to learn more, you should check out their [article about color blindness](#).

Dichromacy



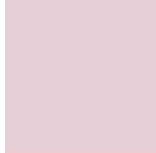


Tritanopia
FFC6D5

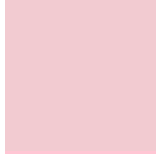
Trichromacy



Original Color
FFC6D2



Protanomaly
E6CFD7



Deuteranomaly
F2CBD1

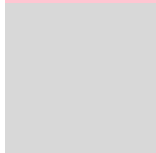


Tritanomaly
FFC6D4

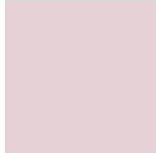
Monochromacy



Original Color
FFC6D2



Achromatopsia
D8D8D8



Achromatomaly
E6D1D6

CSS Examples

Text

The CSS property to change the color of the text to Hex FFC6D2 is called "color". The color property can be set on classes, ids or directly on the HTML element.

This example shows how text in the color #FFC6D2 looks like.

```
.text, #text, p{  
    color:#FFC6D2  
}
```

If you want to add a text shadow in that color use the text-shadow property, you can generate a text shadow directly with our [CSS Text Shadow Generator](#).

Here you see how black text with a 4 pixel #FFC6D2 colored shadow looks like.

```
.shadow{ text-shadow: 4px 4px 2px #FFC6D2
}
```

Border

The CSS property to change the border of an element to Hex FFC6D2 is called "border". The border property can be set on classes, ids or directly on the HTML element.

This example shows the color as border, it can be applied via the CSS property "border" or "border-color".

```
.border, #border, table{ border:4px solid
#FFC6D2 }
```

If only the border color should be changed use the property `border-color`.

```
.border{ border-color:#FFC6D2 }
```

If you want to add a box shadow in that color use:

Here you see how a box with a 4 pixel #FFC6D2 colored shadow looks like.

```
.boxshadow{ -moz-box-shadow:4px 4px 4px  
4px #FFC6D2; -webkit-box-shadow:4px 4px  
4px 4px #FFC6D2; box-shadow:4px 4px 4px  
4px #FFC6D2 }
```

Background

The CSS property to change the background color of an element to Hex FFC6D2 is called "background". The background property can be set on classes, ids or directly on the HTML element.

```
.background, #background, body{  
background:#FFC6D2 }
```

If only the background color should be changed can be used:

```
.background{ background-color:#FFC6D2 }
```

This example shows the color as background, it is applied via the CSS property "background".

To optimize and compress your CSS code, you can use our [online CSS compressor and optimizer](#) based on csstidy. If you want to create a linear or radial gradient as background or border, check our [CSS Gradient Generator](#).

Hey! You found this booklet interesting? Support Converting Colors with the new Membership Option!

The pro membership hides all ads, plus gives you double the colors in the color bucket, and more awesome pro features!

[Learn more, Memberships starting at \\$2.50/m!](#)

**Follow me
on Twitter!**

@ConvertingColor