

Converting Colors

Hex(FFC8CC)

Have a look what the booklet for
Hex(FFC8CC) contains.

Hex(FFC8CC)	3
<i>Conversions</i>	4
<i>Details</i>	6
<i>Harmonies</i>	11
<i>Previews</i>	23
<i>Color Blindness Simulation</i>	26
<i>CSS Examples</i>	29

Color

Hex(FFC8CC)

Conversions

Conversions Part 1

Format	Color
Hex	FFC8CC
RGB	255, 200, 204
RGB Percent	100%, 78%, 80%
CMY	0.0000, 0.2157, 0.2000
CMYK	0.00, 0.22, 0.20, 0.00
HSL	356°, 100%, 89%
HSV	356°, 22%, 100%
XYZ	72.7934, 66.9282, 66.2085
YIQ	216.9010, 31.4960, 12.9040

Conversions

Conversions Part 2

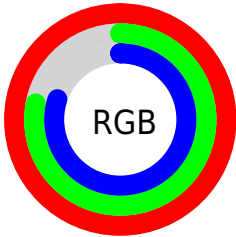
Format	Color
R _Y B	255, 200, 204
Decimal	16763084
CIE Lab	85.47, 20.10, 5.50
CIE LCh	85, 20.841, 15.315
Yxy	66.9282, 0.3535, 0.3250
Android (android.graphics.Color)	4294953164 (0xFFFFC8CC)
YUV	216.9010, -6.3602, 33.4128
Hunter-Lab	81.8096, 15.6605, 9.2834

Details

The Hex color **FFC8CC** is a light color, and the websafe version is hex **FFCCCC**. A complement of this color would be **C8FFFB**, and the grayscale version is **D9D9D9**.

A 20% lighter version of the original color is **FFFFFF**, and **C69296** is the 20% darker color. If you saturate the color by 10%, you get **FFAFB4**, and if you desaturate by 10%, it is **FFE2E4**.

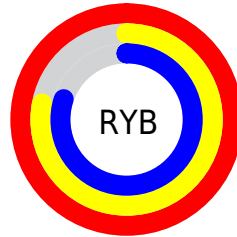
Distribution



Red (100%)

Green (78%)

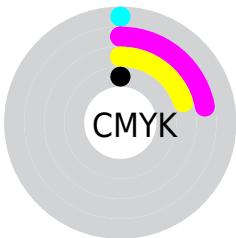
Blue (80%)



Red (100%)

Yellow (78%)

Blue (80%)

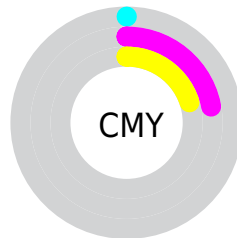


Cyan (0%)

Magenta (22%)

Yellow (20%)

Black (0%)



Cyan (0%)

Magenta (22%)

Yellow (20%)

Brightness & Saturation Gradients

These gradients show how the Hex color FFC8CC changes by changing the brightness by 10 percent. The first figure shows a shift by +10% for each color and the second figure -10%.

Similar to the brightness gradients but the following saturation gradients show a change of the Hex color FFC8CC by changing the saturation by 10% instead.

 FFC8CC

FFFFFF

 FFC8CC

 E2ADB1

 C69296

 AA787C

 8F5F63

 74474B

 5B3035

 421A20

 2B0307

 010000

 FFC8CC

 FFC8CC

 FFAFB4

 FFE2E4

 FF959D

 FFFBFB

 FF7B85

FFFFFF

 FF626D

 FF4956

 FF2F3E

 FF1626

 FF0013

Harmonies

Analogous

The Analogous color harmony consists of three colors that are next to each other on the color wheel.



F7C9E0



FFC8CC



FBCBBA

Triad

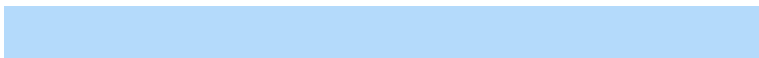
The Triadic color harmony groups three colors that are evenly spaced from another and form a triangle on the color wheel.



FFC8CC



C4DDB9



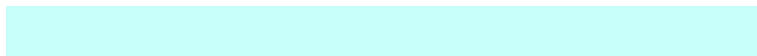
B4DAFB

Complementary

The Complementary color scheme is a pair of colors which are on the opposite of each other on the color wheel.



FFC8CC



C8FFFB

Split Complementary

Split-complementary colors differ from the complementary color scheme. The scheme consists of three colors, the original color and two neighbors of the complement color.



A3DFF1



FFC8CC



AFE0CB

Square

The Square scheme is like the rectangle color scheme, but the four colors are evenly spaced on the color wheel.



FFC8CC



DAD7B0



A2E1DF



CDD4FB

Rectangle

The Rectangle color scheme consists of four colors that form a rectangle on the color wheel.



FFC8CC



F4CFB2



A2E1DF



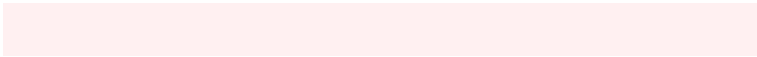
ADD9F9

Sweetspot

The Sweet Spot groups the original color and five complimentary colors.



FFC8CC



FFF0F1



FAC8FF



807777



000000



808080

Same Dimension

The Same Dimension uses a secret algorithm to generate beautiful new colors.



FFC8CC



FFBDC2



FFDFC8



807374



BF000E



400005

Inverse Universe

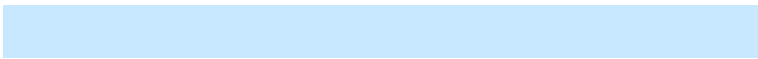
The Inverse Universe completely reimagines the original color for something new.



FFC8CC



FFBDC2



C8E8FF



807374



BF000E



400005

Previews

White Background



This preview shows how the Hex color FFC8CC looks on a white background.

Color Contrast Check

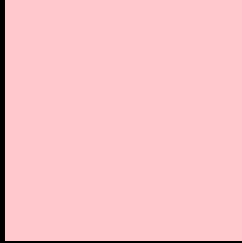
Large Text (above 18pt) WCAG AA × Fail

Any Text WCAG AA × Fail

Large Text (above 18pt) WCAG AAA × Fail

Any Text WCAG AAA × Fail

Black Background



This preview shows how the Hex color FFC8CC looks on a black background.

Color Contrast Check

Large Text (above 18pt) WCAG AA ✓ Pass

Any Text WCAG AA ✓ Pass

Large Text (above 18pt) WCAG AAA ✓ Pass

Any Text WCAG AAA ✓ Pass

If you want to check with other color combinations, try the [Color Contrast Checker](#).

Hex FFC8CC Background



This preview shows how black text looks on a background with the Hex color FFC8CC.

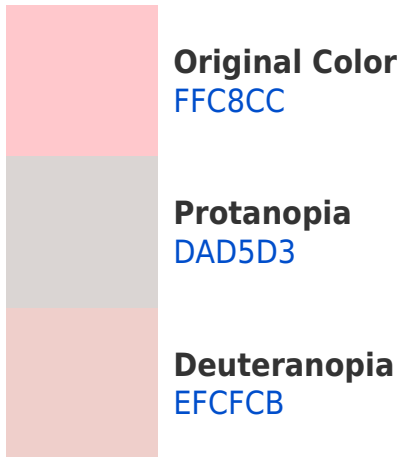


This preview shows how white text looks on a background with the Hex color FFC8CC.

Color Blindness Simulation

Color vision deficiency is a very complex topic, and I could not describe the different causes any better than Wikipedia does, so if you want to learn more, you should check out their [article about color blindness](#).

Dichromacy



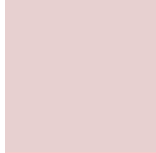


Tritanopia
FFC7D6

Trichromacy



Original Color
FFC8CC



Protanomaly
E7D0D0



Deuteranomaly
F5CCCB

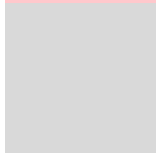


Tritanomaly
FFC7D2

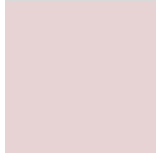
Monochromacy



Original Color
FFC8CC



Achromatopsia
D9D9D9



Achromatomaly
E7D3D4

CSS Examples

Text

The CSS property to change the color of the text to Hex FFC8CC is called "color". The color property can be set on classes, ids or directly on the HTML element.

This example shows how text in the color #FFC8CC looks like.

```
.text, #text, p{  
    color:#FFC8CC  
}
```

If you want to add a text shadow in that color use the text-shadow property, you can generate a text shadow directly with our [CSS Text Shadow Generator](#).

Here you see how black text with a 4 pixel #FFC8CC colored shadow looks like.

```
.shadow{ text-shadow: 4px 4px 2px #FFC8CC
}
```

Border

The CSS property to change the border of an element to Hex FFC8CC is called "border". The border property can be set on classes, ids or directly on the HTML element.

This example shows the color as border, it can be applied via the CSS property "border" or "border-color".

```
.border, #border, table{ border:4px solid
#FFC8CC }
```

If only the border color should be changed use the property `border-color`.

```
.border{ border-color:#FFC8CC }
```

If you want to add a box shadow in that color use:

Here you see how a box with a 4 pixel #FFC8CC colored shadow looks like.

```
.boxshadow{ -moz-box-shadow:4px 4px 4px  
4px #FFC8CC; -webkit-box-shadow:4px 4px  
4px 4px #FFC8CC; box-shadow:4px 4px 4px  
4px #FFC8CC }
```

Background

The CSS property to change the background color of an element to Hex FFC8CC is called "background". The background property can be set on classes, ids or directly on the HTML element.

```
.background, #background, body{  
background:#FFC8CC }
```

If only the background color should be changed can be used:

```
.background{ background-color:#FFC8CC }
```

This example shows the color as background, it is applied via the CSS property "background".

To optimize and compress your CSS code, you can use our [online CSS compressor and optimizer](#) based on csstidy. If you want to create a linear or radial gradient as background or border, check our [CSS Gradient Generator](#).

Hey! You found this booklet interesting? Support Converting Colors with the new Membership Option!

The pro membership hides all ads, plus gives you double the colors in the color bucket, and more awesome pro features!

[Learn more, Memberships starting at \\$2.50/m!](#)

**Follow me
on Twitter!**

@ConvertingColor