

Converting Colors

Hex(FFC8D5)

Have a look what the booklet for
Hex(FFC8D5) contains.

Hex(FFC8D5)	3
<i>Conversions</i>	4
<i>Details</i>	6
<i>Harmonies</i>	11
<i>Previews</i>	23
<i>Color Blindness Simulation</i>	26
<i>CSS Examples</i>	29

Color

Hex(FFC8D5)

Conversions

Conversions Part 1

Format	Color
Hex	FFC8D5
RGB	255, 200, 213
RGB Percent	100%, 78%, 84%
CMY	0.0000, 0.2157, 0.1647
CMYK	0.00, 0.22, 0.16, 0.00
HSL	346°, 100%, 89%
HSV	346°, 22%, 100%
XYZ	73.9045, 67.3726, 72.0598
YIQ	217.9270, 28.6070, 15.7030

Conversions

Conversions Part 2

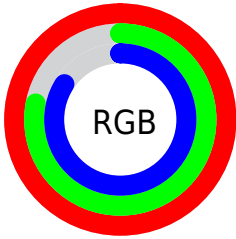
Format	Color
R_{YB}	255, 200, 213
Decimal	16763093
CIE _{Lab}	85.69, 21.45, 1.04
CIE _{LCh}	86, 21.476, 2.775
Yxy	67.3726, 0.3464, 0.3158
Android (android.graphics.Color)	4294953173 (0xFFFFC8D5)
YUV	217.9270, -2.4290, 32.5130
Hunter-Lab	82.0808, 17.0776, 5.4051

Details

The Hex color **FFC8D5** is a light color, and the websafe version is hex **FFCCCC**. A complement of this color would be **C8FFF2**, and the grayscale version is **DADADA**.

A 20% lighter version of the original color is **FFFFFF**, and **C6929E** is the 20% darker color. If you saturate the color by 10%, you get **FFAFC2**, and if you desaturate by 10%, it is **FFE2E8**.

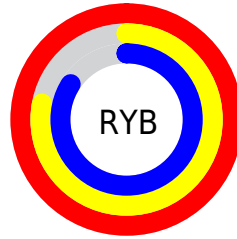
Distribution



Red (100%)

Green (78%)

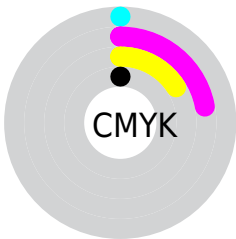
Blue (84%)



Red (100%)

Yellow (78%)

Blue (84%)

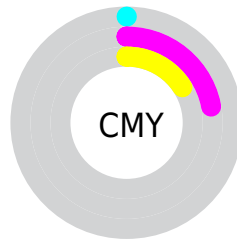


Cyan (0%)

Magenta (22%)

Yellow (16%)

Black (0%)



Cyan (0%)

Magenta (22%)

Yellow (16%)

Brightness & Saturation Gradients

These gradients show how the Hex color FFC8D5 changes by changing the brightness by 10 percent. The first figure shows a shift by +10% for each color and the second figure -10%.

Similar to the brightness gradients but the following saturation gradients show a change of the Hex color FFC8D5 by changing the saturation by 10% instead.

 FFC8D5

FFFFFF

 FFC8D5

 E2ADB9

 C6929E

 AA7884


 8F5F6B

 754753

 5B303C

 431A26

 2C0312

 080000

 FFC8D5

 FFC8D5

 FFAFC2

 FFE2E8

 FF95AE

 FFFBFC

 FF7B9B

FFFFFF

 FF6287

 FF4974

 FF2F60

 FF164D

 FF003C

Harmonies

Analogous

The Analogous color harmony consists of three colors that are next to each other on the color wheel.



F2CBE9



FFC8D5



FFCAC1

Triad

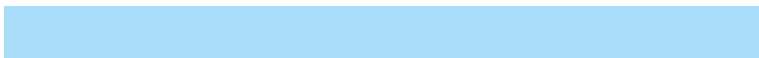
The Triadic color harmony groups three colors that are evenly spaced from another and form a triangle on the color wheel.



FFC8D5



CEDCB4



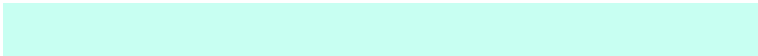
AADDFA

Complementary

The Complementary color scheme is a pair of colors which are on the opposite of each other on the color wheel.



FFC8D5



C8FFF2

Split Complementary

Split-complementary colors differ from the complementary color scheme. The scheme consists of three colors, the original color and two neighbors of the complement color.



A0E1EB



FFC8D5



B7E0C3

Square

The Square scheme is like the rectangle color scheme, but the four colors are evenly spaced on the color wheel.



FFC8D5



E4D5AE



A5E2D7



C2D7FE

Rectangle

The Rectangle color scheme consists of four colors that form a rectangle on the color wheel.



FFC8D5



FBCDB7



A5E2D7



A5DFF6

Sweetspot

The Sweet Spot groups the original color and five complimentary colors.



FFC8D5



FFF0F3



F1C8FF



807779



000000



808080

Same Dimension

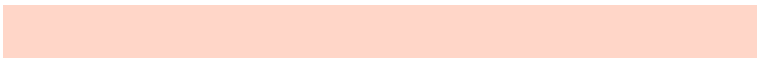
The Same Dimension uses a secret algorithm to generate beautiful new colors.



FFC8D5



FFBDCC



FFD6C8



807376



BF002D



40000F

Inverse Universe

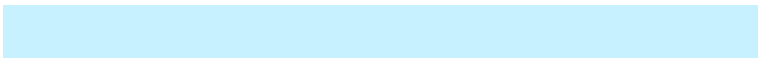
The Inverse Universe completely reimagines the original color for something new.



FFC8D5



FFBDCC



C8F1FF



807376



BF002D



40000F

Previews

White Background



This preview shows how the Hex color FFC8D5 looks on a white background.

Color Contrast Check

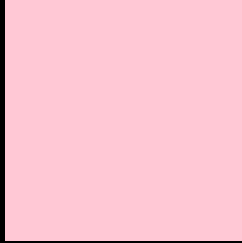
Large Text (above 18pt) WCAG AA × Fail

Any Text WCAG AA × Fail

Large Text (above 18pt) WCAG AAA × Fail

Any Text WCAG AAA × Fail

Black Background



This preview shows how the Hex color FFC8D5 looks on a black background.

Color Contrast Check

Large Text (above 18pt) WCAG AA ✓ Pass

Any Text WCAG AA ✓ Pass

Large Text (above 18pt) WCAG AAA ✓ Pass

Any Text WCAG AAA ✓ Pass

If you want to check with other color combinations, try the [Color Contrast Checker](#).

Hex FFC8D5 Background



This preview shows how black text looks on a background with the Hex color FFC8D5.

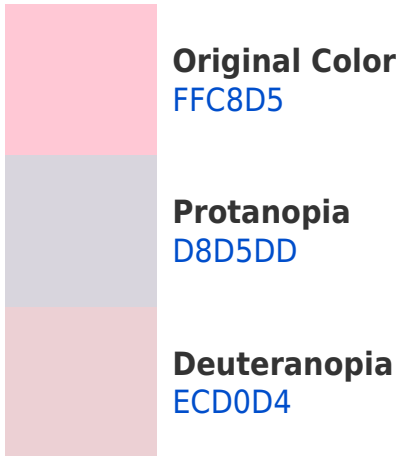


This preview shows how white text looks on a background with the Hex color FFC8D5.

Color Blindness Simulation

Color vision deficiency is a very complex topic, and I could not describe the different causes any better than Wikipedia does, so if you want to learn more, you should check out their [article about color blindness](#).

Dichromacy



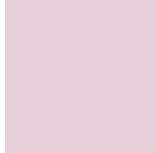


Tritanopia
FFC8D7

Trichromacy



Original Color
FFC8D5



Protanomaly
E6D0DA



Deuteranomaly
F3CDD4

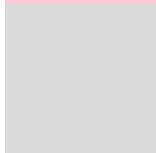


Tritanomaly
FFC8D6

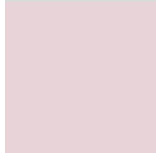
Monochromacy



Original Color
FFC8D5



Achromatopsia
DADADA



Achromatomaly
E7D3D8

CSS Examples

Text

The CSS property to change the color of the text to Hex FFC8D5 is called "color". The color property can be set on classes, ids or directly on the HTML element.

This example shows how text in the color #FFC8D5 looks like.

```
.text, #text, p{  
    color:#FFC8D5  
}
```

If you want to add a text shadow in that color use the text-shadow property, you can generate a text shadow directly with our [CSS Text Shadow Generator](#).

Here you see how black text with a 4 pixel #FFC8D5 colored shadow looks like.

```
.shadow{ text-shadow: 4px 4px 2px #FFC8D5 }  
}
```

Border

The CSS property to change the border of an element to Hex FFC8D5 is called "border". The border property can be set on classes, ids or directly on the HTML element.

This example shows the color as border, it can be applied via the CSS property "border" or "border-color".

```
.border, #border, table{ border:4px solid #FFC8D5 }  
}
```

If only the border color should be changed use the property `border-color`.

```
.border{ border-color:#FFC8D5 }
```

If you want to add a box shadow in that color use:

Here you see how a box with a 4 pixel #FFC8D5 colored shadow looks like.

```
.boxshadow{ -moz-box-shadow:4px 4px 4px  
4px #FFC8D5; -webkit-box-shadow:4px 4px  
4px 4px #FFC8D5; box-shadow:4px 4px 4px  
4px #FFC8D5 }
```

Background

The CSS property to change the background color of an element to Hex FFC8D5 is called "background". The background property can be set on classes, ids or directly on the HTML element.

```
.background, #background, body{  
background:#FFC8D5 }
```

If only the background color should be changed can be used:

```
.background{ background-color:#FFC8D5 }
```

This example shows the color as background, it is applied via the CSS property "background".

To optimize and compress your CSS code, you can use our [online CSS compressor and optimizer](#) based on csstidy. If you want to create a linear or radial gradient as background or border, check our [CSS Gradient Generator](#).

Hey! You found this booklet interesting? Support Converting Colors with the new Membership Option!

The pro membership hides all ads, plus gives you double the colors in the color bucket, and more awesome pro features!

[Learn more, Memberships starting at \\$2.50/m!](#)

**Follow me
on Twitter!**

@ConvertingColor