

Converting Colors

Hex(FFC8DC)

Have a look what the booklet for
Hex(FFC8DC) contains.

Hex(FFC8DC)	3
<i>Conversions</i>	4
<i>Details</i>	6
<i>Harmonies</i>	11
<i>Previews</i>	23
<i>Color Blindness Simulation</i>	26
<i>CSS Examples</i>	29

Color

Hex(FFC8DC)

Conversions

Conversions Part 1

Format	Color
Hex	FFC8DC
RGB	255, 200, 220
RGB Percent	100%, 78%, 86%
CMY	0.0000, 0.2157, 0.1373
CMYK	0.00, 0.22, 0.14, 0.00
HSL	338°, 100%, 89%
HSV	338°, 22%, 100%
XYZ	74.8125, 67.7359, 76.8414
YIQ	218.7250, 26.3600, 17.8800

Conversions

Conversions Part 2

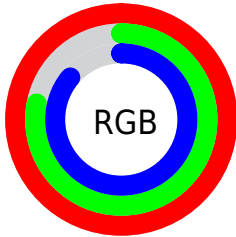
Format	Color
R _Y B	255, 200, 220
Decimal	16763100
CIE Lab	85.87, 22.54, -2.42
CIE LCh	86, 22.669, 353.876
Yxy	67.7359, 0.3410, 0.3087
Android (android.graphics.Color)	4294953180 (0xFFFFC8DC)
YUV	218.7250, 0.6286, 31.8132
Hunter-Lab	82.3018, 18.2288, 2.2549

Details

The Hex color **FFC8DC** is a light color, and the websafe version is hex **FFCCCC**. A complement of this color would be **C8FFEB**, and the grayscale version is **DBDBDB**.

A 20% lighter version of the original color is **FFFFFF**, and **C692A5** is the 20% darker color. If you saturate the color by 10%, you get **FFAFCC**, and if you desaturate by 10%, it is **FFE2EC**.

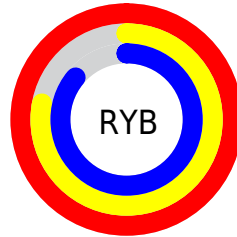
Distribution



Red (100%)

Green (78%)

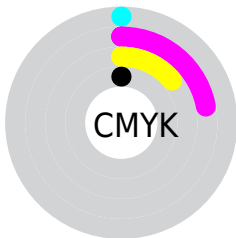
Blue (86%)



Red (100%)

Yellow (78%)

Blue (86%)

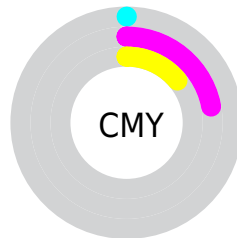


Cyan (0%)

Magenta (22%)

Yellow (14%)

Black (0%)



Cyan (0%)

Magenta (22%)

Yellow (14%)

Brightness & Saturation Gradients

These gradients show how the Hex color FFC8DC changes by changing the brightness by 10 percent. The first figure shows a shift by +10% for each color and the second figure -10%.

Similar to the brightness gradients but the following saturation gradients show a change of the Hex color FFC8DC by changing the saturation by 10% instead.

 FFC8DC

FFFFFF

 FFC8DC

 E2ADC0

 C692A5

 AA788B

 8F5F71

 754759

 5B2F42

 43192C

 2C0317

 0C0000

 FFC8DC

 FFC8DC

 FFAFCC

 FFE2EC

 FF95BC

 FFFBFC

 FF7BAB

FFFFFF

 FF629B

 FF498B

 FF2F7B

 FF166A

 FF005D

Harmonies

Analogous

The Analogous color harmony consists of three colors that are next to each other on the color wheel.



EECCF0



FFC8DC



FFC8C6

Triad

The Triadic color harmony groups three colors that are evenly spaced from another and form a triangle on the color wheel.



FFC8DC



D5DBAF



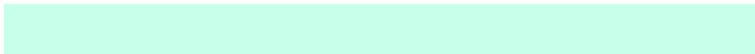
A3E0F9

Complementary

The Complementary color scheme is a pair of colors which are on the opposite of each other on the color wheel.



FFC8DC



C8FFEB

Split Complementary

Split-complementary colors differ from the complementary color scheme. The scheme consists of three colors, the original color and two neighbors of the complement color.



9DE3E7



FFC8DC



BCE0BD

Square

The Square scheme is like the rectangle color scheme, but the four colors are evenly spaced on the color wheel.



FFC8DC



ECD4AC



A7E3D1



B9DAFF

Rectangle

The Rectangle color scheme consists of four colors that form a rectangle on the color wheel.



FFC8DC



FFCBBA



A7E3D1



9FE1F4

Sweetspot

The Sweet Spot groups the original color and five complimentary colors.



FFC8DC



FFF0F5



EBC8FF



80777A



000000



808080

Same Dimension

The Same Dimension uses a secret algorithm to generate beautiful new colors.



FFC8DC



FFBDD5



FFCFC8



807377



BF0046



400017

Inverse Universe

The Inverse Universe completely reimagines the original color for something new.



FFC8DC



FFBDD5



C8F8FF



807377



BF0046



400017

Previews

White Background



This preview shows how the Hex color FFC8DC looks on a white background.

Color Contrast Check

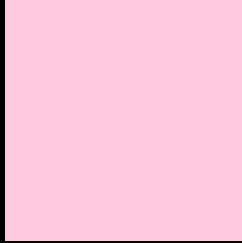
Large Text (above 18pt) WCAG AA × Fail

Any Text WCAG AA × Fail

Large Text (above 18pt) WCAG AAA × Fail

Any Text WCAG AAA × Fail

Black Background



This preview shows how the Hex color FFC8DC looks on a black background.

Color Contrast Check

Large Text (above 18pt) WCAG AA ✓ Pass

Any Text WCAG AA ✓ Pass

Large Text (above 18pt) WCAG AAA ✓ Pass

Any Text WCAG AAA ✓ Pass

If you want to check with other color combinations, try the [Color Contrast Checker](#).

Hex FFC8DC Background



This preview shows how black text looks on a background with the Hex color FFC8DC.

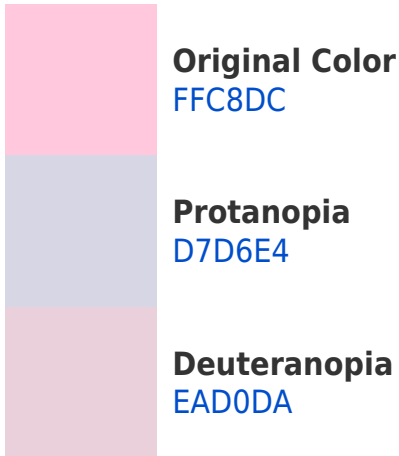


This preview shows how white text looks on a background with the Hex color FFC8DC.

Color Blindness Simulation

Color vision deficiency is a very complex topic, and I could not describe the different causes any better than Wikipedia does, so if you want to learn more, you should check out their [article about color blindness](#).

Dichromacy



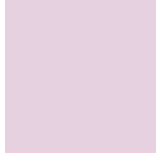


Tritanopia
FFC9D8

Trichromacy



Original Color
FFC8DC



Protanomaly
E6D1E1



Deuteranomaly
F2CDDB

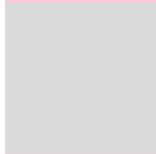


Tritanomaly
FFC9D9

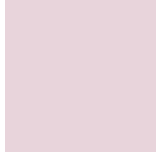
Monochromacy



Original Color
FFC8DC



Achromatopsia
DBDBDB



Achromatomaly
E8D4DB

CSS Examples

Text

The CSS property to change the color of the text to Hex FFC8DC is called "color". The color property can be set on classes, ids or directly on the HTML element.

This example shows how text in the color #FFC8DC looks like.

```
.text, #text, p{  
    color:#FFC8DC  
}
```

If you want to add a text shadow in that color use the text-shadow property, you can generate a text shadow directly with our [CSS Text Shadow Generator](#).

Here you see how black text with a 4 pixel #FFC8DC colored shadow looks like.

```
.shadow{ text-shadow: 4px 4px 2px #FFC8DC
}
```

Border

The CSS property to change the border of an element to Hex FFC8DC is called "border". The border property can be set on classes, ids or directly on the HTML element.

This example shows the color as border, it can be applied via the CSS property "border" or "border-color".

```
.border, #border, table{ border:4px solid
#FFC8DC }
```

If only the border color should be changed use the property `border-color`.

```
.border{ border-color:#FFC8DC }
```

If you want to add a box shadow in that color use:

Here you see how a box with a 4 pixel #FFC8DC colored shadow looks like.

```
.boxshadow{ -moz-box-shadow:4px 4px 4px  
4px #FFC8DC; -webkit-box-shadow:4px 4px  
4px 4px #FFC8DC; box-shadow:4px 4px 4px  
4px #FFC8DC }
```

Background

The CSS property to change the background color of an element to Hex FFC8DC is called "background". The background property can be set on classes, ids or directly on the HTML element.

```
.background, #background, body{  
background:#FFC8DC }
```

If only the background color should be changed can be used:

```
.background{ background-color:#FFC8DC }
```

This example shows the color as background, it is applied via the CSS property "background".

To optimize and compress your CSS code, you can use our [online CSS compressor and optimizer](#) based on csstidy. If you want to create a linear or radial gradient as background or border, check our [CSS Gradient Generator](#).

Hey! You found this booklet interesting? Support Converting Colors with the new Membership Option!

The pro membership hides all ads, plus gives you double the colors in the color bucket, and more awesome pro features!

[Learn more, Memberships starting at \\$2.50/m!](#)

**Follow me
on Twitter!**

@ConvertingColor