

# Converting Colors

Hex(FFC9BA)

Have a look what the booklet for  
Hex(FFC9BA) contains.

<b>Hex(FFC9BA)</b> .....	3
<i><b>Conversions</b></i> .....	4
<i><b>Details</b></i> .....	6
<i><b>Harmonies</b></i> .....	11
<i><b>Previews</b></i> .....	23
<i><b>Color Blindness Simulation</b></i> .....	26
<i><b>CSS Examples</b></i> .....	29

**Color**

**Hex(FFC9BA)**

# Conversions

## Conversions Part 1

Format	Color
Hex	FFC9BA
RGB	255, 201, 186
RGB Percent	100%, 79%, 73%
CMY	0.0000, 0.2118, 0.2706
CMYK	0.00, 0.21, 0.27, 0.00
HSL	13°, 100%, 86%
HSV	13°, 27%, 100%
XYZ	70.9896, 66.5785, 55.5637
YIQ	215.4360, 36.9990, 6.7830

# Conversions

## Conversions Part 2

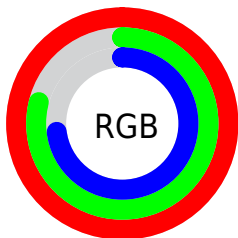
Format	Color
R <sub>Y</sub> B	255, 205, 186
Decimal	16763322
CIE Lab	85.29, 17.05, 14.82
CIE LCh	85, 22.590, 40.983
Yxy	66.5785, 0.3676, 0.3447
Android (android.graphics.Color)	4294953402 (0xFFFFC9BA)
YUV	215.4360, -14.5119, 34.6976
Hunter-Lab	81.5956, 12.5057, 16.7425

# Details

The Hex color **FFC9BA** is a light color, and the websafe version is hex **FFCCCC**. A complement of this color would be **BAF0FF**, and the grayscale version is **D8D8D8**.

A 20% lighter version of the original color is **FFFFFF2**, and **C59385** is the 20% darker color. If you saturate the color by 10%, you get **FFB5A1**, and if you desaturate by 10%, it is **FFDDD3**.

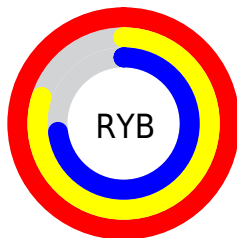
# Distribution



Red (100%)

Green (79%)

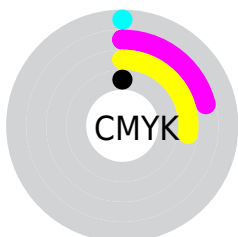
Blue (73%)



Red (100%)

Yellow (80%)

Blue (73%)

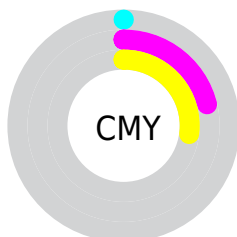


Cyan (0%)

Magenta (21%)

Yellow (27%)

Black (0%)



Cyan (0%)

Magenta (21%)

Yellow (27%)

# Brightness & Saturation Gradients

These gradients show how the Hex color FFC9BA changes by changing the brightness by 10 percent. The first figure shows a shift by +10% for each color and the second figure -10%.

Similar to the brightness gradients but the following saturation gradients show a change of the Hex color FFC9BA by changing the saturation by 10% instead.



 FFC9BA

 FFC9BA

FFFFFF

 E2AE9F

 FFFFF2

 C59385

 A9796C

 8E6053

 73483C

 5A3126

 411C12

 2A0500

 000000

 FFC9BA

 FFC9BA

 FF8D6D

 FFDDDD3

 FFA187

 FFF1ED

 FF8D6D

FFFFFF

 FF7954

 FF653A

 FF5121

 FF3D08

 FF3700

# Harmonies

## Analogous

The Analogous color harmony consists of three colors that are next to each other on the color wheel.



FFC6CE



FFC9BA



F2CFAD

# Triad

The Triadic color harmony groups three colors that are evenly spaced from another and form a triangle on the color wheel.



FFC9BA



AEE0C6



C7D4FF

# Complementary

The Complementary color scheme is a pair of colors which are on the opposite of each other on the color wheel.



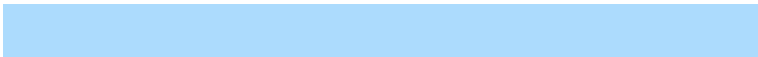
FFC9BA



BAF0FF

# Split Complementary

Split-complementary colors differ from the complementary color scheme. The scheme consists of three colors, the original color and two neighbors of the complement color.



ACDBFD



FFC9BA



9EE2DC

# Square

The Square scheme is like the rectangle color scheme, but the four colors are evenly spaced on the color wheel.



FFC9BA



C5DCB4



9CE0F0



E3CDF5

# Rectangle

The Rectangle color scheme consists of four colors that form a rectangle on the color wheel.



FFC9BA



E5D4AB



9CE0F0



BED7FF

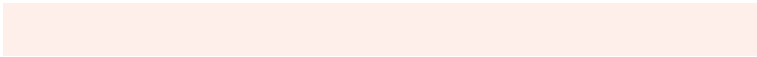


# Sweetspot

The Sweet Spot groups the original color and five complimentary colors.



FFC9BA



FFEFE8



FFBAF0



807673



000000



808080



# Same Dimension

The Same Dimension uses a secret algorithm to generate beautiful new colors.



FFC9BA



FFBFAD



FFE8BA



807673



BF2A00

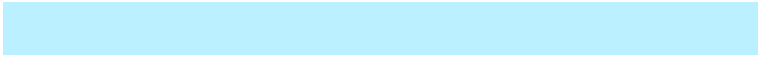


400E00

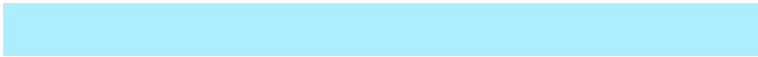


# Inverse Universe

The Inverse Universe completely reimagines the original color for something new.



BAF0FF



ADEDFE



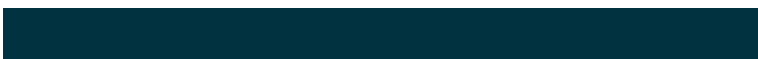
BACEFF



737D80



0096BF



003240



# Previews

## White Background



This preview shows how the Hex color FFC9BA looks on a white background.

## Color Contrast Check

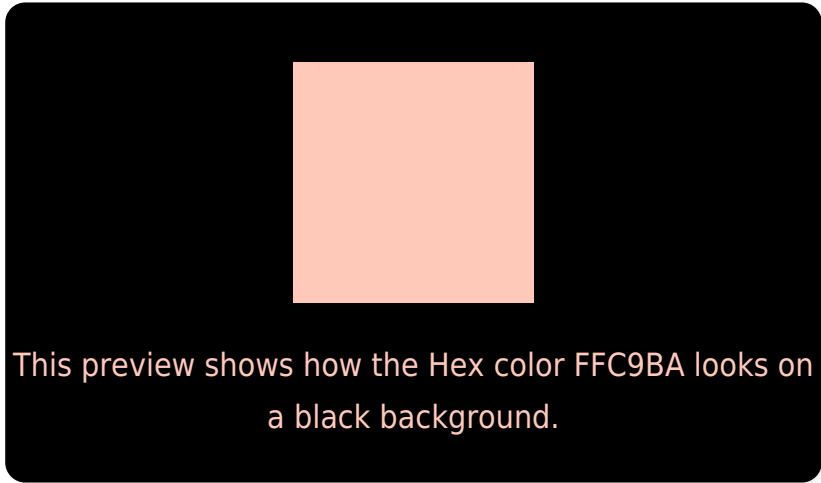
Large Text (above 18pt) WCAG AA × Fail

Any Text WCAG AA × Fail

Large Text (above 18pt) WCAG AAA × Fail

Any Text WCAG AAA × Fail

# Black Background



## Color Contrast Check

Large Text (above 18pt) WCAG AA ✓ Pass

Any Text WCAG AA ✓ Pass

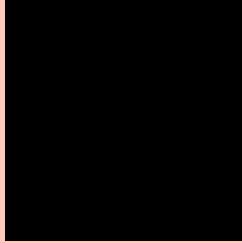
Large Text (above 18pt) WCAG AAA ✓ Pass

Any Text WCAG AAA ✓ Pass

If you want to check with other color combinations, try the [Color Contrast Checker](#).



## Hex FFC9BA Background



This preview shows how black text looks on a background with the Hex color FFC9BA.

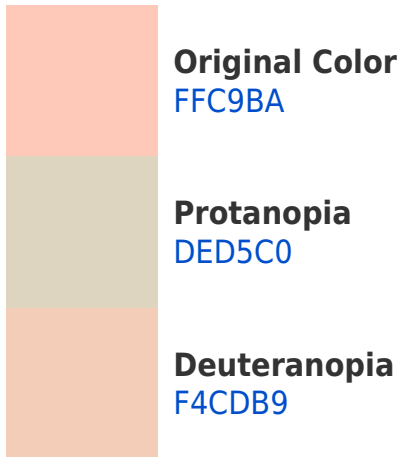


This preview shows how white text looks on a background with the Hex color FFC9BA.

# Color Blindness Simulation

Color vision deficiency is a very complex topic, and I could not describe the different causes any better than Wikipedia does, so if you want to learn more, you should check out their [article about color blindness](#).

## Dichromacy



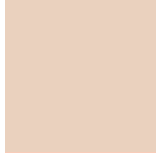


**Tritanopia**  
FFC6D4

# Trichromacy



**Original Color**  
FFC9BA



**Protanomaly**  
EAD1BE



**Deuteranomaly**  
F8CCB9

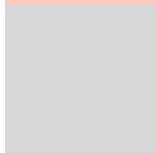


**Tritanomaly**  
FFC7CB

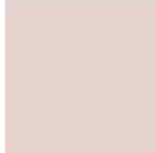
# Monochromacy



**Original Color**  
FFC9BA



**Achromatopsia**  
D7D7D7



**Achromatomaly**  
E6D2CC

# CSS Examples

## Text

The CSS property to change the color of the text to Hex FFC9BA is called "color". The color property can be set on classes, ids or directly on the HTML element.

This example shows how text in the color #FFC9BA looks like.

```
.text, #text, p{  
    color:#FFC9BA  
}
```

If you want to add a text shadow in that color use the text-shadow property, you can generate a text shadow directly with our [CSS Text Shadow Generator](#).

Here you see how black text with a 4 pixel #FFC9BA colored shadow looks like.

```
.shadow{ text-shadow: 4px 4px 2px #FFC9BA }  
}
```

## Border

The CSS property to change the border of an element to Hex FFC9BA is called "border". The border property can be set on classes, ids or directly on the HTML element.

This example shows the color as border, it can be applied via the CSS property "border" or "border-color".

```
.border, #border, table{ border:4px solid #FFC9BA }  
}
```

If only the border color should be changed use the property `border-color`.

```
.border{ border-color:#FFC9BA }
```

If you want to add a box shadow in that color use:

Here you see how a box with a 4 pixel #FFC9BA colored shadow looks like.

```
.boxshadow{ -moz-box-shadow:4px 4px 4px  
4px #FFC9BA; -webkit-box-shadow:4px 4px  
4px 4px #FFC9BA; box-shadow:4px 4px 4px  
4px #FFC9BA }
```

# Background

The CSS property to change the background color of an element to Hex FFC9BA is called "background". The background property can be set on classes, ids or directly on the HTML element.

```
.background, #background, body{  
background:#FFC9BA }
```

If only the background color should be changed can be used:

```
.background{ background-color:#FFC9BA }
```

This example shows the color as background, it is applied via the CSS property "background".

To optimize and compress your CSS code, you can use our [online CSS compressor and optimizer](#) based on csstidy. If you want to create a linear or radial gradient as background or border, check our [CSS Gradient Generator](#).



Hey! You found this booklet interesting? Support Converting Colors with the new Membership Option!

The pro membership hides all ads, plus gives you double the colors in the color bucket, and more awesome pro features!

**[Learn more, Memberships starting at \\$2.50/m!](#)**

**Follow me  
on Twitter!**

@ConvertingColor