

Converting Colors

Hex(FFC9BF)

Have a look what the booklet for
Hex(FFC9BF) contains.

Hex(FFC9BF)	3
<i>Conversions</i>	4
<i>Details</i>	6
<i>Harmonies</i>	11
<i>Previews</i>	23
<i>Color Blindness Simulation</i>	26
<i>CSS Examples</i>	29

Color

Hex(FFC9BF)

Conversions

Conversions Part 1

Format	Color
Hex	FFC9BF
RGB	255, 201, 191
RGB Percent	100%, 79%, 75%
CMY	0.0000, 0.2118, 0.2510
CMYK	0.00, 0.21, 0.25, 0.00
HSL	9°, 100%, 87%
HSV	9°, 25%, 100%
XYZ	71.5306, 66.7949, 58.4128
YIQ	216.0060, 35.3940, 8.3380

Conversions

Conversions Part 2

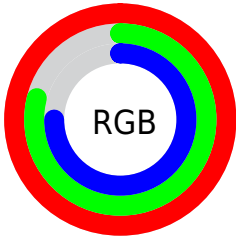
Format	Color
R_{YB}	255, 203, 191
Decimal	16763327
CIE _{Lab}	85.40, 17.73, 12.32
CIE _{LCh}	85, 21.590, 34.789
Yxy	66.7949, 0.3636, 0.3395
Android (android.graphics.Color)	4294953407 (0xFFFFC9BF)
YUV	216.0060, -12.3280, 34.1977
Hunter-Lab	81.7281, 13.2037, 14.8339

Details

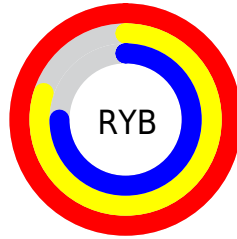
The Hex color **FFC9BF** is a light color, and the websafe version is hex **FFCCCC**. A complement of this color would be **BFF5FF**, and the grayscale version is **D8D8D8**.

A 20% lighter version of the original color is **FFFFFF7**, and **C5938A** is the 20% darker color. If you saturate the color by 10%, you get **FFB3A6**, and if you desaturate by 10%, it is **FFDFD9**.

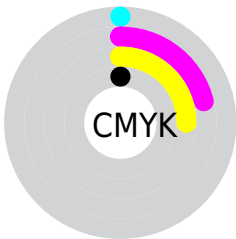
Distribution



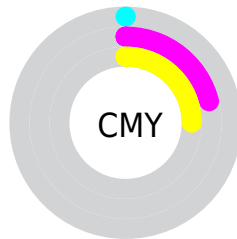
- Red (100%)
- Green (79%)
- Blue (75%)



- Red (100%)
- Yellow (80%)
- Blue (75%)



- Cyan (0%)
- Magenta (21%)
- Yellow (25%)
- Black (0%)



- Cyan (0%)
- Magenta (21%)
- Yellow (25%)

Brightness & Saturation Gradients

These gradients show how the Hex color FFC9BF changes by changing the brightness by 10 percent. The first figure shows a shift by +10% for each color and the second figure -10%.

Similar to the brightness gradients but the following saturation gradients show a change of the Hex color FFC9BF by changing the saturation by 10% instead.

 FFC9BF

 FFC9BF

FFFFFFF

 E2AEA4

 FFFFF7

 C5938A

 A97970

 8E6058

 744840

 5A312A

 411B16

 2A0500

 000000

 FFC9BF

 FFC9BF

 FF83A6

 FFDFD9

 FF9E8C

 FFF4F2

 FF8873

FFFFFF

 FF7359

 FF5D40

 FF4826

 FF320D

 FF2800

Harmonies

Analogous

The Analogous color harmony consists of three colors that are next to each other on the color wheel.



FFC7D3



FFC9BF



F5CEB1

Triad

The Triadic color harmony groups three colors that are evenly spaced from another and form a triangle on the color wheel.



FFC9BF



B4E0C3



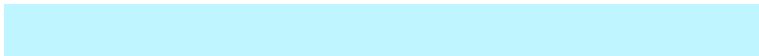
C2D6FE

Complementary

The Complementary color scheme is a pair of colors which are on the opposite of each other on the color wheel.



FFC9BF



BFF5FF

Split Complementary

Split-complementary colors differ from the complementary color scheme. The scheme consists of three colors, the original color and two neighbors of the complement color.



ABDCFA



FFC9BF



A3E1D8

Square

The Square scheme is like the rectangle color scheme, but the four colors are evenly spaced on the color wheel.



FFC9BF



CBDBB4



9FE0EC



DDCFF7

Rectangle

The Rectangle color scheme consists of four colors that form a rectangle on the color wheel.



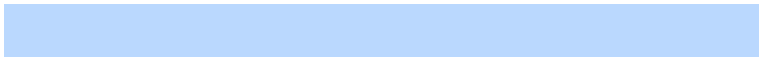
FFC9BF



E9D3AD



9FE0EC



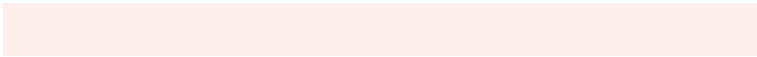
BAD8FE

Sweetspot

The Sweet Spot groups the original color and five complimentary colors.



FFC9BF



FFEEEE



FFBFF5



807573



000000



808080

Same Dimension

The Same Dimension uses a secret algorithm to generate beautiful new colors.



FFC9BF



FFBEB3



FFE9BF



807573



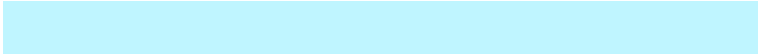
BF1E00



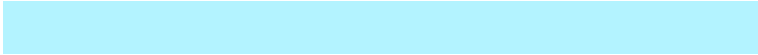
400A00

Inverse Universe

The Inverse Universe completely reimagines the original color for something new.



BFF5FF



B3F3FF



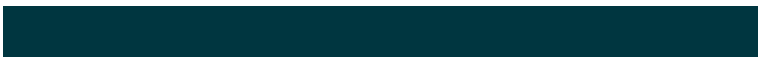
BFD5FF



737E80



00A1BF



003640

Previews

White Background



This preview shows how the Hex color FFC9BF looks on a white background.

Color Contrast Check

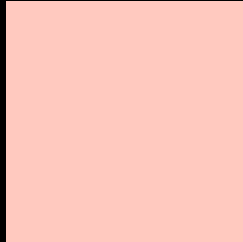
Large Text (above 18pt) WCAG AA × Fail

Any Text WCAG AA × Fail

Large Text (above 18pt) WCAG AAA × Fail

Any Text WCAG AAA × Fail

Black Background



This preview shows how the Hex color FFC9BF looks on a black background.

Color Contrast Check

Large Text (above 18pt) WCAG AA ✓ Pass

Any Text WCAG AA ✓ Pass

Large Text (above 18pt) WCAG AAA ✓ Pass

Any Text WCAG AAA ✓ Pass

If you want to check with other color combinations, try the [Color Contrast Checker](#).

Hex FFC9BF Background



This preview shows how black text looks on a background with the Hex color FFC9BF.

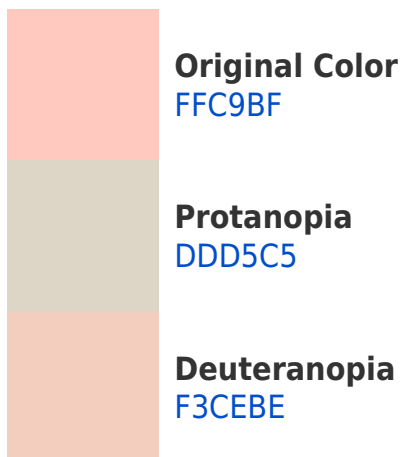


This preview shows how white text looks on a background with the Hex color FFC9BF.

Color Blindness Simulation

Color vision deficiency is a very complex topic, and I could not describe the different causes any better than Wikipedia does, so if you want to learn more, you should check out their [article about color blindness](#).

Dichromacy



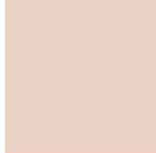


Tritanopia
FFC7D5

Trichromacy



Original Color
FFC9BF



Protanomaly
E9D1C3



Deuteranomaly
F7CCBE

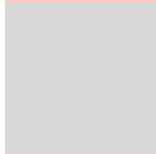


Tritanomaly
FFC8CD

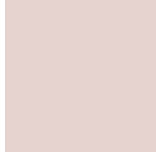
Monochromacy



Original Color
FFC9BF



Achromatopsia
D8D8D8



Achromatomaly
E6D3CF

CSS Examples

Text

The CSS property to change the color of the text to Hex FFC9BF is called "color". The color property can be set on classes, ids or directly on the HTML element.

This example shows how text in the color #FFC9BF looks like.

```
.text, #text, p{  
    color:#FFC9BF  
}
```

If you want to add a text shadow in that color use the text-shadow property, you can generate a text shadow directly with our [CSS Text Shadow Generator](#).

Here you see how black text with a 4 pixel #FFC9BF colored shadow looks like.

```
.shadow{ text-shadow: 4px 4px 2px #FFC9BF
}
```

Border

The CSS property to change the border of an element to Hex FFC9BF is called "border". The border property can be set on classes, ids or directly on the HTML element.

This example shows the color as border, it can be applied via the CSS property "border" or "border-color".

```
.border, #border, table{ border:4px solid
#FFC9BF }
```

If only the border color should be changed use the property `border-color`.

```
.border{ border-color:#FFC9BF }
```

If you want to add a box shadow in that color use:

Here you see how a box with a 4 pixel #FFC9BF colored shadow looks like.

```
.boxshadow{ -moz-box-shadow:4px 4px 4px  
4px #FFC9BF; -webkit-box-shadow:4px 4px  
4px 4px #FFC9BF; box-shadow:4px 4px 4px  
4px #FFC9BF }
```

Background

The CSS property to change the background color of an element to Hex FFC9BF is called "background". The background property can be set on classes, ids or directly on the HTML element.

```
.background, #background, body{  
background:#FFC9BF }
```

If only the background color should be changed can be used:

```
.background{ background-color:#FFC9BF }
```

This example shows the color as background, it is applied via the CSS property "background".

To optimize and compress your CSS code, you can use our [online CSS compressor and optimizer](#) based on csstidy. If you want to create a linear or radial gradient as background or border, check our [CSS Gradient Generator](#).

Hey! You found this booklet interesting? Support Converting Colors with the new Membership Option!

The pro membership hides all ads, plus gives you double the colors in the color bucket, and more awesome pro features!

[Learn more, Memberships starting at \\$2.50/m!](#)

**Follow me
on Twitter!**

@ConvertingColor