

Converting Colors

Hex(FFC9E9)

Have a look what the booklet for
Hex(FFC9E9) contains.

Hex(FFC9E9)	3
<i>Conversions</i>	4
<i>Details</i>	6
<i>Harmonies</i>	11
<i>Previews</i>	23
<i>Color Blindness Simulation</i>	26
<i>CSS Examples</i>	29

Color

Hex(FFC9E9)

Conversions

Conversions Part 1

Format	Color
Hex	FFC9E9
RGB	255, 201, 233
RGB Percent	100%, 79%, 91%
CMY	0.0000, 0.2118, 0.0863
CMYK	0.00, 0.21, 0.09, 0.00
HSL	324°, 100%, 89%
HSV	324°, 21%, 100%
XYZ	76.8346, 68.9165, 86.3434
YIQ	220.7940, 21.9120, 21.4000

Conversions

Conversions Part 2

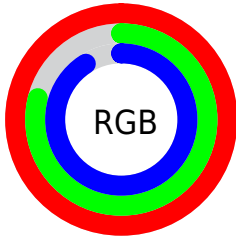
Format	Color
R_{YB}	255, 201, 233
Decimal	16763369
CIE _{Lab}	86.46, 24.13, -8.46
CIE _{LCh}	86, 25.566, 340.676
Yxy	68.9165, 0.3310, 0.2969
Android (android.graphics.Color)	4294953449 (0xFFFFC9E9)
YUV	220.7940, 6.0176, 29.9987
Hunter-Lab	83.0160, 19.9311, -3.5553

Details

The Hex color **FFC9E9** is a light color, and the websafe version is hex **FFCCFF**. A complement of this color would be **C9FFDF**, and the grayscale version is **DDDDDD**.

A 20% lighter version of the original color is **FFFFFF**, and **C693B1** is the 20% darker color. If you saturate the color by 10%, you get **FFB0DF**, and if you desaturate by 10%, it is **FFE3F3**.

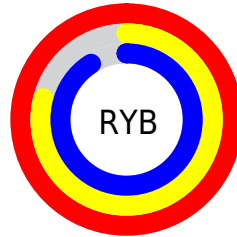
Distribution



Red (100%)

Green (79%)

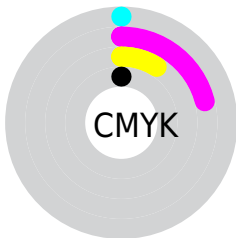
Blue (91%)



Red (100%)

Yellow (79%)

Blue (91%)

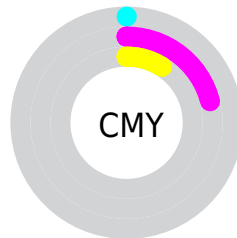


Cyan (0%)

Magenta (21%)

Yellow (9%)

Black (0%)



Cyan (0%)

Magenta (21%)

Yellow (9%)

Brightness & Saturation Gradients

These gradients show how the Hex color FFC9E9 changes by changing the brightness by 10 percent. The first figure shows a shift by +10% for each color and the second figure -10%.

Similar to the brightness gradients but the following saturation gradients show a change of the Hex color FFC9E9 by changing the saturation by 10% instead.

 FFC9E9

FFFFFF

 FFC9E9

 E2ADCD

 C693B1

 AA7997

 8F607D

 754764

 5C304C

 431A35

 2C0320

 120006

 FFC9E9

 FFC9E9

 FFB0DF

 FFE3F3

 FF96D4

 FFFCFE

 FF7CCA

FFFFFF

 FF63BF

 FF49B5

 FF30AB

 FF16A0

 FF0097

Harmonies

Analogous

The Analogous color harmony consists of three colors that are next to each other on the color wheel.



E7CFFD



FFC9E9



FFC7D0

Triad

The Triadic color harmony groups three colors that are evenly spaced from another and form a triangle on the color wheel.



FFC9E9



E2DAA9



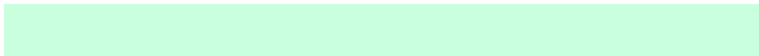
96E4F7

Complementary

The Complementary color scheme is a pair of colors which are on the opposite of each other on the color wheel.



FFC9E9



C9FFDF

Split Complementary

Split-complementary colors differ from the complementary color scheme. The scheme consists of three colors, the original color and two neighbors of the complement color.



98E6E0



FFC9E9



C7E1B3

Square

The Square scheme is like the rectangle color scheme, but the four colors are evenly spaced on the color wheel.



FFC9E9



F9D1AB



ACE5C8



A9DFFF

Rectangle

The Rectangle color scheme consists of four colors that form a rectangle on the color wheel.



FFC9E9



FFC9C1



ACE5C8



95E5F0

Sweetspot

The Sweet Spot groups the original color and five complimentary colors.



FFC9E9



FFF0F9



DFC9FF



80777C



000000



808080

Same Dimension

The Same Dimension uses a secret algorithm to generate beautiful new colors.



FFC9E9



FFBFE5



FFC9CE



80737A



BF0071



400026

Inverse Universe

The Inverse Universe completely reimagines the original color for something new.



FFC9E9



FFBFE5



C9FFFA



80737A



BF0071



400026

Previews

White Background



This preview shows how the Hex color FFC9E9 looks on a white background.

Color Contrast Check

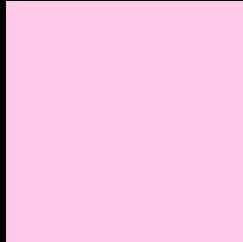
Large Text (above 18pt) WCAG AA × Fail

Any Text WCAG AA × Fail

Large Text (above 18pt) WCAG AAA × Fail

Any Text WCAG AAA × Fail

Black Background



This preview shows how the Hex color FFC9E9 looks on a black background.

Color Contrast Check

Large Text (above 18pt) WCAG AA ✓ Pass

Any Text WCAG AA ✓ Pass

Large Text (above 18pt) WCAG AAA ✓ Pass

Any Text WCAG AAA ✓ Pass

If you want to check with other color combinations, try the [Color Contrast Checker](#).

Hex FFC9E9 Background



This preview shows how black text looks on a background with the Hex color FFC9E9.



This preview shows how white text looks on a background with the Hex color FFC9E9.

Color Blindness Simulation

Color vision deficiency is a very complex topic, and I could not describe the different causes any better than Wikipedia does, so if you want to learn more, you should check out their [article about color blindness](#).

Dichromacy



Original Color
FFC9E9

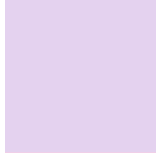
Protanopia
D5D7F2

Deuteranopia
E7D2E7

Trichromacy



Original Color
FFC9E9



Protanomaly
E4D2EF



Deuteranomaly
F0CFE8

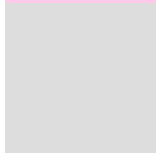


Tritanomaly
FECAE0

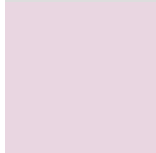
Monochromacy



Original Color
FFC9E9



Achromatopsia
DDDDDD



Achromatomaly
E9D6E1

CSS Examples

Text

The CSS property to change the color of the text to Hex FFC9E9 is called "color". The color property can be set on classes, ids or directly on the HTML element.

This example shows how text in the color #FFC9E9 looks like.

```
.text, #text, p{  
    color:#FFC9E9  
}
```

If you want to add a text shadow in that color use the text-shadow property, you can generate a text shadow directly with our [CSS Text Shadow Generator](#).

Here you see how black text with a 4 pixel #FFC9E9 colored shadow looks like.

```
.shadow{ text-shadow: 4px 4px 2px #FFC9E9
}
```

Border

The CSS property to change the border of an element to Hex FFC9E9 is called "border". The border property can be set on classes, ids or directly on the HTML element.

This example shows the color as border, it can be applied via the CSS property "border" or "border-color".

```
.border, #border, table{ border:4px solid
#FFC9E9 }
```

If only the border color should be changed use the property `border-color`.

```
.border{ border-color:#FFC9E9 }
```

If you want to add a box shadow in that color use:

Here you see how a box with a 4 pixel #FFC9E9 colored shadow looks like.

```
.boxshadow{ -moz-box-shadow:4px 4px 4px  
4px #FFC9E9; -webkit-box-shadow:4px 4px  
4px 4px #FFC9E9; box-shadow:4px 4px 4px  
4px #FFC9E9 }
```

Background

The CSS property to change the background color of an element to Hex FFC9E9 is called "background". The background property can be set on classes, ids or directly on the HTML element.

```
.background, #background, body{  
background:#FFC9E9 }
```

If only the background color should be changed can be used:

```
.background{ background-color:#FFC9E9 }
```

This example shows the color as background, it is applied via the CSS property "background".

To optimize and compress your CSS code, you can use our [online CSS compressor and optimizer](#) based on csstidy. If you want to create a linear or radial gradient as background or border, check our [CSS Gradient Generator](#).

Hey! You found this booklet interesting? Support Converting Colors with the new Membership Option!

The pro membership hides all ads, plus gives you double the colors in the color bucket, and more awesome pro features!

[Learn more, Memberships starting at \\$2.50/m!](#)

**Follow me
on Twitter!**

@ConvertingColor