

Converting Colors

Hex(FFCCD7)

Have a look what the booklet for
Hex(FFCCD7) contains.

Hex(FFCCD7)	3
<i>Conversions</i>	4
<i>Details</i>	6
<i>Harmonies</i>	11
<i>Previews</i>	23
<i>Color Blindness Simulation</i>	26
<i>CSS Examples</i>	29

Color

Hex(FFCCD7)

Conversions

Conversions Part 1

Format	Color
Hex	FFCCD7
RGB	255, 204, 215
RGB Percent	100%, 80%, 84%
CMY	0.0000, 0.2000, 0.1569
CMYK	0.00, 0.20, 0.16, 0.00
HSL	347°, 100%, 90%
HSV	347°, 20%, 100%
XYZ	75.0986, 69.3520, 73.7181
YIQ	220.5030, 26.8650, 14.2330

Conversions

Conversions Part 2

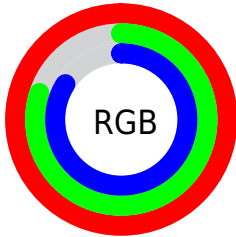
Format	Color
R _Y B	255, 204, 215
Decimal	16764119
CIE Lab	86.68, 19.66, 1.41
CIE LCh	87, 19.713, 4.112
Yxy	69.3520, 0.3442, 0.3179
Android (android.graphics.Color)	4294954199 (0xFFFFCCD7)
YUV	220.5030, -2.7130, 30.2539
Hunter-Lab	83.2779, 15.2321, 5.8106

Details

The Hex color **FFCCD7** is a light color, and the websafe version is hex **FFCCCC**. A complement of this color would be **CCFFF4**, and the grayscale version is **DDDDDD**.

A 20% lighter version of the original color is **FFFFFF**, and **C696A0** is the 20% darker color. If you saturate the color by 10%, you get **FFB3C3**, and if you desaturate by 10%, it is **FFE6EB**.

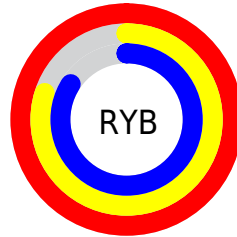
Distribution



Red (100%)

Green (80%)

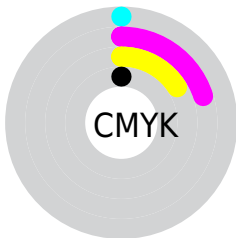
Blue (84%)



Red (100%)

Yellow (80%)

Blue (84%)

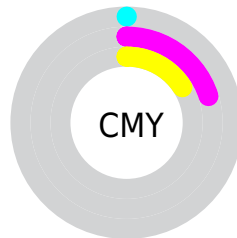


Cyan (0%)

Magenta (20%)

Yellow (16%)

Black (0%)



Cyan (0%)

Magenta (20%)

Yellow (16%)

Brightness & Saturation Gradients

These gradients show how the Hex color FFCCD7 changes by changing the brightness by 10 percent. The first figure shows a shift by +10% for each color and the second figure -10%.

Similar to the brightness gradients but the following saturation gradients show a change of the Hex color FFCCD7 by changing the saturation by 10% instead.

 FFCCD7

FFFFFF

 FFCCD7

 E2B0BB

 C696A0

 AA7C86

 8F626D

 754A55

 5C333E

 431D28

 2C0713

 0E0000

 FFCCD7

 FFCCD7

 FF809B

 FFE6EB

 FF99AF

FFFFFF

 FF809B

 FF6687

 FF4D73

 FF335F

 FF194B

 FF0037

Harmonies

Analogous

The Analogous color harmony consists of three colors that are next to each other on the color wheel.



F4CEEA



FFCCD7



FFCEC5

Triad

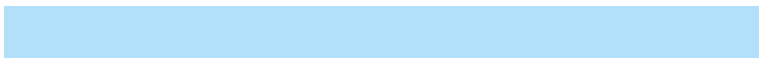
The Triadic color harmony groups three colors that are evenly spaced from another and form a triangle on the color wheel.



FFCCD7



D0DEBA



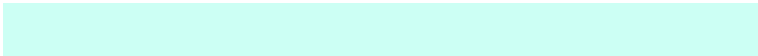
B2DFFA

Complementary

The Complementary color scheme is a pair of colors which are on the opposite of each other on the color wheel.



FFCCD7



CCFFF4

Split Complementary

Split-complementary colors differ from the complementary color scheme. The scheme consists of three colors, the original color and two neighbors of the complement color.



A8E3ED



FFCCD7



BBE2C8

Square

The Square scheme is like the rectangle color scheme, but the four colors are evenly spaced on the color wheel.



FFCCD7



E5D9B4



ACE4DB



C7DAFE

Rectangle

The Rectangle color scheme consists of four colors that form a rectangle on the color wheel.



FFCCD7



FAD1BB



ACE4DB



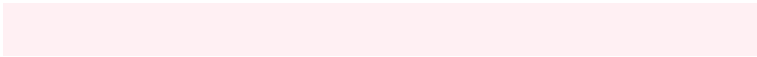
ADE1F7

Sweetspot

The Sweet Spot groups the original color and five complimentary colors.



FFCCD7



FFF0F3



F4CCFF



807779



000000



808080

Same Dimension

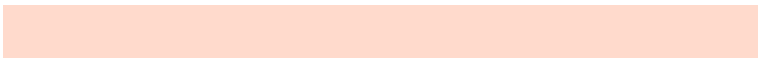
The Same Dimension uses a secret algorithm to generate beautiful new colors.



FFCCD7



FFC2CF



FFDACC



807376



BF0029



40000E

Inverse Universe

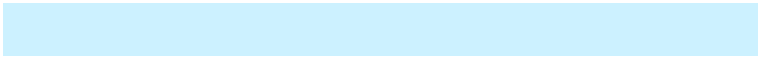
The Inverse Universe completely reimagines the original color for something new.



FFCCD7



FFC2CF



CCF1FF



807376



BF0029



40000E

Previews

White Background



This preview shows how the Hex color FFCCD7 looks on a white background.

Color Contrast Check

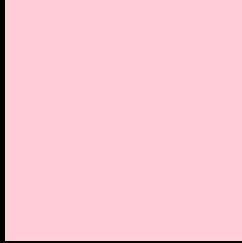
Large Text (above 18pt) WCAG AA × Fail

Any Text WCAG AA × Fail

Large Text (above 18pt) WCAG AAA × Fail

Any Text WCAG AAA × Fail

Black Background



This preview shows how the Hex color FFCCD7 looks on a black background.

Color Contrast Check

Large Text (above 18pt) WCAG AA ✓ Pass

Any Text WCAG AA ✓ Pass

Large Text (above 18pt) WCAG AAA ✓ Pass

Any Text WCAG AAA ✓ Pass

If you want to check with other color combinations, try the [Color Contrast Checker](#).

Hex FFCCD7 Background



This preview shows how black text looks on a background with the Hex color FFCCD7.

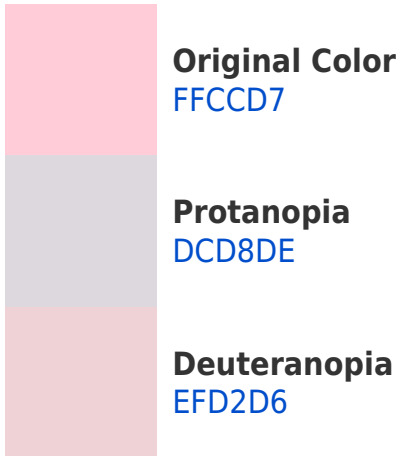


This preview shows how white text looks on a background with the Hex color FFCCD7.

Color Blindness Simulation

Color vision deficiency is a very complex topic, and I could not describe the different causes any better than Wikipedia does, so if you want to learn more, you should check out their [article about color blindness](#).

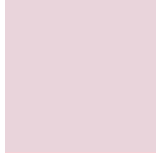
Dichromacy



Trichromacy



Original Color
FFCCD7



Protanomaly
E9D4DB



Deuteranomaly
F5D0D6

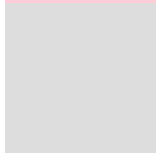


Tritanomaly
FFCCDA

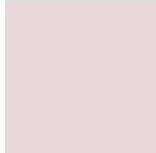
Monochromacy



Original Color
FFCCD7



Achromatopsia
DDDDDD



Achromatomaly
E9D7DB

CSS Examples

Text

The CSS property to change the color of the text to Hex FFCCD7 is called "color". The color property can be set on classes, ids or directly on the HTML element.

This example shows how text in the color #FFCCD7 looks like.

```
.text, #text, p{  
    color:#FFCCD7  
}
```

If you want to add a text shadow in that color use the text-shadow property, you can generate a text shadow directly with our [CSS Text Shadow Generator](#).

Here you see how black text with a 4 pixel #FFCCD7 colored shadow looks like.

```
.shadow{ text-shadow: 4px 4px 2px #FFCCD7
}
```

Border

The CSS property to change the border of an element to Hex FFCCD7 is called "border". The border property can be set on classes, ids or directly on the HTML element.

This example shows the color as border, it can be applied via the CSS property "border" or "border-color".

```
.border, #border, table{ border:4px solid
#FFCCD7 }
```

If only the border color should be changed use the property `border-color`.

```
.border{ border-color:#FFCCD7 }
```

If you want to add a box shadow in that color use:

Here you see how a box with a 4 pixel #FFCCD7 colored shadow looks like.

```
.boxshadow{ -moz-box-shadow:4px 4px 4px  
4px #FFCCD7; -webkit-box-shadow:4px 4px  
4px 4px #FFCCD7; box-shadow:4px 4px 4px  
4px #FFCCD7 }
```

Background

The CSS property to change the background color of an element to Hex FFCCD7 is called "background". The background property can be set on classes, ids or directly on the HTML element.

```
.background, #background, body{  
background:#FFCCD7 }
```

If only the background color should be changed can be used:

```
.background{ background-color:#FFCCD7 }
```

This example shows the color as background, it is applied via the CSS property "background".

To optimize and compress your CSS code, you can use our [online CSS compressor and optimizer](#) based on csstidy. If you want to create a linear or radial gradient as background or border, check our [CSS Gradient Generator](#).

Hey! You found this booklet interesting? Support Converting Colors with the new Membership Option!

The pro membership hides all ads, plus gives you double the colors in the color bucket, and more awesome pro features!

[Learn more, Memberships starting at \\$2.50/m!](#)

**Follow me
on Twitter!**

@ConvertingColor