

Converting Colors

Hex(FFCCD8)

Have a look what the booklet for
Hex(FFCCD8) contains.

Hex(FFCCD8)	3
<i>Conversions</i>	4
<i>Details</i>	6
<i>Harmonies</i>	11
<i>Previews</i>	23
<i>Color Blindness Simulation</i>	26
<i>CSS Examples</i>	29

Color

Hex(FFCCD8)

Conversions

Conversions Part 1

Format	Color
Hex	FFCCD8
RGB	255, 204, 216
RGB Percent	100%, 80%, 85%
CMY	0.0000, 0.2000, 0.1529
CMYK	0.00, 0.20, 0.15, 0.00
HSL	346°, 100%, 90%
HSV	346°, 20%, 100%
XYZ	75.2275, 69.4036, 74.3971
YIQ	220.6170, 26.5440, 14.5440

Conversions

Conversions Part 2

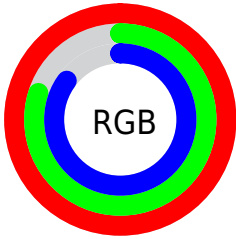
Format	Color
R _Y B	255, 204, 216
Decimal	16764120
CIE Lab	86.70, 19.82, 0.92
CIE LCh	87, 19.838, 2.658
Yxy	69.4036, 0.3435, 0.3169
Android (android.graphics.Color)	4294954200 (0xFFFFCCD8)
YUV	220.6170, -2.2762, 30.1539
Hunter-Lab	83.3088, 15.3944, 5.3686

Details

The Hex color **FFCCD8** is a light color, and the websafe version is hex **FFCCCC**. A complement of this color would be **CCFFF3**, and the grayscale version is **DDDDDD**.

A 20% lighter version of the original color is **FFFFFF**, and **C696A1** is the 20% darker color. If you saturate the color by 10%, you get **FFB3C5**, and if you desaturate by 10%, it is **FFE6EC**.

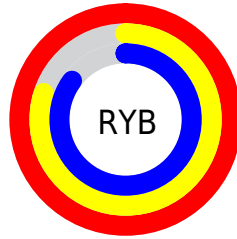
Distribution



Red (100%)

Green (80%)

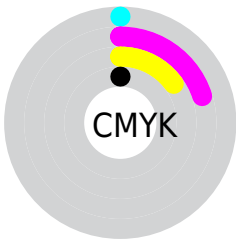
Blue (85%)



Red (100%)

Yellow (80%)

Blue (85%)

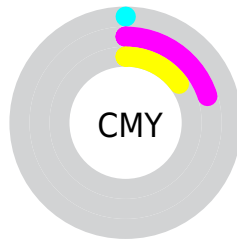


Cyan (0%)

Magenta (20%)

Yellow (15%)

Black (0%)



Cyan (0%)

Magenta (20%)

Yellow (15%)

Brightness & Saturation Gradients

These gradients show how the Hex color FFCCD8 changes by changing the brightness by 10 percent. The first figure shows a shift by +10% for each color and the second figure -10%.

Similar to the brightness gradients but the following saturation gradients show a change of the Hex color FFCCD8 by changing the saturation by 10% instead.

 FFCCD8

 FFCCD8

FFFFFF

 E2B0BC

 C696A1

 AA7C87

 8F626E

 754A55

 5C333E

 431D29

 2C0714

 0E0000

 FFCCD8

 FFCCD8

 FF809E

 FFE6EC

 FF99B1

FFFFFF

 FF809E

 FF668A

 FF4D77

 FF3363

 FF1950

 FF003C

Harmonies

Analogous

The Analogous color harmony consists of three colors that are next to each other on the color wheel.



F3CEEB



FFCCD8



FFCDC6

Triad

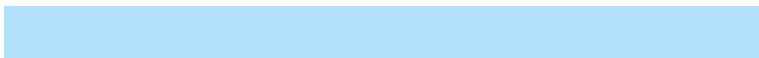
The Triadic color harmony groups three colors that are evenly spaced from another and form a triangle on the color wheel.



FFCCD8



D1DEB9



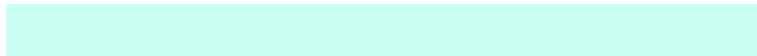
B1E0FA

Complementary

The Complementary color scheme is a pair of colors which are on the opposite of each other on the color wheel.



FFCCD8



CCFFF3

Split Complementary

Split-complementary colors differ from the complementary color scheme. The scheme consists of three colors, the original color and two neighbors of the complement color.



A7E3ED



FFCCD8



BCE2C7

Square

The Square scheme is like the rectangle color scheme, but the four colors are evenly spaced on the color wheel.



FFCCD8



E6D8B4



ACE4DA



C6DAFE

Rectangle

The Rectangle color scheme consists of four colors that form a rectangle on the color wheel.



FFCCD8



FBD0BC



ACE4DA



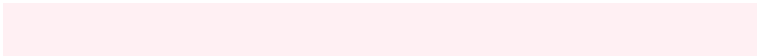
ACE1F6

Sweetspot

The Sweet Spot groups the original color and five complimentary colors.



FFCCD8



FFF0F3



F2CCFF



807779



000000



808080

Same Dimension

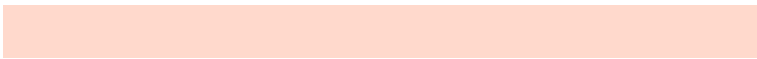
The Same Dimension uses a secret algorithm to generate beautiful new colors.



FFCCD8



FFC2D0



FFD9CC



807376



BF002D



40000F

Inverse Universe

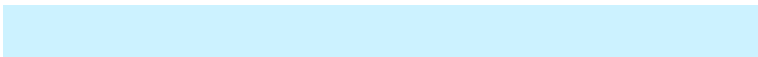
The Inverse Universe completely reimagines the original color for something new.



FFCCD8



FFC2D0



CCF2FF



807376



BF002D



40000F

Previews

White Background



This preview shows how the Hex color FFCCD8 looks on a white background.

Color Contrast Check

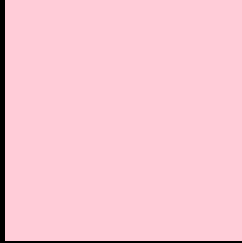
Large Text (above 18pt) WCAG AA × Fail

Any Text WCAG AA × Fail

Large Text (above 18pt) WCAG AAA × Fail

Any Text WCAG AAA × Fail

Black Background



This preview shows how the Hex color FFCCD8 looks on a black background.

Color Contrast Check

Large Text (above 18pt) WCAG AA ✓ Pass

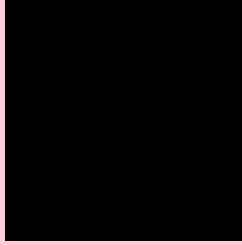
Any Text WCAG AA ✓ Pass

Large Text (above 18pt) WCAG AAA ✓ Pass

Any Text WCAG AAA ✓ Pass

If you want to check with other color combinations, try the [Color Contrast Checker](#).

Hex FFCCD8 Background



This preview shows how black text looks on a background with the Hex color FFCCD8.

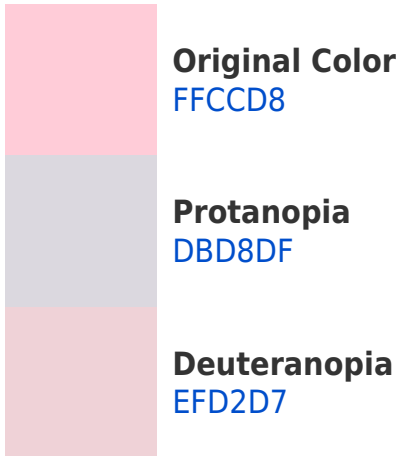


This preview shows how white text looks on a background with the Hex color FFCCD8.

Color Blindness Simulation

Color vision deficiency is a very complex topic, and I could not describe the different causes any better than Wikipedia does, so if you want to learn more, you should check out their [article about color blindness](#).

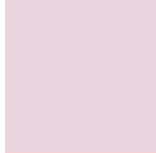
Dichromacy



Trichromacy



Original Color
FFCCD8



Protanomaly
E8D4DC



Deuteranomaly
F5D0D7

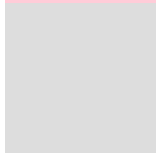


Tritanomaly
FFCCDA

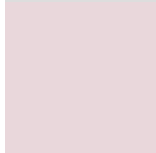
Monochromacy



Original Color
FFCCD8



Achromatopsia
DDDDDD



Achromatomaly
E9D7DB

CSS Examples

Text

The CSS property to change the color of the text to Hex FFCCD8 is called "color". The color property can be set on classes, ids or directly on the HTML element.

This example shows how text in the color #FFCCD8 looks like.

```
.text, #text, p{  
    color:#FFCCD8  
}
```

If you want to add a text shadow in that color use the text-shadow property, you can generate a text shadow directly with our [CSS Text Shadow Generator](#).

Here you see how black text with a 4 pixel #FFCCD8 colored shadow looks like.

```
.shadow{ text-shadow: 4px 4px 2px #FFCCD8
}
```

Border

The CSS property to change the border of an element to Hex FFCCD8 is called "border". The border property can be set on classes, ids or directly on the HTML element.

This example shows the color as border, it can be applied via the CSS property "border" or "border-color".

```
.border, #border, table{ border:4px solid
#FFCCD8 }
```

If only the border color should be changed use the property `border-color`.

```
.border{ border-color:#FFCCD8 }
```

If you want to add a box shadow in that color use:

Here you see how a box with a 4 pixel #FFCCD8 colored shadow looks like.

```
.boxshadow{ -moz-box-shadow:4px 4px 4px  
4px #FFCCD8; -webkit-box-shadow:4px 4px  
4px 4px #FFCCD8; box-shadow:4px 4px 4px  
4px #FFCCD8 }
```

Background

The CSS property to change the background color of an element to Hex FFCCD8 is called "background". The background property can be set on classes, ids or directly on the HTML element.

```
.background, #background, body{  
background:#FFCCD8 }
```

If only the background color should be changed can be used:

```
.background{ background-color:#FFCCD8 }
```

This example shows the color as background, it is applied via the CSS property "background".

To optimize and compress your CSS code, you can use our [online CSS compressor and optimizer](#) based on csstidy. If you want to create a linear or radial gradient as background or border, check our [CSS Gradient Generator](#).

Hey! You found this booklet interesting? Support Converting Colors with the new Membership Option!

The pro membership hides all ads, plus gives you double the colors in the color bucket, and more awesome pro features!

[Learn more, Memberships starting at \\$2.50/m!](#)

**Follow me
on Twitter!**

@ConvertingColor