

Converting Colors

Hex(FFCDD4)

Have a look what the booklet for
Hex(FFCDD4) contains.

| | |
|--|----|
| Hex(FFCDD4) | 3 |
| <i>Conversions</i> | 4 |
| <i>Details</i> | 6 |
| <i>Harmonies</i> | 11 |
| <i>Previews</i> | 23 |
| <i>Color Blindness Simulation</i> | 26 |
| <i>CSS Examples</i> | 29 |

Color

Hex(FFCDD4)

Conversions

Conversions Part 1

| Format | Color |
|-------------|----------------------------|
| Hex | FFCDD4 |
| RGB | 255, 205, 212 |
| RGB Percent | 100%, 80%, 83% |
| CMY | 0.0000, 0.1961, 0.1686 |
| CMYK | 0.00, 0.20, 0.17, 0.00 |
| HSL | 352°, 100%, 90% |
| HSV | 352°, 20%, 100% |
| XYZ | 74.9550, 69.6761, 71.7856 |
| YIQ | 220.7480, 27.5530, 12.7770 |

Conversions

Conversions Part 2

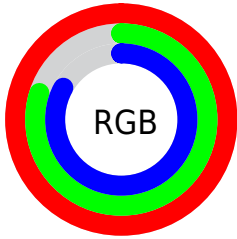
| Format | Color |
|-------------------------------------|-------------------------------|
| R_{YB} | 255, 205, 212 |
| Decimal | 16764372 |
| CIE _{Lab} | 86.84, 18.68, 3.24 |
| CIE _{LCh} | 87, 18.958, 9.832 |
| Yxy | 69.6761, 0.3463, 0.3220 |
| Android (android.graphics.Color) | 4294954452 (0xFFFFCDD4) |
| YUV | 220.7480, -4.3128, 30.0390 |
| Hunter-Lab | 83.4722, 14.2101, 7.4415 |

Details

The Hex color **FFCDD4** is a light color, and the websafe version is hex **FFCCCC**. A complement of this color would be **CDFFF8**, and the grayscale version is **DDDDDD**.

A 20% lighter version of the original color is **FFFFFF**, and **C6979D** is the 20% darker color. If you saturate the color by 10%, you get **FFB3BE**, and if you desaturate by 10%, it is **FFE7EA**.

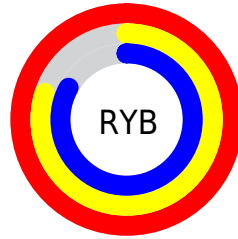
Distribution



Red (100%)

Green (80%)

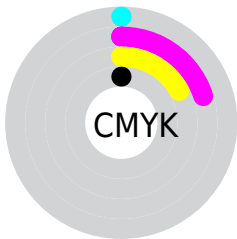
Blue (83%)



Red (100%)

Yellow (80%)

Blue (83%)

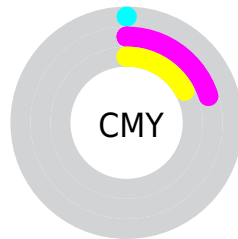


Cyan (0%)

Magenta (20%)

Yellow (17%)

Black (0%)



Cyan (0%)

Magenta (20%)

Yellow (17%)

Brightness & Saturation Gradients

These gradients show how the Hex color FFCDD4 changes by changing the brightness by 10 percent. The first figure shows a shift by +10% for each color and the second figure -10%.

Similar to the brightness gradients but the following saturation gradients show a change of the Hex color FFCDD4 by changing the saturation by 10% instead.

 FFCDD4

FFFFFF

 FFCDD4

 E2B1B8

 C6979D

 AA7D83

 8F636A

 754B52

 5B343B

 431E26

 2C0911

 0D0000

 FFCDD4

 FFCDD4

 FFB3BE

 FFE7EA

 FF9AA8

FFFFFF

 FF8192

 FF677C

 FF4E66

 FF3450

 FF1A3A

 FF0125

 FF0024

Harmonies

Analogous

The Analogous color harmony consists of three colors that are next to each other on the color wheel.



F6CEE6



FFCDD4



FECFC3

Triad

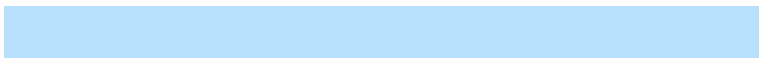
The Triadic color harmony groups three colors that are evenly spaced from another and form a triangle on the color wheel.



FFCDD4



CDDFBE



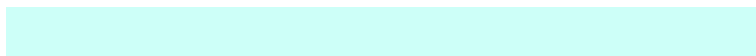
B8DFFB

Complementary

The Complementary color scheme is a pair of colors which are on the opposite of each other on the color wheel.



FFCDD4



CDFFF8

Split Complementary

Split-complementary colors differ from the complementary color scheme. The scheme consists of three colors, the original color and two neighbors of the complement color.



ABE3F0



FFCDD4



BAE3CC

Square

The Square scheme is like the rectangle color scheme, but the four colors are evenly spaced on the color wheel.



FFCDD4



E2DAB6



ADE4DF



CDD9FD

Rectangle

The Rectangle color scheme consists of four colors that form a rectangle on the color wheel.



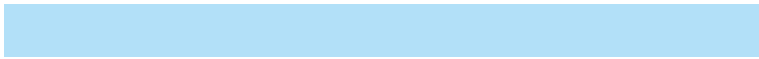
FFCDD4



F7D2BB



ADE4DF



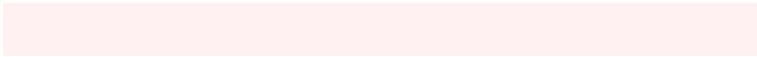
B2E0F8

Sweetspot

The Sweet Spot groups the original color and five complimentary colors.



FFCDD4



FFF0F2



F7CDFF



807778



000000



808080

Same Dimension

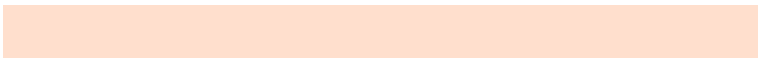
The Same Dimension uses a secret algorithm to generate beautiful new colors.



FFCDD4



FFC2CA



FFDFCD



807375



BF001B



400009

Inverse Universe

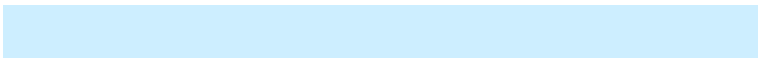
The Inverse Universe completely reimagines the original color for something new.



FFCDD4



FFC2CA



CDEEFF



807375



BF001B



400009

Previews

White Background



This preview shows how the Hex color FFCDD4 looks on a white background.

Color Contrast Check

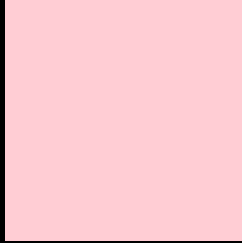
Large Text (above 18pt) WCAG AA × Fail

Any Text WCAG AA × Fail

Large Text (above 18pt) WCAG AAA × Fail

Any Text WCAG AAA × Fail

Black Background



This preview shows how the Hex color FFCDD4 looks on a black background.

Color Contrast Check

Large Text (above 18pt) WCAG AA ✓ Pass

Any Text WCAG AA ✓ Pass

Large Text (above 18pt) WCAG AAA ✓ Pass

Any Text WCAG AAA ✓ Pass

If you want to check with other color combinations, try the [Color Contrast Checker](#).

Hex FFCDD4 Background



This preview shows how black text looks on a background with the Hex color FFCDD4.

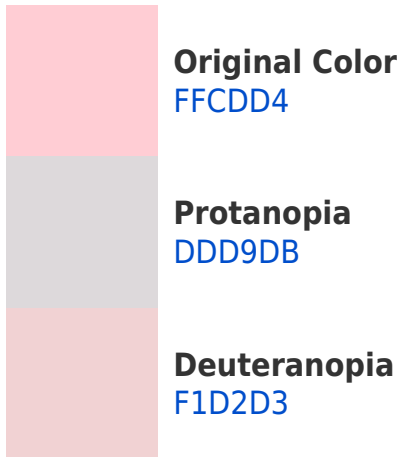


This preview shows how white text looks on a background with the Hex color FFCDD4.

Color Blindness Simulation

Color vision deficiency is a very complex topic, and I could not describe the different causes any better than Wikipedia does, so if you want to learn more, you should check out their [article about color blindness](#).

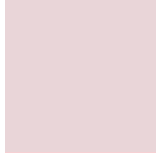
Dichromacy



Trichromacy



Original Color
FCDD4



Protanomaly
E9D5D8



Deuteranomaly
F6D0D3

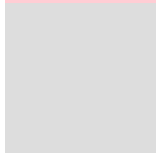


Tritanomaly
FFCCD9

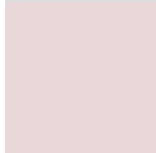
Monochromacy



Original Color
FCDD4



Achromatopsia
DDDDDD



Achromatomaly
E9D7DA

CSS Examples

Text

The CSS property to change the color of the text to Hex FFCDD4 is called "color". The color property can be set on classes, ids or directly on the HTML element.

This example shows how text in the color #FFCDD4 looks like.

```
.text, #text, p{  
    color:#FFCDD4  
}
```

If you want to add a text shadow in that color use the text-shadow property, you can generate a text shadow directly with our [CSS Text Shadow Generator](#).

Here you see how black text with a 4 pixel #FFCDD4 colored shadow looks like.

```
.shadow{ text-shadow: 4px 4px 2px #FFCDD4
}
```

Border

The CSS property to change the border of an element to Hex FFCDD4 is called "border". The border property can be set on classes, ids or directly on the HTML element.

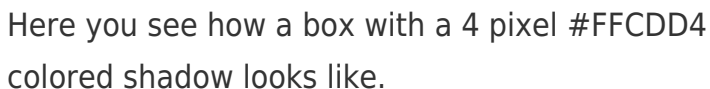
This example shows the color as border, it can be applied via the CSS property "border" or "border-color".

```
.border, #border, table{ border:4px solid
#FFCDD4 }
```

If only the border color should be changed use the property `border-color`.

```
.border{ border-color:#FFCDD4 }
```

If you want to add a box shadow in that color use:



Here you see how a box with a 4 pixel #FFCDD4 colored shadow looks like.

```
.boxshadow{ -moz-box-shadow:4px 4px 4px  
4px #FFCDD4; -webkit-box-shadow:4px 4px  
4px 4px #FFCDD4; box-shadow:4px 4px 4px  
4px #FFCDD4 }
```

Background

The CSS property to change the background color of an element to Hex FFCDD4 is called "background". The background property can be set on classes, ids or directly on the HTML element.

```
.background, #background, body{  
background:#FFCDD4 }
```

If only the background color should be changed can be used:

```
.background{ background-color:#FFCDD4 }
```

This example shows the color as background, it is applied via the CSS property "background".

To optimize and compress your CSS code, you can use our [online CSS compressor and optimizer](#) based on csstidy. If you want to create a linear or radial gradient as background or border, check our [CSS Gradient Generator](#).

Hey! You found this booklet interesting? Support Converting Colors with the new Membership Option!

The pro membership hides all ads, plus gives you double the colors in the color bucket, and more awesome pro features!

[Learn more, Memberships starting at \\$2.50/m!](#)

**Follow me
on Twitter!**

@ConvertingColor