

Converting Colors

Hex(FFCDDC)

Have a look what the booklet for
Hex(FFCDDC) contains.

Hex(FFCDDC)	3
<i>Conversions</i>	4
<i>Details</i>	6
<i>Harmonies</i>	11
<i>Previews</i>	23
<i>Color Blindness Simulation</i>	26
<i>CSS Examples</i>	29

Color

Hex(FFCDDC)

Conversions

Conversions Part 1

Format	Color
Hex	FFCDDC
RGB	255, 205, 220
RGB Percent	100%, 80%, 86%
CMY	0.0000, 0.1961, 0.1373
CMYK	0.00, 0.20, 0.14, 0.00
HSL	342°, 100%, 90%
HSV	342°, 20%, 100%
XYZ	75.9896, 70.0900, 77.2338
YIQ	221.6600, 24.9850, 15.2650

Conversions

Conversions Part 2

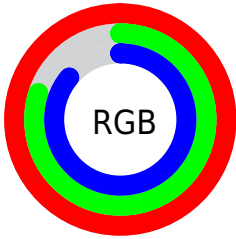
Format	Color
R _Y B	255, 205, 220
Decimal	16764380
CIE Lab	87.04, 19.92, -0.71
CIE LCh	87, 19.932, 357.961
Yxy	70.0900, 0.3403, 0.3139
Android (android.graphics.Color)	4294954460 (0xFFFFCDDC)
YUV	221.6600, -0.8184, 29.2392
Hunter-Lab	83.7197, 15.5089, 3.9072

Details

The Hex color **FFCDDC** is a light color, and the websafe version is hex **FFCCCC**. A complement of this color would be **CDFFF0**, and the grayscale version is **DEDEDE**.

A 20% lighter version of the original color is **FFFFFF**, and **C697A5** is the 20% darker color. If you saturate the color by 10%, you get **FFB3CA**, and if you desaturate by 10%, it is **FFE7EE**.

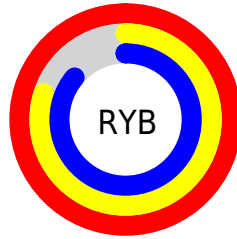
Distribution



Red (100%)

Green (80%)

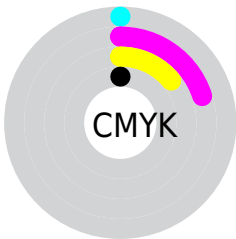
Blue (86%)



Red (100%)

Yellow (80%)

Blue (86%)

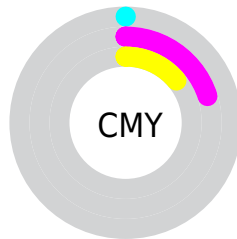


Cyan (0%)

Magenta (20%)

Yellow (14%)

Black (0%)



Cyan (0%)

Magenta (20%)

Yellow (14%)

Brightness & Saturation Gradients

These gradients show how the Hex color FFCDDC changes by changing the brightness by 10 percent. The first figure shows a shift by +10% for each color and the second figure -10%.

Similar to the brightness gradients but the following saturation gradients show a change of the Hex color FFCDDC by changing the saturation by 10% instead.

 FFCDDC

FFFFFF

 FFCDDC

 E2B1C0

 C697A5

 AA7D8B

 8F6371

 754B59

 5C3442

 431E2C

 2C0817

 110000

 FFCDDC

 FFCDDC

 FFB3CA

 FFE7EE

 FF9AB8

FFFFFF

 FF81A6

 FF6795

 FF4E83

 FF3471

 FF1A5F

 FF014D

 FF004D

Harmonies

Analogous

The Analogous color harmony consists of three colors that are next to each other on the color wheel.



F2D0EE



FFCDDC



FFCEC9

Triad

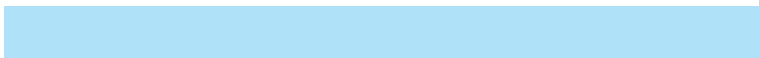
The Triadic color harmony groups three colors that are evenly spaced from another and form a triangle on the color wheel.



FFCDDC



D6DEB8



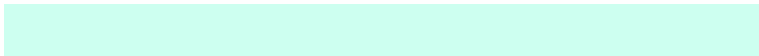
AFE1F9

Complementary

The Complementary color scheme is a pair of colors which are on the opposite of each other on the color wheel.



FFCDDC



CDFFFO

Split Complementary

Split-complementary colors differ from the complementary color scheme. The scheme consists of three colors, the original color and two neighbors of the complement color.



A8E5EB



FFCDDC



C0E3C5

Square

The Square scheme is like the rectangle color scheme, but the four colors are evenly spaced on the color wheel.



FFCDDC



EAD8B4



AFE5D8



C3DCFF

Rectangle

The Rectangle color scheme consists of four colors that form a rectangle on the color wheel.



FFCDDC



FED0BF



AFE5D8



ABE3F5

Sweetspot

The Sweet Spot groups the original color and five complimentary colors.



FFCDDC



FFF0F4



F0CDEE



807779



000000



808080

Same Dimension

The Same Dimension uses a secret algorithm to generate beautiful new colors.



FFCDDC



FFC2D4



FFD7CD



807377



BF0039



400013

Inverse Universe

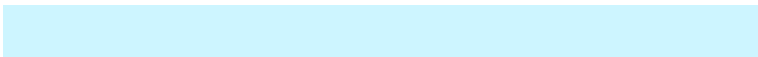
The Inverse Universe completely reimagines the original color for something new.



FFCDDC



FFC2D4



CDF5FF



807377



BF0039



400013

Previews

White Background



This preview shows how the Hex color FFCDDC looks on a white background.

Color Contrast Check

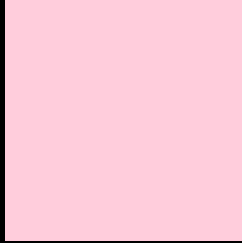
Large Text (above 18pt) WCAG AA × Fail

Any Text WCAG AA × Fail

Large Text (above 18pt) WCAG AAA × Fail

Any Text WCAG AAA × Fail

Black Background



This preview shows how the Hex color FFCDDC looks on a black background.

Color Contrast Check

Large Text (above 18pt) WCAG AA ✓ Pass

Any Text WCAG AA ✓ Pass

Large Text (above 18pt) WCAG AAA ✓ Pass

Any Text WCAG AAA ✓ Pass

If you want to check with other color combinations, try the [Color Contrast Checker](#).

Hex FFCDDC Background



This preview shows how black text looks on a background with the Hex color FFCDDC.

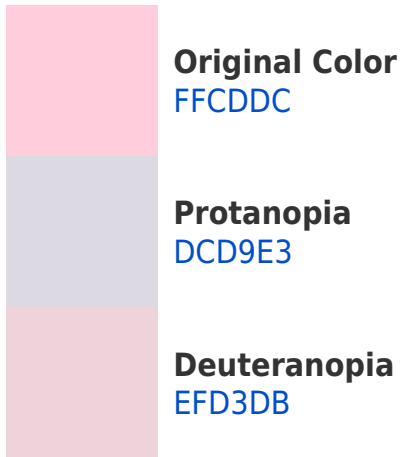


This preview shows how white text looks on a background with the Hex color FFCDDC.

Color Blindness Simulation

Color vision deficiency is a very complex topic, and I could not describe the different causes any better than Wikipedia does, so if you want to learn more, you should check out their [article about color blindness](#).

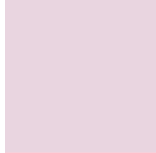
Dichromacy



Trichromacy



Original Color
FCDDC



Protanomaly
E9D5E0



Deuteranomaly
F5D1DB

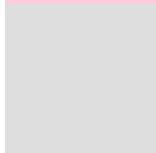


Tritanomaly
FCDDD

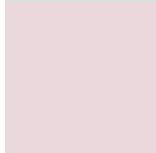
Monochromacy



Original Color
FCDDC



Achromatopsia
DEDEDE



Achromatomaly
EAD8DD

CSS Examples

Text

The CSS property to change the color of the text to Hex FFCDDC is called "color". The color property can be set on classes, ids or directly on the HTML element.

This example shows how text in the color #FFCDDC looks like.

```
.text, #text, p{  
    color:#FFCDDC  
}
```

If you want to add a text shadow in that color use the text-shadow property, you can generate a text shadow directly with our [CSS Text Shadow Generator](#).

Here you see how black text with a 4 pixel #FFCDDC colored shadow looks like.

```
.shadow{ text-shadow: 4px 4px 2px #FFCDDC
}
```

Border

The CSS property to change the border of an element to Hex FFCDDC is called "border". The border property can be set on classes, ids or directly on the HTML element.

This example shows the color as border, it can be applied via the CSS property "border" or "border-color".

```
.border, #border, table{ border:4px solid
#FFCDDC }
```

If only the border color should be changed use the property `border-color`.

```
.border{ border-color:#FFCDDC }
```

If you want to add a box shadow in that color use:

Here you see how a box with a 4 pixel #FFCDDC colored shadow looks like.

```
.boxshadow{ -moz-box-shadow:4px 4px 4px  
4px #FFCDDC; -webkit-box-shadow:4px 4px  
4px 4px #FFCDDC; box-shadow:4px 4px 4px  
4px #FFCDDC }
```

Background

The CSS property to change the background color of an element to Hex FFCDDC is called "background". The background property can be set on classes, ids or directly on the HTML element.

```
.background, #background, body{  
background:#FFCDDC }
```

If only the background color should be changed can be used:

```
.background{ background-color:#FFCDDC }
```

This example shows the color as background, it is applied via the CSS property "background".

To optimize and compress your CSS code, you can use our [online CSS compressor and optimizer](#) based on csstidy. If you want to create a linear or radial gradient as background or border, check our [CSS Gradient Generator](#).

Hey! You found this booklet interesting? Support Converting Colors with the new Membership Option!

The pro membership hides all ads, plus gives you double the colors in the color bucket, and more awesome pro features!

[Learn more, Memberships starting at \\$2.50/m!](#)

**Follow me
on Twitter!**

@ConvertingColor