

Converting Colors

Hex(FFCFD8)

Have a look what the booklet for
Hex(FFCFD8) contains.

Hex(FFCFD8)	3
<i>Conversions</i>	4
<i>Details</i>	6
<i>Harmonies</i>	11
<i>Previews</i>	23
<i>Color Blindness Simulation</i>	26
<i>CSS Examples</i>	29

Color

Hex(FFCFD8)

Conversions

Conversions Part 1

Format	Color
Hex	FFCFD8
RGB	255, 207, 216
RGB Percent	100%, 81%, 85%
CMY	0.0000, 0.1882, 0.1529
CMYK	0.00, 0.19, 0.15, 0.00
HSL	349°, 100%, 91%
HSV	349°, 19%, 100%
XYZ	75.9475, 70.8435, 74.6370
YIQ	222.3780, 25.7190, 12.9750

Conversions

Conversions Part 2

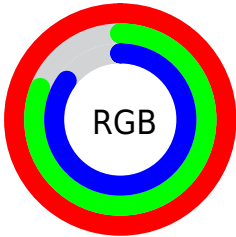
Format	Color
R_{YB}	255, 207, 216
Decimal	16764888
CIE _{Lab}	87.41, 18.25, 1.95
CIE _{LCh}	87, 18.351, 6.090
Yxy	70.8435, 0.3430, 0.3199
Android (android.graphics.Color)	4294954968 (0xFFFFCFD8)
YUV	222.3780, -3.1444, 28.6095
Hunter-Lab	84.1686, 13.7701, 6.3422

Details

The Hex color **FFCFD8** is a light color, and the websafe version is hex **FFCCCC**. A complement of this color would be **CFFFF6**, and the grayscale version is **DEDEDE**.

A 20% lighter version of the original color is **FFFFFF**, and **C699A1** is the 20% darker color. If you saturate the color by 10%, you get **FFB5C3**, and if you desaturate by 10%, it is **FFE9ED**.

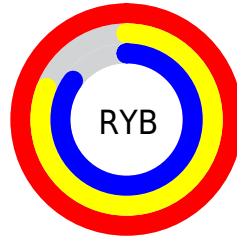
Distribution



Red (100%)

Green (81%)

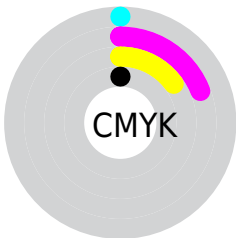
Blue (85%)



Red (100%)

Yellow (81%)

Blue (85%)

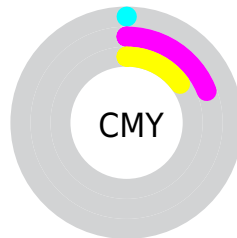


Cyan (0%)

Magenta (19%)

Yellow (15%)

Black (0%)



Cyan (0%)

Magenta (19%)

Yellow (15%)

Brightness & Saturation Gradients

These gradients show how the Hex color FFCFD8 changes by changing the brightness by 10 percent. The first figure shows a shift by +10% for each color and the second figure -10%.

Similar to the brightness gradients but the following saturation gradients show a change of the Hex color FFCFD8 by changing the saturation by 10% instead.

 FFCFD8

FFFFFF

 FFCFD8

 E2B3BC

 C699A1

 AA7E87

 8F656E

 754D55

 5C363E

 432029

 2C0B14

 110000

 FFCFD8

 FFCFD8

 FFB5C3

 FFE9ED

 FF9CAF

FFFFFF

 FF839A

 FF6985

 FF5070

 FF365C

 FF1C47

 FF0332

 FF0030

Harmonies

Analogous

The Analogous color harmony consists of three colors that are next to each other on the color wheel.



F5D1EA



FFCFD8



FFD1C7

Triad

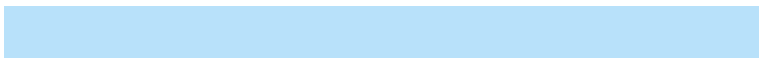
The Triadic color harmony groups three colors that are evenly spaced from another and form a triangle on the color wheel.



FFCFD8



D2E0BF



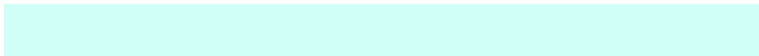
B8E1FA

Complementary

The Complementary color scheme is a pair of colors which are on the opposite of each other on the color wheel.



FFCFD8



CFFFF6

Split Complementary

Split-complementary colors differ from the complementary color scheme. The scheme consists of three colors, the original color and two neighbors of the complement color.



AEE4EF



FFCFD8



BEE4CC

Square

The Square scheme is like the rectangle color scheme, but the four colors are evenly spaced on the color wheel.



FFCFD8



E5DBB9



B1E5DE



CCDBFD

Rectangle

The Rectangle color scheme consists of four colors that form a rectangle on the color wheel.



FFCFD8



FAD4BF



B1E5DE



B4E2F7

Sweetspot

The Sweet Spot groups the original color and five complimentary colors.



FFCFD8



FFF0F3



F5CFFF



807778



000000



808080

Same Dimension

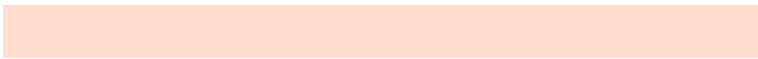
The Same Dimension uses a secret algorithm to generate beautiful new colors.



FFCFD8



FFC4CF



FFDDCF



807375



BF0024



40000C

Inverse Universe

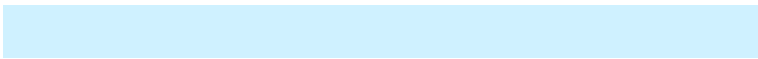
The Inverse Universe completely reimagines the original color for something new.



FFCFD8



FFC4CF



CFF1FF



807375



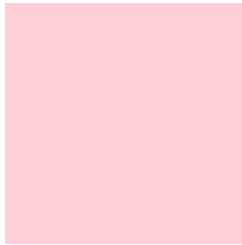
BF0024



40000C

Previews

White Background



This preview shows how the Hex color FFCFD8 looks on a white background.

Color Contrast Check

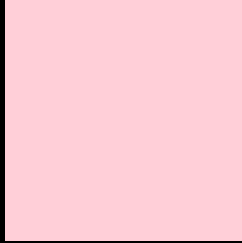
Large Text (above 18pt) WCAG AA × Fail

Any Text WCAG AA × Fail

Large Text (above 18pt) WCAG AAA × Fail

Any Text WCAG AAA × Fail

Black Background



This preview shows how the Hex color FFCFD8 looks on a black background.

Color Contrast Check

Large Text (above 18pt) WCAG AA ✓ Pass

Any Text WCAG AA ✓ Pass

Large Text (above 18pt) WCAG AAA ✓ Pass

Any Text WCAG AAA ✓ Pass

If you want to check with other color combinations, try the [Color Contrast Checker](#).

Hex FFCFD8 Background



This preview shows how black text looks on a background with the Hex color FFCFD8.

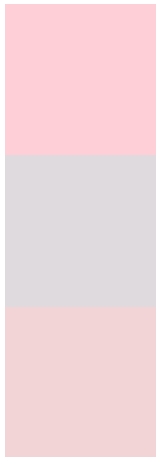


This preview shows how white text looks on a background with the Hex color FFCFD8.

Color Blindness Simulation

Color vision deficiency is a very complex topic, and I could not describe the different causes any better than Wikipedia does, so if you want to learn more, you should check out their [article about color blindness](#).

Dichromacy



Original Color
FFCFD8

Protanopia
DEDADE

Deuteranopia
F2D4D7

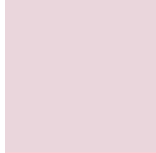


Tritanopia
FFCEDE

Trichromacy



Original Color
FFCFD8



Protanomaly
EAD6DC



Deuteranomaly
F7D2D7

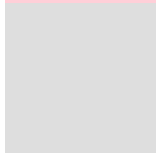


Tritanomaly
FFCEDC

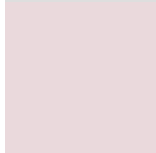
Monochromacy



Original Color
FFCFD8



Achromatopsia
DEDEDE



Achromatomaly
EAD9DC

CSS Examples

Text

The CSS property to change the color of the text to Hex FFCFD8 is called "color". The color property can be set on classes, ids or directly on the HTML element.

This example shows how text in the color #FFCFD8 looks like.

```
.text, #text, p{  
    color:#FFCFD8  
}
```

If you want to add a text shadow in that color use the text-shadow property, you can generate a text shadow directly with our [CSS Text Shadow Generator](#).

Here you see how black text with a 4 pixel #FFCFD8 colored shadow looks like.

```
.shadow{ text-shadow: 4px 4px 2px #FFCFD8
}
```

Border

The CSS property to change the border of an element to Hex FFCFD8 is called "border". The border property can be set on classes, ids or directly on the HTML element.

This example shows the color as border, it can be applied via the CSS property "border" or "border-color".

```
.border, #border, table{ border:4px solid
#FFCFD8 }
```

If only the border color should be changed use the property `border-color`.

```
.border{ border-color:#FFCFD8 }
```

If you want to add a box shadow in that color use:

Here you see how a box with a 4 pixel #FFCFD8 colored shadow looks like.

```
.boxshadow{ -moz-box-shadow:4px 4px 4px  
4px #FFCFD8; -webkit-box-shadow:4px 4px  
4px 4px #FFCFD8; box-shadow:4px 4px 4px  
4px #FFCFD8 }
```

Background

The CSS property to change the background color of an element to Hex FFCFD8 is called "background". The background property can be set on classes, ids or directly on the HTML element.

```
.background, #background, body{  
background:#FFCFD8 }
```

If only the background color should be changed can be used:

```
.background{ background-color:#FFCFD8 }
```

This example shows the color as background, it is applied via the CSS property "background".

To optimize and compress your CSS code, you can use our [online CSS compressor and optimizer](#) based on csstidy. If you want to create a linear or radial gradient as background or border, check our [CSS Gradient Generator](#).

Hey! You found this booklet interesting? Support Converting Colors with the new Membership Option!

The pro membership hides all ads, plus gives you double the colors in the color bucket, and more awesome pro features!

[Learn more, Memberships starting at \\$2.50/m!](#)

**Follow me
on Twitter!**

@ConvertingColor