

Converting Colors

Hex(FFD1EA)

Have a look what the booklet for
Hex(FFD1EA) contains.

Hex(FFD1EA)	3
<i>Conversions</i>	4
<i>Details</i>	6
<i>Harmonies</i>	11
<i>Previews</i>	23
<i>Color Blindness Simulation</i>	26
<i>CSS Examples</i>	29

Color

Hex(FFD1EA)

Conversions

Conversions Part 1

Format	Color
Hex	FFD1EA
RGB	255, 209, 234
RGB Percent	100%, 82%, 92%
CMY	0.0000, 0.1804, 0.0824
CMYK	0.00, 0.18, 0.08, 0.00
HSL	327°, 100%, 91%
HSV	327°, 18%, 100%
XYZ	78.8917, 72.8014, 87.7359
YIQ	225.6040, 19.3910, 17.5270

Conversions

Conversions Part 2

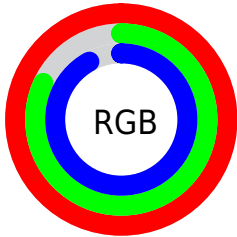
Format	Color
R _Y B	255, 209, 234
Decimal	16765418
CIE Lab	88.35, 20.10, -6.19
CIE LCh	88, 21.030, 342.879
Yxy	72.8014, 0.3295, 0.3041
Android (android.graphics.Color)	4294955498 (0xFFFFD1EA)
YUV	225.6040, 4.1392, 25.7803
Hunter-Lab	85.3238, 15.7274, -1.2395

Details

The Hex color **FFD1EA** is a light color, and the websafe version is hex **FFCCCC**. A complement of this color would be **D1FFE6**, and the grayscale version is **E2E2E2**.

A 20% lighter version of the original color is **FFFFFF**, and **C69AB2** is the 20% darker color. If you saturate the color by 10%, you get **FFB7DE**, and if you desaturate by 10%, it is **FFEBF6**.

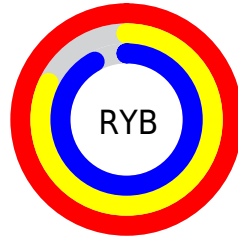
Distribution



Red (100%)

Green (82%)

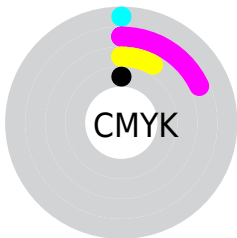
Blue (92%)



Red (100%)

Yellow (82%)

Blue (92%)

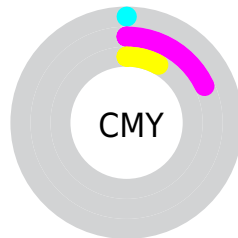


Cyan (0%)

Magenta (18%)

Yellow (8%)

Black (0%)



Cyan (0%)

Magenta (18%)

Yellow (8%)

Brightness & Saturation Gradients

These gradients show how the Hex color FFD1EA changes by changing the brightness by 10 percent. The first figure shows a shift by +10% for each color and the second figure -10%.

Similar to the brightness gradients but the following saturation gradients show a change of the Hex color FFD1EA by changing the saturation by 10% instead.

 FFD1EA

FFFFFF

 FFD1EA

 E2B5CE

 C69AB2

 AA8098

 90677E

 764F65

 5C374D

 442136

 2D0C21

 180009

 FFD1EA

 FFD1EA

 FFB7DE

 FFEBF6

 FF9ED3

FFFFFF

 FF84C7

 FF6BBB

 FF52B0

 FF38A4

 FF1E99

 FF058D

 FF008B

Harmonies

Analogous

The Analogous color harmony consists of three colors that are next to each other on the color wheel.



ECD6FB



FFD1EA



FFD0D6

Triad

The Triadic color harmony groups three colors that are evenly spaced from another and form a triangle on the color wheel.



FFD1EA



E4DFB7



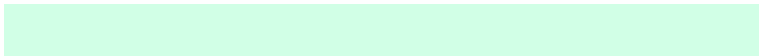
AAE8F8

Complementary

The Complementary color scheme is a pair of colors which are on the opposite of each other on the color wheel.



FFD1EA



D1FFE6

Split Complementary

Split-complementary colors differ from the complementary color scheme. The scheme consists of three colors, the original color and two neighbors of the complement color.



AAE9E6



FFD1EA



CDE5C0

Square

The Square scheme is like the rectangle color scheme, but the four colors are evenly spaced on the color wheel.



FFD1EA



F8D8B8



B8E8D1



BAE3FF

Rectangle

The Rectangle color scheme consists of four colors that form a rectangle on the color wheel.



FFD1EA



FFD1C9



B8E8D1



A8E8F3

Sweetspot

The Sweet Spot groups the original color and five complimentary colors.



FFD1EA



FFF2F9



E6D1FF



80787C



000000



808080

Same Dimension

The Same Dimension uses a secret algorithm to generate beautiful new colors.



FFD1EA



FFC7E5



FFD1D3



80737A



BF0068



400023

Inverse Universe

The Inverse Universe completely reimagines the original color for something new.



FFD1EA



FFC7E5



D1FFFD



80737A



BF0068



400023

Previews

White Background



This preview shows how the Hex color FFD1EA looks on a white background.

Color Contrast Check

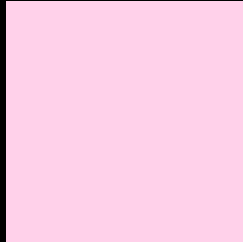
Large Text (above 18pt) WCAG AA × Fail

Any Text WCAG AA × Fail

Large Text (above 18pt) WCAG AAA × Fail

Any Text WCAG AAA × Fail

Black Background



This preview shows how the Hex color FFD1EA looks on a black background.

Color Contrast Check

Large Text (above 18pt) WCAG AA ✓ Pass

Any Text WCAG AA ✓ Pass

Large Text (above 18pt) WCAG AAA ✓ Pass

Any Text WCAG AAA ✓ Pass

If you want to check with other color combinations, try the [Color Contrast Checker](#).

Hex FFD1EA Background



This preview shows how black text looks on a background with the Hex color FFD1EA.



This preview shows how white text looks on a background with the Hex color FFD1EA.

Color Blindness Simulation

Color vision deficiency is a very complex topic, and I could not describe the different causes any better than Wikipedia does, so if you want to learn more, you should check out their [article about color blindness](#).

Dichromacy



Original Color
FFD1EA

Protanopia
DCDDF1

Deuteranopia
EFD7E9

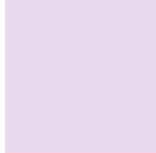


Tritanopia
FED2E3

Trichromacy



Original Color
FFD1EA



Protanomaly
E9D9EE



Deuteranomaly
F5D5E9

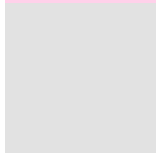


Tritanomaly
FED2E6

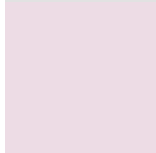
Monochromacy



Original Color
FFD1EA



Achromatopsia
E2E2E2



Achromatomaly
EDDCE5

CSS Examples

Text

The CSS property to change the color of the text to Hex FFD1EA is called "color". The color property can be set on classes, ids or directly on the HTML element.

This example shows how text in the color #FFD1EA looks like.

```
.text, #text, p{  
    color:#FFD1EA  
}
```

If you want to add a text shadow in that color use the text-shadow property, you can generate a text shadow directly with our [CSS Text Shadow Generator](#).

Here you see how black text with a 4 pixel #FFD1EA colored shadow looks like.

```
.shadow{ text-shadow: 4px 4px 2px #FFD1EA
}
```

Border

The CSS property to change the border of an element to Hex FFD1EA is called "border". The border property can be set on classes, ids or directly on the HTML element.

This example shows the color as border, it can be applied via the CSS property "border" or "border-color".

```
.border, #border, table{ border:4px solid
#FFD1EA }
```

If only the border color should be changed use the property `border-color`.

```
.border{ border-color:#FFD1EA }
```

If you want to add a box shadow in that color use:

Here you see how a box with a 4 pixel #FFD1EA colored shadow looks like.

```
.boxshadow{ -moz-box-shadow:4px 4px 4px  
4px #FFD1EA; -webkit-box-shadow:4px 4px  
4px 4px #FFD1EA; box-shadow:4px 4px 4px  
4px #FFD1EA }
```

Background

The CSS property to change the background color of an element to Hex FFD1EA is called "background". The background property can be set on classes, ids or directly on the HTML element.

```
.background, #background, body{  
background:#FFD1EA }
```

If only the background color should be changed can be used:

```
.background{ background-color:#FFD1EA }
```

This example shows the color as background, it is applied via the CSS property "background".

To optimize and compress your CSS code, you can use our [online CSS compressor and optimizer](#) based on csstidy. If you want to create a linear or radial gradient as background or border, check our [CSS Gradient Generator](#).

Hey! You found this booklet interesting? Support Converting Colors with the new Membership Option!

The pro membership hides all ads, plus gives you double the colors in the color bucket, and more awesome pro features!

[Learn more, Memberships starting at \\$2.50/m!](#)

**Follow me
on Twitter!**

@ConvertingColor