

Converting Colors

Hex(FFD2FA)

Have a look what the booklet for
Hex(FFD2FA) contains.

Hex(FFD2FA)	3
<i>Conversions</i>	4
<i>Details</i>	6
<i>Harmonies</i>	11
<i>Previews</i>	23
<i>Color Blindness Simulation</i>	26
<i>CSS Examples</i>	29

Color

Hex(FFD2FA)

Conversions

Conversions Part 1

Format	Color
Hex	FFD2FA
RGB	255, 210, 250
RGB Percent	100%, 82%, 98%
CMY	0.0000, 0.1765, 0.0196
CMYK	0.00, 0.18, 0.02, 0.00
HSL	307°, 100%, 91%
HSV	307°, 18%, 100%
XYZ	81.5419, 74.2553, 100.4775
YIQ	228.0150, 13.9800, 21.9800

Conversions

Conversions Part 2

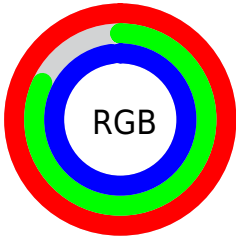
Format	Color
R _Y B	255, 210, 250
Decimal	16765690
CIE Lab	89.04, 22.33, -13.61
CIE LCh	89, 26.147, 328.642
Yxy	74.2553, 0.3182, 0.2897
Android (android.graphics.Color)	4294955770 (0xFFFFD2FA)
YUV	228.0150, 10.8386, 23.6658
Hunter-Lab	86.1715, 18.1098, -8.8131

Details

The Hex color **FFD2FA** is a light color, and the websafe version is hex **FFCCFF**. A complement of this color would be **D2FFD7**, and the grayscale version is **E4E4E4**.

A 20% lighter version of the original color is **FFFFFF**, and **C69BC1** is the 20% darker color. If you saturate the color by 10%, you get **FFB8F7**, and if you desaturate by 10%, it is **FFEBFD**.

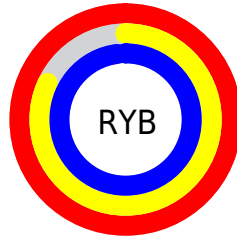
Distribution



Red (100%)

Green (82%)

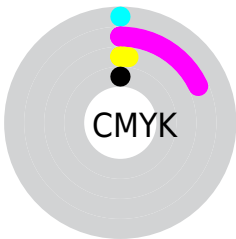
Blue (98%)



Red (100%)

Yellow (82%)

Blue (98%)

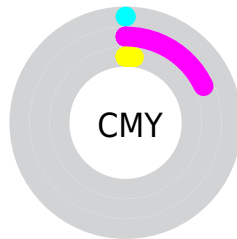


Cyan (0%)

Magenta (18%)

Yellow (2%)

Black (0%)



Cyan (0%)

Magenta (18%)

Yellow (2%)

Brightness & Saturation Gradients

These gradients show how the Hex color FFD2FA changes by changing the brightness by 10 percent. The first figure shows a shift by +10% for each color and the second figure -10%.

Similar to the brightness gradients but the following saturation gradients show a change of the Hex color FFD2FA by changing the saturation by 10% instead.

 FFD2FA

FFFFFF

 FFD2FA

 E2B6DD

 C69BC1

 AA81A6

 90688C

 764F72

 5D385A

 442242

 2D0C2C

 1A0018

 FFD2FA

 FFD2FA

 FFB8F7

 FFEBCD

 FF9FF4

FFFFFF

 FF85F2

 FF6CEF

 FF52EC

 FF39E9

 FF1FE6

 FF06E3

 FF00E3

Harmonies

Analogous

The Analogous color harmony consists of three colors that are next to each other on the color wheel.



E2DAFF



FFD2FA



FFCEE2

Triad

The Triadic color harmony groups three colors that are evenly spaced from another and form a triangle on the color wheel.



FFD2FA



F4DEAE



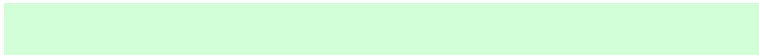
9AEDF7

Complementary

The Complementary color scheme is a pair of colors which are on the opposite of each other on the color wheel.



FFD2FA



D2FFD7

Split Complementary

Split-complementary colors differ from the complementary color scheme. The scheme consists of three colors, the original color and two neighbors of the complement color.



A4EEDE



FFD2FA



D9E5B4

Square

The Square scheme is like the rectangle color scheme, but the four colors are evenly spaced on the color wheel.



FFD2FA



FFD5B6



BCEBC5



A5E9FF

Rectangle

The Rectangle color scheme consists of four colors that form a rectangle on the color wheel.



FFD2FA



FFCED1



BCEBC5



9BEEEF

Sweetspot

The Sweet Spot groups the original color and five complimentary colors.



FFD2FA



FFF2FE



D6D2FF



80787F



000000



808080

Same Dimension

The Same Dimension uses a secret algorithm to generate beautiful new colors.



FFD2FA



FFC9F9



FFD2E4



80737E



BF00AA



400039

Inverse Universe

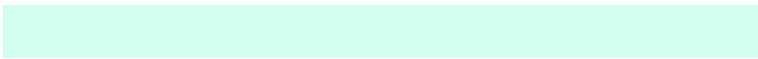
The Inverse Universe completely reimagines the original color for something new.



FFD2FA



FFC9F9



D2FFED



80737E



BF00AA



400039

Previews

White Background



This preview shows how the Hex color FFD2FA looks on a white background.

Color Contrast Check

Large Text (above 18pt) WCAG AA × Fail

Any Text WCAG AA × Fail

Large Text (above 18pt) WCAG AAA × Fail

Any Text WCAG AAA × Fail

Black Background



Color Contrast Check

Large Text (above 18pt) WCAG AA ✓ Pass

Any Text WCAG AA ✓ Pass

Large Text (above 18pt) WCAG AAA ✓ Pass

Any Text WCAG AAA ✓ Pass

If you want to check with other color combinations, try the [Color Contrast Checker](#).

Hex FFD2FA Background



This preview shows how black text looks on a background with the Hex color FFD2FA.

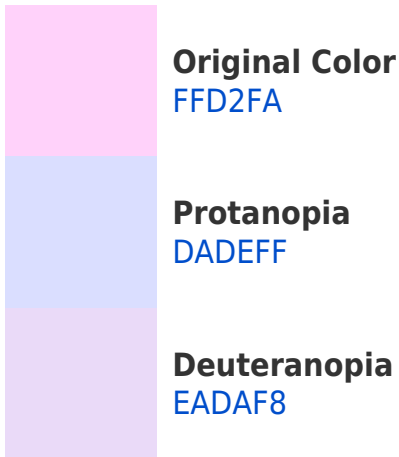


This preview shows how white text looks on a background with the Hex color FFD2FA.

Color Blindness Simulation

Color vision deficiency is a very complex topic, and I could not describe the different causes any better than Wikipedia does, so if you want to learn more, you should check out their [article about color blindness](#).

Dichromacy



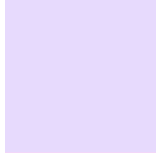


Tritanopia
FCD5E6

Trichromacy



Original Color
FFD2FA



Protanomaly
E7DAFD



Deuteranomaly
F2D7F9

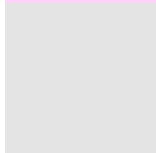


Tritanomaly
FDD4ED

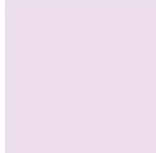
Monochromacy



Original Color
FFD2FA



Achromatopsia
E4E4E4



Achromatomaly
EEDDEC

CSS Examples

Text

The CSS property to change the color of the text to Hex FFD2FA is called "color". The color property can be set on classes, ids or directly on the HTML element.

This example shows how text in the color #FFD2FA looks like.

```
.text, #text, p{  
    color:#FFD2FA  
}
```

If you want to add a text shadow in that color use the text-shadow property, you can generate a text shadow directly with our [CSS Text Shadow Generator](#).

Here you see how black text with a 4 pixel #FFD2FA colored shadow looks like.

```
.shadow{ text-shadow: 4px 4px 2px #FFD2FA
}
```

Border

The CSS property to change the border of an element to Hex FFD2FA is called "border". The border property can be set on classes, ids or directly on the HTML element.

This example shows the color as border, it can be applied via the CSS property "border" or "border-color".

```
.border, #border, table{ border:4px solid
#FFD2FA }
```

If only the border color should be changed use the property `border-color`.

```
.border{ border-color:#FFD2FA }
```

If you want to add a box shadow in that color use:

Here you see how a box with a 4 pixel #FFD2FA colored shadow looks like.

```
.boxshadow{ -moz-box-shadow:4px 4px 4px  
4px #FFD2FA; -webkit-box-shadow:4px 4px  
4px 4px #FFD2FA; box-shadow:4px 4px 4px  
4px #FFD2FA }
```

Background

The CSS property to change the background color of an element to Hex FFD2FA is called "background". The background property can be set on classes, ids or directly on the HTML element.

```
.background, #background, body{  
background:#FFD2FA }
```

If only the background color should be changed can be used:

```
.background{ background-color:#FFD2FA }
```

This example shows the color as background, it is applied via the CSS property "background".

To optimize and compress your CSS code, you can use our [online CSS compressor and optimizer](#) based on csstidy. If you want to create a linear or radial gradient as background or border, check our [CSS Gradient Generator](#).

Hey! You found this booklet interesting? Support Converting Colors with the new Membership Option!

The pro membership hides all ads, plus gives you double the colors in the color bucket, and more awesome pro features!

[Learn more, Memberships starting at \\$2.50/m!](#)

**Follow me
on Twitter!**

@ConvertingColor