

Converting Colors

HunterLab(10.1859, 1.7316,
3.8301)

Have a look what the booklet for
HunterLab(10.1859, 1.7316, 3.8301)
contains.

HunterLab(10.2958, 1.6331, 3.9803)	3
<i>Conversions</i>	4
<i>Details</i>	6
<i>Harmonies</i>	12
<i>Previews</i>	24
<i>Color Blindness Simulation</i>	28
<i>CSS Examples</i>	31

Color

**HunterLab(10.2958, 1.6331,
3.9803)**

Conversions

Conversions Part 1

Format	Color
Hex	24180E
RGB	36, 24, 14
RGB Percent	14%, 9%, 5%
CMY	0.8588, 0.9059, 0.9451
CMYK	0.00, 0.33, 0.61, 0.86
HSL	27°, 44%, 10%
HSV	27°, 61%, 14%
XYZ	1.1334, 1.0600, 0.5603
YIQ	26.4480, 10.3620, -0.5660

Conversions

Conversions Part 2

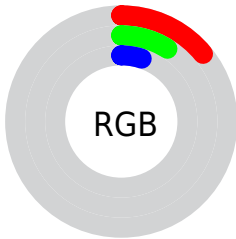
Format	Color
RYB	36, 32, 14
Decimal	2365454
CIELab	9.48, 4.40, 8.33
CIELCh	9, 9.422, 62.187
Yxy	1.0601, 0.4116, 0.3849
Android (android.graphics.Color)	4280555534 (0xFF24180E)
YUV	26.4480, -6.1369, 8.3771
Hunter-Lab	10.2958, 1.6331, 3.9803

Details

The HunterLab color **10.2958, 1.6331, 3.9803** is a dark color, and the websafe version is hex **000000**. A complement of this color would be **9.7953, -1.3076, -4.0896**, and the grayscale version is **10.3163, -0.5505, 0.5605**.

A 20% lighter version of the original color is **24.6151, 1.4414, 5.8692**, and 0.0000, NaN, NaN is the 20% darker color. If you saturate the color by 10%, you get **9.8647, 2.1375, 4.3207**, and if you desaturate by 10%, it is **10.7455, 1.1641, 3.5779**.

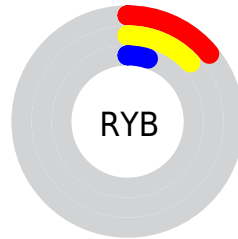
Distribution



Red (14%)

Green (9%)

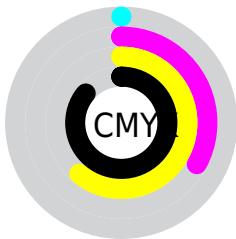
Blue (5%)



Red (14%)

Yellow (13%)

Blue (5%)

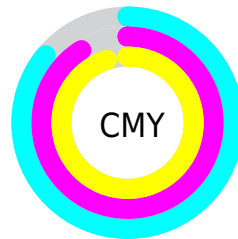


Cyan (0%)

Magenta (33%)

Yellow (61%)

Black (86%)



Cyan (86%)

Magenta (91%)

Yellow (95%)

Brightness & Saturation Gradients

These gradients show how the HunterLab color 10.2958, 1.6331, 3.9803 changes by changing the brightness by 10 percent. The first figure shows a shift by +10% for each color and the second figure -10%.

Similar to the brightness gradients but the following saturation gradients show a change of the HunterLab color 10.2958, 1.6331, 3.9803 by changing the saturation by 10% instead.

■ 10.2958, 1.6331,
3.9803

■ 10.2958, 1.6331,
3.9803

■ 99.3313, -0.8007,
13.1266

0.0000, INF, NaN

0.0000, NaN, NaN

■ 24.5514, 1.5542,
5.8716

0.0000, NaN, NaN

■ 33.0784, 1.3855,
6.9096

0.0000, NaN, NaN

■ 42.4130, 1.1497,
7.9354

0.0000, NaN, NaN

0.0000, NaN, NaN

■ 52.4905, 0.8554,
8.9591

0.0000, NaN, NaN

■ 63.2597, 0.5089,
9.9867

0.0000, NaN, NaN

0.0000, NaN, NaN

■ 74.6788, 0.1150,

11.0222

■ 86.7126, -0.3225,
12.0682

■ 10.2958, 1.6331,
3.9803

■ 10.2958, 1.6331,
3.9803

■ 9.8647, 2.1375,
4.3207

■ 10.7455, 1.1641,
3.5779

■ 9.4494, 2.6612,
4.6440

■ 11.2118, 0.7310,
3.1180

■ 9.0459, 3.1758,
5.0273

■ 11.6938, 0.3321,
2.6055

■ 8.6980, 3.6236,
5.4231

■ 12.1904, -0.0342,
2.0449

■ 12.7006, -0.3698,
1.4403

■ 13.2235, -0.6764,
0.7955

■ 13.7582, -0.9559,
0.1141

■ 14.3040, -1.2102,
-0.6010

■ 14.8602, -1.4410,
-1.3470

Harmonies

Analogous

The Analogous color harmony consists of three colors that are next to each other on the color wheel.



10.2960, 3.5375, 2.6460



10.2958, 1.6331, 3.9803



10.2960, -0.7209, 4.4159

Triad

The Triadic color harmony groups three colors that are evenly spaced from another and form a triangle on the color wheel.



10.2960, 1.6326, 3.9804



10.2960, -4.7051, 0.3959



10.2960, 1.9559, -3.7553

Complementary

The Complementary color scheme is a pair of colors which are on the opposite of each other on the color wheel.



10.2958, 1.6331, 3.9803



9.7953, -1.3076, -4.0896

Split Complementary

Split-complementary colors differ from the complementary color scheme. The scheme consists of three colors, the original color and two neighbors of the complement color.



10.2960, -0.3778, -4.6940



10.2958, 1.6331, 3.9803



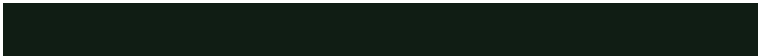
10.2960, -4.0951, -1.9877

Square

The Square scheme is like the rectangle color scheme, but the four colors are evenly spaced on the color wheel.



10.2960, 1.6326, 3.9804



10.2960, -4.2473, 2.3952



10.2960, -2.5646, -3.9848



10.2960, 3.7355, -1.6412

Rectangle

The Rectangle color scheme consists of four colors that form a rectangle on the color wheel.



10.2958, 1.6331, 3.9803



10.2960, -2.1932, 4.1378



10.2960, -2.5646, -3.9848



10.2960, 1.2033, -4.2377

Sweetspot

The Sweet Spot groups the original color and five complimentary colors.



10.2960, 1.6326, 3.9804



15.2623, -0.1268, 2.3972



8.7417, 6.5948, -1.1661



8.5568, -0.0754, 1.3354



55.4075, -2.9564, 3.0104



9.2414, -0.4931, 0.5021

Same Dimension

The Same Dimension uses a secret algorithm to generate beautiful new colors.



10.2960, 1.6326, 3.9804



11.9116, 3.0925, 5.5993



12.6608, -2.3490, 5.8147



7.4956, -0.2765, 0.7162



17.6210, 10.7924, 11.0469



46.6522, 34.7512, 29.3553

Inverse Universe

The Inverse Universe completely reimagines the original color for something new.



9.7953, -1.3076, -4.0896



11.1365, -1.3815, -6.8681



7.5182, 2.7931, -8.4810



7.4566, -0.5100, 0.0865



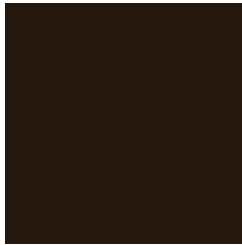
15.6281, 0.3764, -20.3463



40.8082, 5.3224, -62.4962

Previews

White Background



This preview shows how the HunterLab color 10.2958, 1.6331, 3.9803 looks on a white background.

Color Contrast Check

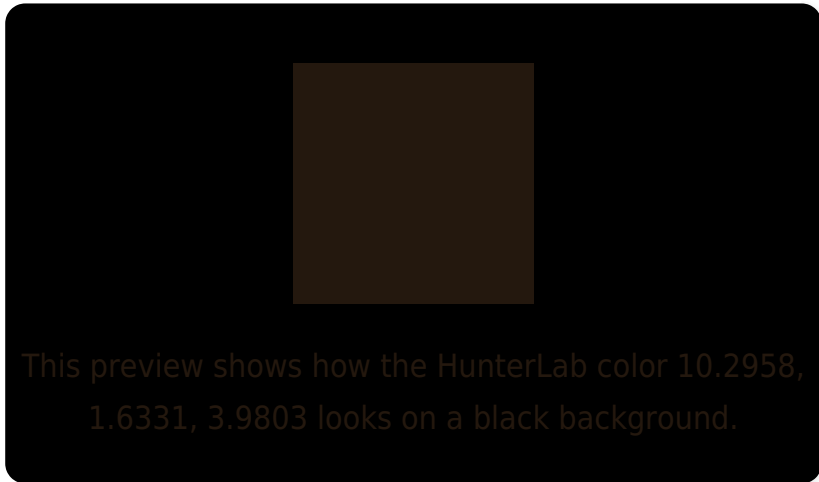
Large Text (above 18pt) WCAG AA ✓ Pass

Any Text WCAG AA ✓ Pass

Large Text (above 18pt) WCAG AAA ✓ Pass

Any Text WCAG AAA ✓ Pass

Black Background



Color Contrast Check

Large Text (above 18pt) WCAG AA × Fail

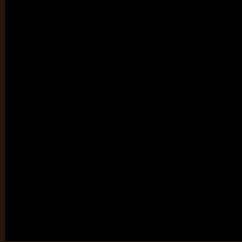
Any Text WCAG AA × Fail

Large Text (above 18pt) WCAG AAA × Fail

Any Text WCAG AAA × Fail

If you want to check with other color combinations, try the [Color Contrast Checker](#).

HunterLab 10.2958, 1.6331, 3.9803 Background



This preview shows how black text looks on a background with the HunterLab color 10.2958, 1.6331, 3.9803.



This preview shows how white text looks on a background with the HunterLab color 10.2958, 1.6331,

Color Blindness Simulation

Color vision deficiency is a very complex topic, and I could not describe the different causes any better than Wikipedia does, so if you want to learn more, you should check out their [article about color blindness](#).

Dichromacy



Original Color

10.2958, 1.6331, 3.9803

Protanopia

10.3902, -1.2635, 3.8014

Deuteranopia

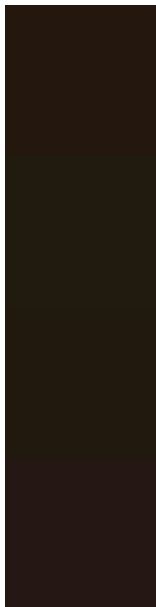
10.2484, 0.4248, 3.9189



Tritanopia

10.3540, 3.1580, 1.4870

Trichromacy



Original Color

10.2958, 1.6331, 3.9803

Protanomaly

10.3940, -0.1355, 3.8244

Deuteranomaly

10.3298, 0.6991, 3.9928

Tritanomaly

10.2792, 2.7735, 2.5652

Monochromacy



Original Color

10.2958, 1.6331, 3.9803

Achromatopsia

10.1636, -0.5423, 0.5522

Achromatomaly

10.1450, 0.3315, 1.8210

CSS Examples

Text

The CSS property to change the color of the text to HunterLab 10.2958, 1.6331, 3.9803 is called "color". The color property can be set on classes, ids or directly on the HTML element.

This example shows how text in the color `rgb(36, 24, 14)` looks like.

```
.text, #text, p{  
    color:rgb(36, 24, 14)  
}
```

If you want to add a text shadow in that color use the text-shadow property, you can generate a text shadow directly with our [CSS Text Shadow Generator](#).

Here you see how black text with a 4 pixel rgb(36, 24, 14) colored shadow looks like.

```
.shadow{ text-shadow: 4px 4px 2px rgb(36, 24, 14) }
```

Border

The CSS property to change the border of an element to HunterLab 10.2958, 1.6331, 3.9803 is called "border".

The border property can be set on classes, ids or directly on the HTML element.

This example shows the color as border, it can be applied via the CSS property "border" or "border-color".

```
.border, #border, table{ border:4px solid rgb(36, 24, 14) }
```


If only the border color should be changed use the property `border-color`.

```
.border{ border-color:rgb(36, 24, 14) }
```

If you want to add a box shadow in that color use:

Here you see how a box with a 4 pixel `rgb(36, 24, 14)` colored shadow looks like.

```
.boxshadow{ -moz-box-shadow:4px 4px 4px  
4px rgb(36, 24, 14); -webkit-box-  
shadow:4px 4px 4px 4px rgb(36, 24, 14);  
box-shadow:4px 4px 4px 4px rgb(36, 24, 14)  
}
```

Background

The CSS property to change the background color of an element to HunterLab 10.2958, 1.6331, 3.9803 is called "background". The background property can be set on classes, ids or directly on the HTML element.

```
.background, #background, body{  
background: rgb(36, 24, 14) }
```

If only the background color should be changed can be used:

```
.background{ background-color: rgb(36, 24,  
14) }
```

This example shows the color as background, it is applied via the CSS property "background".

To optimize and compress your CSS code, you can use our [online CSS compressor and optimizer](#) based on csstidy. If you want to create a linear or radial gradient as background or border, check our [CSS Gradient Generator](#).

Hey! You found this booklet interesting? Support Converting Colors with the new Membership Option!

The pro membership hides all ads, plus gives you double the colors in the color bucket, and more awesome pro features!

[Learn more, Memberships starting at \\$2.50/m!](#)

**Follow me
on Twitter!**

@ConvertingColor