

Converting Colors

HunterLab(10.5886, 6.9438,
0.7960)

Have a look what the booklet for
HunterLab(10.5886, 6.9438, 0.7960)
contains.

HunterLab(10.6646, 6.9485, 0.9284)	3
<i>Conversions</i>	4
<i>Details</i>	6
<i>Harmonies</i>	12
<i>Previews</i>	24
<i>Color Blindness Simulation</i>	28
<i>CSS Examples</i>	31

Color

**HunterLab(10.6646, 6.9485,
0.9284)**

Conversions

Conversions Part 1

Format	Color
Hex	2D141B
RGB	45, 20, 27
RGB Percent	18%, 8%, 11%
CMY	0.8235, 0.9216, 0.8941
CMYK	0.00, 0.56, 0.40, 0.82
HSL	343°, 38%, 13%
HSV	343°, 56%, 18%
XYZ	1.5302, 1.1373, 1.1758
YIQ	28.2730, 12.6530, 7.4770

Conversions

Conversions Part 2

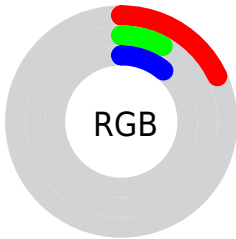
Format	Color
RYB	45, 20, 27
Decimal	2954267
CIELab	10.09, 13.81, 0.77
CIELCh	10, 13.829, 3.197
Yxy	1.1374, 0.3981, 0.2959
Android (android.graphics.Color)	4281144347 (0xFF2D141B)
YUV	28.2730, -0.6276, 14.6696
Hunter-Lab	10.6646, 6.9485, 0.9284

Details

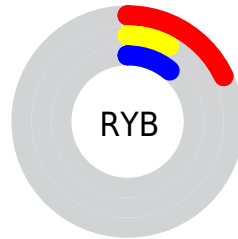
The HunterLab color **10.6646, 6.9485, 0.9284** is a dark color, and the websafe version is hex **330000**. A complement of this color would be **14.7155, -6.6257, 1.5629**, and the grayscale version is **10.8595, -0.5794, 0.5900**.

A 20% lighter version of the original color is **25.0450, 8.1756, 1.8585**, and 0.0000, NaN, NaN is the 20% darker color. If you saturate the color by 10%, you get **9.8936, 8.3522, 1.1420**, and if you desaturate by 10%, it is **11.5196, 5.5118, 0.7897**.

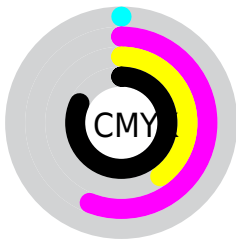
Distribution



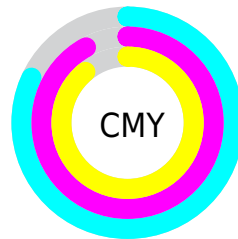
- Red (18%)
- Green (8%)
- Blue (11%)



- Red (18%)
- Yellow (8%)
- Blue (11%)



- Cyan (0%)
- Magenta (56%)
- Yellow (40%)
- Black (82%)



- Cyan (82%)
- Magenta (92%)
- Yellow (89%)

Brightness & Saturation Gradients

These gradients show how the HunterLab color 10.6646, 6.9485, 0.9284 changes by changing the brightness by 10 percent. The first figure shows a shift by +10% for each color and the second figure -10%.

Similar to the brightness gradients but the following saturation gradients show a change of the HunterLab color 10.6646, 6.9485, 0.9284 by changing the saturation by 10% instead.

■ 10.6646, 6.9485,
0.9284

■ 10.6646, 6.9485,
0.9284

■ 100.1128, 9.1054,
6.1936

■ 0.9828, 61.1690,
0.6879

■ 25.0429, 8.1521,
1.8293

0.0000, NaN, NaN

0.0000, NaN, NaN

■ 33.6209, 8.5467,
2.3452

0.0000, NaN, NaN

■ 43.0021, 8.8349,
2.9006

0.0000, NaN, NaN

■ 53.1228, 9.0322,
3.4929

0.0000, NaN, NaN

0.0000, NaN, NaN

■ 63.9324, 9.1500,
4.1200

0.0000, NaN, NaN

■ 75.3896, 9.1971,

0.0000, NaN, NaN

4.7802

■ 87.4597, 9.1803,
5.4718

■ 10.6646, 6.9485,
0.9284

■ 10.6646, 6.9485,
0.9284

■ 9.8936, 8.3522,
1.1420

■ 11.5196, 5.5118,
0.7897

■ 9.2177, 9.6794,
1.4346

■ 12.4468, 4.0736,
0.7177

■ 8.6045, 11.0005,
1.7610

■ 13.4368, 2.6510,
0.7041

■ 7.9571, 12.6232,
2.0179

■ 14.4816, 1.2531,
0.7407

■ 7.6546, 13.4749,
2.1074

■ 15.5741, -0.1165,
0.8200

■ 16.7087, -1.4572,
0.9357

■ 17.8806, -2.7707,
1.0825

■ 19.0859, -4.0594,
1.2558

■ 20.3213, -5.3259,
1.4520

Harmonies

Analogous

The Analogous color harmony consists of three colors that are next to each other on the color wheel.



10.6649, 6.0671, -2.6985



10.6646, 6.9485, 0.9284



10.6649, 5.6114, 3.6486

Triad

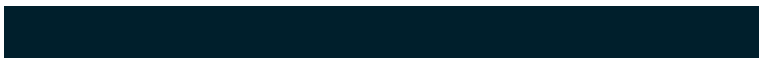
The Triadic color harmony groups three colors that are evenly spaced from another and form a triangle on the color wheel.



10.6649, 6.9479, 0.9286



10.6649, -3.9842, 5.2035



10.6649, -3.4161, -6.7857

Complementary

The Complementary color scheme is a pair of colors which are on the opposite of each other on the color wheel.



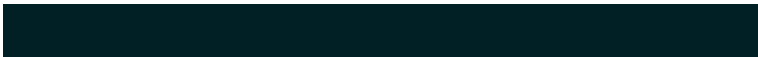
10.6646, 6.9485, 0.9284



14.7155, -6.6257, 1.5629

Split Complementary

Split-complementary colors differ from the complementary color scheme. The scheme consists of three colors, the original color and two neighbors of the complement color.



10.6649, -5.6267, -3.5147



10.6646, 6.9485, 0.9284



10.6649, -5.9418, 3.1294

Square

The Square scheme is like the rectangle color scheme, but the four colors are evenly spaced on the color wheel.



10.6649, 6.9479, 0.9286



10.6649, -0.9394, 6.0724



10.6649, -6.5401, 0.2203



10.6649, -0.1948, -7.9060

Rectangle

The Rectangle color scheme consists of four colors that form a rectangle on the color wheel.



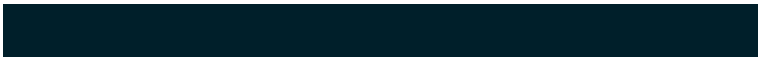
10.6646, 6.9485, 0.9284



10.6649, 3.7316, 5.0095



10.6649, -6.5401, 0.2203



10.6649, -4.2815, -5.8590

Sweetspot

The Sweet Spot groups the original color and five complimentary colors.



10.6649, 6.9479, 0.9286



18.2545, 2.0435, 0.9339



10.4897, 7.5106, -7.4373



10.1677, 1.1375, 0.5201



58.5142, -3.1222, 3.1792



11.5809, -0.6179, 0.6292

Same Dimension

The Same Dimension uses a secret algorithm to generate beautiful new colors.



10.6649, 6.9479, 0.9286



12.2170, 11.6522, 1.6548



11.4964, 4.1821, 3.7437



8.7210, 0.1343, 0.4540



14.4184, 25.1573, 5.7101



38.2781, 66.4039, 18.1347

Inverse Universe

The Inverse Universe completely reimagines the original color for something new.



10.6649, 6.9479, 0.9286



12.2170, 11.6522, 1.6548



13.5199, -3.7630, -2.6223



8.7210, 0.1343, 0.4540



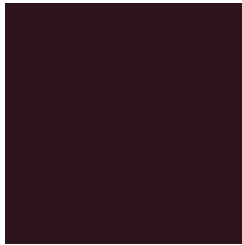
14.4184, 25.1573, 5.7101



38.2781, 66.4039, 18.1347

Previews

White Background



This preview shows how the HunterLab color 10.6646, 6.9485, 0.9284 looks on a white background.

Color Contrast Check

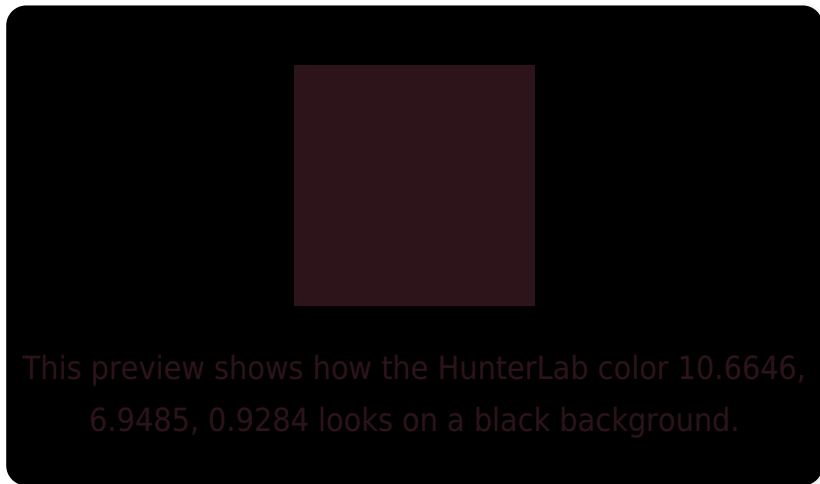
Large Text (above 18pt) WCAG AA ✓ Pass

Any Text WCAG AA ✓ Pass

Large Text (above 18pt) WCAG AAA ✓ Pass

Any Text WCAG AAA ✓ Pass

Black Background



Color Contrast Check

Large Text (above 18pt) WCAG AA × Fail

Any Text WCAG AA × Fail

Large Text (above 18pt) WCAG AAA × Fail

Any Text WCAG AAA × Fail

If you want to check with other color combinations, try the [Color Contrast Checker](#).

HunterLab 10.6646, 6.9485, 0.9284 Background



This preview shows how black text looks on a background with the HunterLab color 10.6646, 6.9485, 0.9284.



This preview shows how white text looks on a background with the HunterLab color 10.6646, 6.9485,

0.9284.

Color Blindness Simulation

Color vision deficiency is a very complex topic, and I could not describe the different causes any better than Wikipedia does, so if you want to learn more, you should check out their [article about color blindness](#).

Dichromacy



Original Color

10.6646, 6.9485, 0.9284

Protanopia

10.8705, -0.0598, -0.7559

Deuteranopia

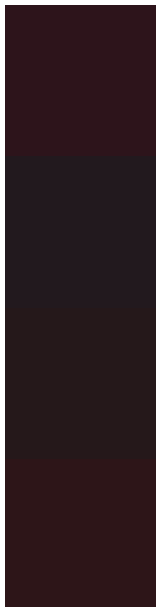
10.7959, 0.5188, 1.2944



Tritanopia

10.7338, 6.0801, 2.5278

Trichromacy



Original Color

10.6646, 6.9485, 0.9284

Protanomaly

10.6258, 2.2631, -0.2665

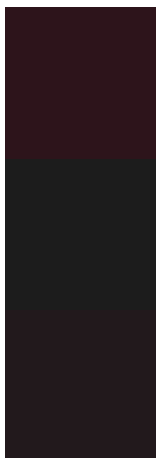
Deuteranomaly

10.5885, 2.9814, 1.1045

Tritanomaly

10.7711, 6.2610, 1.9899

Monochromacy



Original Color

10.6646, 6.9485, 0.9284

Achromatopsia

10.7760, -0.5750, 0.5855

Achromatomaly

10.5791, 2.0193, 0.3971

CSS Examples

Text

The CSS property to change the color of the text to HunterLab 10.6646, 6.9485, 0.9284 is called "color". The color property can be set on classes, ids or directly on the HTML element.

This example shows how text in the color `rgb(45, 20, 27)` looks like.

```
.text, #text, p{  
    color:rgb(45, 20, 27)  
}
```

If you want to add a text shadow in that color use the text-shadow property, you can generate a text shadow directly with our [CSS Text Shadow Generator](#).

Here you see how black text with a 4 pixel rgb(45, 20, 27) colored shadow looks like.

```
.shadow{ text-shadow: 4px 4px 2px rgb(45, 20, 27) }
```

Border

The CSS property to change the border of an element to HunterLab 10.6646, 6.9485, 0.9284 is called "border". The border property can be set on classes, ids or directly on the HTML element.

This example shows the color as border, it can be applied via the CSS property "border" or "border-color".

```
.border, #border, table{ border:4px solid rgb(45, 20, 27) }
```


If only the border color should be changed use the property `border-color`.

```
.border{ border-color:rgb(45, 20, 27) }
```

If you want to add a box shadow in that color use:

Here you see how a box with a 4 pixel `rgb(45, 20, 27)` colored shadow looks like.

```
.boxshadow{ -moz-box-shadow:4px 4px 4px  
4px rgb(45, 20, 27); -webkit-box-  
shadow:4px 4px 4px 4px rgb(45, 20, 27);  
box-shadow:4px 4px 4px 4px rgb(45, 20, 27)  
}
```

Background

The CSS property to change the background color of an element to HunterLab 10.6646, 6.9485, 0.9284 is called "background". The background property can be set on classes, ids or directly on the HTML element.

```
.background, #background, body{  
background: rgb(45, 20, 27) }
```

If only the background color should be changed can be used:

```
.background{ background-color: rgb(45, 20,  
27) }
```

This example shows the color as background, it is applied via the CSS property "background".

To optimize and compress your CSS code, you can use our [online CSS compressor and optimizer](#) based on csstidy. If you want to create a linear or radial gradient as background or border, check our [CSS Gradient Generator](#).

Hey! You found this booklet interesting? Support Converting Colors with the new Membership Option!

The pro membership hides all ads, plus gives you double the colors in the color bucket, and more awesome pro features!

[Learn more, Memberships starting at \\$2.50/m!](#)

**Follow me
on Twitter!**

@ConvertingColor