

Converting Colors

HunterLab(10.6114, 1.8648,
3.9812)

Have a look what the booklet for
HunterLab(10.6114, 1.8648, 3.9812)
contains.

HunterLab(10.6856, 1.9002, 4.1101)	3
<i>Conversions</i>	4
<i>Details</i>	6
<i>Harmonies</i>	12
<i>Previews</i>	24
<i>Color Blindness Simulation</i>	28
<i>CSS Examples</i>	31

Color

**HunterLab(10.6856, 1.9002,
4.1101)**

Conversions

Conversions Part 1

Format	Color
Hex	26190F
RGB	38, 25, 15
RGB Percent	15%, 10%, 6%
CMY	0.8510, 0.9020, 0.9412
CMYK	0.00, 0.34, 0.61, 0.85
HSL	26°, 43%, 10%
HSV	26°, 61%, 15%
XYZ	1.2332, 1.1418, 0.6073
YIQ	27.7470, 10.9580, -0.3540

Conversions

Conversions Part 2

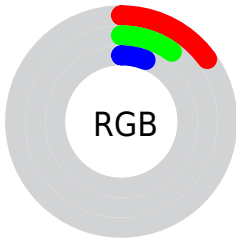
Format	Color
R_{YB}	38, 33, 15
Decimal	2496783
CIE _{Lab}	10.12, 4.90, 8.76
CIE _{LCh}	10, 10.040, 60.799
Yxy	1.1419, 0.4135, 0.3829
Android (android.graphics.Color)	4280686863 (0xFF26190F)
YUV	27.7470, -6.2843, 8.9919
Hunter-Lab	10.6856, 1.9002, 4.1101

Details

The HunterLab color **10.6856, 1.9002, 4.1101** is a dark color, and the websafe version is hex **000000**. A complement of this color would be **10.3535, -1.5319, -4.1479**, and the grayscale version is **10.7147, -0.5717, 0.5822**.

A 20% lighter version of the original color is **25.1487, 2.0332, 6.0947**, and 0.0000, NaN, NaN is the 20% darker color. If you saturate the color by 10%, you get **10.2161, 2.4666, 4.4654**, and if you desaturate by 10%, it is **11.1764, 1.3720, 3.6898**.

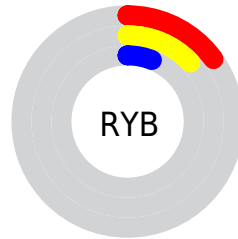
Distribution



Red (15%)

Green (10%)

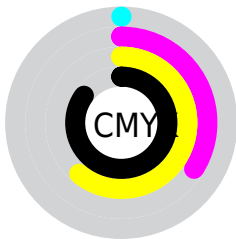
Blue (6%)



Red (15%)

Yellow (13%)

Blue (6%)

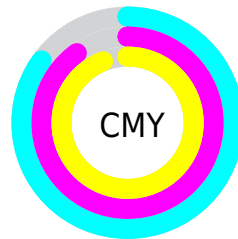


Cyan (0%)

Magenta (34%)

Yellow (61%)

Black (85%)



Cyan (85%)

Magenta (90%)

Yellow (94%)

Brightness & Saturation Gradients

These gradients show how the HunterLab color 10.6856, 1.9002, 4.1101 changes by changing the brightness by 10 percent. The first figure shows a shift by +10% for each color and the second figure -10%.

Similar to the brightness gradients but the following saturation gradients show a change of the HunterLab color 10.6856, 1.9002, 4.1101 by changing the saturation by 10% instead.

■ 10.6856, 1.9002,
4.1101

■ 10.6856, 1.9002,
4.1101

■ 100.1571, -0.3119,
13.5763

■ 1.1596, 18.3433,
0.8117

■ 25.0708, 1.8830,
6.1477

0.0000, NaN, NaN

0.0000, NaN, NaN

■ 33.6517, 1.7414,
7.2160

0.0000, NaN, NaN

■ 43.0355, 1.5309,
8.2697

0.0000, NaN, NaN

■ 53.1586, 1.2604,
9.3192

0.0000, NaN, NaN

0.0000, NaN, NaN

■ 63.9706, 0.9363,
10.3711

0.0000, NaN, NaN

■ 75.4299, 0.5638,

0.0000, NaN, NaN

11.4295

■ 87.5020, 0.1466,
12.4973

■ 10.6856, 1.9002,
4.1101

■ 10.6856, 1.9002,
4.1101

■ 10.2161, 2.4666,
4.4654

■ 11.1764, 1.3720,
3.6898

■ 9.7667, 3.0612,
4.7817

■ 11.6862, 0.8825,
3.2096

■ 9.3322, 3.6476,
5.1575

■ 12.2139, 0.4299,
2.6750

■ 8.9351, 4.1907,
5.5791

■ 12.7581, 0.0125,
2.0910

■ 13.3177, -0.3718,
1.4622

■ 13.8915, -0.7251,
0.7927

■ 14.4786, -1.0494,
0.0861

■ 15.0782, -1.3468,
-0.6542

■ 15.6894, -1.6193,
-1.4253

Harmonies

Analogous

The Analogous color harmony consists of three colors that are next to each other on the color wheel.



10.6859, 3.9222, 2.7048



10.6856, 1.9002, 4.1101



10.6859, -0.6383, 4.6048

Triad

The Triadic color harmony groups three colors that are evenly spaced from another and form a triangle on the color wheel.



10.6859, 1.8997, 4.1102



10.6859, -5.0035, 0.5171



10.6859, 2.0275, -4.1883

Complementary

The Complementary color scheme is a pair of colors which are on the opposite of each other on the color wheel.



10.6856, 1.9002, 4.1101



10.3535, -1.5319, -4.1479

Split Complementary

Split-complementary colors differ from the complementary color scheme. The scheme consists of three colors, the original color and two neighbors of the complement color.



10.6859, -0.5031, -5.1358



10.6856, 1.9002, 4.1101



10.6859, -4.4255, -2.0603

Square

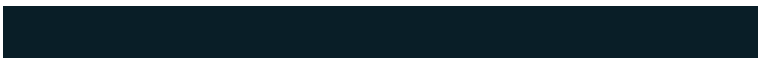
The Square scheme is like the rectangle color scheme, but the four colors are evenly spaced on the color wheel.



10.6859, 1.8997, 4.1102



10.6859, -4.4831, 2.6108



10.6859, -2.8353, -4.2798



10.6859, 4.0006, -1.9227

Rectangle

The Rectangle color scheme consists of four colors that form a rectangle on the color wheel.



10.6856, 1.9002, 4.1101



10.6859, -2.2388, 4.3514



10.6859, -2.8353, -4.2798



10.6859, 1.2064, -4.6922

Sweetspot

The Sweet Spot groups the original color and five complimentary colors.



10.6859, 1.8997, 4.1102



15.9895, -0.0546, 2.4971



9.1527, 6.9986, -1.3678



9.2179, -0.0224, 1.4557



56.4399, -3.0115, 3.0665



10.0114, -0.5342, 0.5439

Same Dimension

The Same Dimension uses a secret algorithm to generate beautiful new colors.



10.6859, 1.8997, 4.1102



12.3336, 3.5942, 5.8191



13.1786, -2.3303, 6.0465



7.4883, -0.2644, 0.7081



17.3396, 11.4542, 10.8851



45.8683, 36.7009, 28.9064

Inverse Universe

The Inverse Universe completely reimagines the original color for something new.



10.3535, -1.5319, -4.1479



11.8108, -1.6891, -7.0348



7.9252, 2.8014, -8.7860



7.4640, -0.5221, 0.0952



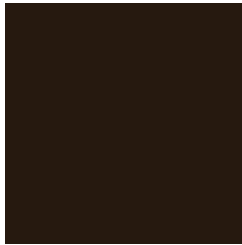
16.0197, -0.2963, -19.3837



41.9605, 3.2272, -59.4135

Previews

White Background



This preview shows how the HunterLab color 10.6856, 1.9002, 4.1101 looks on a white background.

Color Contrast Check

Large Text (above 18pt) WCAG AA ✓ Pass

Any Text WCAG AA ✓ Pass

Large Text (above 18pt) WCAG AAA ✓ Pass

Any Text WCAG AAA ✓ Pass

Black Background



Color Contrast Check

Large Text (above 18pt) WCAG AA × Fail

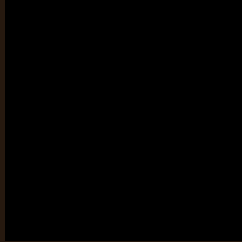
Any Text WCAG AA × Fail

Large Text (above 18pt) WCAG AAA × Fail

Any Text WCAG AAA × Fail

If you want to check with other color combinations, try the [Color Contrast Checker](#).

HunterLab 10.6856, 1.9002, 4.1101 Background



This preview shows how black text looks on a background with the HunterLab color 10.6856, 1.9002, 4.1101.



This preview shows how white text looks on a background with the HunterLab color 10.6856, 1.9002,

Color Blindness Simulation

Color vision deficiency is a very complex topic, and I could not describe the different causes any better than Wikipedia does, so if you want to learn more, you should check out their [article about color blindness](#).

Dichromacy



Original Color

10.6856, 1.9002, 4.1101

Protanopia

10.7667, -1.0385, 3.9167

Deuteranopia

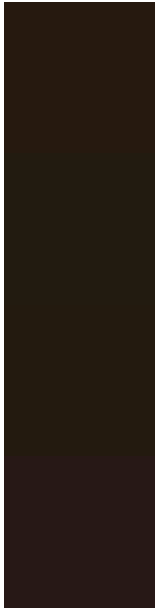
10.7631, 0.0352, 4.1432



Tritanopia

10.7665, 3.5369, 1.3144

Trichromacy



Original Color

10.6856, 1.9002, 4.1101

Protanomaly

10.7766, 0.1087, 3.9454

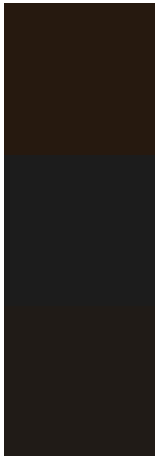
Deuteranomaly

10.6330, 0.6769, 4.0438

Tritanomaly

10.6889, 3.1399, 2.4311

Monochromacy



Original Color

10.6856, 1.9002, 4.1101

Achromatopsia

10.7760, -0.5750, 0.5855

Achromatomaly

10.7369, 0.2004, 2.1432

CSS Examples

Text

The CSS property to change the color of the text to HunterLab 10.6856, 1.9002, 4.1101 is called "color". The color property can be set on classes, ids or directly on the HTML element.

This example shows how text in the color `rgb(38, 25, 15)` looks like.

```
.text, #text, p{  
    color:rgb(38, 25, 15)  
}
```

If you want to add a text shadow in that color use the text-shadow property, you can generate a text shadow directly with our [CSS Text Shadow Generator](#).

Here you see how black text with a 4 pixel rgb(38, 25, 15) colored shadow looks like.

```
.shadow{ text-shadow: 4px 4px 2px rgb(38, 25, 15) }
```

Border

The CSS property to change the border of an element to HunterLab 10.6856, 1.9002, 4.1101 is called "border". The border property can be set on classes, ids or directly on the HTML element.

This example shows the color as border, it can be applied via the CSS property "border" or "border-color".

```
.border, #border, table{ border:4px solid rgb(38, 25, 15) }
```


If only the border color should be changed use the property `border-color`.

```
.border{ border-color:rgb(38, 25, 15) }
```

If you want to add a box shadow in that color use:

Here you see how a box with a 4 pixel `rgb(38, 25, 15)` colored shadow looks like.

```
.boxshadow{ -moz-box-shadow:4px 4px 4px  
4px rgb(38, 25, 15); -webkit-box-  
shadow:4px 4px 4px 4px rgb(38, 25, 15);  
box-shadow:4px 4px 4px 4px rgb(38, 25, 15)  
}
```

Background

The CSS property to change the background color of an element to HunterLab 10.6856, 1.9002, 4.1101 is called "background". The background property can be set on classes, ids or directly on the HTML element.

```
.background, #background, body{  
background: rgb(38, 25, 15) }
```

If only the background color should be changed can be used:

```
.background{ background-color: rgb(38, 25,  
15) }
```

This example shows the color as background, it is applied via the CSS property "background".

To optimize and compress your CSS code, you can use our [online CSS compressor and optimizer](#) based on csstidy. If you want to create a linear or radial gradient as background or border, check our [CSS Gradient Generator](#).

Hey! You found this booklet interesting? Support Converting Colors with the new Membership Option!

The pro membership hides all ads, plus gives you double the colors in the color bucket, and more awesome pro features!

[Learn more, Memberships starting at \\$2.50/m!](#)

**Follow me
on Twitter!**

@ConvertingColor