

Converting Colors

HunterLab(10.6114, 6.4961,
-0.2929)

Have a look what the booklet for
HunterLab(10.6114, 6.4961, -0.2929)
contains.

HunterLab(10.6942, 6.3015, -0.1098)	3
<i>Conversions</i>	4
<i>Details</i>	6
<i>Harmonies</i>	12
<i>Previews</i>	24
<i>Color Blindness Simulation</i>	28
<i>CSS Examples</i>	31

Color

**HunterLab(10.6942, 6.3015,
-0.1098)**

Conversions

Conversions Part 1

Format	Color
Hex	2B151E
RGB	43, 21, 30
RGB Percent	17%, 8%, 12%
CMY	0.8314, 0.9176, 0.8824
CMYK	0.00, 0.51, 0.30, 0.83
HSL	335°, 34%, 13%
HSV	335°, 51%, 17%
XYZ	1.4988, 1.1437, 1.3701
YIQ	28.6040, 10.2230, 7.4630

Conversions

Conversions Part 2

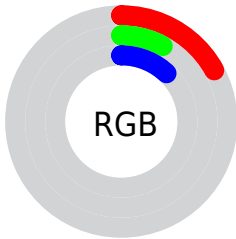
Format	Color
RYB	43, 21, 30
Decimal	2823454
CIELab	10.14, 12.73, -1.46
CIELCh	10, 12.813, 353.470
Yxy	1.1437, 0.3735, 0.2850
Android (android.graphics.Color)	4281013534 (0xFF2B151E)
YUV	28.6040, 0.6882, 12.6253
Hunter-Lab	10.6942, 6.3015, -0.1098

Details

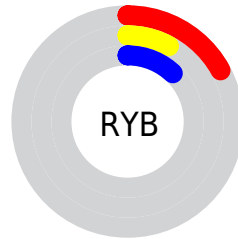
The HunterLab color **10.6942, 6.3015, -0.1098** is a dark color, and the websafe version is hex **000000**. A complement of this color would be **14.1517, -6.3257, 2.2686**, and the grayscale version is **10.9581, -0.5847, 0.5954**.

A 20% lighter version of the original color is **25.0700, 7.3154, 0.2544**, and 0.0000, NaN, NaN is the 20% darker color. If you saturate the color by 10%, you get **9.9326, 7.6930, -0.1020**, and if you desaturate by 10%, it is **11.5285, 4.8850, -0.0384**.

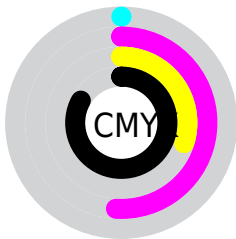
Distribution



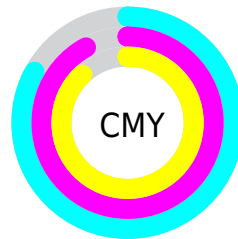
- Red (17%)
- Green (8%)
- Blue (12%)



- Red (17%)
- Yellow (8%)
- Blue (12%)



- Cyan (0%)
- Magenta (51%)
- Yellow (30%)
- Black (83%)



- Cyan (83%)
- Magenta (92%)
- Yellow (88%)

Brightness & Saturation Gradients

These gradients show how the HunterLab color 10.6942, 6.3015, -0.1098 changes by changing the brightness by 10 percent. The first figure shows a shift by +10% for each color and the second figure -10%.

Similar to the brightness gradients but the following saturation gradients show a change of the HunterLab color 10.6942, 6.3015, -0.1098 by changing the saturation by 10% instead.

■ 10.6942, 6.3015,
-0.1098

■ 10.6942, 6.3015,
-0.1098

■ 100.1752, 7.9482,
4.0306

■ 1.2247, 45.2287,
-4.8656

■ 25.0822, 7.3669,
0.4590

0.0000, NaN, NaN

0.0000, NaN, NaN

■ 33.6643, 7.6991,
0.8360

0.0000, NaN, NaN

■ 43.0492, 7.9288,
1.2641

0.0000, NaN, NaN

■ 53.1733, 8.0708,
1.7384

0.0000, NaN, NaN

0.0000, NaN, NaN

■ 63.9862, 8.1362,
2.2550

0.0000, NaN, NaN

■ 75.4464, 8.1334,

0.0000, NaN, NaN

2.8108

■ 87.5193, 8.0689,
3.4034

■ 10.6942, 6.3015,
-0.1098

■ 10.6942, 6.3015,
-0.1098

■ 9.9326, 7.6930,
-0.1020

■ 11.5285, 4.8850,
-0.0384

■ 9.2532, 9.0245,
-0.0037

■ 12.4255, 3.4686,
0.0992

■ 8.6536, 10.2828,
0.1801

■ 13.3774, 2.0659,
0.2925

■ 8.0377, 11.7472,
0.3327

■ 14.3773, 0.6842,
0.5320

■ 7.4561, 13.3366,
0.4160

■ 15.4194, -0.6735,
0.8100

■ 16.4989, -2.0069,
1.1203

■ 17.6118, -3.3173,
1.4578

■ 18.7547, -4.6065,
1.8184

■ 19.9248, -5.8768,
2.1988

Harmonies

Analogous

The Analogous color harmony consists of three colors that are next to each other on the color wheel.



10.6945, 4.8721, -3.5504



10.6942, 6.3015, -0.1098



10.6945, 5.7208, 2.6908

Triad

The Triadic color harmony groups three colors that are evenly spaced from another and form a triangle on the color wheel.



10.6945, 6.3010, -0.1096



10.6945, -2.9269, 5.2683



10.6945, -4.0126, -5.3139

Complementary

The Complementary color scheme is a pair of colors which are on the opposite of each other on the color wheel.



10.6942, 6.3015, -0.1098



14.1517, -6.3257, 2.2686

Split Complementary

Split-complementary colors differ from the complementary color scheme. The scheme consists of three colors, the original color and two neighbors of the complement color.



10.6945, -5.7036, -2.0391



10.6942, 6.3015, -0.1098



10.6945, -5.1098, 3.6691

Square

The Square scheme is like the rectangle color scheme, but the four colors are evenly spaced on the color wheel.



10.6945, 6.3010, -0.1096



10.6945, 0.1421, 5.6470



10.6945, -6.1016, 1.2305



10.6945, -1.2662, -7.0778

Rectangle

The Rectangle color scheme consists of four colors that form a rectangle on the color wheel.



10.6942, 6.3015, -0.1098



10.6945, 4.3030, 4.1295



10.6945, -6.1016, 1.2305



10.6945, -4.7036, -4.3139

Sweetspot

The Sweet Spot groups the original color and five complimentary colors.



10.6945, 6.3010, -0.1096



17.8101, 1.7152, 0.5292



10.2375, 5.7703, -6.8270



9.6483, 0.9292, 0.2867



57.4755, -3.0668, 3.1228



10.7914, -0.5758, 0.5863

Same Dimension

The Same Dimension uses a secret algorithm to generate beautiful new colors.



10.6945, 6.3010, -0.1096



12.4075, 10.4786, -0.1000



10.8351, 4.6752, 2.8757



8.0313, 0.1274, 0.3383



14.1764, 25.1094, 2.7111



38.2444, 67.2759, 10.9048

Inverse Universe

The Inverse Universe completely reimagines the original color for something new.



10.6945, 6.3010, -0.1096



12.4075, 10.4786, -0.1000



13.8971, -4.4875, -1.2660



8.0313, 0.1274, 0.3383



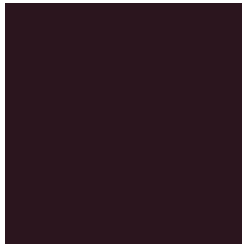
14.1764, 25.1094, 2.7111



38.2444, 67.2759, 10.9048

Previews

White Background



This preview shows how the HunterLab color 10.6942, 6.3015, -0.1098 looks on a white background.

Color Contrast Check

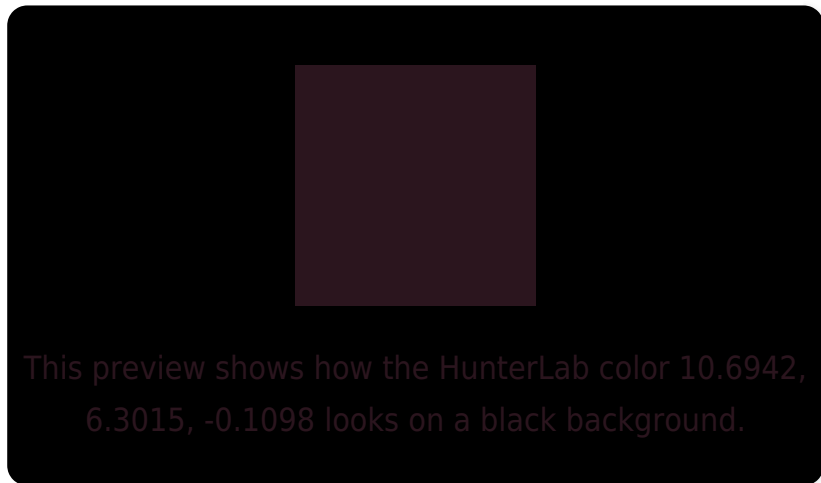
Large Text (above 18pt) WCAG AA ✓ Pass

Any Text WCAG AA ✓ Pass

Large Text (above 18pt) WCAG AAA ✓ Pass

Any Text WCAG AAA ✓ Pass

Black Background



Color Contrast Check

Large Text (above 18pt) WCAG AA × Fail

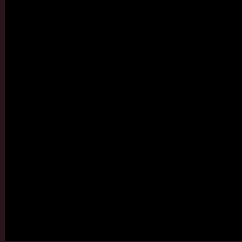
Any Text WCAG AA × Fail

Large Text (above 18pt) WCAG AAA × Fail

Any Text WCAG AAA × Fail

If you want to check with other color combinations, try the [Color Contrast Checker](#).

HunterLab 10.6942, 6.3015, -0.1098 Background



This preview shows how black text looks on a background with the HunterLab color 10.6942, 6.3015, -0.1098.



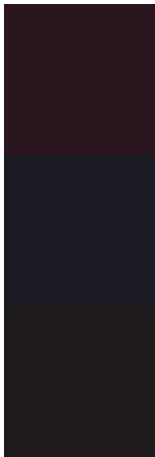
This preview shows how white text looks on a background with the HunterLab color 10.6942, 6.3015, -0.1098.

-0.1098.

Color Blindness Simulation

Color vision deficiency is a very complex topic, and I could not describe the different causes any better than Wikipedia does, so if you want to learn more, you should check out their [article about color blindness](#).

Dichromacy



Original Color

10.6942, 6.3015, -0.1098

Protanopia

10.8852, 0.1473, -1.9511

Deuteranopia

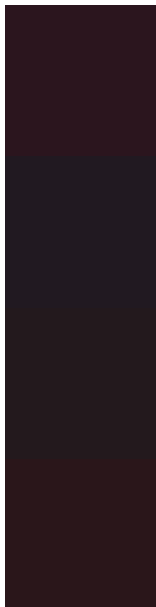
10.7883, 0.6241, 0.2704



Tritanopia

10.6396, 4.9796, 1.8277

Trichromacy



Original Color

10.6942, 6.3015, -0.1098

Protanomaly

10.6226, 2.4041, -1.4432

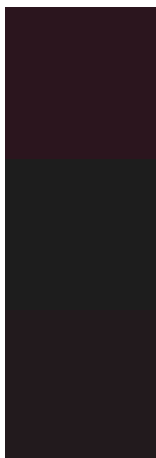
Deuteranomaly

10.6831, 2.3997, 0.1738

Tritanomaly

10.6801, 5.1800, 1.2464

Monochromacy



Original Color

10.6942, 6.3015, -0.1098

Achromatopsia

11.0844, -0.5914, 0.6022

Achromatomaly

10.8055, 1.7538, 0.3109

CSS Examples

Text

The CSS property to change the color of the text to HunterLab 10.6942, 6.3015, -0.1098 is called "color". The color property can be set on classes, ids or directly on the HTML element.

This example shows how text in the color `rgb(43, 21, 30)` looks like.

```
.text, #text, p{  
    color:rgb(43, 21, 30)  
}
```

If you want to add a text shadow in that color use the text-shadow property, you can generate a text shadow directly with our [CSS Text Shadow Generator](#).

Here you see how black text with a 4 pixel rgb(43, 21, 30) colored shadow looks like.

```
.shadow{ text-shadow: 4px 4px 2px rgb(43, 21, 30) }
```

Border

The CSS property to change the border of an element to HunterLab 10.6942, 6.3015, -0.1098 is called "border". The border property can be set on classes, ids or directly on the HTML element.

This example shows the color as border, it can be applied via the CSS property "border" or "border-color".

```
.border, #border, table{ border:4px solid rgb(43, 21, 30) }
```


If only the border color should be changed use the property `border-color`.

```
.border{ border-color:rgb(43, 21, 30) }
```

If you want to add a box shadow in that color use:

Here you see how a box with a 4 pixel `rgb(43, 21, 30)` colored shadow looks like.

```
.boxshadow{ -moz-box-shadow:4px 4px 4px  
4px rgb(43, 21, 30); -webkit-box-  
shadow:4px 4px 4px 4px rgb(43, 21, 30);  
box-shadow:4px 4px 4px 4px rgb(43, 21, 30)  
}
```

Background

The CSS property to change the background color of an element to HunterLab 10.6942, 6.3015, -0.1098 is called "background". The background property can be set on classes, ids or directly on the HTML element.

```
.background, #background, body{  
background: rgb(43, 21, 30) }
```

If only the background color should be changed can be used:

```
.background{ background-color: rgb(43, 21,  
30) }
```

This example shows the color as background, it is applied via the CSS property "background".

To optimize and compress your CSS code, you can use our [online CSS compressor and optimizer](#) based on csstidy. If you want to create a linear or radial gradient as background or border, check our [CSS Gradient Generator](#).

Hey! You found this booklet interesting? Support Converting Colors with the new Membership Option!

The pro membership hides all ads, plus gives you double the colors in the color bucket, and more awesome pro features!

[Learn more, Memberships starting at \\$2.50/m!](#)

**Follow me
on Twitter!**

@ConvertingColor