

Converting Colors

HunterLab(10.8503, 0.4576,
4.5070)

Have a look what the booklet for
HunterLab(10.8503, 0.4576, 4.5070)
contains.

HunterLab(10.9116, 0.5146, 4.4752)	3
<i>Conversions</i>	4
<i>Details</i>	6
<i>Harmonies</i>	12
<i>Previews</i>	24
<i>Color Blindness Simulation</i>	28
<i>CSS Examples</i>	31

Color

**HunterLab(10.9116, 0.5146,
4.4752)**

Conversions

Conversions Part 1

Format	Color
Hex	241B0E
RGB	36, 27, 14
RGB Percent	14%, 11%, 5%
CMY	0.8588, 0.8941, 0.9451
CMYK	0.00, 0.25, 0.61, 0.86
HSL	35°, 44%, 10%
HSV	35°, 61%, 14%
XYZ	1.1987, 1.1906, 0.5821
YIQ	28.2090, 9.5370, -2.1350

Conversions

Conversions Part 2

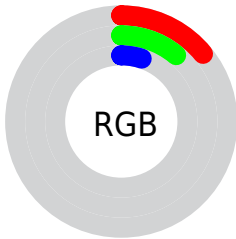
Format	Color
R_{YB}	29, 36, 14
Decimal	2366222
CIE Lab	10.49, 2.21, 9.76
CIE LCh	10, 10.005, 77.227
Yxy	1.1907, 0.4034, 0.4007
Android (android.graphics.Color)	4280556302 (0xFF241B0E)
YUV	28.2090, -7.0050, 6.8327
Hunter-Lab	10.9116, 0.5146, 4.4752

Details

The HunterLab color **10.9116, 0.5146, 4.4752** is a dark color, and the websafe version is hex **000000**. A complement of this color would be **9.1296, -0.2196, -5.2175**, and the grayscale version is **10.8593, -0.5794, 0.5900**.

A 20% lighter version of the original color is **25.3477, 0.1616, 6.5677**, and 0.0000, NaN, NaN is the 20% darker color. If you saturate the color by 10%, you get **10.5638, 0.8367, 4.8475**, and if you desaturate by 10%, it is **11.2720, 0.2278, 4.0291**.

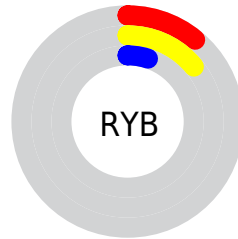
Distribution



Red (14%)

Green (11%)

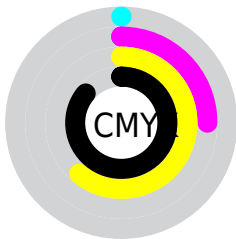
Blue (5%)



Red (11%)

Yellow (14%)

Blue (5%)

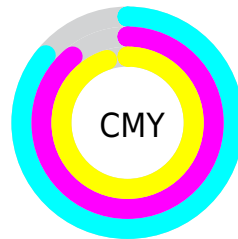


Cyan (0%)

Magenta (25%)

Yellow (61%)

Black (86%)



Cyan (86%)

Magenta (89%)

Yellow (95%)

Brightness & Saturation Gradients

These gradients show how the HunterLab color 10.9116, 0.5146, 4.4752 changes by changing the brightness by 10 percent. The first figure shows a shift by +10% for each color and the second figure -10%.

Similar to the brightness gradients but the following saturation gradients show a change of the HunterLab color 10.9116, 0.5146, 4.4752 by changing the saturation by 10% instead.

■ 10.9116, 0.5146,
4.4752

■ 10.9116, 0.5146,
4.4752

■ 100.6323, -3.1085,
14.4935

■ 2.3255, 4.0206,
1.6278

■ 25.3706, 0.0862,
6.6638

0.0000, NaN, NaN

0.0000, NaN, NaN

■ 33.9823, -0.2294,
7.8047

0.0000, NaN, NaN

■ 43.3943, -0.5998,
8.9238

0.0000, NaN, NaN

0.0000, NaN, NaN

■ 53.5435, -1.0191,
10.0332

0.0000, NaN, NaN

■ 64.3799, -1.4828,
11.1407

0.0000, NaN, NaN

■ 75.8623, -1.9873,

0.0000, NaN, NaN

12.2511

■ 87.9563, -2.5300,
13.3679

■ 10.9116, 0.5146,
4.4752

■ 10.9116, 0.5146,
4.4752

■ 10.5638, 0.8367,
4.8475

■ 11.2720, 0.2278,
4.0291

■ 10.2252, 1.1791,
5.1890

■ 11.6438, -0.0232,
3.5121

■ 9.8917, 1.5158,
5.5709

■ 12.0265, -0.2398,
2.9279

■ 9.5997, 1.8095,
5.9469

■ 12.4198, -0.4234,
2.2804

■ 12.8231, -0.5753,
1.5731

■ 13.2358, -0.6970,
0.8097

■ 13.6577, -0.7899,
-0.0064

■ 14.0881, -0.8556,
-0.8718

■ 14.5267, -0.8955,
-1.7836

Harmonies

Analogous

The Analogous color harmony consists of three colors that are next to each other on the color wheel.



10.9119, 2.9228, 3.5586



10.9116, 0.5146, 4.4752



10.9119, -1.9871, 4.3989

Triad

The Triadic color harmony groups three colors that are evenly spaced from another and form a triangle on the color wheel.



10.9119, 0.5142, 4.4753



10.9119, -4.8530, -0.8680



10.9119, 3.2243, -3.0409

Complementary

The Complementary color scheme is a pair of colors which are on the opposite of each other on the color wheel.



10.9116, 0.5146, 4.4752



9.1296, -0.2196, -5.2175

Split Complementary

Split-complementary colors differ from the complementary color scheme. The scheme consists of three colors, the original color and two neighbors of the complement color.



10.9119, 0.8962, -4.8177



10.9116, 0.5146, 4.4752



10.9119, -3.6950, -3.3802

Square

The Square scheme is like the rectangle color scheme, but the four colors are evenly spaced on the color wheel.



10.9119, 0.5142, 4.4753



10.9119, -4.9351, 1.5687



10.9119, -1.6381, -4.9544



10.9119, 4.5807, -0.4800

Rectangle

The Rectangle color scheme consists of four colors that form a rectangle on the color wheel.



10.9116, 0.5146, 4.4752



10.9119, -3.3737, 3.7950



10.9119, -1.6381, -4.9544



10.9119, 2.5203, -3.7727

Sweetspot

The Sweet Spot groups the original color and five complimentary colors.



10.9119, 0.5142, 4.4753



15.5217, -0.5657, 2.6664



8.6700, 6.2584, -0.1516



8.7007, -0.3190, 1.4850



55.4075, -2.9564, 3.0104



9.2414, -0.4931, 0.5021

Same Dimension

The Same Dimension uses a secret algorithm to generate beautiful new colors.



10.9119, 0.5142, 4.4753



12.8435, 1.3280, 6.2729



12.7920, -3.1948, 5.9008



7.5458, -0.3605, 0.7715



19.7689, 6.1363, 12.2889



52.7992, 20.7769, 32.8984

Inverse Universe

The Inverse Universe completely reimagines the original color for something new.



9.1296, -0.2196, -5.2175



10.1028, 0.3406, -8.8773



7.4173, 3.5367, -8.7091



7.4060, -0.4264, 0.0260



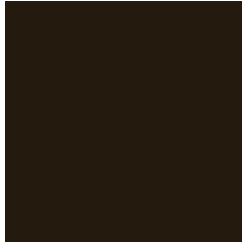
13.0840, 5.2368, -27.6586



33.4503, 20.4998, -86.0632

Previews

White Background



This preview shows how the HunterLab color 10.9116, 0.5146, 4.4752 looks on a white background.

Color Contrast Check

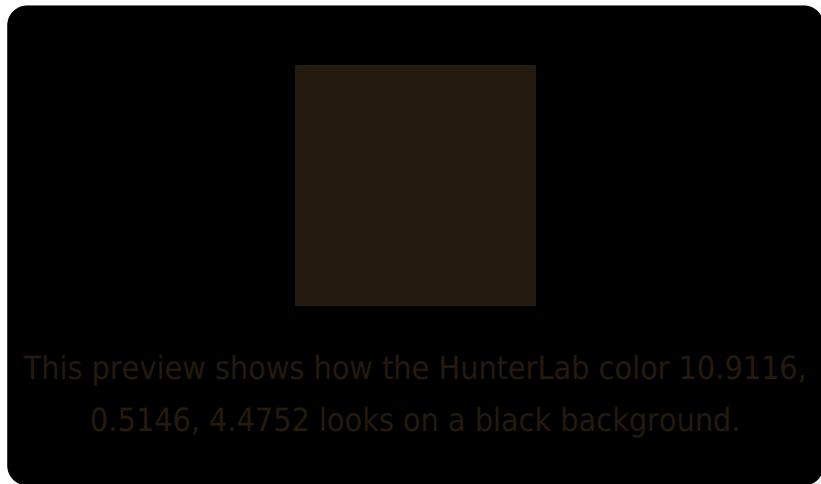
Large Text (above 18pt) WCAG AA ✓ Pass

Any Text WCAG AA ✓ Pass

Large Text (above 18pt) WCAG AAA ✓ Pass

Any Text WCAG AAA ✓ Pass

Black Background



Color Contrast Check

Large Text (above 18pt) WCAG AA × Fail

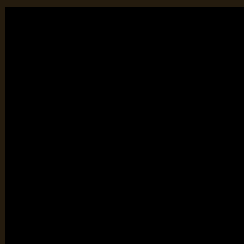
Any Text WCAG AA × Fail

Large Text (above 18pt) WCAG AAA × Fail

Any Text WCAG AAA × Fail

If you want to check with other color combinations, try the [Color Contrast Checker](#).

HunterLab 10.9116, 0.5146, 4.4752 Background



This preview shows how black text looks on a background with the HunterLab color 10.9116, 0.5146, 4.4752.

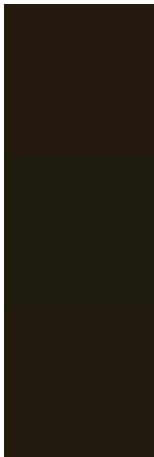


This preview shows how white text looks on a background with the HunterLab color 10.9116, 0.5146,

Color Blindness Simulation

Color vision deficiency is a very complex topic, and I could not describe the different causes any better than Wikipedia does, so if you want to learn more, you should check out their [article about color blindness](#).

Dichromacy



Original Color

10.9116, 0.5146, 4.4752

Protanopia

11.0467, -1.2138, 4.3600

Deuteranopia

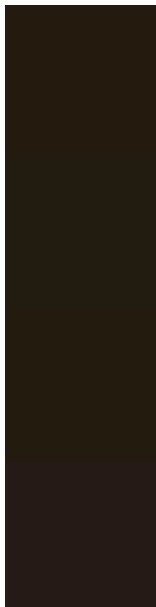
10.8300, 0.2379, 4.4031



Tritanopia

10.8061, 2.7024, 1.0167

Trichromacy



Original Color

10.9116, 0.5146, 4.4752

Protanomaly

10.9011, -0.5953, 4.2487

Deuteranomaly

10.8300, 0.2379, 4.4031

Tritanomaly

10.9089, 1.8075, 2.6281

Monochromacy



Original Color

10.9116, 0.5146, 4.4752

Achromatopsia

10.7760, -0.5750, 0.5855

Achromatomaly

10.8797, -0.4181, 2.2792

CSS Examples

Text

The CSS property to change the color of the text to HunterLab 10.9116, 0.5146, 4.4752 is called "color". The color property can be set on classes, ids or directly on the HTML element.

This example shows how text in the color `rgb(36, 27, 14)` looks like.

```
.text, #text, p{  
    color:rgb(36, 27, 14)  
}
```

If you want to add a text shadow in that color use the text-shadow property, you can generate a text shadow directly with our [CSS Text Shadow Generator](#).

Here you see how black text with a 4 pixel rgb(36, 27, 14) colored shadow looks like.

```
.shadow{ text-shadow: 4px 4px 2px rgb(36, 27, 14) }
```

Border

The CSS property to change the border of an element to HunterLab 10.9116, 0.5146, 4.4752 is called "border".

The border property can be set on classes, ids or directly on the HTML element.

This example shows the color as border, it can be applied via the CSS property "border" or "border-color".

```
.border, #border, table{ border:4px solid rgb(36, 27, 14) }
```


If only the border color should be changed use the property `border-color`.

```
.border{ border-color:rgb(36, 27, 14) }
```

If you want to add a box shadow in that color use:

Here you see how a box with a 4 pixel `rgb(36, 27, 14)` colored shadow looks like.

```
.boxshadow{ -moz-box-shadow:4px 4px 4px  
4px rgb(36, 27, 14); -webkit-box-  
shadow:4px 4px 4px 4px rgb(36, 27, 14);  
box-shadow:4px 4px 4px 4px rgb(36, 27, 14)  
}
```

Background

The CSS property to change the background color of an element to HunterLab 10.9116, 0.5146, 4.4752 is called "background". The background property can be set on classes, ids or directly on the HTML element.

```
.background, #background, body{  
background: rgb(36, 27, 14) }
```

If only the background color should be changed can be used:

```
.background{ background-color: rgb(36, 27,  
14) }
```

This example shows the color as background, it is applied via the CSS property "background".

To optimize and compress your CSS code, you can use our [online CSS compressor and optimizer](#) based on csstidy. If you want to create a linear or radial gradient as background or border, check our [CSS Gradient Generator](#).

Hey! You found this booklet
interesting? Support Converting
Colors with the new Membership
Option!

The pro membership hides all ads, plus gives you
double the colors in the color bucket, and more
awesome pro features!

[Learn more, Memberships starting at \\$2.50/m!](#)

**Follow me
on Twitter!**

@ConvertingColor