

# Converting Colors

HunterLab(11.0800, 1.6276,  
4.9946)

Have a look what the booklet for  
HunterLab(11.0800, 1.6276, 4.9946)  
contains.

<b>HunterLab(11.0293, 1.9135, 4.9599)</b> .....	3
<i><b>Conversions</b></i> .....	4
<i><b>Details</b></i> .....	6
<i><b>Harmonies</b></i> .....	12
<i><b>Previews</b></i> .....	24
<i><b>Color Blindness Simulation</b></i> .....	28
<i><b>CSS Examples</b></i> .....	31

# Color

**HunterLab(11.0293, 1.9135,  
4.9599)**

# Conversions

## Conversions Part 1

Format	Color
Hex	281A0C
RGB	40, 26, 12
RGB Percent	16%, 10%, 5%
CMY	0.8431, 0.8980, 0.9529
CMYK	0.00, 0.35, 0.70, 0.84
HSL	30°, 54%, 10%
HSV	30°, 70%, 16%
XYZ	1.3108, 1.2165, 0.5135
YIQ	28.5900, 12.8380, -1.3860

# Conversions

## Conversions Part 2

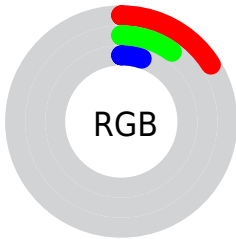
<b>Format</b>	<b>Color</b>
<b>RYB</b>	40, 40, 12
Decimal	2628108
CIELab	10.68, 4.91, 11.07
CIElCh	11, 12.107, 66.062
Yxy	1.2165, 0.4311, 0.4000
Android (android.graphics.Color)	4280818188 (0xFF281A0C)
YUV	28.5900, -8.1789, 10.0066
Hunter-Lab	11.0293, 1.9135, 4.9599

# Details

The HunterLab color **11.0293, 1.9135, 4.9599** is a dark color, and the websafe version is hex **333333**. A complement of this color would be **9.8495, -0.8534, -6.0301**, and the grayscale version is **10.9797, -0.5858, 0.5965**.

A 20% lighter version of the original color is **25.5157, 1.9071, 7.3573**, and 0.0000, NaN, NaN is the 20% darker color. If you saturate the color by 10%, you get **10.5924, 2.4534, 5.2840**, and if you desaturate by 10%, it is **11.4852, 1.4090, 4.5711**.

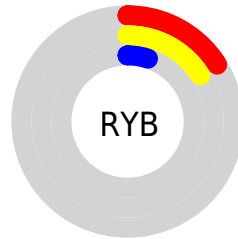
# Distribution



Red (16%)

Green (10%)

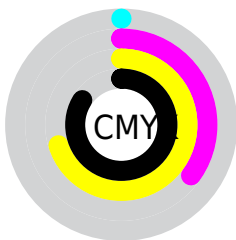
Blue (5%)



Red (16%)

Yellow (16%)

Blue (5%)

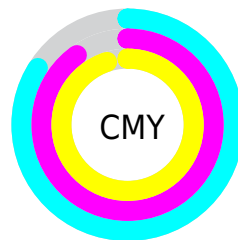


Cyan (0%)

Magenta (35%)

Yellow (70%)

Black (84%)



Cyan (84%)

Magenta (90%)

Yellow (95%)

# Brightness & Saturation Gradients

These gradients show how the HunterLab color 11.0293, 1.9135, 4.9599 changes by changing the brightness by 10 percent. The first figure shows a shift by +10% for each color and the second figure -10%.

Similar to the brightness gradients but the following saturation gradients show a change of the HunterLab color 11.0293, 1.9135, 4.9599 by changing the saturation by 10% instead.



■ 11.0293, 1.9135,  
4.9599

■ 11.0293, 1.9135,  
4.9599

■ 100.8788, -0.3236,  
15.6576

■ 2.7410, 7.6632,  
1.9187

■ 25.5264, 1.8869,  
7.2951

0.0000, NaN, NaN

0.0000, NaN, NaN

■ 34.1540, 1.7420,  
8.5332

0.0000, NaN, NaN

■ 43.5806, 1.5288,  
9.7395

0.0000, NaN, NaN

■ 53.7433, 1.2559,  
10.9286

0.0000, NaN, NaN

0.0000, NaN, NaN


■ 64.5924, 0.9298,  
12.1098


0.0000, NaN, NaN

■ 76.0867, 0.5554,

0.0000, NaN, NaN

13.2891


 88.1920, 0.1365,  
14.4707


 11.0293, 1.9135,  
4.9599


 11.0293, 1.9135,  
4.9599


 10.5924, 2.4534,  
5.2840


 11.4852, 1.4090,  
4.5711


 10.1674, 2.9922,  
5.6476


 11.9592, 0.9472,  
4.1046

 9.7545, 3.5213,  
6.0722

 12.4505, 0.5267,  
3.5659

 9.7544, 3.5213,  
6.0723

 12.9579, 0.1459,  
2.9602

 13.4803, -0.1970,  
2.2927

■ 14.0170, -0.5040,  
1.5683

■ 14.5668, -0.7773,  
0.7914

■ 15.1291, -1.0188,  
-0.0338

■ 15.7031, -1.2307,  
-0.9035

# Harmonies

## Analogous

The Analogous color harmony consists of three colors that are next to each other on the color wheel.



11.0296, 4.6070, 3.4798



11.0293, 1.9135, 4.9599



11.0296, -1.2064, 5.3260

# Triad

The Triadic color harmony groups three colors that are evenly spaced from another and form a triangle on the color wheel.



11.0296, 1.9130, 4.9600



11.0296, -5.8735, -0.0100



11.0296, 3.1103, -4.9804

# Complementary

The Complementary color scheme is a pair of colors which are on the opposite of each other on the color wheel.



11.0293, 1.9135, 4.9599



9.8495, -0.8534, -6.0301

# Split Complementary

Split-complementary colors differ from the complementary color scheme. The scheme consists of three colors, the original color and two neighbors of the complement color.



11.0296, 0.0420, -6.5818



11.0293, 1.9135, 4.9599



11.0296, -4.9719, -3.2487

# Square

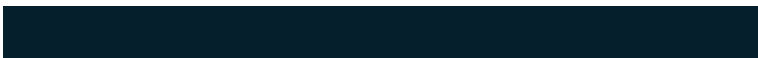
The Square scheme is like the rectangle color scheme, but the four colors are evenly spaced on the color wheel.



11.0296, 1.9130, 4.9600



11.0296, -5.4880, 2.6475



11.0296, -2.8863, -5.8739



11.0296, 5.3495, -1.9333

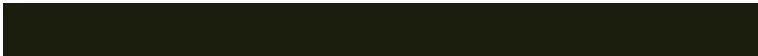


# Rectangle

The Rectangle color scheme consists of four colors that form a rectangle on the color wheel.



11.0293, 1.9135, 4.9599



11.0296, -3.0676, 4.8887



11.0296, -2.8863, -5.8739



11.0296, 2.1296, -5.7388

# Sweetspot

The Sweet Spot groups the original color and five complimentary colors.



11.0296, 1.9130, 4.9600



16.6895, -0.1538, 3.0574



8.8806, 8.4383, -0.9048



9.1999, -0.0951, 1.6606



56.4399, -3.0115, 3.0665



10.0114, -0.5342, 0.5439



# Same Dimension

The Same Dimension uses a secret algorithm to generate beautiful new colors.



11.0296, 1.9130, 4.9600



12.7640, 3.7261, 6.8419



14.1253, -3.2337, 7.1873



8.2251, -0.3268, 0.8253



18.8501, 9.6283, 11.7839



49.2127, 30.6254, 30.8608



# Inverse Universe

The Inverse Universe completely reimagines the original color for something new.



9.8495, -0.8534, -6.0301



10.9499, -0.3611, -10.2175



7.0308, 4.6074, -12.5160



8.1409, -0.5328, 0.0499



15.1771, 2.0974, -23.4977

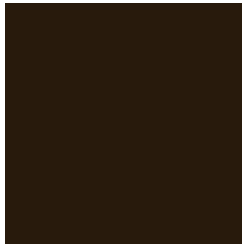


38.7377, 10.4269, -70.9275



# Previews

## White Background



This preview shows how the HunterLab color 11.0293, 1.9135, 4.9599 looks on a white background.

## Color Contrast Check

Large Text (above 18pt) WCAG AA ✓ Pass

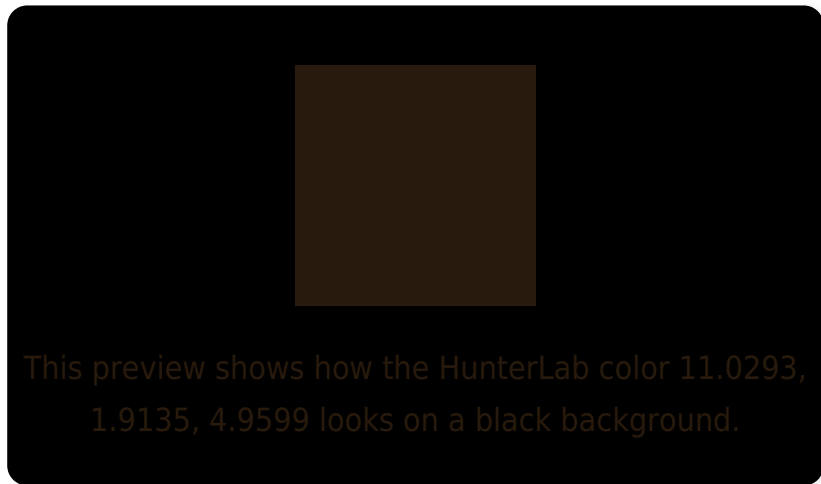
Any Text WCAG AA ✓ Pass

Large Text (above 18pt) WCAG AAA ✓ Pass

Any Text WCAG AAA ✓ Pass



# Black Background



## Color Contrast Check

Large Text (above 18pt) WCAG AA × Fail

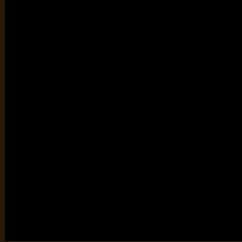
Any Text WCAG AA × Fail

Large Text (above 18pt) WCAG AAA × Fail

Any Text WCAG AAA × Fail

If you want to check with other color combinations, try the [Color Contrast Checker](#).

# HunterLab 11.0293, 1.9135, 4.9599 Background



This preview shows how black text looks on a background with the HunterLab color 11.0293, 1.9135, 4.9599.



This preview shows how white text looks on a background with the HunterLab color 11.0293, 1.9135,

4.9599.

# Color Blindness Simulation

Color vision deficiency is a very complex topic, and I could not describe the different causes any better than Wikipedia does, so if you want to learn more, you should check out their [article about color blindness](#).

## Dichromacy



### Original Color

11.0293, 1.9135, 4.9599

### Protanopia

11.0221, -1.3501, 4.7199

### Deuteranopia

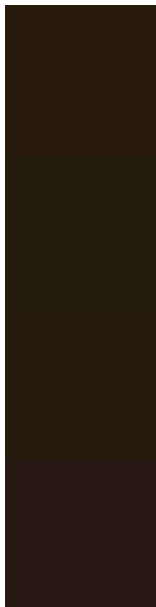
11.1001, 0.0194, 4.9823



**Tritanopia**

10.9511, 4.1041, 1.5288

# Trichromacy



## Original Color

11.0293, 1.9135, 4.9599

## Protanomaly

11.0313, -0.1941, 4.7475

## Deuteranomaly

10.9714, 0.6690, 4.8926

## Tritanomaly

11.0491, 3.2400, 3.0581

# Monochromacy



## Original Color

11.0293, 1.9135, 4.9599

## Achromatopsia

11.0844, -0.5914, 0.6022

## Achromatomaly

11.0259, 0.0849, 2.4367

# CSS Examples

## Text

The CSS property to change the color of the text to HunterLab 11.0293, 1.9135, 4.9599 is called "color". The color property can be set on classes, ids or directly on the HTML element.

This example shows how text in the color `rgb(40, 26, 12)` looks like.

```
.text, #text, p{  
    color:rgb(40, 26, 12)  
}
```

If you want to add a text shadow in that color use the text-shadow property, you can generate a text shadow directly with our [CSS Text Shadow Generator](#).

Here you see how black text with a 4 pixel rgb(40, 26, 12) colored shadow looks like.

```
.shadow{ text-shadow: 4px 4px 2px rgb(40, 26, 12) }
```

## Border

The CSS property to change the border of an element to HunterLab 11.0293, 1.9135, 4.9599 is called "border". The border property can be set on classes, ids or directly on the HTML element.

This example shows the color as border, it can be applied via the CSS property "border" or "border-color".

```
.border, #border, table{ border:4px solid rgb(40, 26, 12) }
```



If only the border color should be changed use the property `border-color`.

```
.border{ border-color:rgb(40, 26, 12) }
```

If you want to add a box shadow in that color use:

Here you see how a box with a 4 pixel `rgb(40, 26, 12)` colored shadow looks like.

```
.boxshadow{ -moz-box-shadow:4px 4px 4px  
4px rgb(40, 26, 12); -webkit-box-  
shadow:4px 4px 4px 4px rgb(40, 26, 12);  
box-shadow:4px 4px 4px 4px rgb(40, 26, 12)  
}
```

# Background

The CSS property to change the background color of an element to HunterLab 11.0293, 1.9135, 4.9599 is called "background". The background property can be set on classes, ids or directly on the HTML element.

```
.background, #background, body{  
background: rgb(40, 26, 12) }
```

If only the background color should be changed can be used:

```
.background{ background-color: rgb(40, 26,  
12) }
```

This example shows the color as background, it is applied via the CSS property "background".

To optimize and compress your CSS code, you can use our [online CSS compressor and optimizer](#) based on csstidy. If you want to create a linear or radial gradient as background or border, check our [CSS Gradient Generator](#).

# Hey! You found this booklet interesting? Support Converting Colors with the new Membership Option!

The pro membership hides all ads, plus gives you double the colors in the color bucket, and more awesome pro features!

**[Learn more, Memberships starting at \\$2.50/m!](#)**

**Follow me  
on Twitter!**

@ConvertingColor