

Converting Colors

HunterLab(11.1194, 1.4445,
5.0932)

Have a look what the booklet for
HunterLab(11.1194, 1.4445, 5.0932)
contains.

HunterLab(11.1434, 1.2430, 5.0376)	3
<i>Conversions</i>	4
<i>Details</i>	6
<i>Harmonies</i>	12
<i>Previews</i>	24
<i>Color Blindness Simulation</i>	28
<i>CSS Examples</i>	31

Color

**HunterLab(11.1434, 1.2430,
5.0376)**

Conversions

Conversions Part 1

Format	Color
Hex	271B0C
RGB	39, 27, 12
RGB Percent	15%, 11%, 5%
CMY	0.8471, 0.8941, 0.9529
CMYK	0.00, 0.31, 0.69, 0.85
HSL	33°, 53%, 10%
HSV	33°, 69%, 15%
XYZ	1.2950, 1.2418, 0.5193
YIQ	28.8780, 11.9670, -2.1210

Conversions

Conversions Part 2

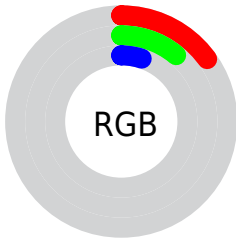
Format	Color
RYB	34, 39, 12
Decimal	2562828
CIELab	10.86, 3.64, 11.30
CIELCh	11, 11.871, 72.164
Yxy	1.2418, 0.4237, 0.4063
Android (android.graphics.Color)	4280752908 (0xFF271B0C)
YUV	28.8780, -8.3209, 8.8770
Hunter-Lab	11.1434, 1.2430, 5.0376

Details

The HunterLab color **11.1434, 1.2430, 5.0376** is a dark color, and the websafe version is hex **333333**. A complement of this color would be **9.3695, -0.3090, -6.3782**, and the grayscale version is **11.0693, -0.5906, 0.6014**.

A 20% lighter version of the original color is **25.6660, 1.1668, 7.4862**, and 0.0000, NaN, NaN is the 20% darker color. If you saturate the color by 10%, you get **10.7512, 1.6813, 5.3714**, and if you desaturate by 10%, it is **11.5509, 0.8393, 4.6360**.

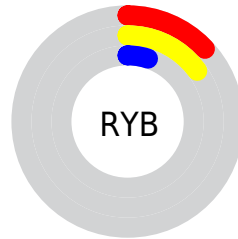
Distribution



Red (15%)

Green (11%)

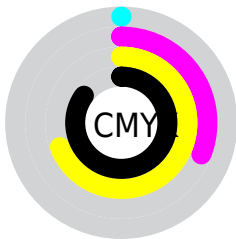
Blue (5%)



Red (13%)

Yellow (15%)

Blue (5%)

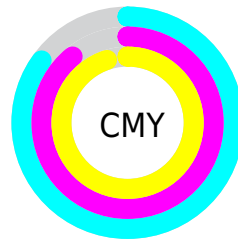


Cyan (0%)

Magenta (31%)

Yellow (69%)

Black (85%)



Cyan (85%)

Magenta (89%)

Yellow (95%)

Brightness & Saturation Gradients

These gradients show how the HunterLab color 11.1434, 1.2430, 5.0376 changes by changing the brightness by 10 percent. The first figure shows a shift by +10% for each color and the second figure -10%.

Similar to the brightness gradients but the following saturation gradients show a change of the HunterLab color 11.1434, 1.2430, 5.0376 by changing the saturation by 10% instead.

■ 11.1434, 1.2430,
5.0376

■ 11.1434, 1.2430,
5.0376

■ 101.1171, -1.6588,
15.8831

■ 3.0897, 4.9630,
2.1628

■ 25.6773, 1.0237,
7.4256

0.0000, NaN, NaN

0.0000, NaN, NaN

■ 34.3202, 0.7970,
8.6805

0.0000, NaN, NaN

■ 43.7608, 0.5084,
9.9022

0.0000, NaN, NaN

■ 53.9366, 0.1653,
11.1056

0.0000, NaN, NaN

0.0000, NaN, NaN

■ 64.7978, -0.2268,
12.3000

0.0000, NaN, NaN

■ 76.3036, -0.6636,

0.0000, NaN, NaN

13.4917

■ 88.4199, -1.1419,
14.6850

■ 11.1434, 1.2430,
5.0376

■ 11.1434, 1.2430,
5.0376

■ 10.7512, 1.6813,
5.3714

■ 11.5509, 0.8393,
4.6360

■ 10.3673, 2.1198,
5.7355

■ 11.9730, 0.4767,
4.1547

■ 9.9914, 2.5510,
6.1501

■ 12.4094, 0.1537,
3.5981

■ 9.9627, 2.5839,
6.1842

■ 12.8591, -0.1311,
2.9708

■ 13.3215, -0.3793,
2.2773

■ 13.7959, -0.5926,
1.5221

■ 14.2816, -0.7728,
0.7093

■ 14.7781, -0.9217,
-0.1571

■ 15.2846, -1.0412,
-1.0733

Harmonies

Analogous

The Analogous color harmony consists of three colors that are next to each other on the color wheel.



11.1437, 4.0511, 3.7983



11.1434, 1.2430, 5.0376



11.1437, -1.7942, 5.1508

Triad

The Triadic color harmony groups three colors that are evenly spaced from another and form a triangle on the color wheel.



11.1437, 1.2425, 5.0377



11.1437, -5.7291, -0.6231



11.1437, 3.5831, -4.3221

Complementary

The Complementary color scheme is a pair of colors which are on the opposite of each other on the color wheel.



11.1434, 1.2430, 5.0376



9.3695, -0.3090, -6.3782

Split Complementary

Split-complementary colors differ from the complementary color scheme. The scheme consists of three colors, the original color and two neighbors of the complement color.



11.1437, 0.6568, -6.2692



11.1434, 1.2430, 5.0376



11.1437, -4.5863, -3.7822

Square

The Square scheme is like the rectangle color scheme, but the four colors are evenly spaced on the color wheel.



11.1437, 1.2425, 5.0377



11.1437, -5.6082, 2.1714



11.1437, -2.3210, -6.0488



11.1437, 5.4984, -1.2243

Rectangle

The Rectangle color scheme consists of four colors that form a rectangle on the color wheel.



11.1434, 1.2430, 5.0376



11.1437, -3.5250, 4.5723



11.1437, -2.3210, -6.0488



11.1437, 2.6725, -5.1659

Sweetspot

The Sweet Spot groups the original color and five complimentary colors.



11.1437, 1.2425, 5.0377



16.8280, -0.3891, 3.1981



8.7228, 7.9536, -0.4155



9.2746, -0.2220, 1.7367



56.4399, -3.0115, 3.0665



10.0114, -0.5342, 0.5439

Same Dimension

The Same Dimension uses a secret algorithm to generate beautiful new colors.



11.1437, 1.2425, 5.0377



13.2891, 2.7261, 7.1257



13.7224, -3.4828, 6.8918



8.2488, -0.3664, 0.8514



19.7614, 7.6573, 12.3109



51.7747, 24.8249, 32.3379

Inverse Universe

The Inverse Universe completely reimagines the original color for something new.



9.3695, -0.3090, -6.3782



10.4933, 0.5040, -11.2217



7.0547, 4.5783, -11.7044



8.1170, -0.4933, 0.0213



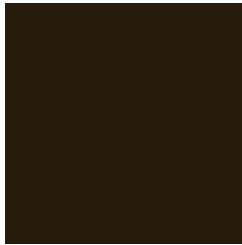
14.1081, 4.1592, -26.6123



35.7092, 16.7254, -80.7386

Previews

White Background



This preview shows how the HunterLab color 11.1434, 1.2430, 5.0376 looks on a white background.

Color Contrast Check

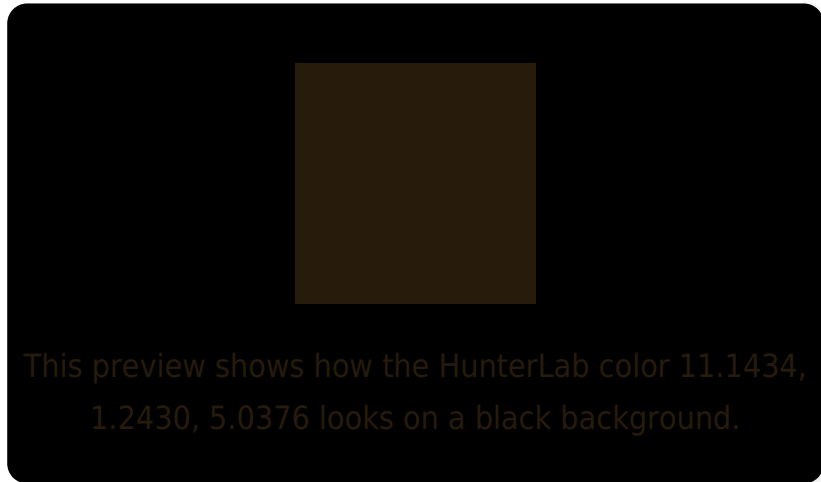
Large Text (above 18pt) WCAG AA ✓ Pass

Any Text WCAG AA ✓ Pass

Large Text (above 18pt) WCAG AAA ✓ Pass

Any Text WCAG AAA ✓ Pass

Black Background



Color Contrast Check

Large Text (above 18pt) WCAG AA × Fail

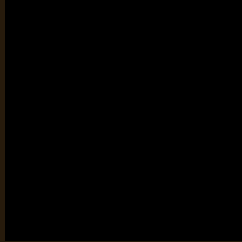
Any Text WCAG AA × Fail

Large Text (above 18pt) WCAG AAA × Fail

Any Text WCAG AAA × Fail

If you want to check with other color combinations, try the [Color Contrast Checker](#).

HunterLab 11.1434, 1.2430, 5.0376 Background



This preview shows how black text looks on a background with the HunterLab color 11.1434, 1.2430, 5.0376.

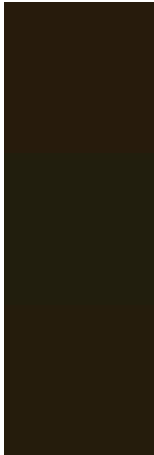


This preview shows how white text looks on a background with the HunterLab color 11.1434, 1.2430,

Color Blindness Simulation

Color vision deficiency is a very complex topic, and I could not describe the different causes any better than Wikipedia does, so if you want to learn more, you should check out their [article about color blindness](#).

Dichromacy



Original Color

11.1434, 1.2430, 5.0376

Protanopia

11.3179, -1.4463, 4.9540

Deuteranopia

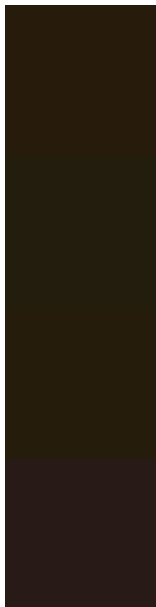
11.1820, 0.2987, 5.0512



Tritanopia

11.0703, 3.5321, 1.3298

Trichromacy



Original Color

11.1434, 1.2430, 5.0376

Protanomaly

11.2477, -0.5580, 4.9139

Deuteranomaly

11.2655, 0.5816, 5.1214

Tritanomaly

11.1706, 2.6513, 2.9009

Monochromacy



Original Color

11.1434, 1.2430, 5.0376

Achromatopsia

11.0844, -0.5914, 0.6022

Achromatomaly

11.0259, 0.0849, 2.4367

CSS Examples

Text

The CSS property to change the color of the text to HunterLab 11.1434, 1.2430, 5.0376 is called "color". The color property can be set on classes, ids or directly on the HTML element.

This example shows how text in the color `rgb(39, 27, 12)` looks like.

```
.text, #text, p{  
  color:rgb(39, 27, 12)  
}
```

If you want to add a text shadow in that color use the text-shadow property, you can generate a text shadow directly with our [CSS Text Shadow Generator](#).

Here you see how black text with a 4 pixel rgb(39, 27, 12) colored shadow looks like.

```
.shadow{ text-shadow: 4px 4px 2px rgb(39, 27, 12) }
```

Border

The CSS property to change the border of an element to HunterLab 11.1434, 1.2430, 5.0376 is called "border". The border property can be set on classes, ids or directly on the HTML element.

This example shows the color as border, it can be applied via the CSS property "border" or "border-color".

```
.border, #border, table{ border:4px solid rgb(39, 27, 12) }
```


If only the border color should be changed use the property `border-color`.

```
.border{ border-color:rgb(39, 27, 12) }
```

If you want to add a box shadow in that color use:

Here you see how a box with a 4 pixel `rgb(39, 27, 12)` colored shadow looks like.

```
.boxshadow{ -moz-box-shadow:4px 4px 4px  
4px rgb(39, 27, 12); -webkit-box-  
shadow:4px 4px 4px 4px rgb(39, 27, 12);  
box-shadow:4px 4px 4px 4px rgb(39, 27, 12)  
}
```

Background

The CSS property to change the background color of an element to HunterLab 11.1434, 1.2430, 5.0376 is called "background". The background property can be set on classes, ids or directly on the HTML element.

```
.background, #background, body{  
background: rgb(39, 27, 12) }
```

If only the background color should be changed can be used:

```
.background{ background-color: rgb(39, 27,  
12) }
```

This example shows the color as background, it is applied via the CSS property "background".

To optimize and compress your CSS code, you can use our [online CSS compressor and optimizer](#) based on csstidy. If you want to create a linear or radial gradient as background or border, check our [CSS Gradient Generator](#).

Hey! You found this booklet interesting? Support Converting Colors with the new Membership Option!

The pro membership hides all ads, plus gives you double the colors in the color bucket, and more awesome pro features!

[Learn more, Memberships starting at \\$2.50/m!](#)

**Follow me
on Twitter!**

@ConvertingColor